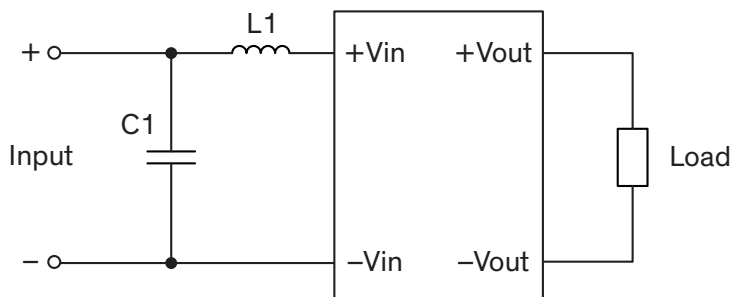


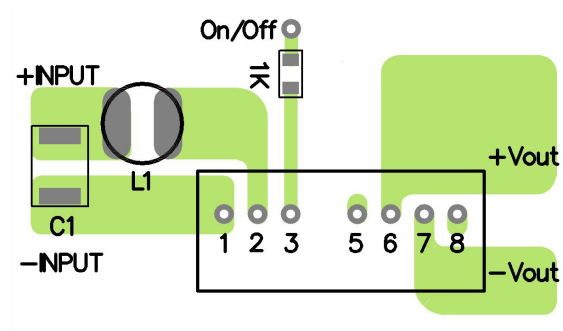
### EMI Consideration

#### Suggested filter to comply with EN 55032 Conducted and Radiated Emissions Class A limits

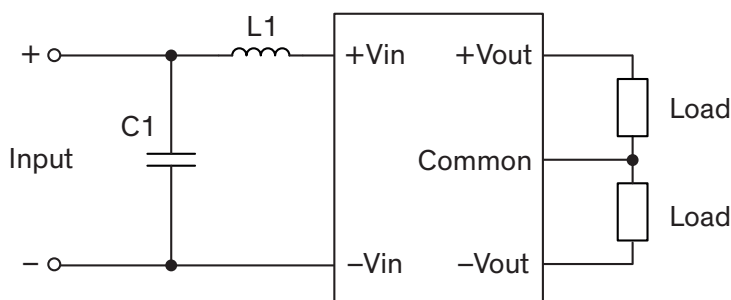
##### Single output models



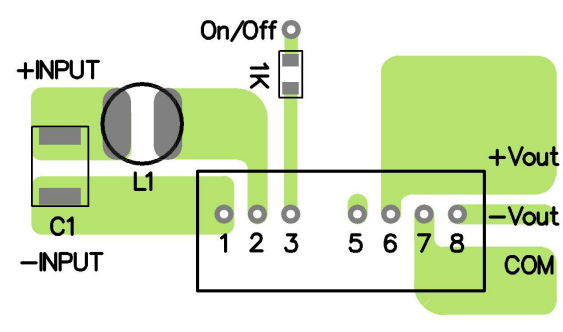
##### PCB layout suggestion



##### Dual output models



##### PCB layout suggestion



#### Suggested components to comply with EN 55032 Conducted and Radiated Emissions Class A limits

Model	C1	L1
TMR 05xx TMR 12xx	10 $\mu$ F / 25 V / 1812 MLCC	2.2 $\mu$ H / 3.8 A / TCK-059
TMR 24xx	6.8 $\mu$ F / 50 V / 1812 MLCC	3.3 $\mu$ H / 2 A / TCK-044
TMR 48xx	2.2 $\mu$ F / 100 V / 1812 MLCC	10 $\mu$ H / 1.4 A / TCK-047

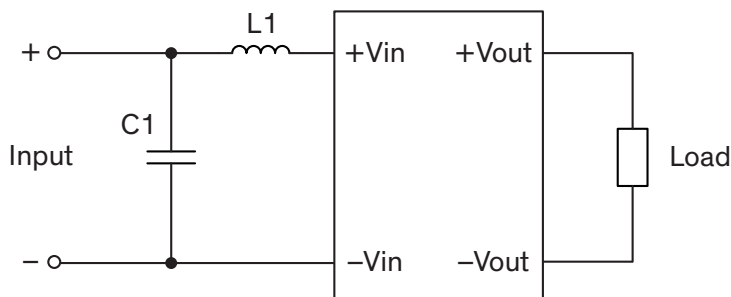
TCK-059 datasheet: [www.tracopower.com/overview/tck-059](http://www.tracopower.com/overview/tck-059)

TCK-044 datasheet: [www.tracopower.com/overview/tck-044](http://www.tracopower.com/overview/tck-044)

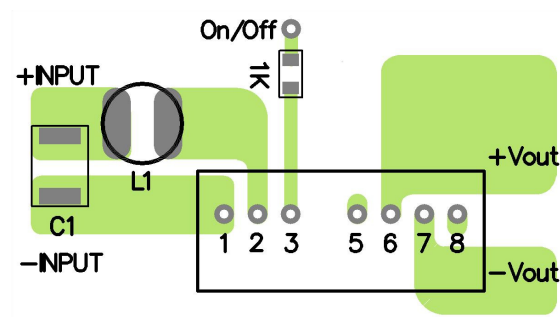
TCK-047 datasheet: [www.tracopower.com/overview/tck-047](http://www.tracopower.com/overview/tck-047)

### Suggested filter to comply with EN 55032 Conducted and Radiated Emissions Class B limits

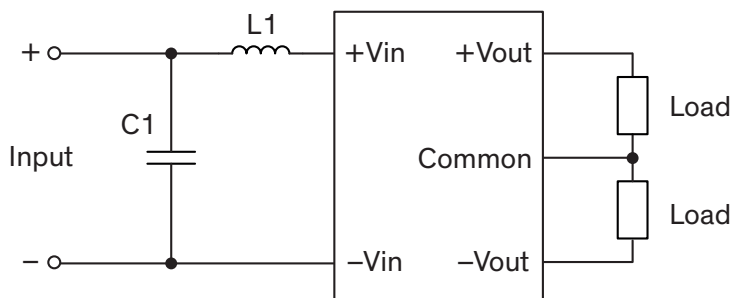
#### Single output models



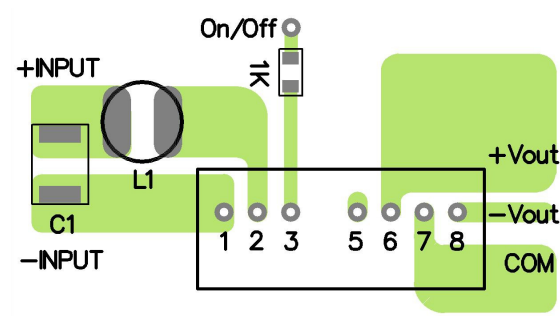
#### PCB layout suggestion



#### Dual output models



#### PCB layout suggestion



### Suggested components to comply with EN 55032 Conducted and Radiated Emissions Class B limits

Model	C1	L1
TMR 05xx TMR 12xx	22 $\mu$ F / 25 V / 1812 MLCC	3.3 $\mu$ H / 2 A / TCK-044
TMR 24xx	4.7 $\mu$ F / 50 V / 1812 MLCC	12 $\mu$ H / 1.4 A / TCK-062
TMR 48xx	2.2 $\mu$ F / 100 V / 1812 MLCC	27 $\mu$ H / 0.9 A / TCK-063

TCK-059 datasheet: [www.tracopower.com/overview/tck-059](http://www.tracopower.com/overview/tck-059)

TCK-044 datasheet: [www.tracopower.com/overview/tck-044](http://www.tracopower.com/overview/tck-044)

TCK-047 datasheet: [www.tracopower.com/overview/tck-047](http://www.tracopower.com/overview/tck-047)