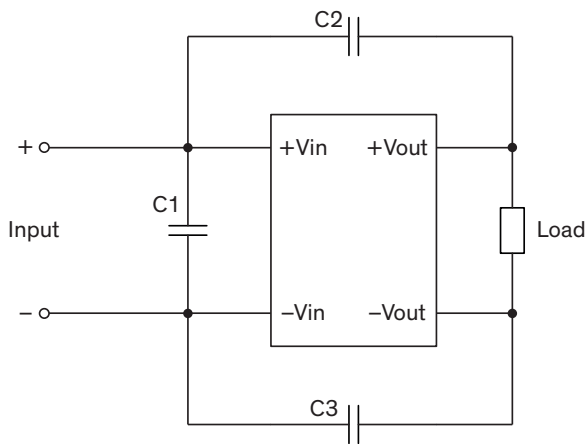


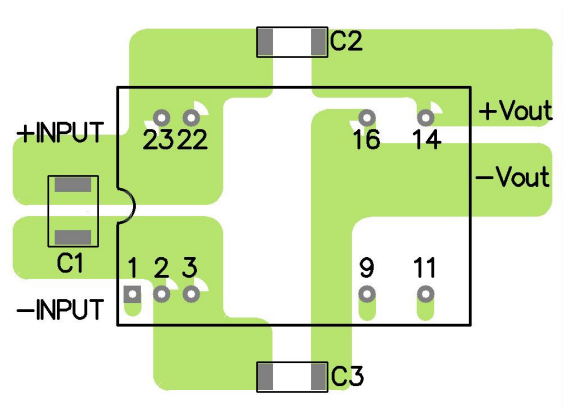
EMI Consideration

Suggested filter to comply with EN 55032 Conducted and Radiated Emissions Class A limits

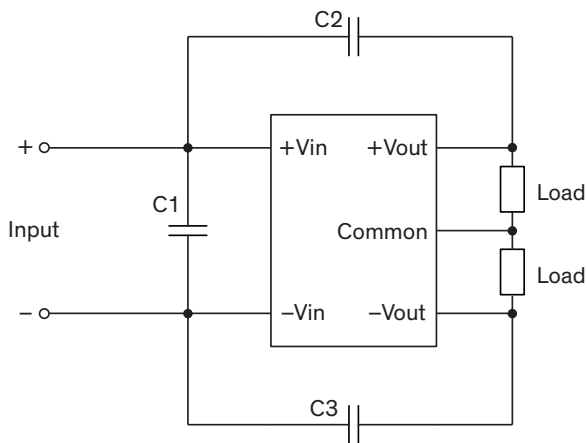
Single output models



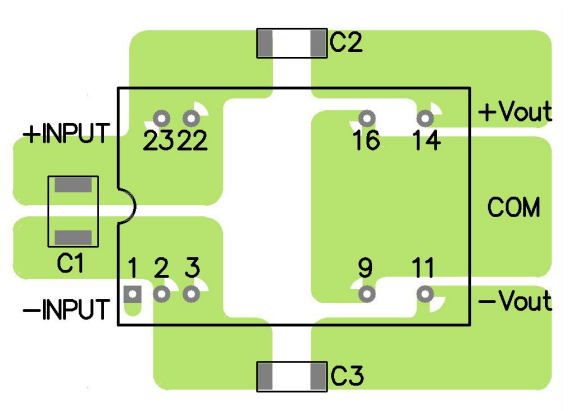
PCB layout suggestion



Dual output models



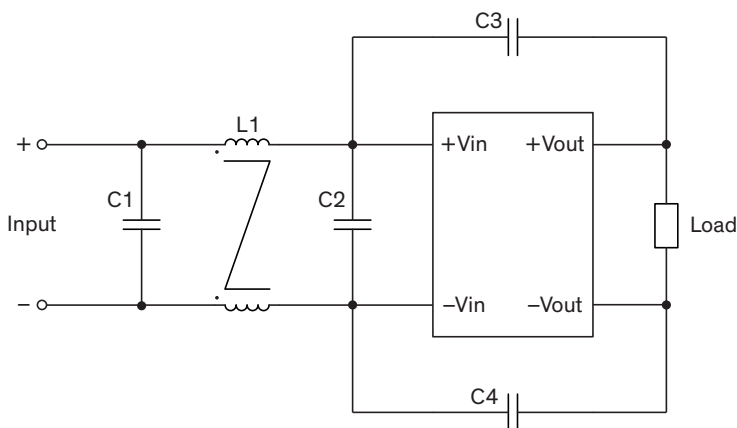
PCB layout suggestion



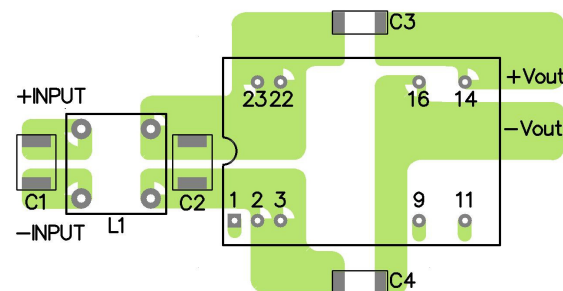
Suggested components to comply with EN 55032 Conducted and Radiated Emissions Class A limits		
Model	C1	C2, C3
THD 12-12xx	6.8 μ F / 50 V / 1210 MLCC	1'000 pF / 2 kV / 1206 MLCC
THD 12-24xx	4.7 μ F / 50 V / 1210 MLCC	
THD 12-48xx	2.2 μ F / 100 V / 1812 MLCC	

Suggested filter to comply with EN 55032 Conducted and Radiated Emissions Class B limits

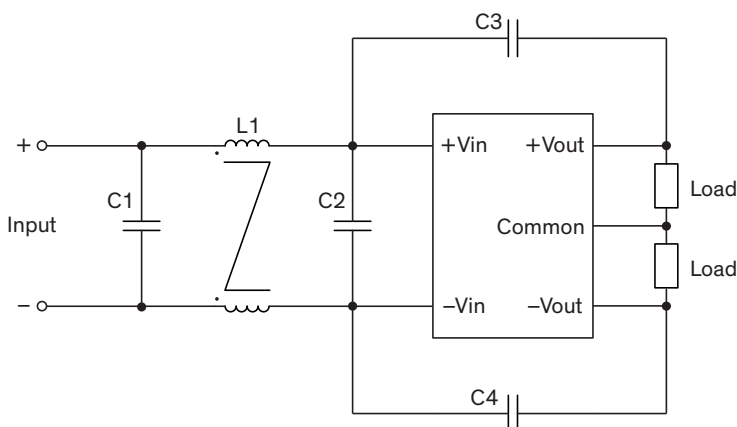
Single output models



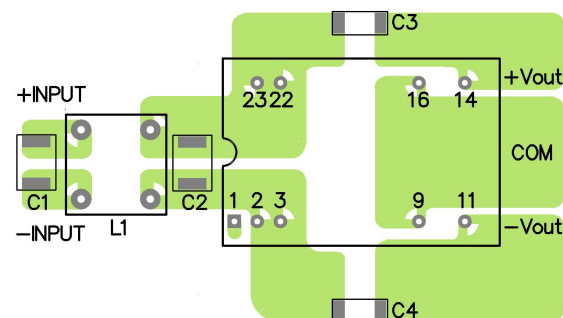
PCB layout suggestion



Dual output models



PCB layout suggestion



Suggested components to comply with EN 55032 Conducted and Radiated Emissions Class B limits

Model	C1	C2	C3, C4	L1
THD 12-12xx	3.3 μ F / 50 V 1812 MLCC	-	1'000 pF / 2 kV 1206 MLCC	325 μ H / 3.3 A TCK-050
THD 12-24xx	4.7 μ F / 50 V 1812 MLCC			145 μ H / 5.2 A TCK-051
THD 12-48xx	2.2 μ F / 100 V 1812 MLCC	2.2 μ F / 100 V 1812 MLCC		

TCK-050 datasheet: www.tracopower.com/overview/tck-050

TCK-051 datasheet: www.tracopower.com/overview/tck-051