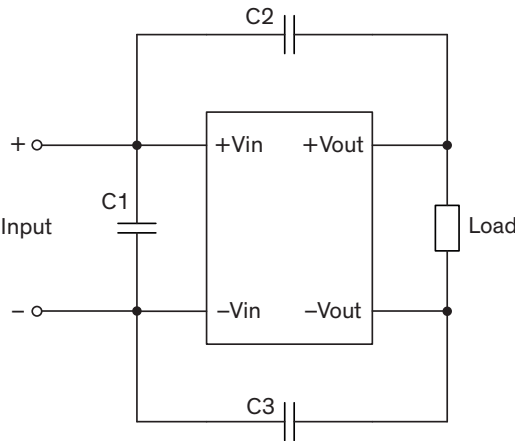


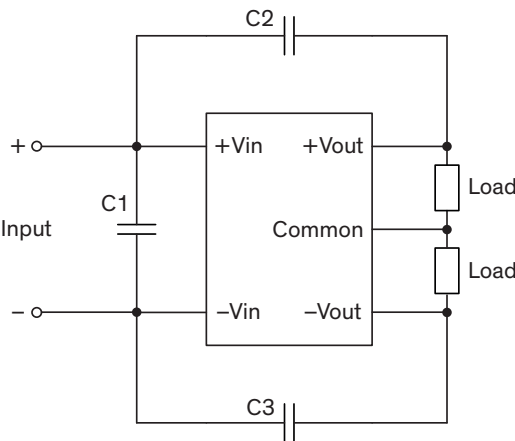
EMI Consideration

Suggested filter to comply with EN 55032 Conducted Emissions Class A limits

Single output models



Dual output models



Suggested components to comply with EN 55032 Radiated Emissions Class A limits

Model	C1	C2, C3
TEN 40-12xxN	10 μ F / 25 V / 1812 MLCC	1'000 pF / 2 kV / 1808 MLCC
TEN 40-24xxN	4.7 μ F / 50 V / 1812 MLCC	
TEN 40-48xxN	2.2 μ F / 100 V / 1812 MLCC	