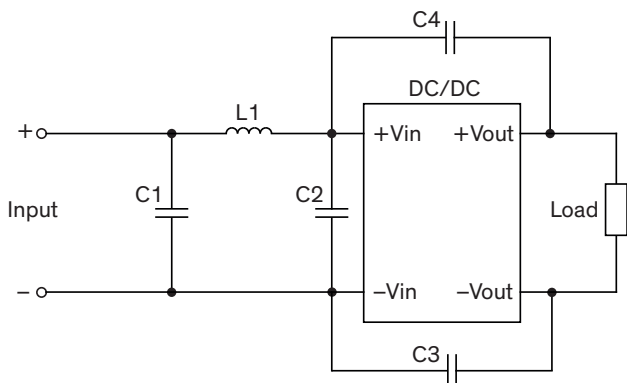


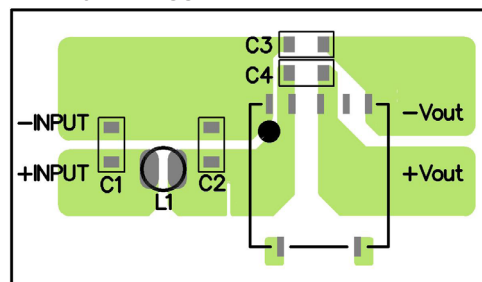
EMI Consideration

Suggested filter to comply with EN 55032 Class A resp. B limits

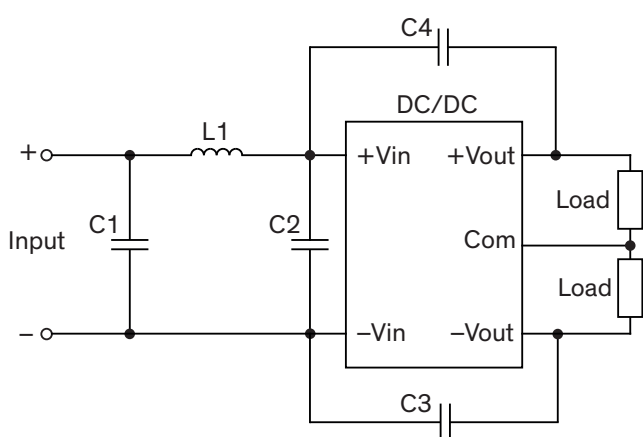
Single output models



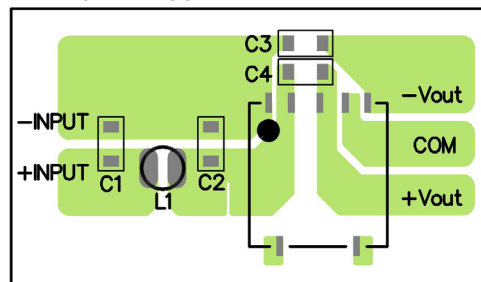
PCB layout suggestion



Dual output models



PCB layout suggestion



Suggested components

Suggested components to comply with EN 55032 Class A limits					
Model	C1	C2	C3	C4	L1
TRS 2-09xx	22 μ F / 16 V 1206 MLCC	N/A	150 pF / 2 kV 1206 MLCC	N/A	TCK-151 4.7 μ H, 1.4 A
TRS 2-12xx	10 μ F / 25 V 1206 MLCC	N/A	150 pF / 2 kV 1206 MLCC	N/A	TCK-147 15 μ H, 0.6 A
TRS 2-24xx	4.7 μ F / 50 V 1206 MLCC	N/A	150 pF / 2 kV 1206 MLCC	N/A	TCK-152 22 μ H, 0.5 A
TRS 2-48xx	2.2 μ F / 100 V 1206 MLCC	1 μ F / 100 V 1206 MLCC	150 pF / 2 kV 1206 MLCC	N/A	TCK-148 82 μ H, 0.25 A

Suggested components to comply with EN 55032 Class B limits					
Model	C1	C2	C3	C4	L1
TRS 2-09xx	22 μ F / 16 V 1206 MLCC	22 μ F / 16 V 1206 MLCC	150 pF / 2 kV 1206 MLCC	N/A	TCK-151 4.7 μ H, 1.4 A
TRS 2-12xx	10 μ F / 25 V 1206 MLCC	10 μ F / 25 V 1206 MLCC	150 pF / 2 kV 1206 MLCC	N/A	TCK-147 15 μ H, 0.6 A
TRS 2-24xx	4.7 μ F / 50 V 1206 MLCC	4.7 μ F / 50 V 1206 MLCC	150 pF / 2 kV 1206 MLCC	N/A	TCK-152 22 μ H, 0.5 A
TRS 2-48xx	2.2 μ F / 100 V 1206 MLCC	2.2 μ F / 100 V 1206 MLCC	150 pF / 2 kV 1206 MLCC	N/A	TCK-148 82 μ H, 0.25 A

TCK datasheets

TCK-147: www.tracopower.com/overview/tck-147

TCK-148: www.tracopower.com/overview/tck-148

TCK-151: www.tracopower.com/overview/tck-151

TCK-152: www.tracopower.com/overview/tck-152