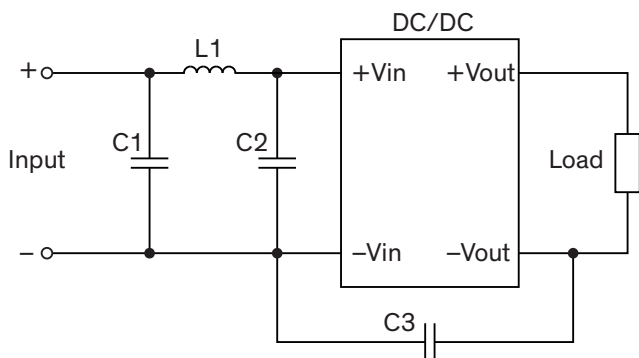


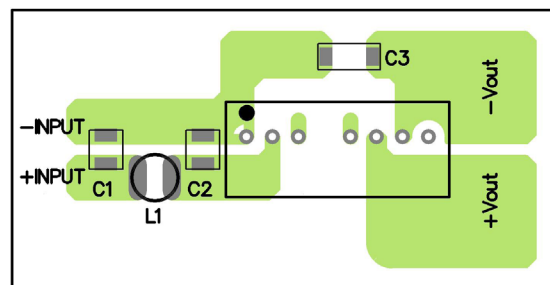
### EMI Consideration

Suggested filter to comply with EN 55032 Class A limits

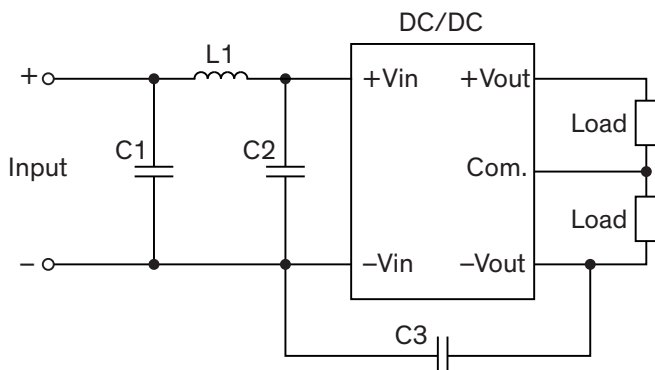
#### Single output models



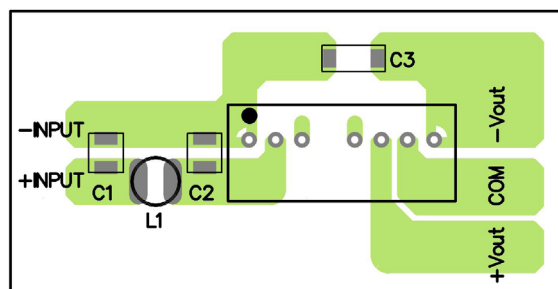
PCB layout suggestion



#### Dual output models



PCB layout suggestion



### Suggested components to comply with EN 55032 Class A limits

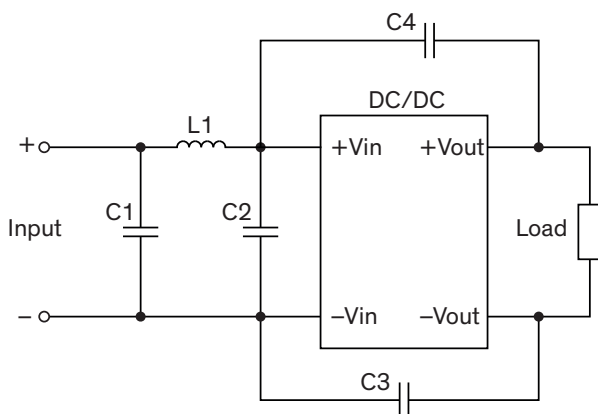
Model	C1	C2	C3	L1
TEC 2-09xx	10 $\mu$ F / 16 V 1206 MLCC	4.7 $\mu$ F / 16 V 1206 MLCC	150 pF / 2 kV 1206 MLCC	4.7 $\mu$ H / 1.15 A SMD-Inductor TCK-154
TEC 2-12xx	4.7 $\mu$ F / 25 V 1206 MLCC	2.2 $\mu$ F / 25 V 1206 MLCC	N/A	4.7 $\mu$ H / 1.15 A SMD-Inductor TCK-154
TEC 2-24xx	2.2 $\mu$ F / 50 V 1206 MLCC	N/A	150 pF / 2 kV 1206 MLCC	68 $\mu$ H / 0.37 A SMD-Inductor TCK-133
TEC 2-48xx	2.2 $\mu$ F / 100 V 1206 MLCC	N/A	150 pF / 2 kV 1206 MLCC	68 $\mu$ H / 0.37 A SMD-Inductor TCK-133

TCK-154 datasheet: [www.tracopower.com/overview/tck-154](http://www.tracopower.com/overview/tck-154)

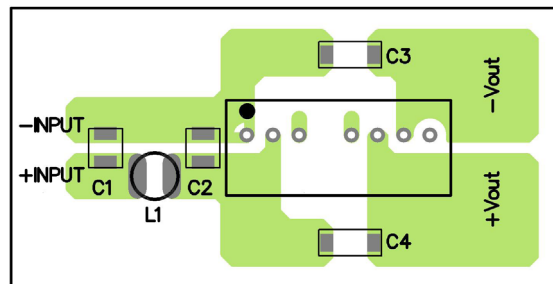
TCK-133 datasheet: [www.tracopower.com/overview/tck-133](http://www.tracopower.com/overview/tck-133)

### Suggested filter to comply with EN 55032 Class B limits

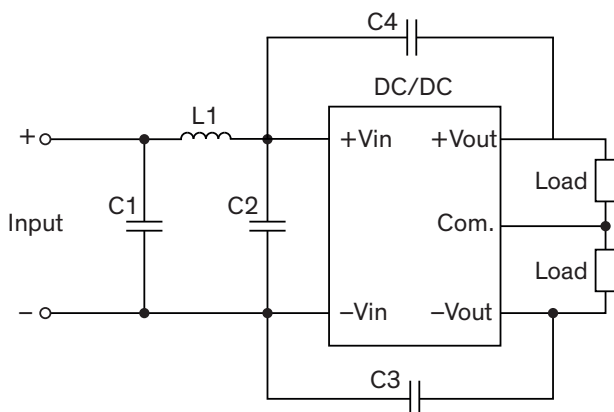
#### Single output models



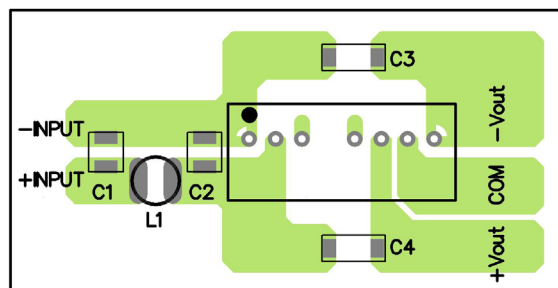
#### PCB layout suggestion



#### Dual output models



#### PCB layout suggestion



### Suggested components to comply with EN 55032 Class B limits

Model	C1	C2	C3	C4	L1
TEC 2-09xx	10 $\mu$ F / 16 V 1206 MLCC	10 $\mu$ F / 16 V 1206 MLCC	220 pF / 2 kV 1206 MLCC	150 pF / 2 kV 1206 MLCC	4.7 $\mu$ H / 1.15 A SMD-Inductor TCK-154
TEC 2-12xx	10 $\mu$ F / 25 V 1206 MLCC	4.7 $\mu$ F / 25 V 1206 MLCC	150 pF / 2 kV 1206 MLCC	N/A	4.7 $\mu$ H / 1.15 A SMD-Inductor TCK-154
TEC 2-24xx	2.2 $\mu$ F / 50 V 1206 MLCC	2.2 $\mu$ F / 50 V 1206 MLCC	150 pF / 2 kV 1206 MLCC	680 pF / 2 kV 1206 MLCC	68 $\mu$ H / 0.37 A SMD-Inductor TCK-133
TEC 2-48xx	2.2 $\mu$ F / 100 V 1206 MLCC	1 $\mu$ F / 100 V 1206 MLCC	150 pF / 2 kV 1206 MLCC	N/A	68 $\mu$ H / 0.37 A SMD-Inductor TCK-133

TCK-154 datasheet: [www.tracopower.com/overview/tck-154](http://www.tracopower.com/overview/tck-154)

TCK-133 datasheet: [www.tracopower.com/overview/tck-133](http://www.tracopower.com/overview/tck-133)