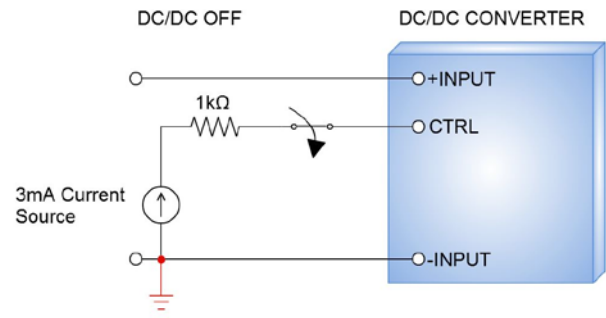
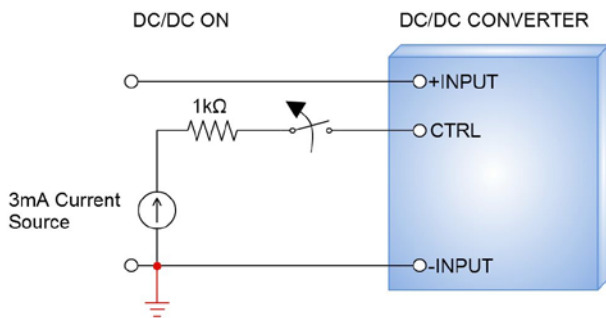


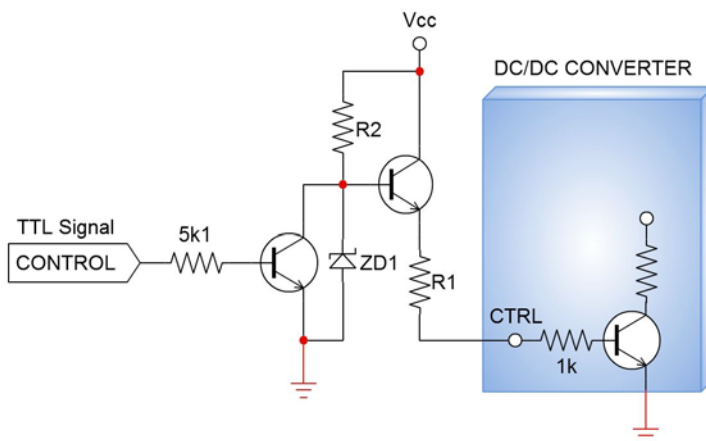
Remote On/Off

The TMR6 Series model have a positive logic remote ON/OFF control circuit included. The CTRL pin (pin 3) is an open collector/drain logic input that refers to -INPUT. It means the module is turned on during a logic high and turned off during a logic low. If remote On/Off feature is not used please keep the CTRL pin open.



Remote Control with TTL signal

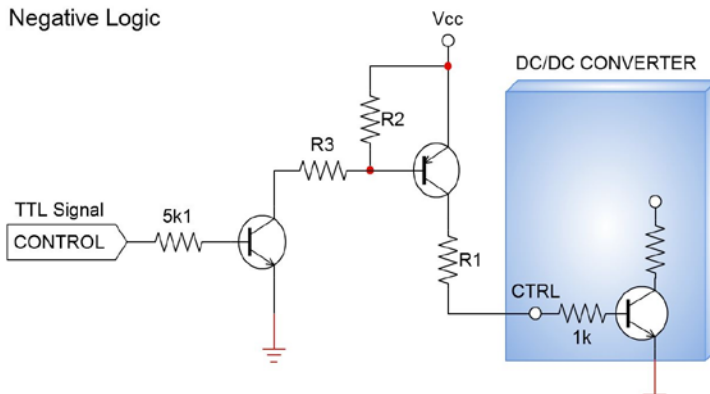
Positive Logic (TTL high = Off / TTL low = On)



| input range [VDC] | R1 [kOhm] | R2 [kOhm] | ZD1 [V] |
|-------------------|-----------|-----------|-----------|
| 4.5 - 9 | 0 | 7.5 | 5.1; 5 mA |
| 9 - 18 | 2.2 | 16 | 10; 5 mA |
| 18 - 36 | 6.8 | 33 | 18; 5 mA |
| 36 - 75 | 15 | 68 | 36; 5 mA |

Negative Logic (TTL high = On / TTL low = Off)

Negative Logic



| input range [VDC] | R1 [kOhm] | R2 [kOhm] | R3 [kOhm] |
|-------------------|-----------|-----------|-----------|
| 4.5 - 9 | 0.36 | 5.1 | 7.5 |
| 9 - 18 | 2.7 | 5.1 | 16 |
| 18 - 36 | 7.5 | 5.1 | 33 |
| 36 - 75 | 16 | 5.1 | 68 |