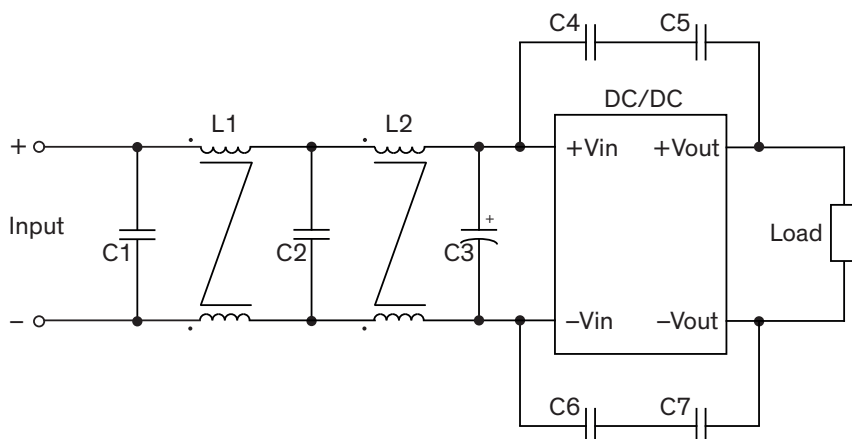


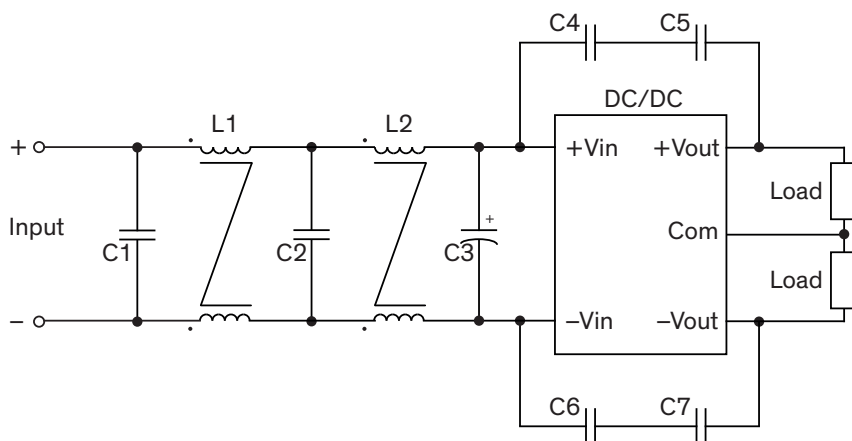
### EMI Consideration

Suggested filter to comply with EN 55032 Conducted Emissions Class B limits

#### Single output models



#### Dual output models



#### Suggested components to comply with EN 55032 Conducted Emissions Class B limits

Model	C1, C2	L1	L2	C3	C4, C5, C6, C7
TRI 15-12xx	3.3 $\mu$ F / 100 V 1210 MLCC	0.4 mH / 3.6 A 74461240004	33 mH / 2.5 A 7448030333	330 $\mu$ F / 100V CHEMI-CON KY	2200 pF Y1 Cap.
TRI 15-24xx	3.3 $\mu$ F / 100 V 1210 MLCC	0.4 mH / 3.6 A 74461240004	33 mH / 2.5 A 7448030333	330 $\mu$ F / 100V CHEMI-CON KY	2200 pF Y1 Cap.
TRI 15-48xx	3.3 $\mu$ F / 100 V 1210 MLCC	0.4 mH / 3.6 A 74461240004	33 mH / 2.5 A 7448030333	330 $\mu$ F / 100V CHEMI-CON KY	2200 pF Y1 Cap.