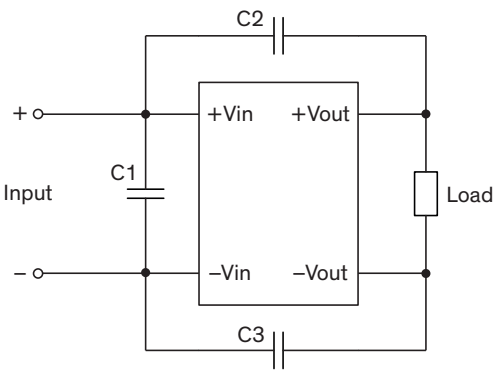


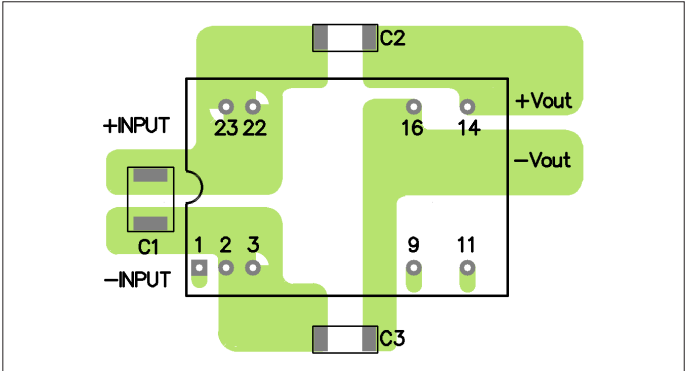
EMI Consideration

Suggested filter to comply with EN 55032 Conducted and Radiated Emissions Class A limits

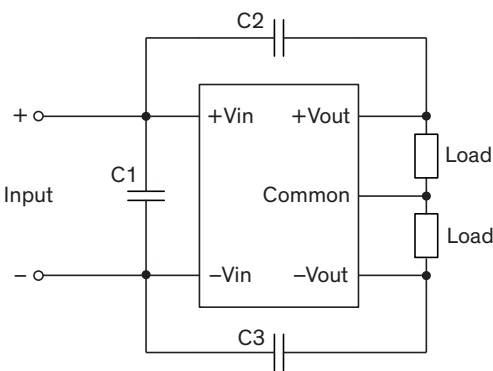
Single output models



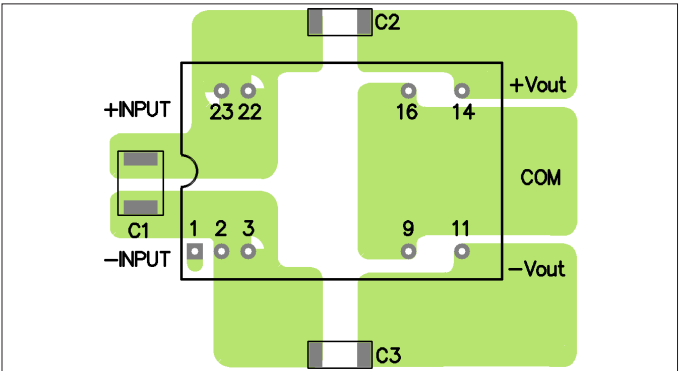
PCB layout suggestion



Dual output models



PCB layout suggestion

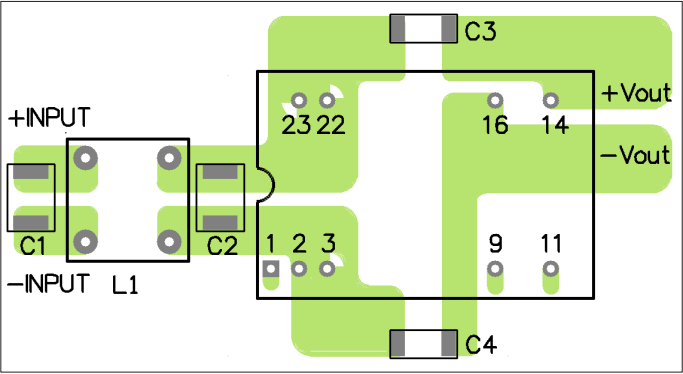
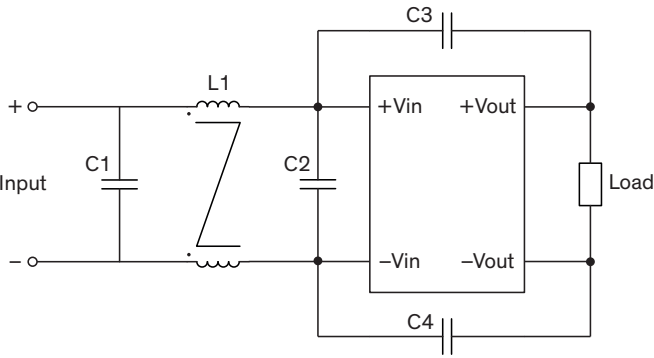


Suggested components to comply with EN 55032 Conducted and Radiated Emissions Class A limits			
Model	C1	C2	C3
TEN 8-12xx	4.7 μ F / 25 V / 1210 MLCC	1000 pF / 2 kV / 1206 MLCC	1000 pF / 2 kV / 1206 MLCC
TEN 8-24xx			
TEN 8-48xx			

Suggested filter to comply with EN 55032 Conducted and Radiated Emissions Class B limits

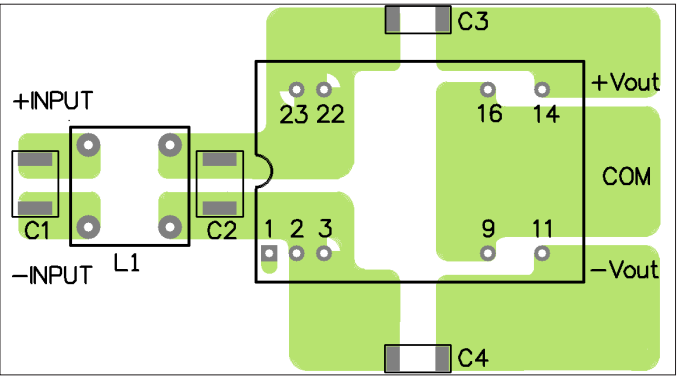
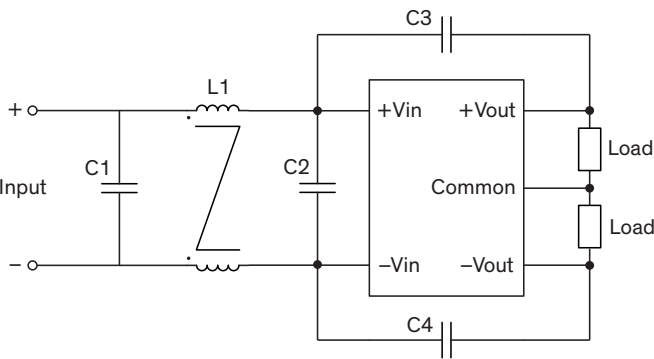
Single output models

PCB layout suggestion



Dual output models

PCB layout suggestion



Suggested components to comply with EN 55032 Conducted and Radiated Emissions Class B limits

Model	C1	C2	C3, C4	L1
TEN 8-12xx	4.7 μ F / 50 V 1812 MLCC	-	1000 pF / 2 kV 1206 MLCC	325 μ H TCK-050
TEN 8-24xx	6.8 μ F / 50 V 1812 MLCC			
TEN 8-48xx	2.2 μ F / 100 V 1812 MLCC	2.2 μ F / 100 V 1812 MLCC		

TCK-050 datasheet: www.tracopower.com/overview/tck-050