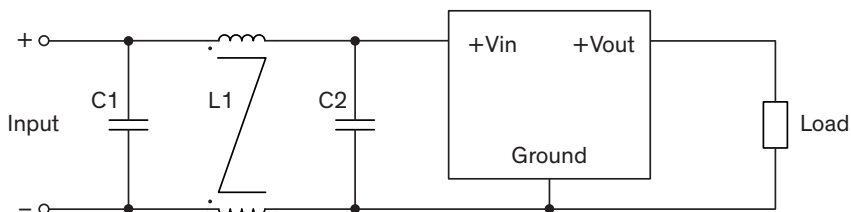


EMI Consideration

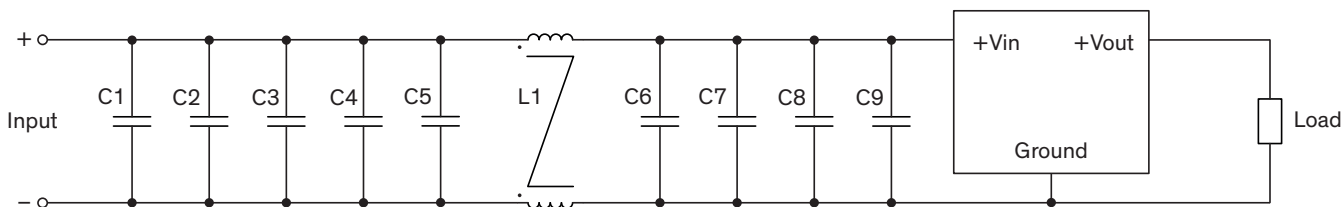
Suggested filter to comply with EN 55032 Conducted and Radiated Emissions Class A limits



Suggested components to comply with EN 55032 Conducted and Radiated Emissions Class A limits

Model	C1, C2	L1
TSR 1.5-2433E TSR 1.5-2450E	10 μ F / 50 V MLCC	700 Ω / 5.0 A / 50 V PCM090704S-701
TSR 1.5-24120E	10 μ F / 50 V / MLCC	1000 Ω / 4.0 A / 50 V PCM090704S-102

Suggested filter to comply with EN 55032 Conducted and Radiated Emissions Class B limits



Suggested components to comply with EN 55032 Conducted and Radiated Emissions Class B limits

Model	C1	C2, C3	C4, C5	C6	C7, C8, C9	L1
TSR 1.5-2433E TSR 1.5-2450E	100 μ F / 50 V Aluminum electrolytic solid cap.	10 μ F / 50 V MLCC	-	100 μ F / 50 V Aluminum electrolytic solid cap.	10 μ F / 50 V MLCC	700 Ω / 5.0 A / 50 V PCM090704S-701
TSR 1.5-24120E	100 μ F / 50 V Aluminum electrolytic solid cap.	100 μ F / 50 V Aluminum electrolytic solid cap.	10 μ F / 50 V MLCC	100 μ F / 50 V Aluminum electrolytic solid cap.	10 μ F / 50 V MLCC	1000 Ω / 4.0 A / 50 V PCM090704S-102