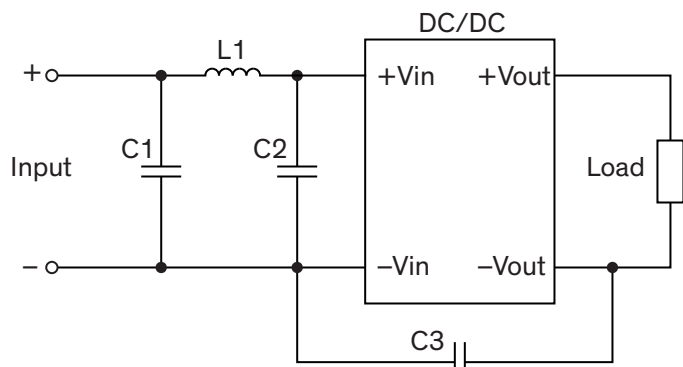


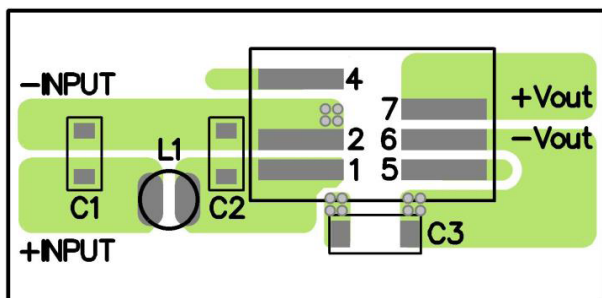
EMI Consideration

Suggested filter to comply with EN 55032 Class A resp. B limits

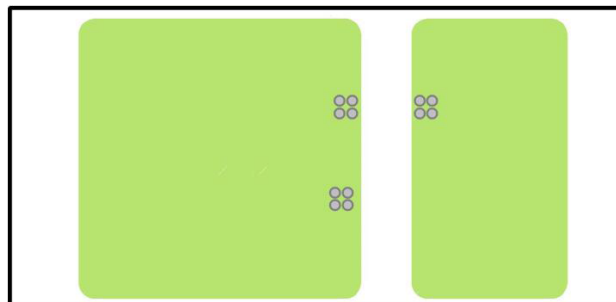
Single output models



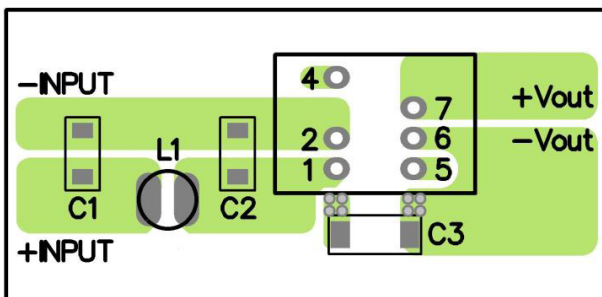
SMD models: Top view



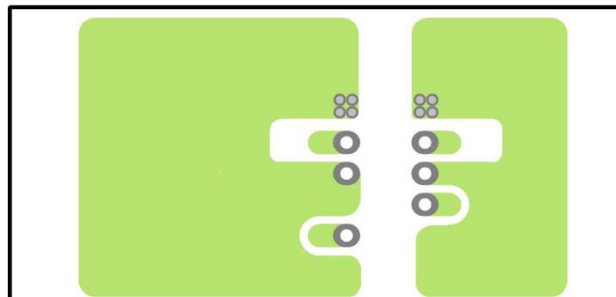
SMD models: Bottom view



DIP models: Top view

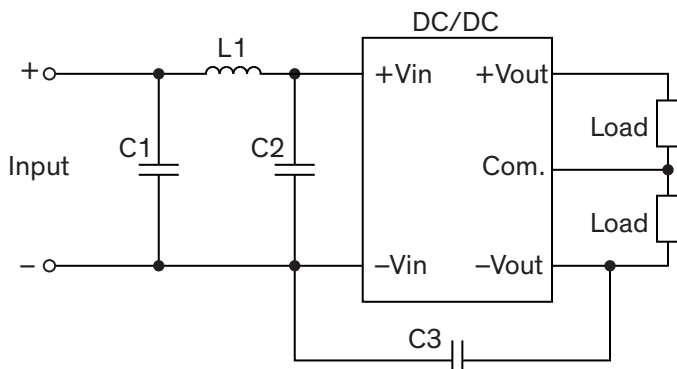


DIP models: Bottom view

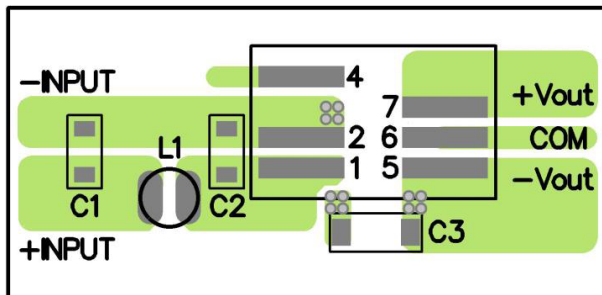


Suggested filter to comply with EN 55032 Class A resp. B limits

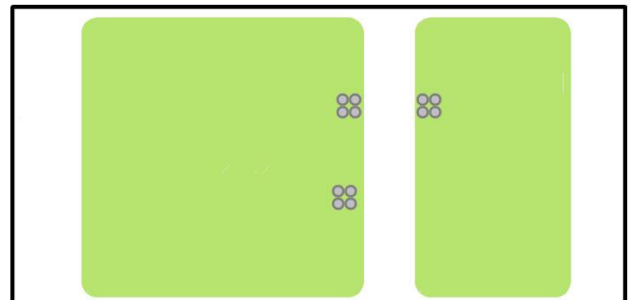
Dual output models



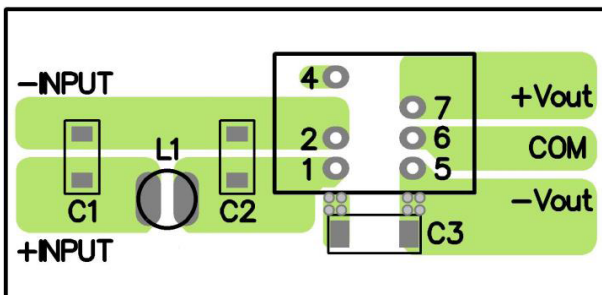
SMD models: Top view



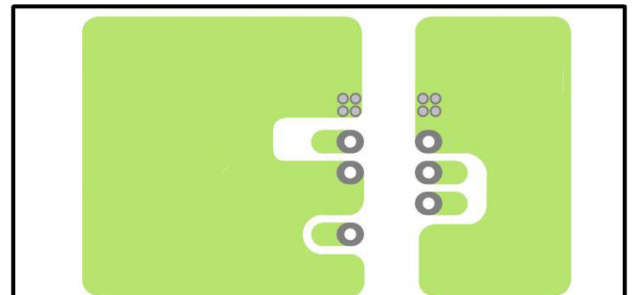
SMD models: Bottom view



DIP models: Top view



DIP models: Bottom view



Suggested components

Suggested components to comply with EN 55032 Class A limits				
Model	C1	C2	C3	L1
TDN 1-12xxWI(SM)	10 μ F / 25 V 1206 MLCC	N/A	N/A	4.7 μ H / 1.4 A TCK-151
TDN 1-24xxWI(SM)	4.7 μ F / 50 V 1206 MLCC	N/A	N/A	22 μ H / 0.5 A TCK-130
TDN 1-48xxWI(SM)	2.2 μ F / 100 V 1206 MLCC	N/A	150 pF / 3 kV 1808 MLCC	39 μ H / 0.35 A TCK-155

Suggested components to comply with EN 55032 Class B limits				
Model	C1	C2	C3	L1
TDN 1-12xxWI(SM)	10 μ F / 25 V 1206 MLCC	10 μ F / 25 V 1206 MLCC	100 pF / 3 kV 1808 MLCC	4.7 μ H / 1.4 A TCK-151
TDN 1-24xxWI(SM)	4.7 μ F / 50 V 1206 MLCC	4.7 μ F / 50 V 1206 MLCC	150 pF / 3 kV 1808 MLCC	22 μ H / 0.5 A TCK-130
TDN 1-48xxWI(SM)	2.2 μ F / 100 V 1206 MLCC	2.2 μ F / 100 V 1206 MLCC	150 pF / 3 kV 1808 MLCC	39 μ H / 0.35 A TCK-155

Datasheets for Common Mode Chokes

TCK-151: www.tracopower.com/overview/tck-151

TCK-130: www.tracopower.com/overview/tck-130

TCK-155: www.tracopower.com/overview/tck-155