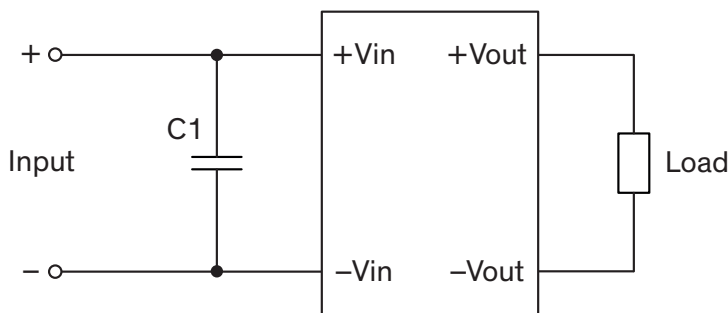


EMI Consideration

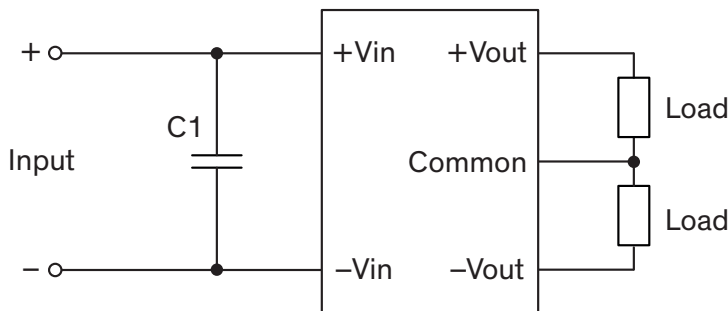
Suggested filter to comply with EN 55032 Radiated Emissions Class A limits
TMH series meet EN 55032 Radiated Emissions Class A without external components.

Suggested filter to comply with EN 55032 Conducted Emissions Class A limits

Single output models



Dual output models



Suggested components to comply with EN 55032 Conducted Emissions Class A limits

Model	C1
TMH 05xxx	3.3 μ F / 25 V / 1206 MLCC
TMH 12xxx TMH 24xxx	1 μ F / 50 V / 1206 MLCC