

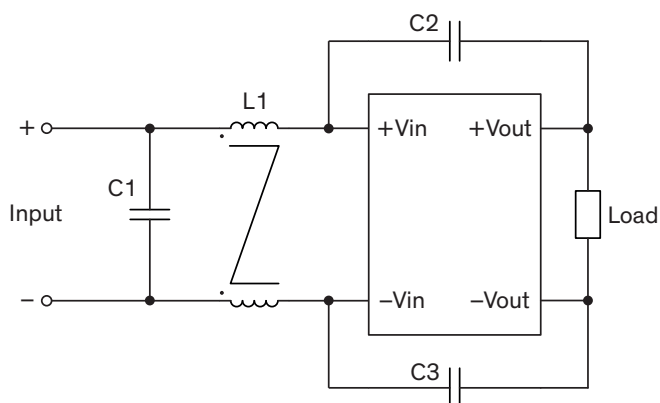
### EMI Consideration

#### Suggested filter to comply with EN 55032 Conducted Emissions Class A limits

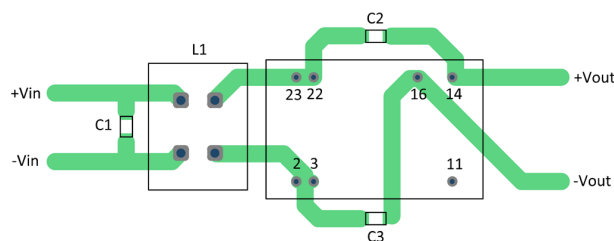
TEN 6WIN(-HI) series fulfills EN 55032 Conducted Emissions Class A without external components.

#### Suggested filter to comply with EN 55032 Radiated Emissions Class A limits

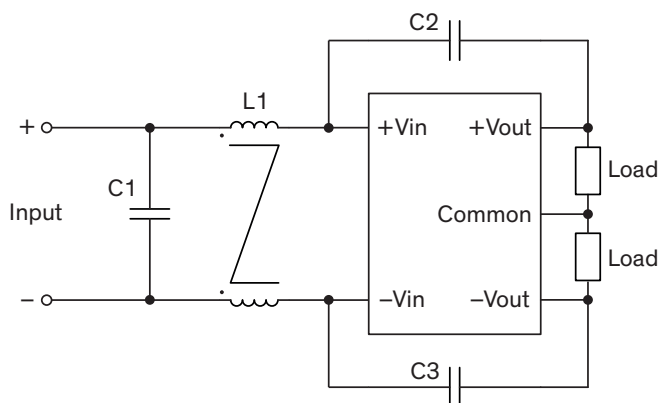
#### Single output models



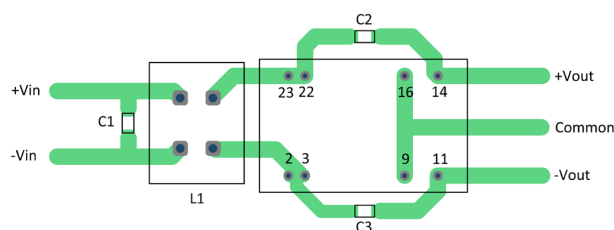
#### Layout suggestion Top View



#### Dual output models



#### Layout suggestion Top View



#### Suggested components to comply with EN 55032 Radiated Emissions Class A limits

Model	C1	L1	C2, C3
TEN 6-24xxWIN TEN 6-24xxWIN-HI	10 $\mu$ F / 50 V / 1206 X5R	175 $\mu$ H / 10 A 74482210002	1.5 nF / 2 kV 1206 X7R
TEN 6-48xxWIN TEN 6-48xxWIN-HI	2.2 $\mu$ F / 100 V / 1206 X7R		