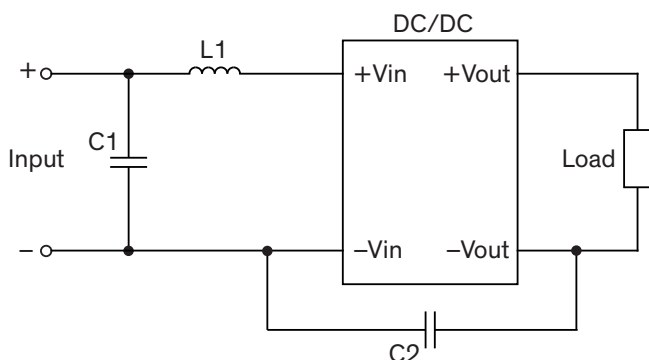


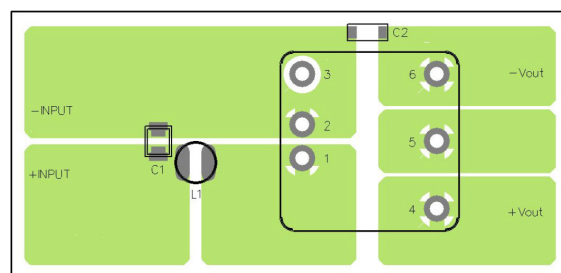
### EMI Consideration

Suggested filter to comply with EN 55032 Conducted and Radiated Emissions Class B limits

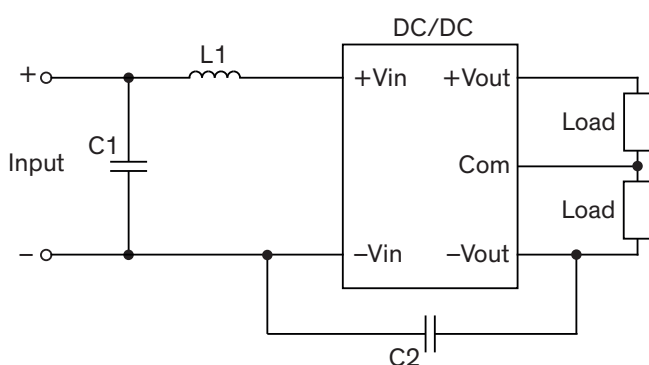
#### Single output models



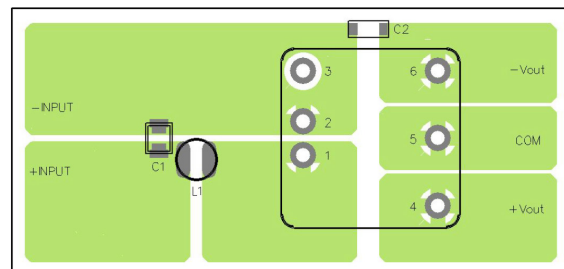
#### PCB layout suggestion



#### Dual output models



#### PCB layout suggestion



### Suggested components to comply with EN 55032 Conducted and Radiated Emissions Class B limits

Model	C1	C2	L1
THN 10-24xxWIR	10 $\mu$ F / 50 V 1210 MLCC	680 pF / 3 kV 1808 MLCC	1.1 $\mu$ H / TCK-078
THN 10-48xxWIR	2.2 $\mu$ F / 100 V 1210 MLCC	680 pF / 3 kV 1808 MLCC	10 $\mu$ H / TCK-047
THN 10-72xxWIR	1 $\mu$ F / 250 V 1812 MLCC	680 pF / 3 kV 1808 MLCC	22 $\mu$ H / TCK-156

TCK-078 datasheet: [www.tracopower.com/overview/tck-078](http://www.tracopower.com/overview/tck-078)

TCK-047 datasheet: [www.tracopower.com/overview/tck-047](http://www.tracopower.com/overview/tck-047)

TCK-156 datasheet: [www.tracopower.com/overview/tck-156](http://www.tracopower.com/overview/tck-156)