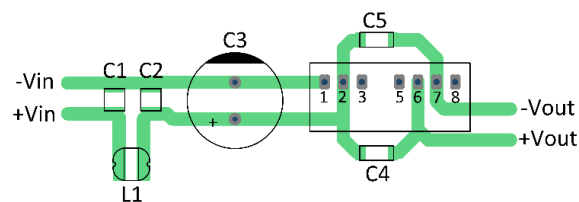
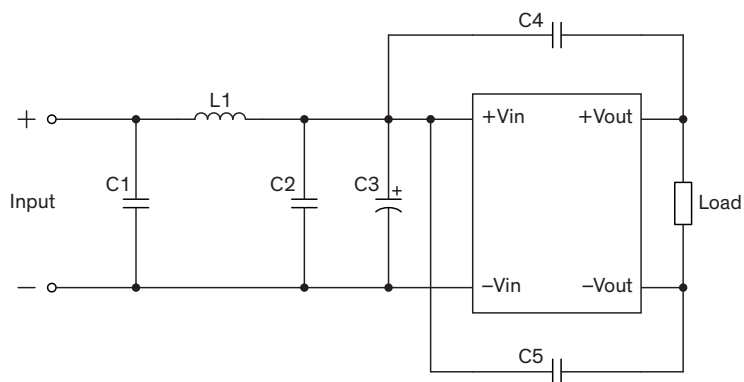


### EMI Consideration

#### Suggested filter to comply with EN 55032 Conducted and Radiated Emissions Class A limits

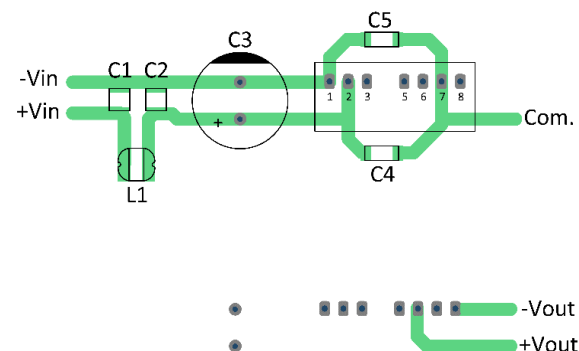
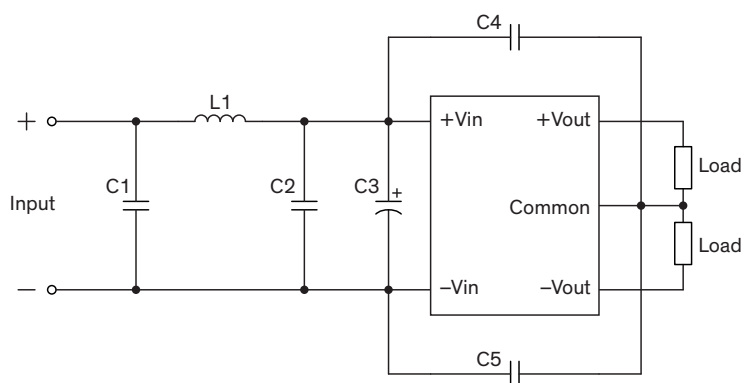
##### Single output models

##### PCB layout suggestion



##### Dual output models

##### PCB layout suggestion



#### Suggested components to comply with EN 55032 Conducted and Radiated Emissions Class A limits

Model	C1, C2	L1	C3	C4, C5
TMR 2-xxxxWIN	4.7 $\mu$ F / 100 V 1210 X7S	4.7 $\mu$ H / 1.82 A 744773047	220 $\mu$ F / 100 V / KYA	220 pF / 2 kV 1808 X7R