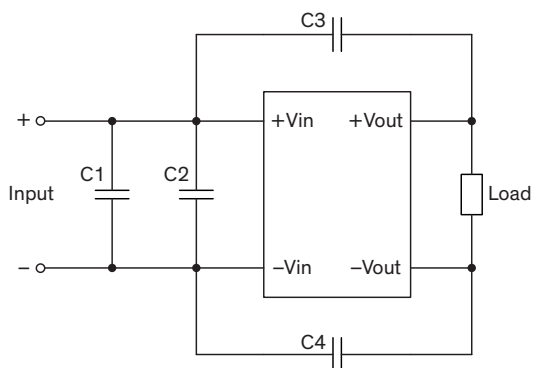


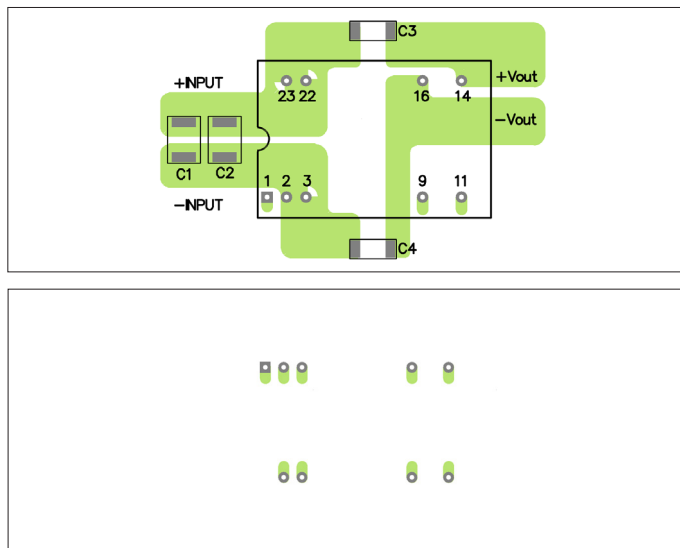
EMI Consideration

Suggested filter to comply with EN 55032 Radiated Emissions Class A limits

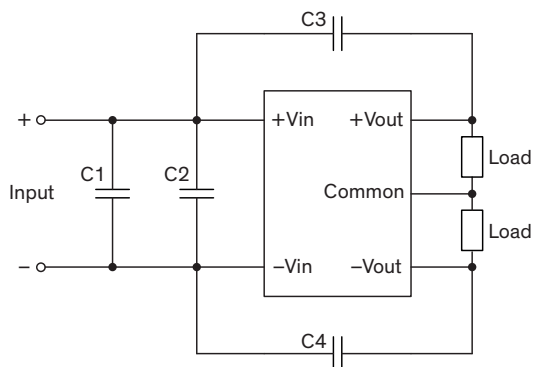
Single output models



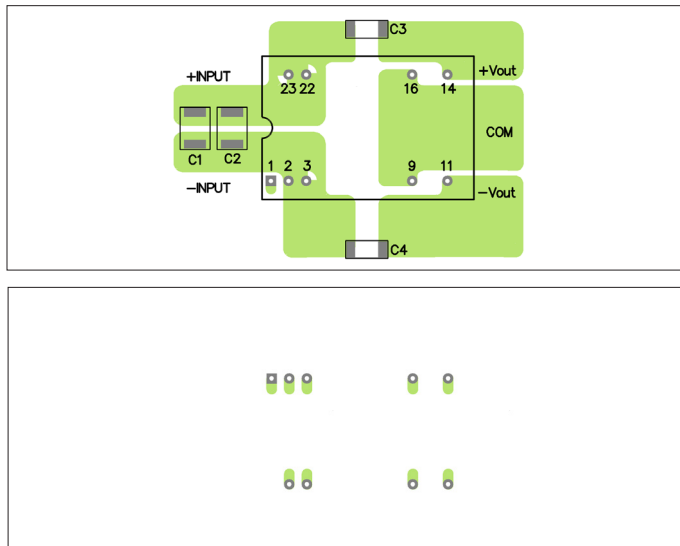
PCB layout suggestion



Dual output models



PCB layout suggestion



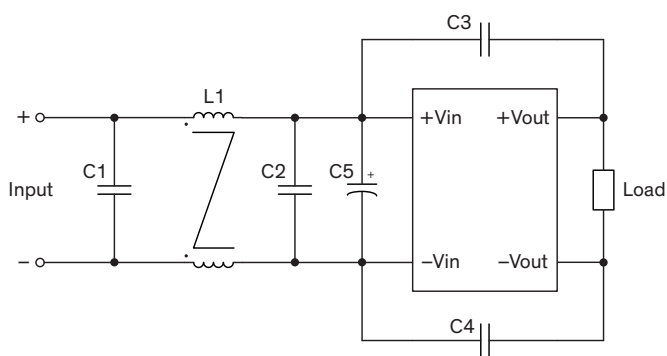
Suggested components to comply with EN 55032 Radiated Emissions Class A limits

Model	C1	C2	C3, C4
TEN 8-24xxWI	1 μ F / 50 V 1210 MLCC	-	1000 pF / 2 kV 1206 MLCC
TEN 8-48xxWI	0.47 μ F / 100 V 1812 MLCC	-	1000 pF / 2 kV 1206 MLCC
TEN 8-72xxWI	1 μ F / 250 V 1812 MLCC	1 μ F / 250 V 1812 MLCC	1000 pF / 2 kV 1206 MLCC

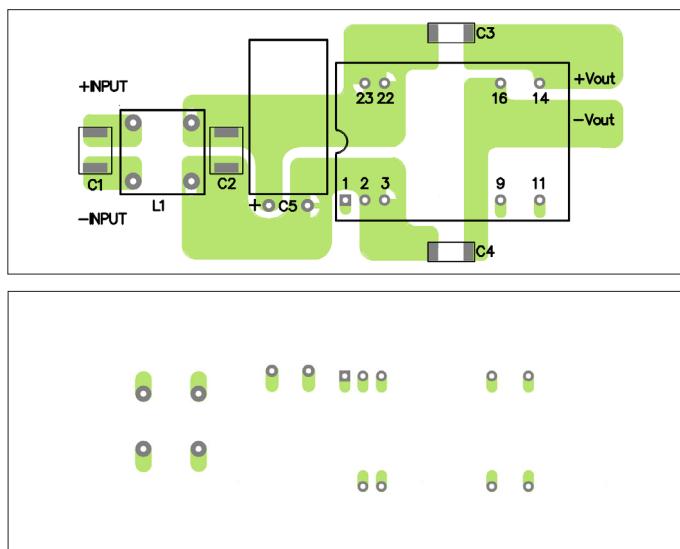
EMI Consideration

Suggested filter to comply with EN 55032 Radiated Emissions Class B limits

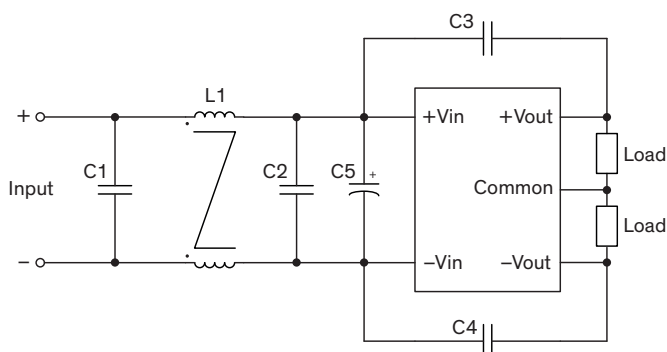
Single output models



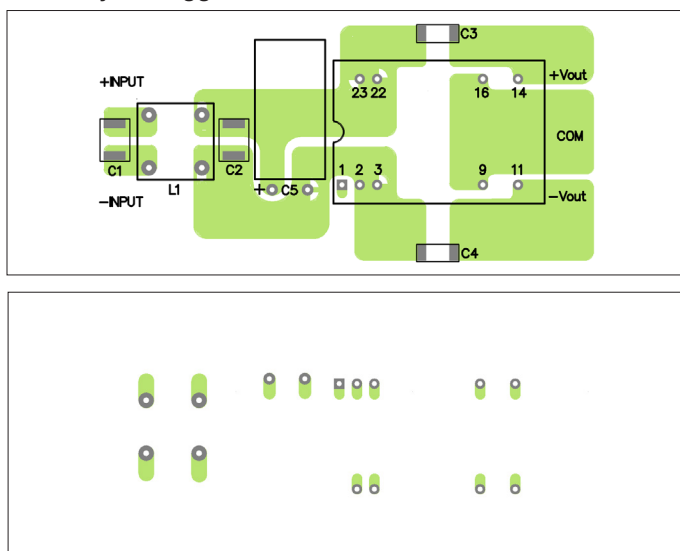
PCB layout suggestion



Dual output models



PCB layout suggestion



Suggested components to comply with EN 55032 Radiated Emissions Class B limits

Model	C1	C2	C3, C4	C5	L1
TEN 8-24xxWI	4.7 μ F / 50 V 1812 MLCC	-	1000 pF / 2 kV 1206 MLCC	-	325 μ H / TCK-050
TEN 8-48xxWI	1.5 μ F / 100 V 1812 MLCC	1.5 μ F / 100 V 1812 MLCC	1000 pF / 2 kV 1206 MLCC	-	325 μ H / TCK-050
TEN 8-72xxWI	1 μ F / 250 V 1812 MLCC	-	1000 pF / 2 kV 1206 MLCC	22 μ F / 200 V KMF	497 μ H / TCK-017

TCK-050 datasheet: www.tracopower.com/overview/tck-050

TCK-017 datasheet: www.tracopower.com/overview/tck-017