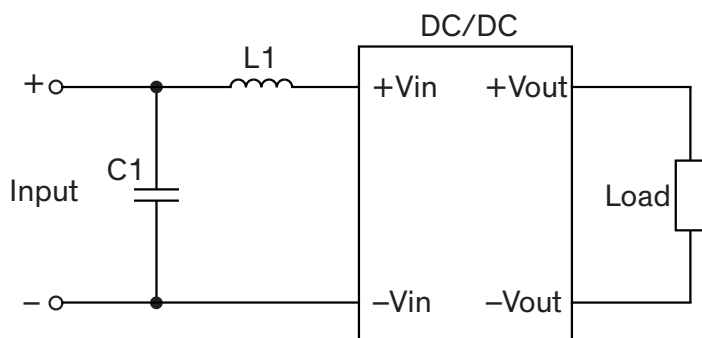


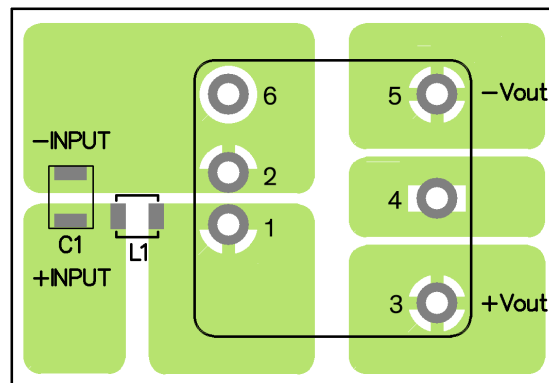
### EMI Consideration

Suggested filter to comply with EN 55032 Class A limits

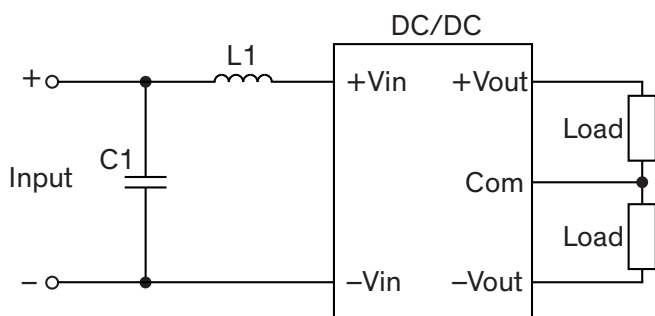
#### Single output models



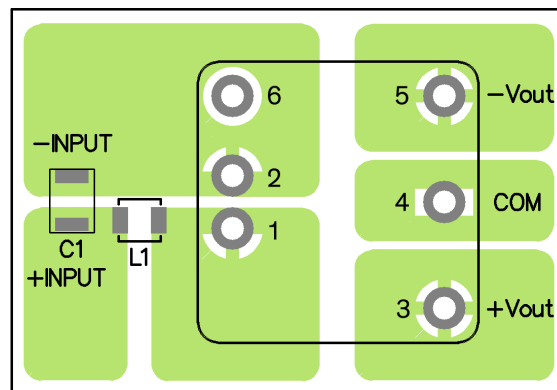
PCB layout suggestion



#### Dual output models



PCB layout suggestion



### Suggested components to comply with EN 55032 Class A limits

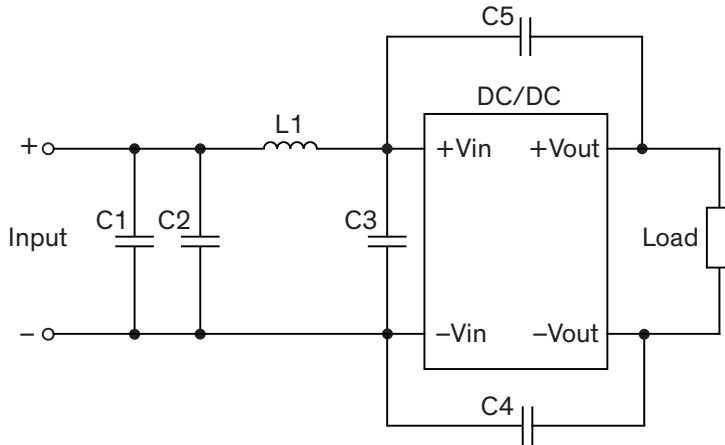
Model	C1	L1
THN 30-24xxWI	4.7 $\mu$ F / 50 V 1812 MLCC	2.2 $\mu$ H / 11 A / 0.012 Ohm SMD-Inductor, TCK-097
THN 30-48xxWI	4.7 $\mu$ F / 100 V 1812 MLCC	10 $\mu$ H / 2.6 A / 0.04 Ohm SMD-Inductor, TCK-070

TCK-097 datasheet: [www.tracopower.com/overview/tck-097](http://www.tracopower.com/overview/tck-097)

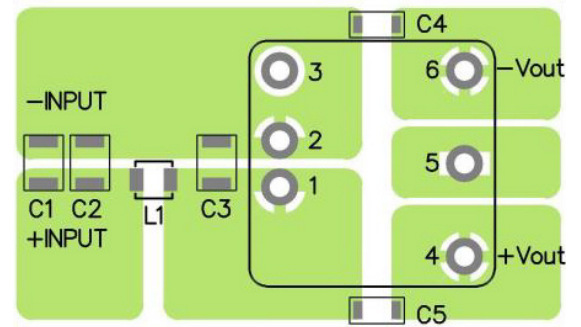
TCK-070 datasheet: [www.tracopower.com/overview/tck-070](http://www.tracopower.com/overview/tck-070)

### Suggested filter to comply with EN 55032 Class B limits

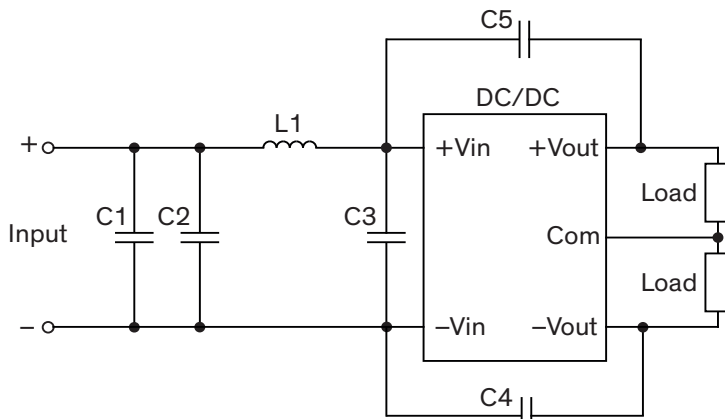
#### Single output models



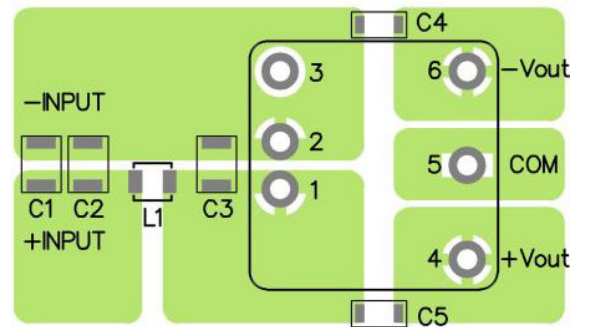
#### PCB layout suggestion



#### Dual output models



#### PCB layout suggestion



### Suggested components to comply with EN 55032 Class B limits

Model	C1, C2, C3	C4, C5	L1
THN 30-24xxWI	4.7 $\mu$ F / 50 V 1812 MLCC	1000 pF / 2 kV 1206 MLCC	2.2 $\mu$ H / 11 A / 0.012 Ohm SMD-Inductor, TCK-097
THN 30-48xxWI	4.7 $\mu$ F / 100 V 1812 MLCC	2200 pF / 2 kV 1206 MLCC	10 $\mu$ H / 2.6 A / 0.04 Ohm SMD-Inductor, TCK-070

TCK-097 datasheet: [www.tracopower.com/overview/tck-097](http://www.tracopower.com/overview/tck-097)

TCK-070 datasheet: [www.tracopower.com/overview/tck-070](http://www.tracopower.com/overview/tck-070)