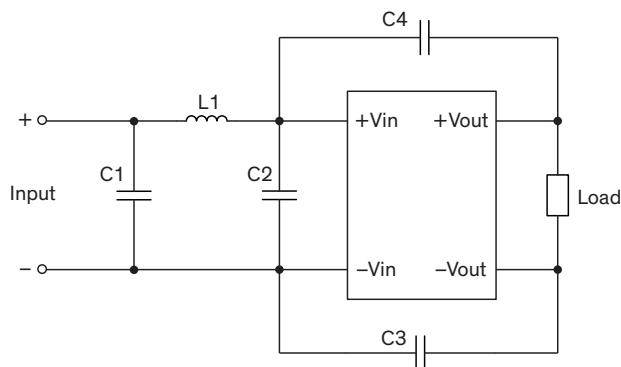


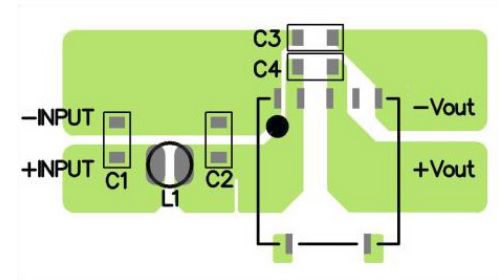
EMI Consideration

Suggested filter to comply with EN 55032 Class A resp. B limits

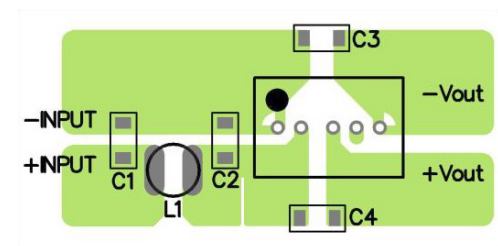
Single output models



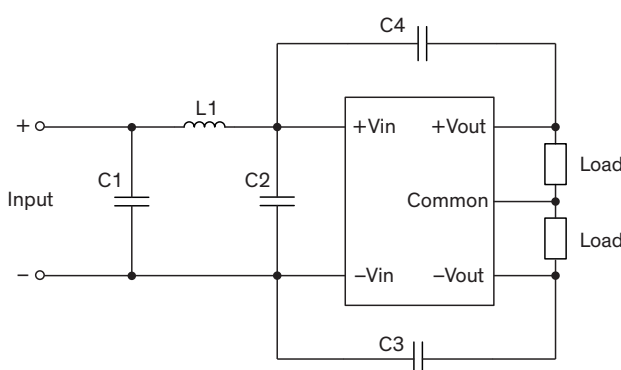
SMD models



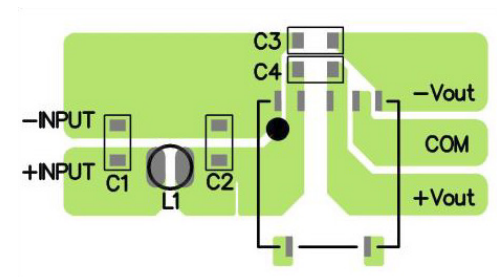
DIP models



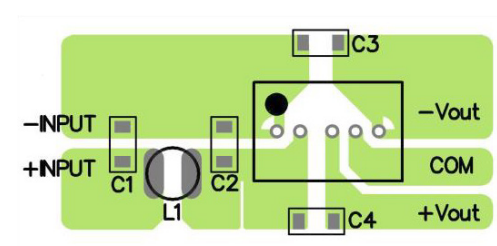
Dual output models



SMD models



DIP models



Suggested components

Suggested components to comply with EN 55032 Class A limits					
Model	C1	C2	C3	C4	L1
TRN 3-05xx(SM)	22 μ F / 16 V 1206 MLCC	N/A	150 pF / 2 kV 1206 MLCC	N/A	TCK-154 4.7 μ H, 1.15 A
TRN 3-12xx(SM)	10 μ F / 25 V 1206 MLCC	N/A	150 pF / 2 kV 1206 MLCC	N/A	TCK-111 10 μ H, 1.0 A
TRN 3-24xx(SM)	4.7 μ F / 50 V 1206 MLCC	N/A	330 pF / 2 kV 1206 MLCC	N/A	TCK-132 22 μ H, 0.68 A
TRN 3-48xx(SM)	2.2 μ F / 100 V 1206 MLCC	1 μ F / 100 V 1206 MLCC	330 pF / 2 kV 1206 MLCC	N/A	TCK-133 68 μ H, 0.37 A

Suggested components to comply with EN 55032 Class B limits					
Model	C1	C2	C3	C4	L1
TRN 3-05xx(SM)	22 μ F / 16 V 1206 MLCC	22 μ F / 16 V 1206 MLCC	150 pF / 2 kV 1206 MLCC	N/A	TCK-154 4.7 μ H, 1.15 A
TRN 3-12xx(SM)	22 μ F / 25 V 1206 MLCC	22 μ F / 25 V 1206 MLCC	150 pF / 2 kV 1206 MLCC	N/A	TCK-111 10 μ H, 1.0 A
TRN 3-24xx(SM)	4.7 μ F / 50 V 1206 MLCC	4.7 μ F / 50 V 1206 MLCC	330 pF / 2 kV 1206 MLCC	N/A	TCK-132 22 μ H, 0.68 A
TRN 3-48xx(SM)	2.2 μ F / 100 V 1206 MLCC	2.2 μ F / 100 V 1206 MLCC	330 pF / 2 kV 1206 MLCC	N/A	TCK-133 68 μ H, 0.37 A

TCK datasheets

TCK-111: www.tracopower.com/overview/tck-111

TCK-132: www.tracopower.com/overview/tck-132

TCK-133: www.tracopower.com/overview/tck-133

TCK-154: www.tracopower.com/overview/tck-154