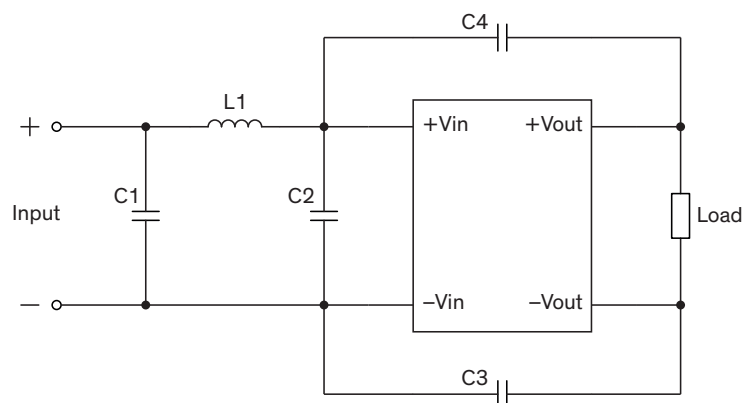


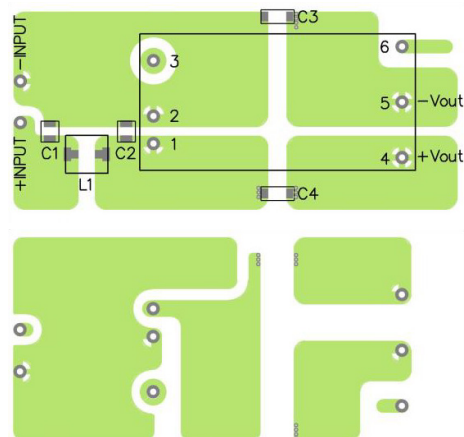
EMI Consideration

Suggested filter to comply with EN 55032 Conducted and Radiated Emissions Class A limits

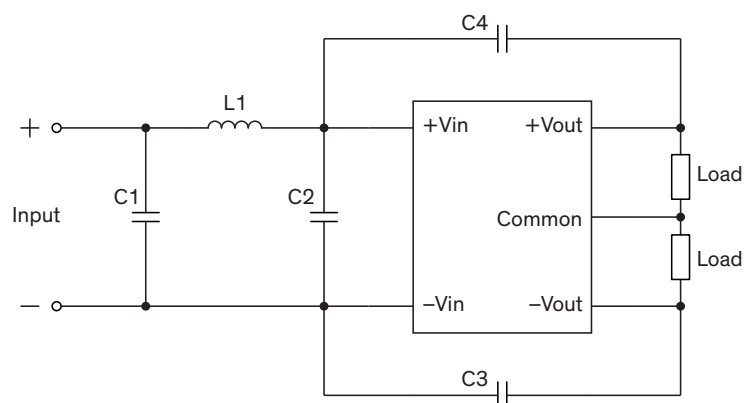
Single output models



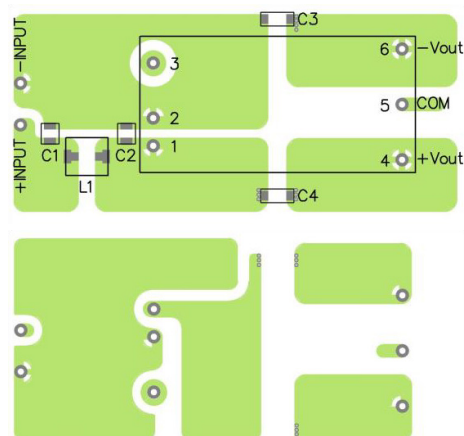
PCB layout suggestion



Dual output models



PCB layout suggestion



Suggested components to comply with EN 55032 Conducted and Radiated Emissions Class A limits

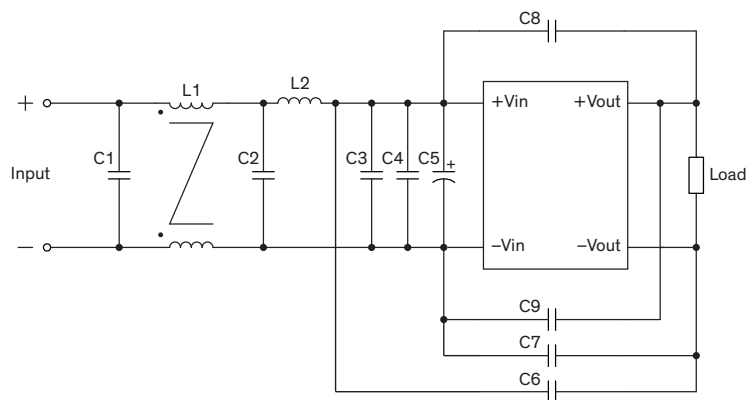
Model	C1, C2	C3, C4	L1
TEN 60-12xxN TEN 60-24xxN TEN 60-24xxWIN	10 μ F / 50 V / 1210 MLCC	1'000 pF / 3 kV / 1808 MLCC	TCK-102
TEN 60-48xxN TEN 60-48xxWIN	4.7 μ F / 100 V / 1210 MLCC		TCK-112

TCK-102 datasheet: www.tracopower.com/overview/tck102

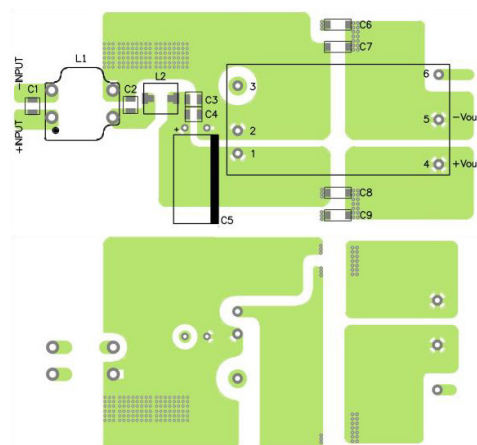
TCK-112 datasheet: www.tracopower.com/overview/tck112

Suggested filter to comply with EN 55032 Conducted and Radiated Emissions Class B limits

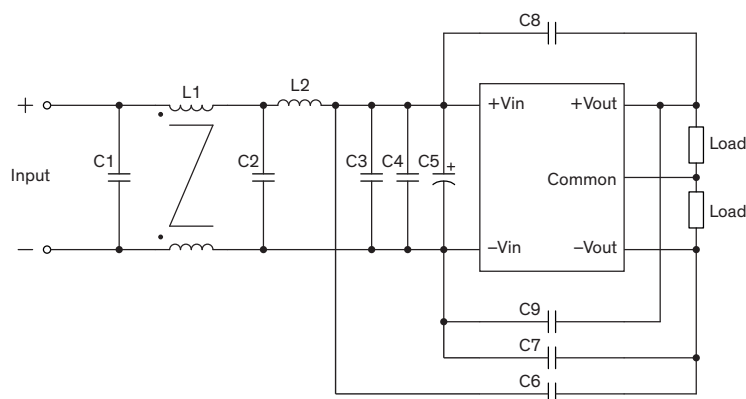
Single output models



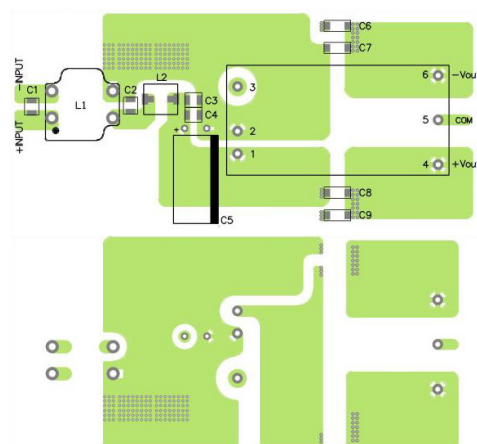
PCB layout suggestion



Dual output models



PCB layout suggestion



Suggested components to comply with EN 55032 Conducted and Radiated Emissions Class B limits

Model	C1, C4	C2, C3	C5	C6, C9	C7, C8	L1	L2
TEN 60-12xxN TEN 60-24xxN TEN 60-24xxWIN	4.7 μ F / 50 V 1210 MLCC	10 μ F / 50 V 1210 MLCC	82 μ F / 100 V Al Cap. (lie down) Chemi-con KY	1'000 pF / 3kV 1808 MLCC	2'200 pF / 3 kV 1808 MLCC	TCK-101	TCK-102
TEN 60-48xxN TEN 60-48xxWIN	4.7 μ F / 100 V 1210 MLCC	4.7 μ F / 100 V 1210 MLCC		2'200 pF / 3 kV 1808 MLCC	1'000 pF / 3 kV 1808 MLCC	TCK-113	TCK-112

TCK-101 datasheet: www.tracopower.com/overview/tck101

TCK-102 datasheet: www.tracopower.com/overview/tck102

TCK-112 datasheet: www.tracopower.com/overview/tck112

TCK-113 datasheet: www.tracopower.com/overview/tck113