

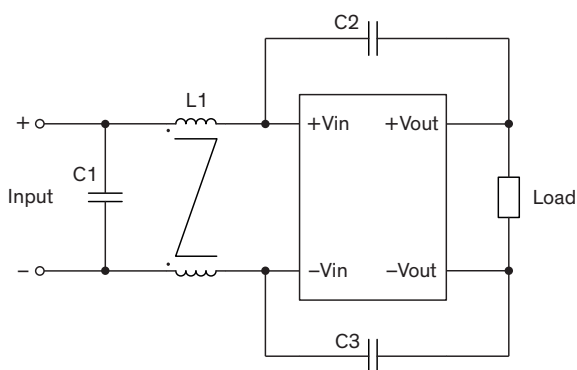
EMI Consideration

Suggested filter to comply with EN 55032 Conducted Emissions Class A limits

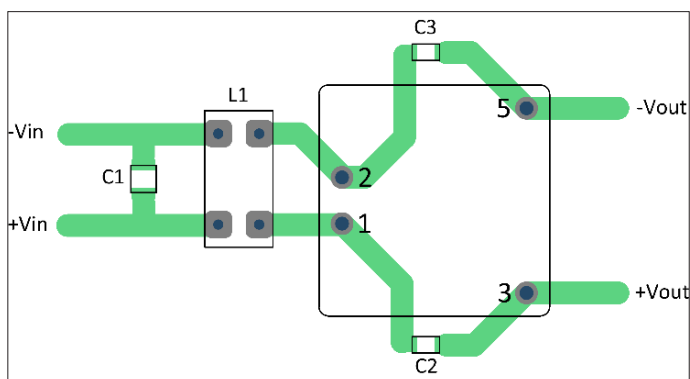
THL 10WI series meet EN 55032 Conducted Emissions Class A without external components.

Suggested filter to comply with EN 55032 Radiated Emissions Class A limits

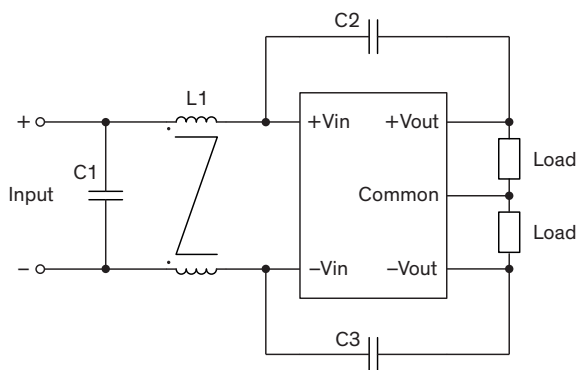
Single output models



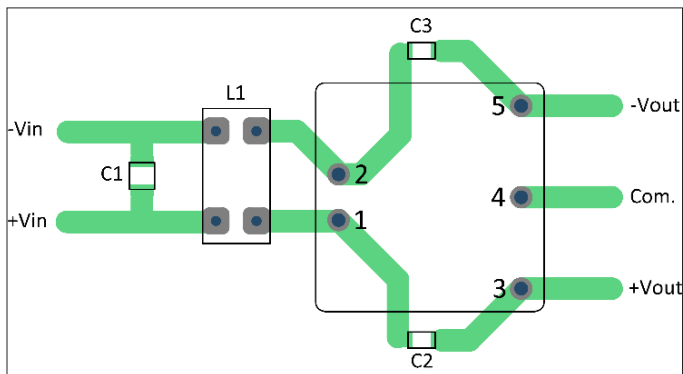
PCB layout suggestion



Dual output models



PCB layout suggestion



Suggested components to comply with EN 55032 Radiated Emissions Class A limits

Model	C1	L1	C2, C3
THL 10-xxxxWI	3.3 μ F / 100 V / 1210 X7S	0.4 mH / 7448014501	1 nF / 2 kV / 1206 X7R