

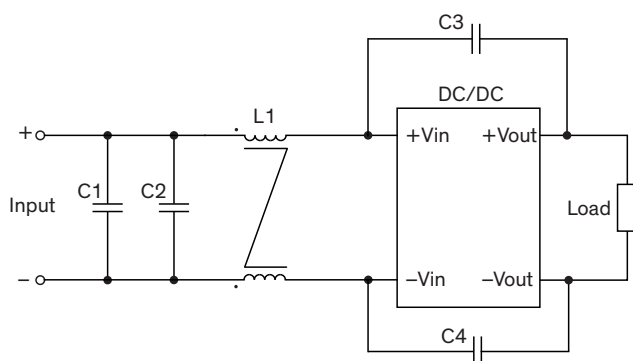
EMI Consideration

Suggested filter to comply with EN 55032 Conducted Emissions Class A limits

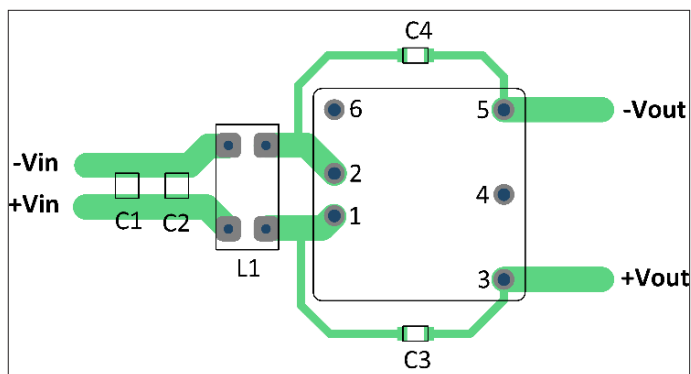
THL 15WI series meet EN 55032 Conducted Emissions Class A without external components.

Suggested filter to comply with EN 55032 Radiated Emissions Class A limits

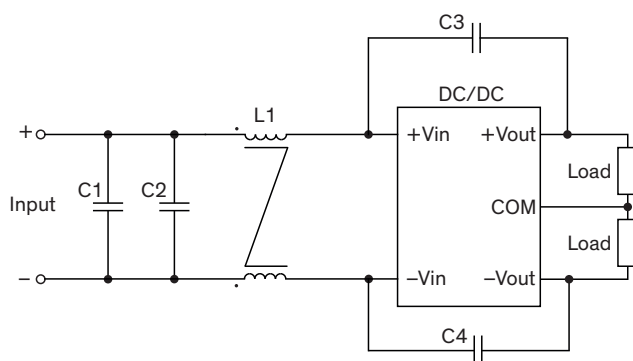
Single output models



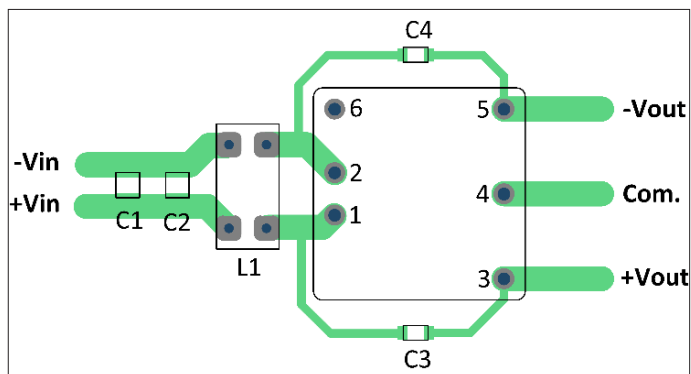
PCB layout suggestion



Dual output models



PCB layout suggestion



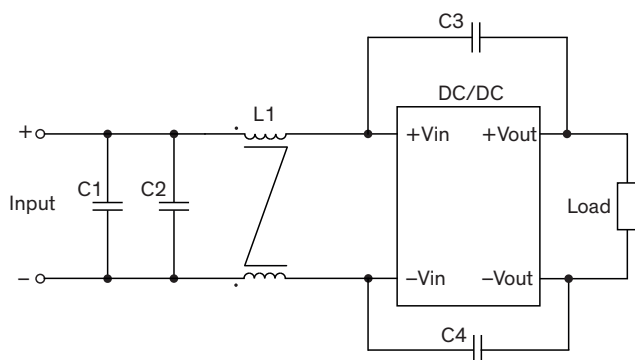
Suggested components to comply with EN 55032 Radiated Emissions Class A limits

Model	L1	C2, C2	C3, C4
THL 15-24xxWI	0.4 mH / 7448014501	4.7 μ F / 50 V / 1210 X7R MLCC	330 pF / 2 kV / 1206 X7R MLCC
THL 15-48xxWI		3.3 μ F / 100 V / 1210 X7S MLCC	

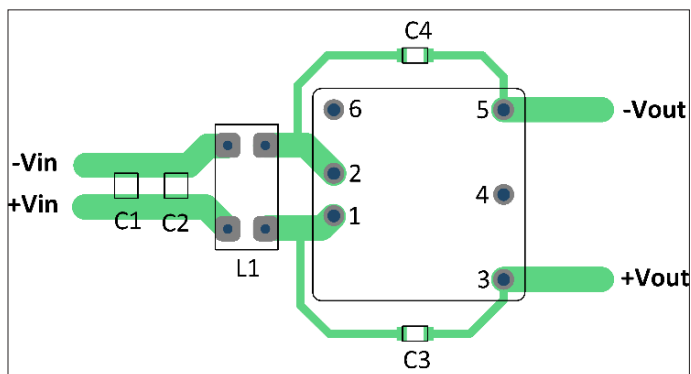
EMI Consideration

Suggested filter to comply with EN 55032 Radiated and Conducted Emissions Class B limits

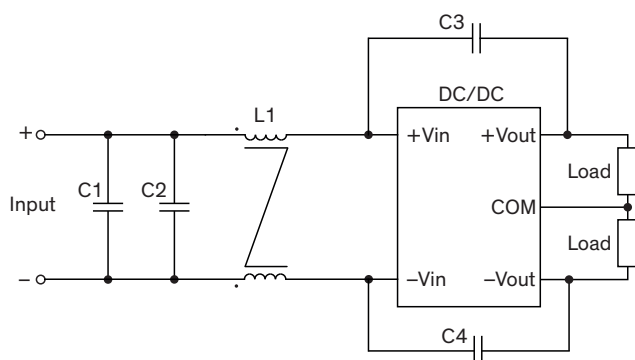
Single output models



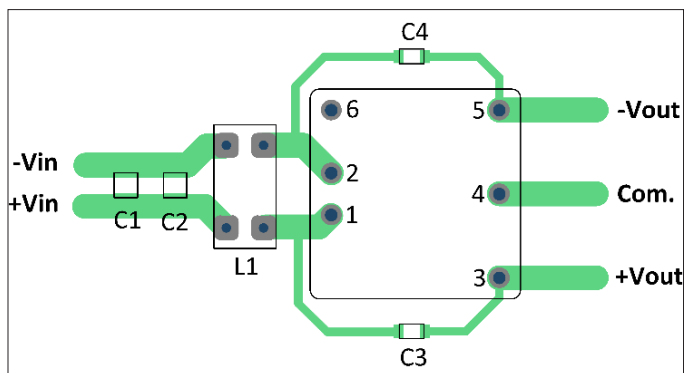
PCB layout suggestion



Dual output models



PCB layout suggestion



Suggested components to comply with EN 55032 Radiated and Conducted Emissions Class B limits

Model	L1	C1, C2	C3, C4
THL 15-24xxWI	0.5 mH / 7448013501	4.7 μ F / 50 V / 1210 X7R MLCC	330 pF / 2 kV / 1206 X7R MLCC
THL 15-48xxWI		3.3 μ F / 100 V / 1210 X7S MLCC	