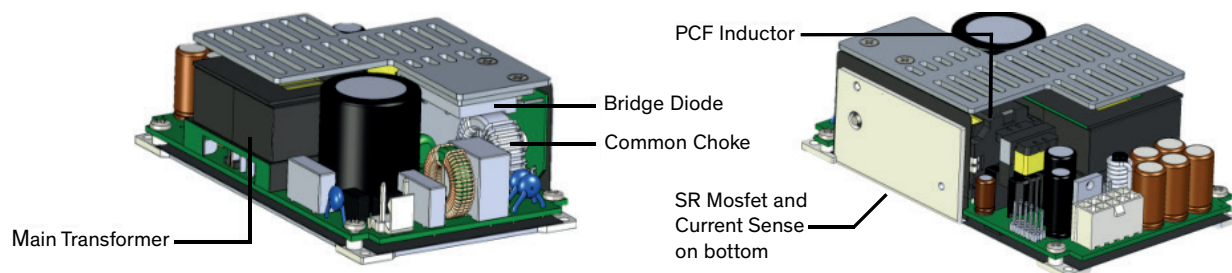


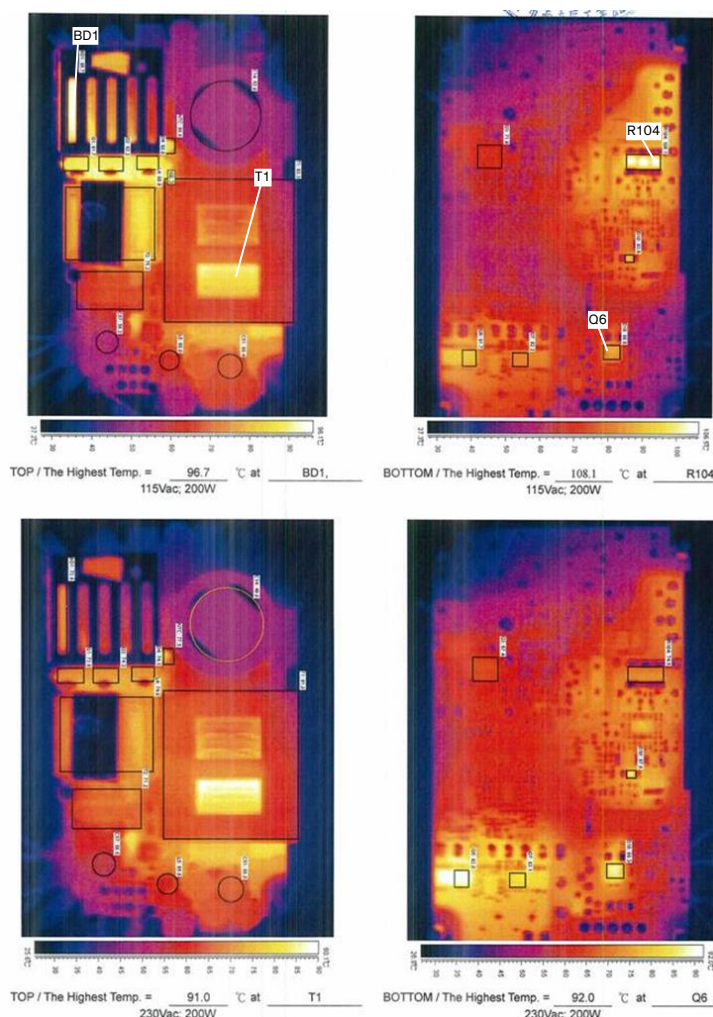
Thermal Consideration

Max. temperature of key components



Component	Bridge Diode (BD1)	Common Choke	PFC Inductor	Main Transformer (T1)	SR Mosfet (Q6)	Current Sense (R104)
Temp. limit	120°C	125°C	125°C	125°C	120°C	120°C

Thermal cam image for TPP 450A



Component	Vin = 115 VAC	Vin = 230 VAC
T1	93.3°C	91.0°C
R104	108.1°C	74.5°C
Q6	91.7°C	92.0°C
BD1	96.7°C	72.8°C

Max. measured temperature for key components

Temperature detection for key components

The same components (measurement points and temp. limits) are used for open-frame and encased version of TPP 450.

Note: The thermal considerations refer to the test setup (horizontal mounting) for certification.

Fan Characteristic

Fan Speed versus Sensor Temperature

