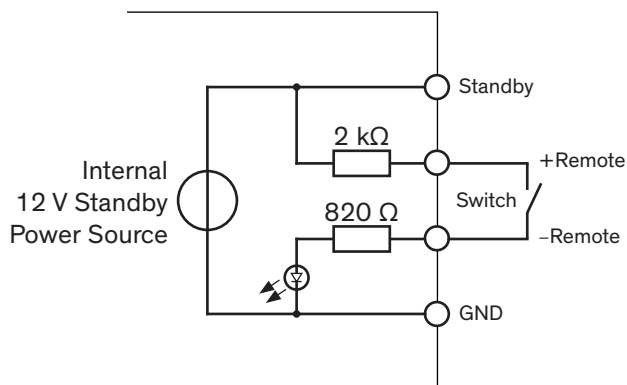


Remote Control

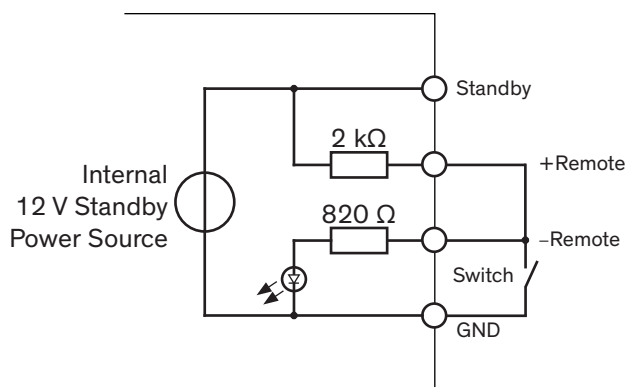
With the connector CN3 the power supply can be turned on and off by setting up a defined voltage level. Connection methods and circuit examples are shown below.

Using internal 12 V Standby Power Source:



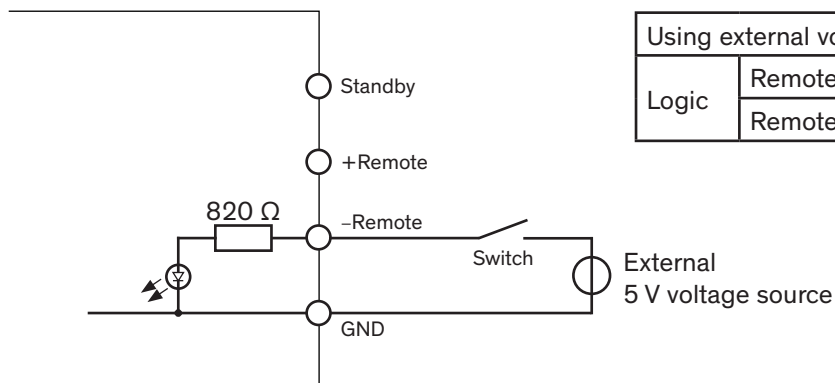
Using internal 12 V Standby Power Source		
Logic	Remote On	Switch open
	Remote Off	Switch closed

Using internal 12 V Standby Power Source (reverse logic):



Using internal 12 V Standby Power Source		
Logic	Remote On	Switch closed
	Remote Off	Switch open

Using external voltage source:



Using external voltage source		
Logic	Remote On	Switch open
	Remote Off	Switch closed