

Test Report

Report No.: CE200615C26 R1

Test Model: TEL 12-1211, TEL 12-2411, TEL 12-4811, TEL 12-1223, TEL 12-2423,
TEL 12-2411WI, TEL 12-2412WI, TEL 12-4811WI, TEL 12-2423WI,
TEL 12-4823WI

Series Model: *Multiple listing see item 3.1*

Received Date: Apr. 17, 2020

Test Date: Apr. 29 to Jul. 2, 2020

Issued Date: Aug. 26, 2021

Applicant: TRACO ELECTRONIC AG

Address: SIHLBRUGGSTRASSE 111 CH-6340 BAAR, SWITZERLAND

Issued By: Bureau Veritas Consumer Products Services (H.K.) Ltd., Taoyuan Branch
Lin Kou Laboratories

Lab Address: No. 47-2, 14th Ling, Chia Pau Vil., Lin Kou Dist., New Taipei City, Taiwan

Test Location (1): No. 47-2, 14th Ling, Chia Pau Vil., Lin Kou Dist., New Taipei City, Taiwan

Test Location (2): No. 49, Lane 206, Wende Rd., Chiung Lin Township, Hsinchu County, Taiwan



Certificate #4327.01

This report is for your exclusive use. Any copying or replication of this report to or for any other person or entity, or use of our name or trademark, is permitted only with our prior written permission. This report sets forth our findings solely with respect to the test samples identified herein. The results set forth in this report are not indicative or representative of the quality or characteristics of the lot from which a test sample was taken or any similar or identical product unless specifically and expressly noted. Our report includes all of the tests requested by you and the results thereof based upon the information that you provided to us. You have 60 days from date of issuance of this report to notify us of any material error or omission caused by our negligence, provided, however, that such notice shall be in writing and shall specifically address the issue you wish to raise. A failure to raise such issue within the prescribed time shall constitute your unqualified acceptance of the completeness of this report, the tests conducted and the correctness of the report contents. Unless specific mention, the uncertainty of measurement has been explicitly taken into account to declare the compliance or non-compliance to the specification. This report should not be used by the client to claim any endorsement by TAF and A2LA.

Table of Contents

Release Control Record	4
1 Certificate of Conformity	5
2 Summary of Test Results	6
2.1 Measurement Uncertainty	8
2.2 Modification Record.....	8
3 General Information	9
3.1 Description of EUT	9
3.2 Features of EUT	10
3.3 Operating Modes of EUT and Determination of Worst Case Operating Mode	11
3.4 Test Program Used and Operation Descriptions.....	12
3.5 Primary Clock Frequencies of Internal Source	12
3.6 Package Specifications by Manufacturer	13
4 Configuration and Connections with EUT	15
4.1 Connection Diagram of EUT and Peripheral Devices.....	15
4.2 Configuration of Peripheral Devices and Cable Connections	17
5 Conducted Emission from the Mains Power Port	18
5.1 Limits	18
5.2 Test Instruments	18
5.3 Test Arrangement	19
5.4 Test Results	20
6 Radiated Emission at Frequencies up to 1GHz <with external components according to total solution (3.6)>	40
6.1 Limits	40
6.2 Test Instruments	41
6.3 Test Arrangement	42
6.4 Test Results	43
7 General Immunity Requirements	63
7.1 Specific Immunity Requirements by Manufacturer.....	65
7.2 Performance Criteria	65
8 Electrostatic Discharge Immunity Test (ESD)	66
8.1 Test Specification.....	66
8.2 Test Instruments	66
8.3 Test Arrangement	66
8.4 Supplementary Information	68
8.5 Test Results	69
9 Radiated, Radio-frequency, Electromagnetic Field Immunity Test (RS)	71
9.1 Test Specification.....	71
9.2 Test Instruments	72
9.3 Test Arrangement	73
9.4 Supplementary Information	73
9.5 Test Results	74
10 Electrical Fast Transient/Burst Immunity Test (EFT) <with external components according to total solution (3.6)>	75
10.1 Test Specification.....	75
10.2 Test Instruments	75
10.3 Test Arrangement	76

10.4	Supplementary Information	76
10.5	Test Results	77
11	Surge Immunity Test <with external components according to total solution (3.6)>	78
11.1	Test Specification.....	78
11.2	Test Instruments	79
11.3	Test Arrangement	80
11.4	Supplementary Information	81
11.5	Test Results	82
12	Immunity to Conducted Disturbances Induced by RF Fields (CS)	83
12.1	Test Specification.....	83
12.2	Test Instruments	84
12.3	Test Arrangement	85
12.4	Supplementary Information	85
12.5	Test Results	86
13	Power Frequency Magnetic Field Immunity Test.....	87
13.1	Test Specification.....	87
13.2	Test Instruments	87
13.3	Test Arrangement	88
13.4	Supplementary Information	88
13.5	Test Results	89
14	Pictures of Test Arrangements	90
14.1	Conducted Emission from the Mains Power Port	90
14.2	Radiated Emission at Frequencies up to 1GHz	91
14.3	Electrostatic Discharge Immunity Test (ESD)	92
14.4	Radio-frequency, Electromagnetic Field Immunity Test (RS).....	93
14.5	Electrical Fast Transient/Burst Immunity Test (EFT)	94
14.6	Surge Immunity Test.....	94
14.7	Conducted Disturbances Induced by RF Fields (CS)	95
14.8	Power Frequency Magnetic Field Immunity Test (PFMF)	96
Appendix – Information of the Testing Laboratories		97

Release Control Record

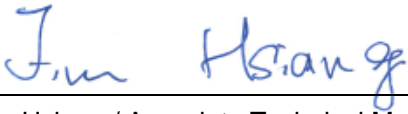
Issue No.	Description	Date Issued
CE200615C26	Original release.	Jul. 6, 2020
CE200615C26 R1	Modify RS test data of EN 55024 <20V/m test distance (from 3m to 1.5m)>	Aug. 26, 2021

1 Certificate of Conformity

Product: DC to DC Converter
Brand: TRACO
Test Model: TEL 12-1211, TEL 12-2411, TEL 12-4811, TEL 12-1223, TEL 12-2423,
TEL 12-2411WI, TEL 12-2412WI, TEL 12-4811WI, TEL 12-2423WI, TEL 12-4823WI
Series Model: *Multiple listing see item 3.1*
Sample Status: Engineering sample
Applicant: TRACO ELECTRONIC AG
Test Date: Apr. 29 to Jul. 2, 2020
Standards: **EN 55032:2015 +AC:2016, Class A**
EN 61000-3-2:2014 (Not applicable)
EN 61000-3-3:2013 (Not applicable)
EN 55024:2010 / EN 55024:2010 +A1:2015
EN 61000-4-2:2009 / IEC 61000-4-2:2008 ED. 2.0
EN 61000-4-3:2006 +A1:2008 +A2:2010 / IEC 61000-4-3:2010 ED. 3.2
EN 61000-4-4:2012 / IEC 61000-4-4:2012 ED. 3.0
EN 61000-4-5:2014 +A1:2017 / IEC 61000-4-5:2014 +A1:2017 ED. 3.0
EN 61000-4-6:2014 +AC:2015 / IEC 61000-4-6:2013 ED. 4.0
EN 61000-4-8:2010 / IEC 61000-4-8:2009 ED. 2.0
EN 61000-4-11:2004 +A1:2017 / IEC 61000-4-11:2004 +A1:2017 ED. 2.0 (Not applicable)
EN 55035:2017
EN 61000-4-2:2009 / IEC 61000-4-2:2008 ED. 2.0
EN 61000-4-3:2006 +A1:2008 +A2:2010 / IEC 61000-4-3:2010 ED. 3.2
EN 61000-4-4:2012 / IEC 61000-4-4:2012 ED. 3.0
EN 61000-4-5:2014 +A1:2017 / IEC 61000-4-5:2014 +A1:2017 ED. 3.0
EN 61000-4-6:2014 +AC:2015 / IEC 61000-4-6:2013 ED. 4.0
EN 61000-4-8:2010 / IEC 61000-4-8:2009 ED. 2.0
EN 61000-4-11:2004 +A1:2017 / IEC 61000-4-11:2004 +A1:2017 ED. 2.0 (Not applicable)
Broadband impulse noise disturbances (Not applicable)

The above equipment has been tested by **Bureau Veritas Consumer Products Services (H.K.) Ltd., Taoyuan Branch**, and found compliance with the requirement of the above standards. The test record, data evaluation & Equipment Under Test (EUT) configurations represented herein are true and accurate accounts of the measurements of the sample's EMC characteristics under the conditions specified in this report

Prepared by :  , **Date:** Aug. 26, 2021
Vivian Chen / Senior Specialist

Approved by :  , **Date:** Aug. 26, 2021
Jim Hsiang / Associate Technical Manager

2 Summary of Test Results

Emission			
Standard	Test Item	Result/Remarks	Verdict
EN 55032:2015 +AC:2016	Conducted emission from the AC mains power port	Minimum passing Class B margin is -1.10 dB at 0.48203 MHz	Pass
	Asymmetric mode conducted emission at telecommunication ports	Without telecom port of the EUT.	N/A
	Radiated emission 30-1000 MHz	Minimum passing Class B margin is -1.45 dB at 150.89 MHz	Pass
	Radiated emission above 1GHz	Not applicable because the EUT's highest frequency is below 108MHz.	N/A
	Conducted differential voltage emissions	Without tuner port of the EUT.	N/A
EN 61000-3-2:2014	Harmonic current emissions	Test not applicable because port does not exist.	N/A
EN 61000-3-3:2013	Voltage fluctuations and flicker	Test not applicable because port does not exist.	N/A

Immunity				
EN 55024 Clause	Basic standard	Test Item	Result/Remarks	Verdict
4.2.1	EN 61000-4-2:2009 / IEC 61000-4-2:2008 ED. 2.0	Electrostatic discharge (ESD)	Performance Criterion A	Pass
4.2.3.2	EN 61000-4-3:2006 +A1:2008 +A2:2010 / IEC 61000-4-3:2010 ED. 3.2	Continuous radiated disturbances (RS)	Performance Criterion A	Pass
4.2.2	EN 61000-4-4:2012 / IEC 61000-4-4:2012 ED. 3.0	Electrical fast transients (EFT)	Performance Criterion A	Pass
4.2.5	EN 61000-4-5:2014 +A1:2017 / IEC 61000-4-5:2014 +A1:2017 ED. 3.0	Surges	Performance Criterion A	Pass
4.2.3.3	EN 61000-4-6:2014 +AC:2015 / IEC 61000-4-6:2013 ED. 4.0	Continuous conducted disturbances (CS)	Performance Criterion A	Pass
4.2.4	EN 61000-4-8:2010 / IEC 61000-4-8:2009 ED. 2.0	Power-frequency magnetic fields (PFMF)	Performance Criterion A	Pass
4.2.6	EN 61000-4-11:2004 +A1:2017 / IEC 61000-4-11:2004 +A1:2017 ED. 2.0	Voltage dips and interruptions	Test not applicable because AC power port does not exist.	N/A

Immunity				
EN 55035 Clause	Basic standard	Test Item	Result/Remarks	Verdict
4.2.1	EN 61000-4-2:2009 / IEC 61000-4-2:2008 ED. 2.0	Electrostatic discharge (ESD)	Performance Criterion A	Pass
4.2.2.2	EN 61000-4-3:2006 +A1:2008 +A2:2010 / IEC 61000-4-3:2010 ED. 3.2	Continuous radiated disturbances (RS)	Performance Criterion A	Pass
4.2.4	EN 61000-4-4:2012 / IEC 61000-4-4:2012 ED. 3.0	Electrical fast transients (EFT)	Performance Criterion A	Pass
4.2.5	EN 61000-4-5:2014 +A1:2017 / IEC 61000-4-5:2014 +A1:2017 ED. 3.0	Surges	Performance Criterion A	Pass
4.2.2.3	EN 61000-4-6:2014 +AC:2015 / IEC 61000-4-6:2013 ED. 4.0	Continuous conducted disturbances (CS)	Performance Criterion A	Pass
4.2.3	EN 61000-4-8:2010 / IEC 61000-4-8:2009 ED. 2.0	Power-frequency magnetic fields (PFMF)	Performance Criterion A	Pass
4.2.6	EN 61000-4-11:2004 +A1:2017 / IEC 61000-4-11:2004 +A1:2017 ED. 2.0	Voltage dips and interruptions	Test not applicable because AC power port does not exist.	N/A
4.2.7	-	Broadband impulse noise disturbances, Repetitive (Applicable only to xDSL ports.)	Without CPE xDSL port of the EUT.	N/A
4.2.7	-	Broadband impulse noise disturbances, Isolated (Applicable only to xDSL ports.)	Without CPE xDSL port of the EUT.	N/A

Note:

1. There is no deviation to the applied test methods and requirements covered by the scope of this report.
2. Determining compliance based on the results of the compliance measurement, not taking into account measurement instrumentation uncertainty.
3. The above EN/IEC basic standards are applied with latest version if customer has no special requirement.
4. N/A: Not Applicable.

2.1 Measurement Uncertainty

Where relevant, the following measurement uncertainty levels have been estimated for tests performed on the EUT as specified in CISPR 16-4-2:

Measurement	Expanded Uncertainty (k=2) (\pm)	Maximum allowable uncertainty (\pm)
Conducted disturbance at mains port using AMN, 150kHz ~ 30MHz	3.00 dB	3.4 dB (U_{CISPR})
Radiated disturbance, 30MHz ~ 1GHz	3.97 dB	6.3 dB (U_{CISPR})

The other instruments specified are routine verified to remain within the calibrated levels, no measurement uncertainty is required to be calculated.

2.2 Modification Record

There were no modifications required for compliance.

3 General Information

3.1 Description of EUT

Product	DC to DC Converter
Brand	TRACO
Test Model	TEL 12-1211, TEL 12-2411, TEL 12-4811, TEL 12-1223, TEL 12-2423, TEL 12-2411WI, TEL 12-2412WI, TEL 12-4811WI, TEL 12-2423WI, TEL 12-4823WI
Series Model	Multiple listing see below
Model Difference	Refer to note as below
Sample Status	Engineering sample
Operating Software	N/A
Power Supply Rating	Refer to note as below
Accessory Device	N/A
Data Cable Supplied	N/A

Note:

1. This report is issued as a duplicate report of BV CPS report no.: 200417C11 R2. The difference compared with original report are changing applicant, brand and models for marketing purpose; therefore all test data was copied from the original test report.
2. The EUT is a DC to DC Converter, the specifications of standard models were listed as below:

Model Number	Input Voltage (Range)	Output Voltage
	VDC	VDC
TEL 12-1211-B1	12 (9 ~ 18)	5
TEL 12-1211		5.1
TEL 12-1212		12
TEL 12-1213		15
TEL 12-1215		24
TEL 12-1222		±12
TEL 12-1223		±15
TEL 12-2411-B1	24 (18 ~ 36)	5
TEL 12-2411		5.1
TEL 12-2412		12
TEL 12-2413		15
TEL 12-2415		24
TEL 12-2422		±12
TEL 12-2423		±15
TEL 12-4811-B1	48 (36 ~ 75)	5
TEL 12-4811		5.1
TEL 12-4812		12
TEL 12-4813		15
TEL 12-4815		24
TEL 12-4822		±12
TEL 12-4823		±15

Model Number	Input Voltage (Range)	Output Voltage
	VDC	VDC
TEL 12-2411WI-B1	24 (18 ~ 36)	5
TEL 12-2411WI		5.1
TEL 12-2412WI		12
TEL 12-2413WI		15
TEL 12-2415WI		24
TEL 12-2422WI		±12
TEL 12-2423WI		±15
TEL 12-4811WI-B1	48 (36 ~ 75)	5
TEL 12-4811WI		5.1
TEL 12-4812WI		12
TEL 12-4813WI		15
TEL 12-4815WI		24
TEL 12-4822WI		±12
TEL 12-4823WI		±15

During the test, the **Model No.:** TEL 12-1211, TEL 12-2411, TEL 12-4811, TEL 12-1223, TEL 12-2423, TEL 12-2411WI, TEL 12-2412WI, TEL 12-4811WI, TEL 12-2423WI, TEL 12-4823WI were selected as the representative models for the test and therefore only their test data were recorded in this report.

3.2 Features of EUT

The tests reported herein were performed according to the method specified by TRACO ELECTRONIC AG, for detailed feature description, please refer to the manufacturer's specifications or user's manual.

3.3 Operating Modes of EUT and Determination of Worst Case Operating Mode

1. The EUT was pre-tested under operating and standby condition and the worst emission level was found under **operating condition**.
2. As client's requirement, test modes are presented in the report as below.

Mode	Model No.	Input Voltage	Output Voltage	Test Condition
Conducted emission test				
1	TEL 12-1211	12Vdc	5.1	Full Load without Solution Fixed Board
2	TEL 12-2411	24Vdc	5.1	
3	TEL 12-4811	48Vdc	5.1	
4	TEL 12-1223	12Vdc	15	
5	TEL 12-2423	24Vdc	15	
6	TEL 12-2411WI	24Vdc	5.1	
7	TEL 12-2412WI	24Vdc	12	
8	TEL 12-4811WI	48Vdc	5.1	
9	TEL 12-2423WI	24Vdc	15	
10	TEL 12-4823WI	48Vdc	15	
Radiated emission, EFT & Surge tests				
1	TEL 12-1211	12Vdc	5.1	Full Load with Solution Fixed Board
2	TEL 12-2411	24Vdc	5.1	
3	TEL 12-4811	48Vdc	5.1	
4	TEL 12-1223	12Vdc	15	
5	TEL 12-2423	24Vdc	15	
6	TEL 12-2411WI	24Vdc	5.1	
7	TEL 12-2412WI	24Vdc	12	
8	TEL 12-4811WI	48Vdc	5.1	
9	TEL 12-2423WI	24Vdc	15	
10	TEL 12-4823WI	48Vdc	15	
ESD, RS, CS, Magnetic tests				
1	TEL 12-4811WI	48Vdc	5.1	Full Load without Solution Fixed Board
2	TEL 12-4811	48Vdc	5.1	

3.4 Test Program Used and Operation Descriptions

◆ **For Conducted & Radiated tests:**

Set the EUT under full load.

◆ **For Immunity tests:**

Connected a resistor load to DC output port of EUT to make EUT have maximum power consumption and a multimeter was used to monitor voltage of output.

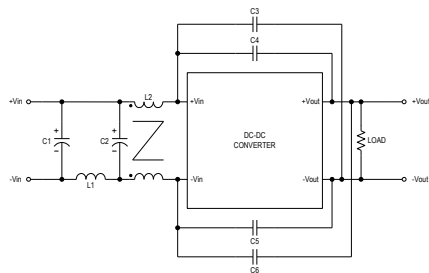
3.5 Primary Clock Frequencies of Internal Source

The highest frequency generated or used within the EUT or on which the EUT operates or tunes is 480kHz, provided by TRACO ELECTRONIC AG, for detailed internal source, please refer to the manufacturer's specifications.

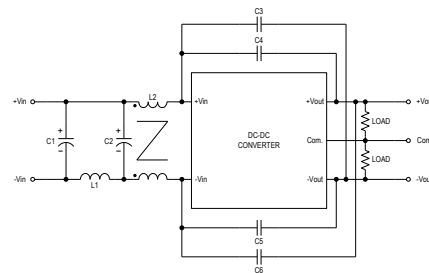
3.6 Package Specifications by Manufacturer

(1) EMC Solution :

External Filter meets Total solution (for EFT & Surge & Radiation) EN 55032, class A



Single Output

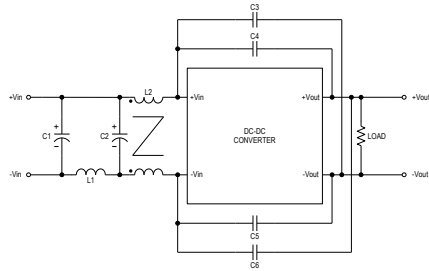


Dual Output

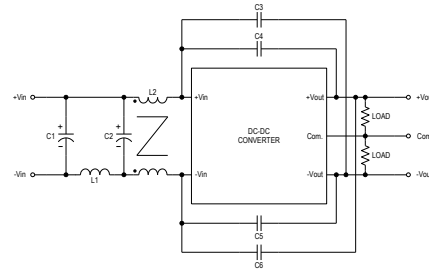
Model	C1, C2	L1	L2	C3, C6	C4, C5
TEL 12-1211-B1, TEL 12-1211, TEL 12-1212, TEL 12-1213, TEL 12-1215	560µF/50V CHEMI-CON KY Series	10µH/2.2A/100mΩ 74477410	---	---	1000pF/2kV 1808 X7R
TEL 12-1222, TEL 12-1223	560µF/50V CHEMI-CON KY Series	10µH/2.2A/100mΩ 74477410	---	---	1000pF/2kV 1808 X7R
TEL 12-2411-B1, TEL 12-2411, TEL 12-2412, TEL 12-2413, TEL 12-2415	470µF/50V CHEMI-CON KY Series	10µH/2.2A/100mΩ 74477410	---	---	1000pF/2kV 1808 X7R
TEL 12-2422, TEL 12-2423	470µF/50V CHEMI-CON KY Series	10µH/2.2A/100mΩ 74477410	---	---	1000pF/2kV 1808 X7R

Model	C1, C2	L1	L2	C3, C4	C5, C6
TEL 12-4811-B1, TEL 12-4811, TEL 12-4812, TEL 12-4813, TEL 12-4815	150µF/50V CHEMI-CON KY Series	56µH/770mA/420mΩ 744774156	30µH/1.4A/40mΩ 744273222	1000pF/2kV 1808 X7R	680pF/2kV 1808 X7R
TEL 12-4822, TEL 12-4823	150µF/50V CHEMI-CON KY Series	56µH/770mA/420mΩ 744774156	30µH/1.4A/40mΩ 744273222	100pF/2kV 1808 X7R	680pF/2kV 1808 X7R

External Filter meets Total solution (for EFT & Surge & Radiation) EN 55032, class A



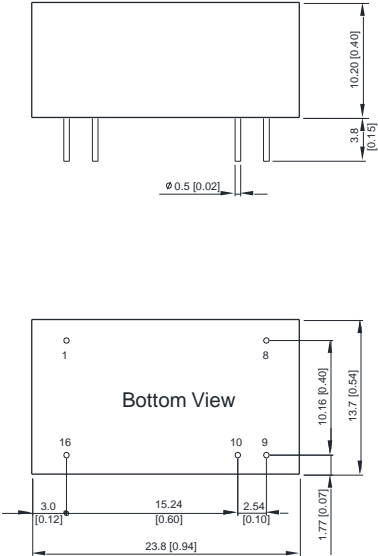
Single Output



Dual Output

Model	C1, C2	L1	L2	C3	C4	C5	C6
TEL 12-2411WI-B1, TEL 12-2411WI, TEL 12-2412WI, TEL 12-2413WI, TEL 12-2415WI, TEL 12-2422WI, TEL 12-2423WI	470µF/50V CHEMI-CON KY Series	10µH/2.2A/ 78mΩ 74477410	---	---	1000pF/2kV 1808 X7R	1000pF/2kV 1808 X7R	---
TEL 12-4811WI-B1, TEL 12-4811WI, TEL 12-4812WI, TEL 12-4813WI, TEL 12-4815WI, TEL 12-4822WI, TEL 12-4823WI	150µF/100V CHEMI-CON KY Series	56µH/0.77A/ 298mΩ 744774156	744273222	1000pF/2kV 1808 X7R	680pF/2kV 1808 X7R	1000pF/2kV 1808 X7R	680pF/2kV 1808 X7R

(2) Package Specifications :

Package Specifications		
Mechanical Dimensions	Pin Connections	
 <p>The top view shows a rectangular package with dimensions 23.8 mm (0.94 inches) by 13.7 mm (0.54 inches). The height is 10.2 mm (0.40 inches). The pin pitch is 2.54 mm (0.10 inches). The pin diameter is 0.5 mm (0.02 inches). The bottom view shows the pin locations with dimensions 3.0 mm (0.12 inches) for the distance from the left edge to pin 16, 15.24 mm (0.60 inches) for the distance between pins 16 and 10, and 2.54 mm (0.10 inches) for the distance between pins 10 and 9. The distance from the bottom edge to the pin row is 1.77 mm (0.07 inches). The distance from the right edge to pin 8 is 10.16 mm (0.40 inches). The distance from the right edge to pin 9 is 13.7 mm (0.54 inches).</p>	Pin	Single Output
	Pin	Dual Output
	1	-Vin
	8	NC
	9	+Vout
	10	-Vout
	16	+Vin

NC: No Connection

- ▶ All dimensions in mm (inches)
- ▶ Tolerance: $X.X \pm 0.5$ ($X.XX \pm 0.02$)
 $X.XX \pm 0.25$ ($X.XXX \pm 0.01$)
- ▶ Pin diameter $\Leftrightarrow 0.5 \pm 0.05$ (0.02 ± 0.002)

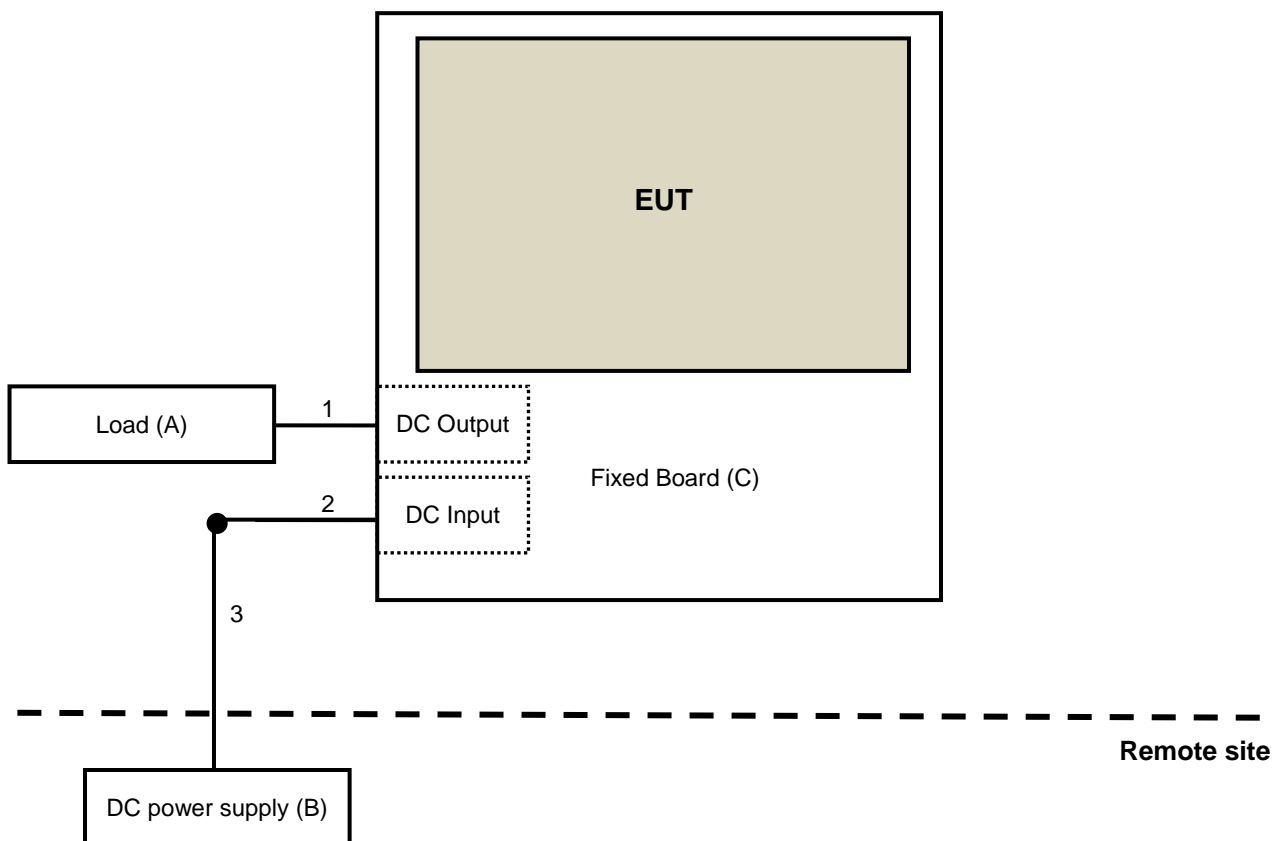
Physical Characteristics

Case Size	: 23.8x13.7x10.2 mm (0.94x0.54x0.40 inches)
Case Material	: Aluminium Alloy, Black Anodized Coating
Pin Material	: Tinned Copper
Weight	: 8.7g

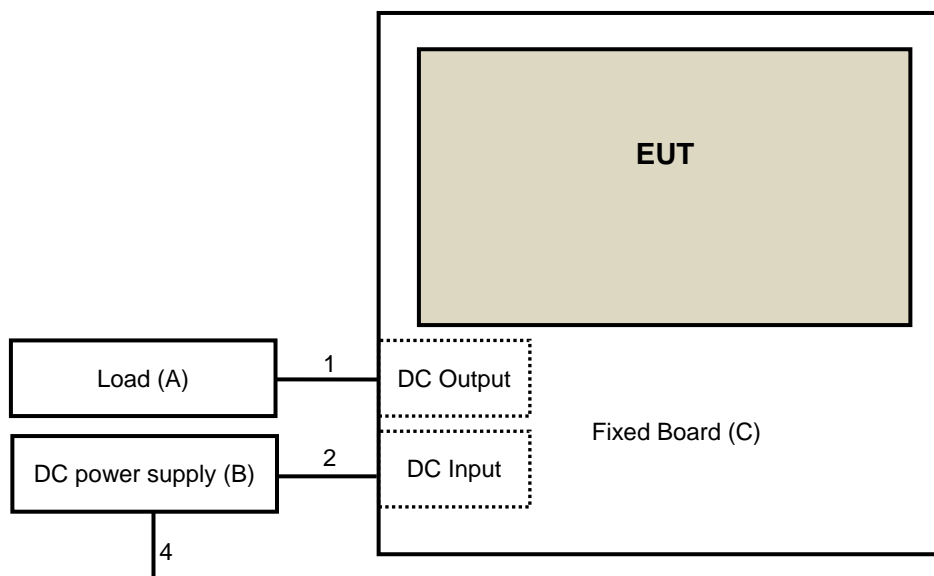
4 Configuration and Connections with EUT

4.1 Connection Diagram of EUT and Peripheral Devices

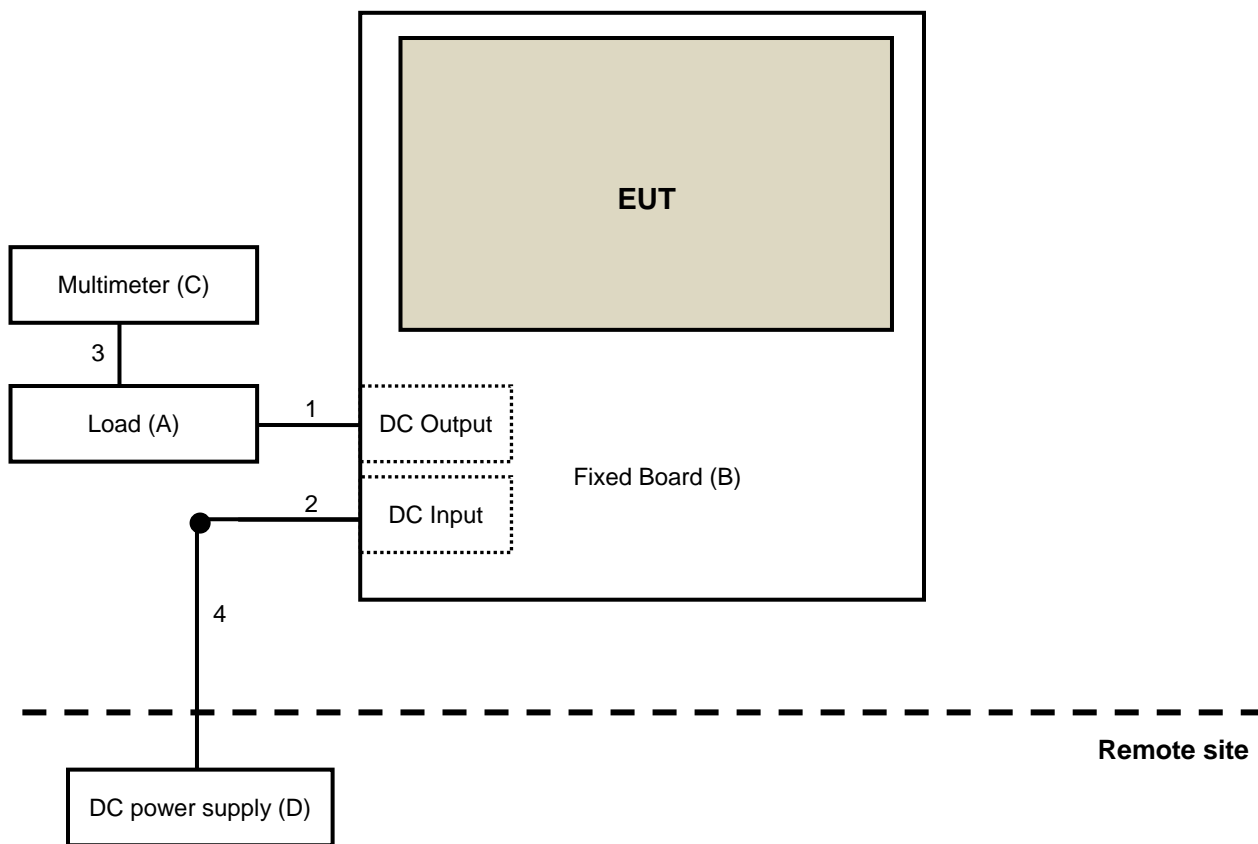
Conducted test:



Radiated test:



Immunity tests:



4.2 Configuration of Peripheral Devices and Cable Connections

Emission tests:

ID	Product	Brand	Model No.	Serial No.	FCC ID	Remarks
A.	Load	N/A	N/A	N/A	N/A	Supplied by client
B.	DC Power Supply	GWINSTEK	GPC-6030D	N/A	N/A	Supplied by client
C.	Fixed Board	N/A	N/A	N/A	N/A	Supplied by client

Note: All power cords of the above support units are non-shielded (1.8m).

ID	Cable Descriptions	Qty.	Length (m)	Shielding (Yes/No)	Cores (Qty.)	Remarks
1.	DC power cable	1	0.03	N	0	Supplied by client
2.	DC power cable	1	0.3	N	0	Supplied by client
3.	DC power cable	1	10	N	0	Provided by Lab
4.	AC power cable	1	1.8	N	0	Provided by Lab

Note: The core(s) is(are) originally attached to the cable(s).

Immunity tests:

ID	Product	Brand	Model No.	Serial No.	FCC ID	Remarks
A.	Load	N/A	N/A	N/A	N/A	Supplied by client
B.	Fixed Board	N/A	N/A	N/A	N/A	Supplied by client
C.	Multimeter	YFE	YF-370A	N/A	N/A	Provided by Lab
D.	DC Power Supply	CHROMA	62150H-600S	62150EC00672	N/A	Supplied by client

Note: All power cords of the above support units are non-shielded (1.8m).

ID	Descriptions	Qty.	Length (m)	Shielding (Yes/No)	Cores (Qty.)	Remarks
1.	DC power cable	1	0.03	N	0	Supplied by client
2.	DC power cable	1	0.3	N	0	Supplied by client
3.	Data cable	1	0.8	N	0	Provided by Lab
4.	DC power cable	1	10	N	0	Provided by Lab

Note: The core(s) is(are) originally attached to the cable(s).

5 Conducted Emission from the Mains Power Port

5.1 Limits

Class A			
Frequency range (MHz)	Coupling device	Detector type / bandwidth	Limits (dBuV)
0.15 - 0.5	AMN	Quasi-peak / 9kHz	79
0.5 - 30.0			73
0.15 - 0.5		Average / 9kHz	66
0.5 - 30.0			60
Class B			
Frequency range (MHz)	Coupling device	Detector type / bandwidth	Limits (dBuV)
0.15 - 0.5	AMN	Quasi-peak / 9kHz	66 - 56
0.5 - 5			56
5 - 30.0			60
0.15 - 0.5		Average / 9kHz	56 - 46
0.5 - 5			46
5 - 30.0			50

Notes: 1. The lower limit shall apply at the transition frequencies.

2. The limit decreases linearly with the logarithm of the frequency in the range of 0.15 to 0.50 MHz.

5.2 Test Instruments

Description & Manufacturer	Model No.	Serial No.	Cal. Date	Cal. Due
ROHDE & SCHWARZ TEST RECEIVER	ESCS30	100276	Apr. 16, 2020	Apr. 15, 2021
SCHWARZBECK Artificial Mains Network (for EUT)	NSLK 8128	8128-244	Nov. 11, 2019	Nov. 10, 2020
LISN With Adapter (for EUT)	AD10	C05Ada-001	Nov. 11, 2019	Nov. 10, 2020
ROHDE & SCHWARZ Artificial Mains Network (for peripheral)	ESH3-Z5	100220	Nov. 18, 2019	Nov. 17, 2020
Software	Cond_V7.3.7.4	NA	NA	NA
RF cable (JYEBAO) With 10dB PAD	5D-FB	Cable-C05.01	Jan. 30, 2020	Jan. 29, 2021
LYNICS Terminator (For R&S LISN)	0900510	E1-01-305	Feb. 17, 2020	Feb. 16, 2021

Note: 1. The calibration interval of the above test instruments is 12 months and the calibrations are traceable to NML/ROC and NIST/USA.

2. The test was performed in Shielded Room No. 5.

3. The VCCI Site Registration No. C-11093.

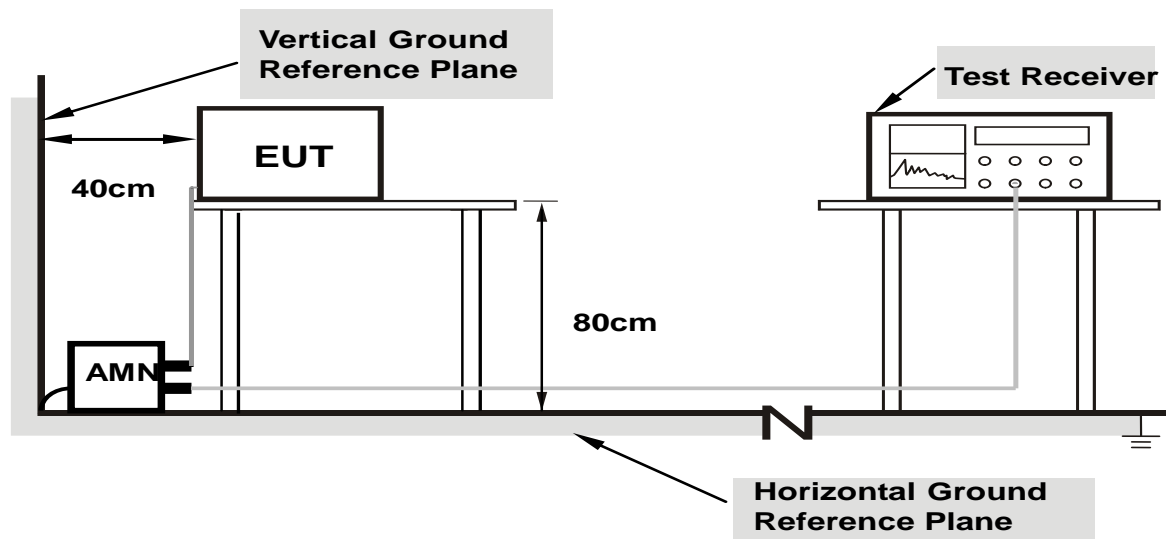
4. The Industry Canada Reference No. IC 3789-5.

5. Tested Date: May 8 to Jul. 2, 2020

5.3 Test Arrangement

- The EUT was placed 0.4 meters from the conducting wall of the shielded room with EUT being connected to the power mains through an Artificial Mains Network (AMN). Other support units were connected to the power mains through another AMN. The two AMNs provide 50 Ohm/ 50uH of coupling impedance for the measuring instrument.
- Both lines of the power mains connected to the EUT were checked for maximum conducted interference.
- The test results of conducted emissions at mains ports are recorded of six worst margins for quasi-peak (mandatory) [and average (if necessary)] values against the limits at frequencies of interest unless the margin is 20 dB or greater.

Note: The resolution bandwidth and video bandwidth of test receiver is 9kHz for quasi-peak detection (QP) and average detection (AV) at frequency 0.15MHz-30MHz.



- Note:**
1. Support units were connected to second AMN.
 2. The distance specified between EUT/AE and other metallic objects is ≥ 0.8 m in the measurement arrangement for table-top EUT.
 3. Cable on the RGP must to be insulated.

For the actual test configuration, please refer to the related item – Photographs of the Test Configuration.

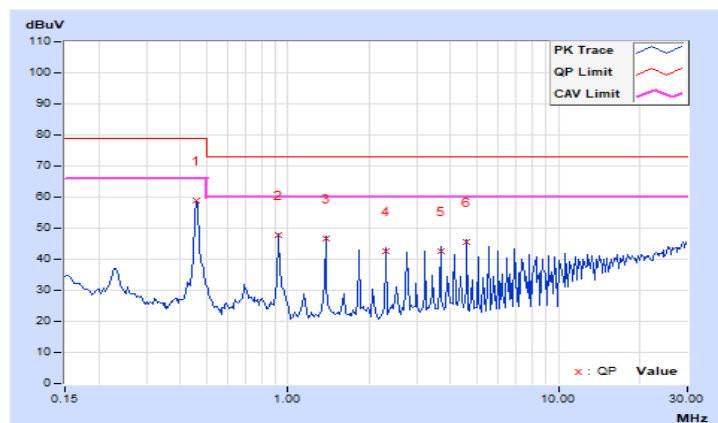
5.4 Test Results

Frequency Range	150kHz ~ 30MHz	Detector Function & Bandwidth	Quasi-Peak (QP) / Average (AV), 9kHz
Input Power	12Vdc	Environmental Conditions	26°C, 77%RH, 998mbar
Test Mode	Mode 1		
Tested by	Kobe Lu		

Phase Of Power : Positive (+)										
No	Frequency (MHz)	Correction Factor (dB)	Reading Value (dBuV)		Emission Level (dBuV)		Limit (dBuV)		Margin (dB)	
			Q.P.	AV.	Q.P.	AV.	Q.P.	AV.	Q.P.	AV.
1	0.46103	9.86	49.13	47.55	58.99	57.41	79.00	66.00	-20.01	-8.59
2	0.91953	9.89	37.74	32.78	47.63	42.67	73.00	60.00	-25.37	-17.33
3	1.37891	9.92	36.93	33.89	46.85	43.81	73.00	60.00	-26.15	-16.19
4	2.30078	9.95	32.69	27.84	42.64	37.79	73.00	60.00	-30.36	-22.21
5	3.67969	9.99	32.51	25.22	42.50	35.21	73.00	60.00	-30.50	-24.79
6	4.59774	10.02	35.50	27.04	45.52	37.06	73.00	60.00	-27.48	-22.94

Remarks:

1. Q.P. and AV. are abbreviations of quasi-peak and average individually.
2. The emission levels of other frequencies were very low against the limit.
3. Margin value = Emission level – Limit value
4. Correction factor = Insertion loss + Cable loss
5. Emission Level = Correction Factor + Reading Value

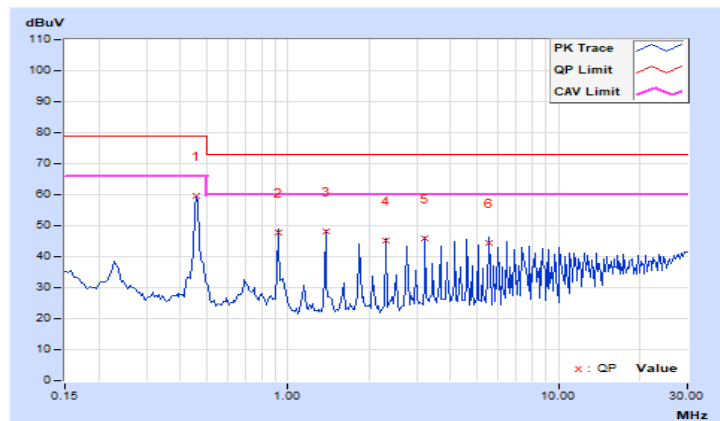


Frequency Range	150kHz ~ 30MHz	Detector Function & Bandwidth	Quasi-Peak (QP) / Average (AV), 9kHz
Input Power	12Vdc	Environmental Conditions	26°C, 77%RH, 998mbar
Test Mode	Mode 1		
Tested by	Kobe Lu		

Phase Of Power : Negative (-)										
No	Frequency (MHz)	Correction Factor (dB)	Reading Value (dBuV)		Emission Level (dBuV)		Limit (dBuV)		Margin (dB)	
			Q.P.	AV.	Q.P.	AV.	Q.P.	AV.	Q.P.	AV.
1	0.45987	9.87	49.69	48.22	59.56	58.09	79.00	66.00	-19.44	-7.91
2	0.91953	9.90	37.92	32.86	47.82	42.76	73.00	60.00	-25.18	-17.24
3	1.37891	9.92	38.07	35.10	47.99	45.02	73.00	60.00	-25.01	-14.98
4	2.29688	9.95	35.08	30.99	45.03	40.94	73.00	60.00	-27.97	-19.06
5	3.21570	9.98	35.81	29.97	45.79	39.95	73.00	60.00	-27.21	-20.05
6	5.51563	10.05	34.45	26.55	44.50	36.60	73.00	60.00	-28.50	-23.40

Remarks:

1. Q.P. and AV. are abbreviations of quasi-peak and average individually.
2. The emission levels of other frequencies were very low against the limit.
3. Margin value = Emission level – Limit value
4. Correction factor = Insertion loss + Cable loss
5. Emission Level = Correction Factor + Reading Value

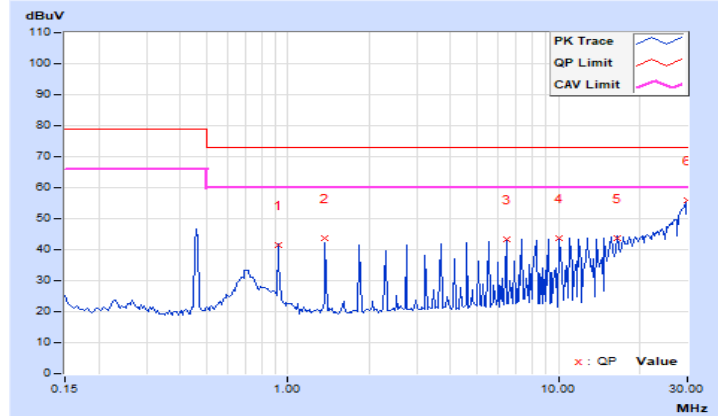


Frequency Range	150kHz ~ 30MHz	Detector Function & Bandwidth	Quasi-Peak (QP) / Average (AV), 9kHz
Input Power	24Vdc	Environmental Conditions	25°C, 78%RH, 1002mbar
Tested by	Kobe Lu		
Test Mode	Mode 2		

Phase Of Power : Positive (+)										
No	Frequency (MHz)	Correction Factor (dB)	Reading Value (dBuV)		Emission Level (dBuV)		Limit (dBuV)		Margin (dB)	
			Q.P.	AV.	Q.P.	AV.	Q.P.	AV.	Q.P.	AV.
1	0.91825	9.89	31.52	31.51	41.41	41.40	73.00	60.00	-31.59	-18.60
2	1.37500	9.92	33.68	33.55	43.60	43.47	73.00	60.00	-29.40	-16.53
3	6.41116	10.07	33.41	33.32	43.48	43.39	73.00	60.00	-29.52	-16.61
4	10.08739	10.18	33.39	33.28	43.57	43.46	73.00	60.00	-29.43	-16.54
5	16.48541	10.36	33.49	33.26	43.85	43.62	73.00	60.00	-29.15	-16.38
6	30.00000	10.52	45.26	45.08	55.78	55.60	73.00	60.00	-17.22	-4.40

Remarks:

1. Q.P. and AV. are abbreviations of quasi-peak and average individually.
2. The emission levels of other frequencies were very low against the limit.
3. Margin value = Emission level – Limit value
4. Correction factor = Insertion loss + Cable loss
5. Emission Level = Correction Factor + Reading Value

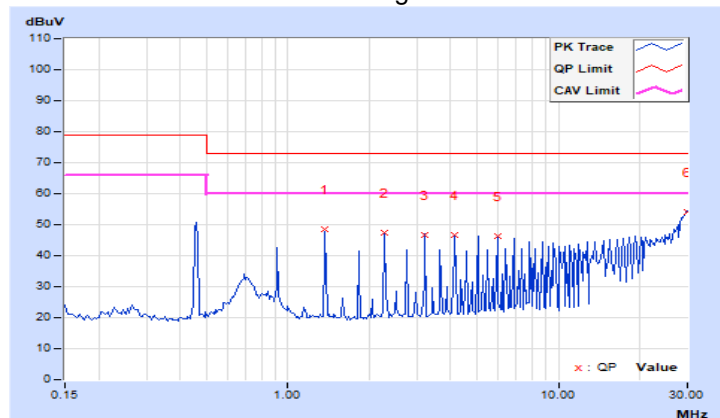


Frequency Range	150kHz ~ 30MHz	Detector Function & Bandwidth	Quasi-Peak (QP) / Average (AV), 9kHz
Input Power	24Vdc	Environmental Conditions	25°C, 78%RH, 1002mbar
Tested by	Kobe Lu		
Test Mode	Mode 2		

Phase Of Power : Negative (-)										
No	Frequency (MHz)	Correction Factor (dB)	Reading Value (dBuV)		Emission Level (dBuV)		Limit (dBuV)		Margin (dB)	
			Q.P.	AV.	Q.P.	AV.	Q.P.	AV.	Q.P.	AV.
1	1.37237	9.92	38.52	38.43	48.44	48.35	73.00	60.00	-24.56	-11.65
2	2.28778	9.95	37.44	37.41	47.39	47.36	73.00	60.00	-25.61	-12.64
3	3.20313	9.98	36.68	36.55	46.66	46.53	73.00	60.00	-26.34	-13.47
4	4.11719	10.01	36.53	36.42	46.54	46.43	73.00	60.00	-26.46	-13.57
5	5.94667	10.07	36.07	36.01	46.14	46.08	73.00	60.00	-26.86	-13.92
6	29.96675	10.54	43.48	43.24	54.02	53.78	73.00	60.00	-18.98	-6.22

Remarks:

1. Q.P. and AV. are abbreviations of quasi-peak and average individually.
2. The emission levels of other frequencies were very low against the limit.
3. Margin value = Emission level – Limit value
4. Correction factor = Insertion loss + Cable loss
5. Emission Level = Correction Factor + Reading Value

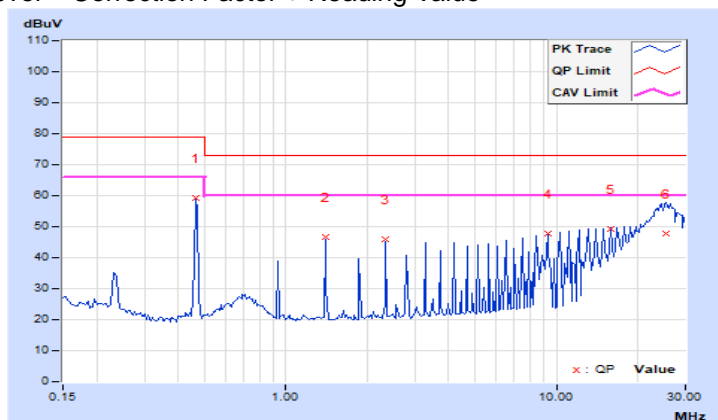


Frequency Range	150kHz ~ 30MHz	Detector Function & Bandwidth	Quasi-Peak (QP) / Average (AV), 9kHz
Input Power	48Vdc	Environmental Conditions	24°C, 73%RH, 999mbar
Tested by	Kobe Lu		
Test Mode	Mode 3		

Phase Of Power : Positive (+)										
No	Frequency (MHz)	Correction Factor (dB)	Reading Value (dBuV)		Emission Level (dBuV)		Limit (dBuV)		Margin (dB)	
			Q.P.	AV.	Q.P.	AV.	Q.P.	AV.	Q.P.	AV.
1	0.46641	9.86	49.58	49.49	59.44	59.35	79.00	66.00	-19.56	-6.65
2	1.39852	9.92	36.85	36.51	46.77	46.43	73.00	60.00	-26.23	-13.57
3	2.32544	9.95	36.10	36.06	46.05	46.01	73.00	60.00	-26.95	-13.99
4	9.30028	10.16	37.77	37.65	47.93	47.81	73.00	60.00	-25.07	-12.19
5	15.82078	10.35	38.87	38.10	49.22	48.45	73.00	60.00	-23.78	-11.55
6	25.36908	10.48	37.13	35.95	47.61	46.43	73.00	60.00	-25.39	-13.57

Remarks:

1. Q.P. and AV. are abbreviations of quasi-peak and average individually.
2. The emission levels of other frequencies were very low against the limit.
3. Margin value = Emission level – Limit value
4. Correction factor = Insertion loss + Cable loss
5. Emission Level = Correction Factor + Reading Value

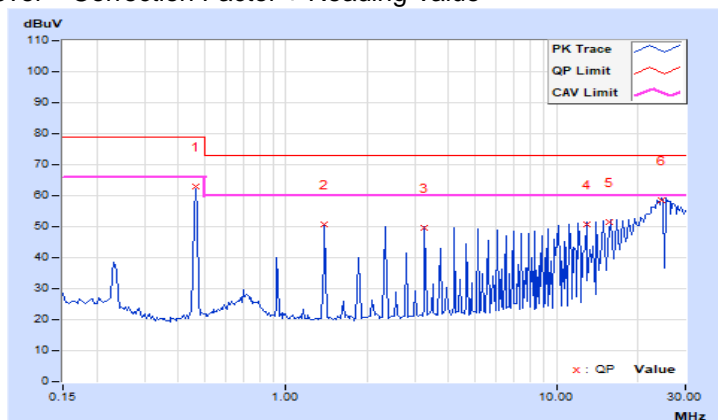


Frequency Range	150kHz ~ 30MHz	Detector Function & Bandwidth	Quasi-Peak (QP) / Average (AV), 9kHz
Input Power	48Vdc	Environmental Conditions	24°C, 73%RH, 999mbar
Tested by	Kobe Lu		
Test Mode	Mode 3		

Phase Of Power : Negative (-)										
No	Frequency (MHz)	Correction Factor (dB)	Reading Value (dBuV)		Emission Level (dBuV)		Limit (dBuV)		Margin (dB)	
			Q.P.	AV.	Q.P.	AV.	Q.P.	AV.	Q.P.	AV.
1	0.46513	9.87	53.01	52.98	62.88	62.85	79.00	66.00	-16.12	-3.15
2	1.39198	9.92	40.99	40.25	50.91	50.17	73.00	60.00	-22.09	-9.83
3	3.24627	9.98	39.53	39.49	49.51	49.47	73.00	60.00	-23.49	-10.53
4	12.98356	10.28	40.61	40.58	50.89	50.86	73.00	60.00	-22.11	-9.14
5	15.76797	10.36	41.07	41.01	51.43	51.37	73.00	60.00	-21.57	-8.63
6	24.36375	10.49	48.06	47.39	58.55	57.88	73.00	60.00	-14.45	-2.12

Remarks:

1. Q.P. and AV. are abbreviations of quasi-peak and average individually.
2. The emission levels of other frequencies were very low against the limit.
3. Margin value = Emission level – Limit value
4. Correction factor = Insertion loss + Cable loss
5. Emission Level = Correction Factor + Reading Value

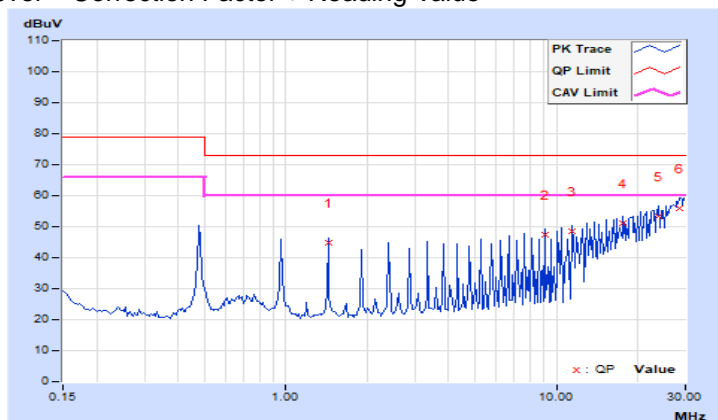


Frequency Range	150kHz ~ 30MHz	Detector Function & Bandwidth	Quasi-Peak (QP) / Average (AV), 9kHz
Input Power	12Vdc	Environmental Conditions	24°C, 73%RH, 999mbar
Tested by	Kobe Lu		
Test Mode	Mode 4		

Phase Of Power : Positive (+)										
No	Frequency (MHz)	Correction Factor (dB)	Reading Value (dBuV)		Emission Level (dBuV)		Limit (dBuV)		Margin (dB)	
			Q.P.	AV.	Q.P.	AV.	Q.P.	AV.	Q.P.	AV.
1	1.43359	9.92	34.99	31.54	44.91	41.46	73.00	60.00	-28.09	-18.54
2	9.07049	10.15	37.43	32.20	47.58	42.35	73.00	60.00	-25.42	-17.65
3	11.45975	10.23	38.38	34.50	48.61	44.73	73.00	60.00	-24.39	-15.27
4	17.66952	10.39	40.64	36.16	51.03	46.55	73.00	60.00	-21.97	-13.45
5	23.88164	10.47	43.03	38.25	53.50	48.72	73.00	60.00	-19.50	-11.28
6	28.65897	10.51	45.47	40.80	55.98	51.31	73.00	60.00	-17.02	-8.69

Remarks:

1. Q.P. and AV. are abbreviations of quasi-peak and average individually.
2. The emission levels of other frequencies were very low against the limit.
3. Margin value = Emission level – Limit value
4. Correction factor = Insertion loss + Cable loss
5. Emission Level = Correction Factor + Reading Value

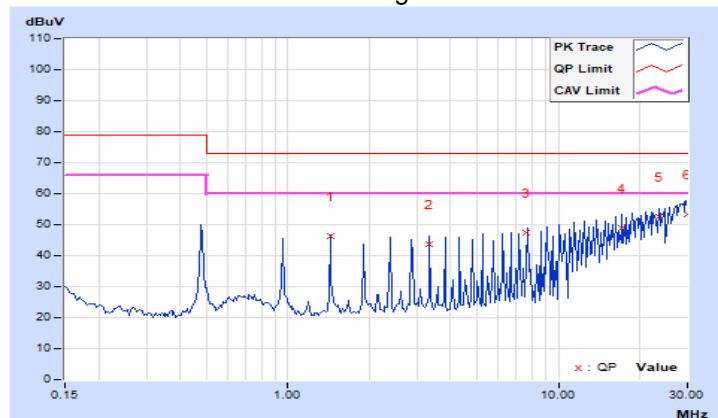


Frequency Range	150kHz ~ 30MHz	Detector Function & Bandwidth	Quasi-Peak (QP) / Average (AV), 9kHz
Input Power	12Vdc	Environmental Conditions	24°C, 73%RH, 999mbar
Tested by	Kobe Lu		
Test Mode	Mode 4		

Phase Of Power : Negative (-)										
No	Frequency (MHz)	Correction Factor (dB)	Reading Value (dBuV)		Emission Level (dBuV)		Limit (dBuV)		Margin (dB)	
			Q.P.	AV.	Q.P.	AV.	Q.P.	AV.	Q.P.	AV.
1	1.43359	9.92	36.37	33.22	46.29	43.14	73.00	60.00	-26.71	-16.86
2	3.34766	9.99	33.56	29.70	43.55	39.69	73.00	60.00	-29.45	-20.31
3	7.65125	10.11	37.19	31.87	47.30	41.98	73.00	60.00	-25.70	-18.02
4	17.21306	10.39	38.64	36.25	49.03	46.64	73.00	60.00	-23.97	-13.36
5	23.43571	10.48	41.96	37.87	52.44	48.35	73.00	60.00	-20.56	-11.65
6	29.93205	10.54	42.90	31.83	53.44	42.37	73.00	60.00	-19.56	-17.63

Remarks:

1. Q.P. and AV. are abbreviations of quasi-peak and average individually.
2. The emission levels of other frequencies were very low against the limit.
3. Margin value = Emission level – Limit value
4. Correction factor = Insertion loss + Cable loss
5. Emission Level = Correction Factor + Reading Value

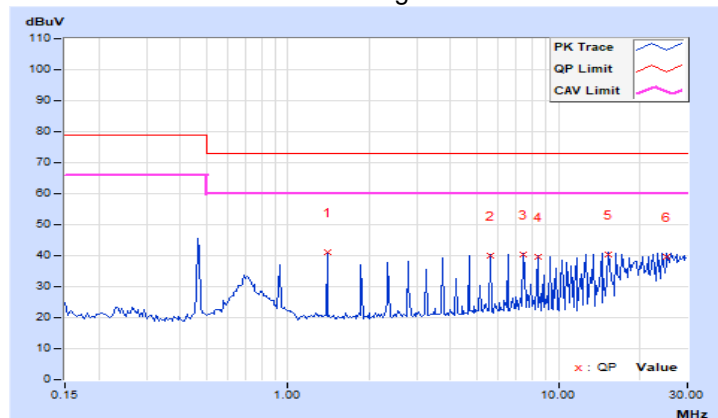


Frequency Range	150kHz ~ 30MHz	Detector Function & Bandwidth	Quasi-Peak (QP) / Average (AV), 9kHz
Input Power	24Vdc	Environmental Conditions	25°C, 78%RH, 1002mbar
Tested by	Kobe Lu		
Test Mode	Mode 5		

Phase Of Power : Positive (+)										
No	Frequency (MHz)	Correction Factor (dB)	Reading Value (dBuV)		Emission Level (dBuV)		Limit (dBuV)		Margin (dB)	
			Q.P.	AV.	Q.P.	AV.	Q.P.	AV.	Q.P.	AV.
1	1.39844	9.92	31.29	31.16	41.21	41.08	73.00	60.00	-31.79	-18.92
2	5.59384	10.05	30.01	29.50	40.06	39.55	73.00	60.00	-32.94	-20.45
3	7.45839	10.10	30.09	30.01	40.19	40.11	73.00	60.00	-32.81	-19.89
4	8.38690	10.13	29.54	29.41	39.67	39.54	73.00	60.00	-33.33	-20.46
5	15.37918	10.34	29.92	29.90	40.26	40.24	73.00	60.00	-32.74	-19.76
6	25.16453	10.48	29.07	28.54	39.55	39.02	73.00	60.00	-33.45	-20.98

Remarks:

1. Q.P. and AV. are abbreviations of quasi-peak and average individually.
2. The emission levels of other frequencies were very low against the limit.
3. Margin value = Emission level – Limit value
4. Correction factor = Insertion loss + Cable loss
5. Emission Level = Correction Factor + Reading Value

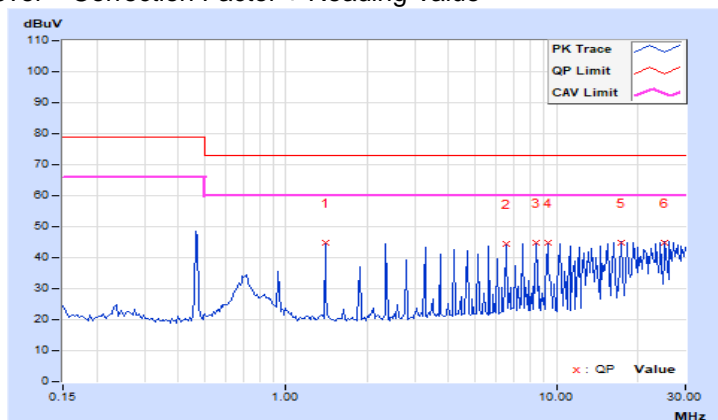


Frequency Range	150kHz ~ 30MHz	Detector Function & Bandwidth	Quasi-Peak (QP) / Average (AV), 9kHz
Input Power	24Vdc	Environmental Conditions	25°C, 78%RH, 1002mbar
Tested by	Kobe Lu		
Test Mode	Mode 5		

Phase Of Power : Negative (-)										
No	Frequency (MHz)	Correction Factor (dB)	Reading Value (dBuV)		Emission Level (dBuV)		Limit (dBuV)		Margin (dB)	
			Q.P.	AV.	Q.P.	AV.	Q.P.	AV.	Q.P.	AV.
1	1.40106	9.92	34.92	34.80	44.84	44.72	73.00	60.00	-28.16	-15.28
2	6.53899	10.08	34.41	34.30	44.49	44.38	73.00	60.00	-28.51	-15.62
3	8.40056	10.13	34.55	34.48	44.68	44.61	73.00	60.00	-28.32	-15.39
4	9.33616	10.16	34.57	34.40	44.73	44.56	73.00	60.00	-28.27	-15.44
5	17.27899	10.39	34.29	34.06	44.68	44.45	73.00	60.00	-28.32	-15.55
6	25.21341	10.50	34.32	33.10	44.82	43.60	73.00	60.00	-28.18	-16.40

Remarks:

1. Q.P. and AV. are abbreviations of quasi-peak and average individually.
2. The emission levels of other frequencies were very low against the limit.
3. Margin value = Emission level – Limit value
4. Correction factor = Insertion loss + Cable loss
5. Emission Level = Correction Factor + Reading Value

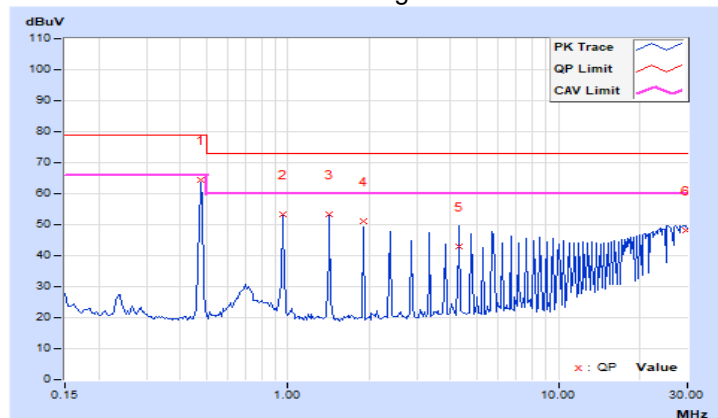


Frequency Range	150kHz ~ 30MHz	Detector Function & Bandwidth	Quasi-Peak (QP) / Average (AV), 9kHz
Input Power	24Vdc	Environmental Conditions	25°C, 78%RH, 1002mbar
Tested by	Kobe Lu		
Test Mode	Mode 6		

Phase Of Power : Positive (+)										
No	Frequency (MHz)	Correction Factor (dB)	Reading Value (dBuV)		Emission Level (dBuV)		Limit (dBuV)		Margin (dB)	
			Q.P.	AV.	Q.P.	AV.	Q.P.	AV.	Q.P.	AV.
1	0.47813	9.87	54.65	51.80	64.52	61.67	79.00	66.00	-14.48	-4.33
2	0.95469	9.90	43.48	39.73	53.38	49.63	73.00	60.00	-19.62	-10.37
3	1.42969	9.92	43.26	37.97	53.18	47.89	73.00	60.00	-19.82	-12.11
4	1.90625	9.94	41.06	34.69	51.00	44.63	73.00	60.00	-22.00	-15.37
5	4.28906	10.01	33.03	25.71	43.04	35.72	73.00	60.00	-29.96	-24.28
6	29.51172	10.52	37.58	29.21	48.10	39.73	73.00	60.00	-24.90	-20.27

Remarks:

1. Q.P. and AV. are abbreviations of quasi-peak and average individually.
2. The emission levels of other frequencies were very low against the limit.
3. Margin value = Emission level – Limit value
4. Correction factor = Insertion loss + Cable loss
5. Emission Level = Correction Factor + Reading Value

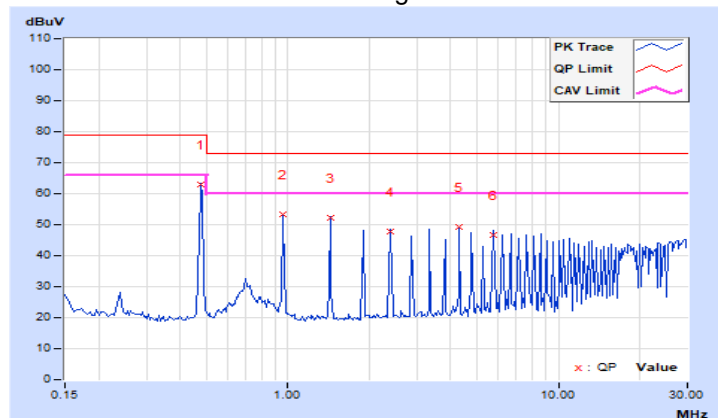


Frequency Range	150kHz ~ 30MHz	Detector Function & Bandwidth	Quasi-Peak (QP) / Average (AV), 9kHz
Input Power	24Vdc	Environmental Conditions	25°C, 78%RH, 1002mbar
Tested by	Kobe Lu		
Test Mode	Mode 6		

Phase Of Power : Negative (-)										
No	Frequency (MHz)	Correction Factor (dB)	Reading Value (dBuV)		Emission Level (dBuV)		Limit (dBuV)		Margin (dB)	
			Q.P.	AV.	Q.P.	AV.	Q.P.	AV.	Q.P.	AV.
1	0.47813	9.88	53.13	52.87	63.01	62.75	79.00	66.00	-15.99	-3.25
2	0.95469	9.91	43.50	43.10	53.41	53.01	73.00	60.00	-19.59	-6.99
3	1.43359	9.92	42.43	40.46	52.35	50.38	73.00	60.00	-20.65	-9.62
4	2.38672	9.95	37.71	35.32	47.66	45.27	73.00	60.00	-25.34	-14.73
5	4.29315	10.02	39.13	34.93	49.15	44.95	73.00	60.00	-23.85	-15.05
6	5.72274	10.06	36.49	32.65	46.55	42.71	73.00	60.00	-26.45	-17.29

Remarks:

1. Q.P. and AV. are abbreviations of quasi-peak and average individually.
2. The emission levels of other frequencies were very low against the limit.
3. Margin value = Emission level – Limit value
4. Correction factor = Insertion loss + Cable loss
5. Emission Level = Correction Factor + Reading Value

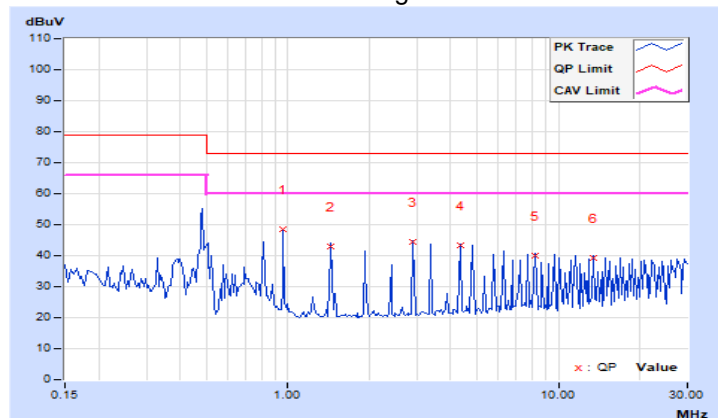


Frequency Range	150kHz ~ 30MHz	Detector Function & Bandwidth	Quasi-Peak (QP) / Average (AV), 9kHz
Input Power	24Vdc	Environmental Conditions	25°C, 78%RH, 1002mbar
Tested by	Kobe Lu		
Test Mode	Mode 7		

Phase Of Power : Positive (+)										
No	Frequency (MHz)	Correction Factor (dB)	Reading Value (dBuV)		Emission Level (dBuV)		Limit (dBuV)		Margin (dB)	
			Q.P.	AV.	Q.P.	AV.	Q.P.	AV.	Q.P.	AV.
1	0.96250	9.90	38.65	38.48	48.55	48.38	73.00	60.00	-24.45	-11.62
2	1.44531	9.92	33.18	33.01	43.10	42.93	73.00	60.00	-29.90	-17.07
3	2.89063	9.97	34.37	34.22	44.34	44.19	73.00	60.00	-28.66	-15.81
4	4.33339	10.01	33.49	33.21	43.50	43.22	73.00	60.00	-29.50	-16.78
5	8.18495	10.13	29.94	29.80	40.07	39.93	73.00	60.00	-32.93	-20.07
6	13.47949	10.29	29.11	29.01	39.40	39.30	73.00	60.00	-33.60	-20.70

Remarks:

1. Q.P. and AV. are abbreviations of quasi-peak and average individually.
2. The emission levels of other frequencies were very low against the limit.
3. Margin value = Emission level – Limit value
4. Correction factor = Insertion loss + Cable loss
5. Emission Level = Correction Factor + Reading Value

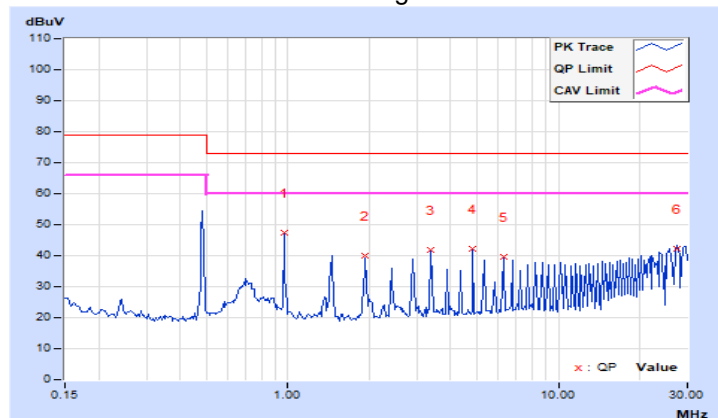


Frequency Range	150kHz ~ 30MHz	Detector Function & Bandwidth	Quasi-Peak (QP) / Average (AV), 9kHz
Input Power	24Vdc	Environmental Conditions	25°C, 78%RH, 1002mbar
Tested by	Kobe Lu		
Test Mode	Mode 7		

Phase Of Power : Negative (-)										
No	Frequency (MHz)	Correction Factor (dB)	Reading Value (dBuV)		Emission Level (dBuV)		Limit (dBuV)		Margin (dB)	
			Q.P.	AV.	Q.P.	AV.	Q.P.	AV.	Q.P.	AV.
1	0.96641	9.91	37.42	37.37	47.33	47.28	73.00	60.00	-25.67	-12.72
2	1.93104	9.94	30.09	30.02	40.03	39.96	73.00	60.00	-32.97	-20.04
3	3.38281	9.99	31.85	31.81	41.84	41.80	73.00	60.00	-31.16	-18.20
4	4.82831	10.03	32.20	32.02	42.23	42.05	73.00	60.00	-30.77	-17.95
5	6.27626	10.07	29.47	29.34	39.54	39.41	73.00	60.00	-33.46	-20.59
6	27.51638	10.52	31.83	30.57	42.35	41.09	73.00	60.00	-30.65	-18.91

Remarks:

1. Q.P. and AV. are abbreviations of quasi-peak and average individually.
2. The emission levels of other frequencies were very low against the limit.
3. Margin value = Emission level – Limit value
4. Correction factor = Insertion loss + Cable loss
5. Emission Level = Correction Factor + Reading Value

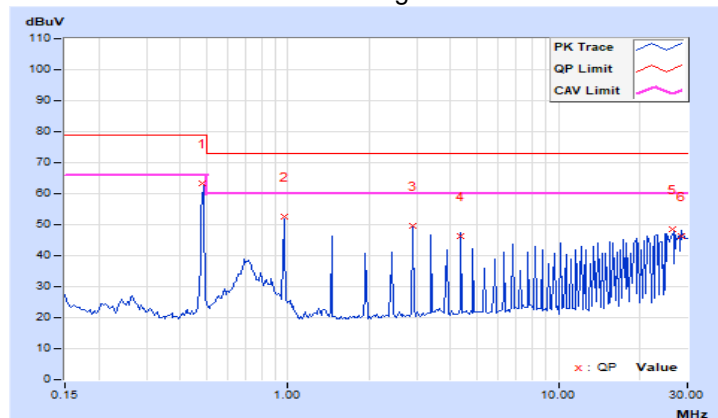


Frequency Range	150kHz ~ 30MHz	Detector Function & Bandwidth	Quasi-Peak (QP) / Average (AV), 9kHz
Input Power	48Vdc	Environmental Conditions	25°C, 78%RH, 1002mbar
Tested by	Kobe Lu		
Test Mode	Mode 8		

Phase Of Power : Positive (+)										
No	Frequency (MHz)	Correction Factor (dB)	Reading Value (dBuV)		Emission Level (dBuV)		Limit (dBuV)		Margin (dB)	
			Q.P.	AV.	Q.P.	AV.	Q.P.	AV.	Q.P.	AV.
1	0.48379	9.87	53.49	53.46	63.36	63.33	79.00	66.00	-15.64	-2.67
2	0.96641	9.90	42.59	42.46	52.49	52.36	73.00	60.00	-20.51	-7.64
3	2.89989	9.97	39.65	39.64	49.62	49.61	73.00	60.00	-23.38	-10.39
4	4.34919	10.01	36.45	36.22	46.46	46.23	73.00	60.00	-26.54	-13.77
5	26.53209	10.49	37.94	36.79	48.43	47.28	73.00	60.00	-24.57	-12.72
6	28.49754	10.51	35.66	34.28	46.17	44.79	73.00	60.00	-26.83	-15.21

Remarks:

1. Q.P. and AV. are abbreviations of quasi-peak and average individually.
2. The emission levels of other frequencies were very low against the limit.
3. Margin value = Emission level – Limit value
4. Correction factor = Insertion loss + Cable loss
5. Emission Level = Correction Factor + Reading Value

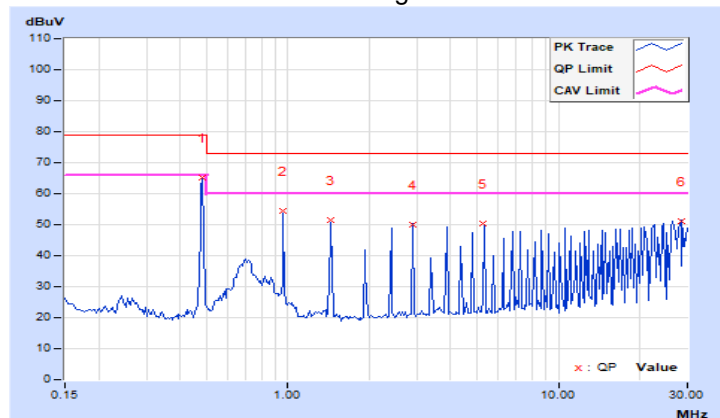


Frequency Range	150kHz ~ 30MHz	Detector Function & Bandwidth	Quasi-Peak (QP) / Average (AV), 9kHz
Input Power	48Vdc	Environmental Conditions	25°C, 78%RH, 1002mbar
Tested by	Kobe Lu		
Test Mode	Mode 8		

Phase Of Power : Negative (-)										
No	Frequency (MHz)	Correction Factor (dB)	Reading Value (dBuV)		Emission Level (dBuV)		Limit (dBuV)		Margin (dB)	
			Q.P.	AV.	Q.P.	AV.	Q.P.	AV.	Q.P.	AV.
1	0.48203	9.88	55.29	55.02	65.17	64.90	79.00	66.00	-13.83	-1.10
2	0.96250	9.91	44.36	44.27	54.27	54.18	73.00	60.00	-18.73	-5.82
3	1.44276	9.92	41.39	41.26	51.31	51.18	73.00	60.00	-21.69	-8.82
4	2.88808	9.97	39.85	39.50	49.82	49.47	73.00	60.00	-23.18	-10.53
5	5.29442	10.05	40.25	40.10	50.30	50.15	73.00	60.00	-22.70	-9.85
6	28.39161	10.53	40.66	39.43	51.19	49.96	73.00	60.00	-21.81	-10.04

Remarks:

1. Q.P. and AV. are abbreviations of quasi-peak and average individually.
2. The emission levels of other frequencies were very low against the limit.
3. Margin value = Emission level – Limit value
4. Correction factor = Insertion loss + Cable loss
5. Emission Level = Correction Factor + Reading Value

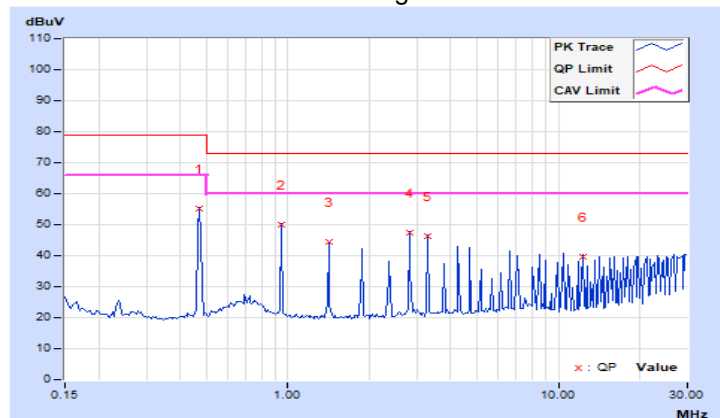


Frequency Range	150kHz ~ 30MHz	Detector Function & Bandwidth	Quasi-Peak (QP) / Average (AV), 9kHz
Input Power	24Vdc	Environmental Conditions	24°C, 73%RH, 999mbar
Tested by	Kobe Lu		
Test Mode	Mode 9		

Phase Of Power : Positive (+)										
No	Frequency (MHz)	Correction Factor (dB)	Reading Value (dBuV)		Emission Level (dBuV)		Limit (dBuV)		Margin (dB)	
			Q.P.	AV.	Q.P.	AV.	Q.P.	AV.	Q.P.	AV.
1	0.47031	9.86	45.45	45.37	55.31	55.23	79.00	66.00	-23.69	-10.77
2	0.94297	9.90	40.21	40.11	50.11	50.01	73.00	60.00	-22.89	-9.99
3	1.41797	9.92	34.49	34.33	44.41	44.25	73.00	60.00	-28.59	-15.75
4	2.83203	9.96	37.48	37.34	47.44	47.30	73.00	60.00	-25.56	-12.70
5	3.30341	9.98	36.31	36.21	46.29	46.19	73.00	60.00	-26.71	-13.81
6	12.26692	10.25	29.31	29.23	39.56	39.48	73.00	60.00	-33.44	-20.52

Remarks:

1. Q.P. and AV. are abbreviations of quasi-peak and average individually.
2. The emission levels of other frequencies were very low against the limit.
3. Margin value = Emission level – Limit value
4. Correction factor = Insertion loss + Cable loss
5. Emission Level = Correction Factor + Reading Value

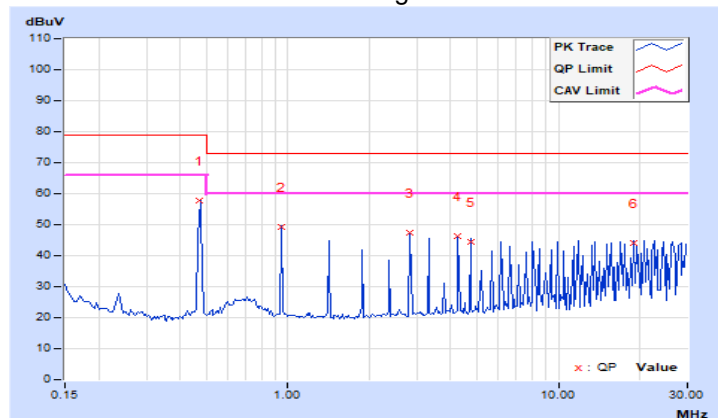


Frequency Range	150kHz ~ 30MHz	Detector Function & Bandwidth	Quasi-Peak (QP) / Average (AV), 9kHz
Input Power	24Vdc	Environmental Conditions	24°C, 73%RH, 999mbar
Tested by	Kobe Lu		
Test Mode	Mode 9		

Phase Of Power : Negative (-)										
No	Frequency (MHz)	Correction Factor (dB)	Reading Value (dBuV)		Emission Level (dBuV)		Limit (dBuV)		Margin (dB)	
			Q.P.	AV.	Q.P.	AV.	Q.P.	AV.	Q.P.	AV.
1	0.47294	9.87	47.82	47.70	57.69	57.57	79.00	66.00	-21.31	-8.43
2	0.94688	9.91	39.35	39.20	49.26	49.11	73.00	60.00	-23.74	-10.89
3	2.83709	9.97	37.37	37.21	47.34	47.18	73.00	60.00	-25.66	-12.82
4	4.25399	10.02	36.18	36.12	46.20	46.14	73.00	60.00	-26.80	-13.86
5	4.72411	10.03	34.31	34.25	44.34	44.28	73.00	60.00	-28.66	-15.72
6	18.90091	10.43	33.46	33.33	43.89	43.76	73.00	60.00	-29.11	-16.24

Remarks:

1. Q.P. and AV. are abbreviations of quasi-peak and average individually.
2. The emission levels of other frequencies were very low against the limit.
3. Margin value = Emission level – Limit value
4. Correction factor = Insertion loss + Cable loss
5. Emission Level = Correction Factor + Reading Value

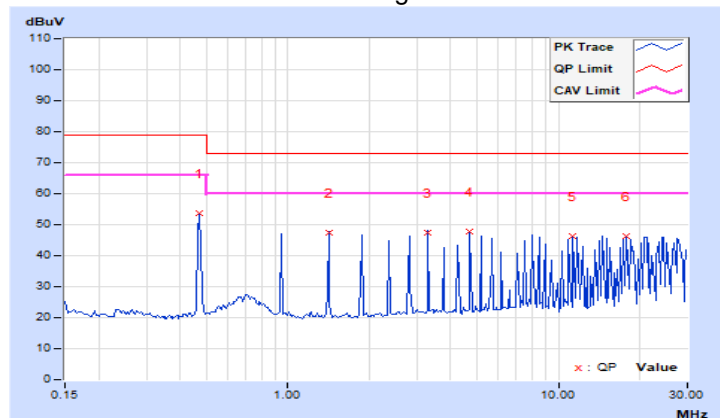


Frequency Range	150kHz ~ 30MHz	Detector Function & Bandwidth	Quasi-Peak (QP) / Average (AV), 9kHz
Input Power	48Vdc	Environmental Conditions	24°C, 73%RH, 999mbar
Tested by	Kobe Lu		
Test Mode	Mode 10		

Phase Of Power : Positive (+)										
No	Frequency (MHz)	Correction Factor (dB)	Reading Value (dBuV)		Emission Level (dBuV)		Limit (dBuV)		Margin (dB)	
			Q.P.	AV.	Q.P.	AV.	Q.P.	AV.	Q.P.	AV.
1	0.47031	9.86	43.99	43.80	53.85	53.66	79.00	66.00	-25.15	-12.34
2	1.41406	9.92	37.64	37.52	47.56	47.44	73.00	60.00	-25.44	-12.56
3	3.30078	9.98	37.30	37.22	47.28	47.20	73.00	60.00	-25.72	-12.80
4	4.71072	10.02	37.64	37.62	47.66	47.64	73.00	60.00	-25.34	-12.36
5	11.30872	10.22	36.10	36.08	46.32	46.30	73.00	60.00	-26.68	-13.70
6	17.90513	10.39	35.96	35.80	46.35	46.19	73.00	60.00	-26.65	-13.81

Remarks:

1. Q.P. and AV. are abbreviations of quasi-peak and average individually.
2. The emission levels of other frequencies were very low against the limit.
3. Margin value = Emission level – Limit value
4. Correction factor = Insertion loss + Cable loss
5. Emission Level = Correction Factor + Reading Value

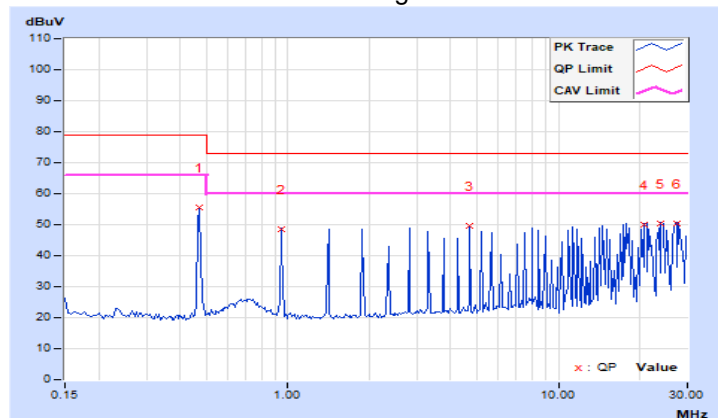


Frequency Range	150kHz ~ 30MHz	Detector Function & Bandwidth	Quasi-Peak (QP) / Average (AV), 9kHz
Input Power	48Vdc	Environmental Conditions	24°C, 73%RH, 999mbar
Tested by	Kobe Lu		
Test Mode	Mode 10		

Phase Of Power : Negative (-)										
No	Frequency (MHz)	Correction Factor (dB)	Reading Value (dBuV)		Emission Level (dBuV)		Limit (dBuV)		Margin (dB)	
			Q.P.	AV.	Q.P.	AV.	Q.P.	AV.	Q.P.	AV.
1	0.47031	9.87	45.87	45.71	55.74	55.58	79.00	66.00	-23.26	-10.42
2	0.94297	9.91	38.71	38.65	48.62	48.56	73.00	60.00	-24.38	-11.44
3	4.70703	10.03	39.42	39.36	49.45	49.39	73.00	60.00	-23.55	-10.61
4	20.70975	10.46	39.62	39.56	50.08	50.02	73.00	60.00	-22.92	-9.98
5	24.00399	10.49	39.78	39.74	50.27	50.23	73.00	60.00	-22.73	-9.77
6	27.29579	10.52	39.80	39.18	50.32	49.70	73.00	60.00	-22.68	-10.30

Remarks:

1. Q.P. and AV. are abbreviations of quasi-peak and average individually.
2. The emission levels of other frequencies were very low against the limit.
3. Margin value = Emission level – Limit value
4. Correction factor = Insertion loss + Cable loss
5. Emission Level = Correction Factor + Reading Value



6 Radiated Emission at Frequencies up to 1GHz <with external components according to total solution (3.6)>

6.1 Limits

Class A			
Frequency range (MHz)	Distance (m)	Limits (dBuV/m)	
30 - 230	10	40	
230 - 1000		47	
30 - 230	3	50	
230 - 1000		57	
Class B			
Frequency range (MHz)	Distance (m)	Limits (dBuV/m)	
30 - 230	10	30	
230 - 1000		37	
30 - 230	3	40	
230 - 1000		47	
FM Receivers			
Frequency range (MHz)	Distance (m)	Class B limits (dBuV/m)	
		Fundamental	Harmonics
30 - 230	10	50	42
230 - 300			42
300 - 1000			46
30 - 230	3	60	52
230 - 300			52
300 - 1000			56

These relaxed limits apply only to emissions at the fundamental and harmonic frequencies of the local oscillator. Signals at all other frequencies shall be compliant with the limits given in Table A.4 of EN 55032.

These relaxed limits apply only to emissions at the fundamental and harmonic frequencies of the local oscillator. Signals at all other frequencies shall be compliant with the limits given in Table A.4 of EN 55032.

Note: The lower limit shall apply at the transition frequencies.

6.2 Test Instruments

Description & Manufacturer	Model No.	Serial No.	Cal. Date	Cal. Due
EMCI Preamplifier	EMC9135	980326	Feb. 19, 2020	Feb. 18, 2021
EMCI Preamplifier	EMC9135	980327	Feb. 19, 2020	Feb. 18, 2021
Agilent Test Receiver	N9038A	MY50010158	Oct. 8, 2019	Oct. 7, 2020
Agilent Test Receiver	N9038A	MY51210114	Jan. 20, 2020	Jan. 19, 2021
Schwarzbeck Antenna	VULB9168	9168-316	Nov. 11, 2019	Nov. 10, 2020
Schwarzbeck Antenna	VULB9168	9168-317	Nov. 11, 2019	Nov. 10, 2020
Max Full. Turn Table & Tower	MF7802	MF7802121	NA	NA
Max Full. Tower	MF7802	MF780208105	NA	NA
Software	Radiated_V8.7.08	NA	NA	NA
JYEBAO RF cable With 5dB PAD	LMR-600	CABLE-CH8-01.V	Sep. 27, 2019	Sep. 26, 2020
JYEBAO RF cable With 5dB PAD	LMR-600	CABLE-CH8-02.H	Sep. 27, 2019	Sep. 26, 2020
WOKEN RF cable With 5dB PAD	8D	CABLE-CH8-03.3M	Sep. 27, 2019	Sep. 26, 2020

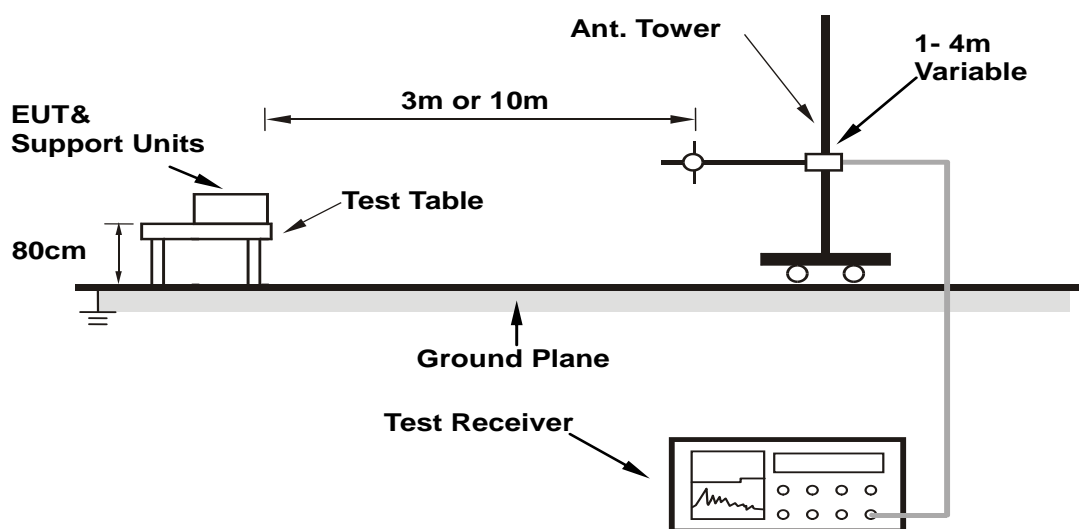
Note: 1. The calibration interval of the above test instruments is 12 months and the calibrations are traceable to NML/ROC and NIST/USA.
 2. The test was performed in Chamber No. 8.
 3. The VCCI Site Registration No. R-12946.
 4. Tested Date: Apr. 29 to May 7, 2020

6.3 Test Arrangement

- The EUT was placed on the top of a rotating table 0.8 meters above the ground at an accredited test facility. The table was rotated 360 degrees to determine the position of the highest radiation.
- The EUT was set 10 meters away from the interference-receiving antenna, which was mounted on the top of a variable-height antenna tower.
- The antenna is a broadband antenna, and its height is varied from one meter to four meters above the ground to determine the maximum value of the field strength. Both horizontal and vertical polarizations of the antenna are set to make the measurement.
- For each suspected emission, the EUT was arranged to its worst case and then the antenna was tuned to heights from 1 meter to 4 meters and the rotatable table was turned from 0 degrees to 360 degrees to find the maximum reading.
- The test-receiver system was set to quasi-peak detect function and specified bandwidth with maximum hold mode when the test frequency is up to 1 GHz.

Note:

- The resolution bandwidth and video bandwidth of test receiver/spectrum analyzer is 120kHz for quasi-peak detection (QP) at frequency up to 1GHz.
- The measurement distance is the shortest horizontal distance between an imaginary circular periphery just encompassing this arrangement and the calibration point of the antenna.



Note: Cable on the RGP must be insulated.

For the actual test configuration, please refer to the related item – Photographs of the Test Configuration.

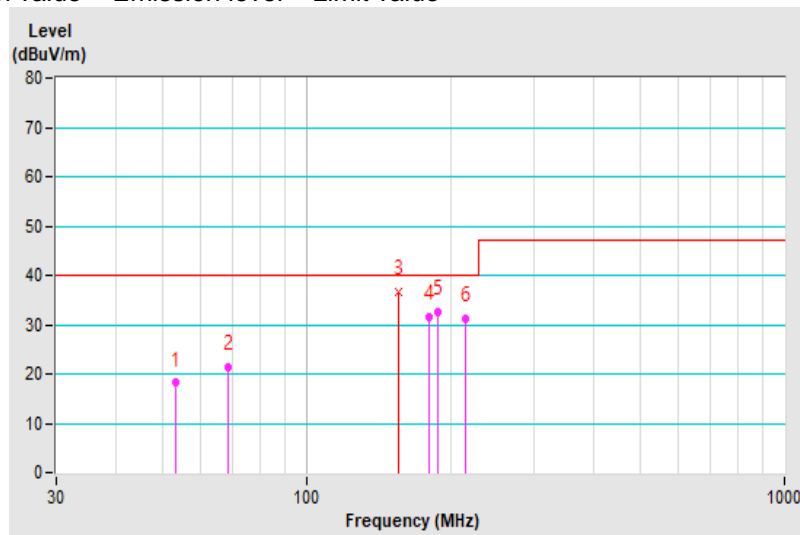
6.4 Test Results

Frequency Range	30MHz ~ 1GHz	Detector Function & Bandwidth	Quasi-Peak (QP), 120kHz
Input Power	12Vdc	Environmental Conditions	22°C, 75%RH, 1008mbar
Tested by	Kobe Lu		
Test Mode	Mode 1		

Antenna Polarity & Test Distance : Horizontal at 10 m								
No	Frequency (MHz)	Emission Level (dBuV/m)	Limit (dBuV/m)	Margin (dB)	Antenna Height (m)	Table Angle (Degree)	Raw Value (dBuV)	Correction Factor (dB/m)
1	53.26	18.18 QP	40.00	-21.82	4.00 H	34	35.33	-17.15
2	68.41	21.39 QP	40.00	-18.61	3.12 H	62	40.27	-18.88
3	156.04	36.77 QP	40.00	-3.23	4.00 H	219	52.87	-16.10
4	180.54	31.68 QP	40.00	-8.32	4.00 H	29	49.24	-17.56
5	188.28	32.67 QP	40.00	-7.33	4.00 H	24	51.11	-18.44
6	215.39	31.26 QP	40.00	-8.74	4.00 H	34	50.27	-19.01

Remarks:

1. Emission Level(dBuV/m) = Raw Value(dBuV) + Correction Factor(dB/m)
2. Correction Factor(dB/m) = Antenna Factor (dB/m) + Cable Factor (dB)
– Pre-Amplifier Factor (dB)
3. The other emission levels were very low against the limit.
4. Margin value = Emission level – Limit value

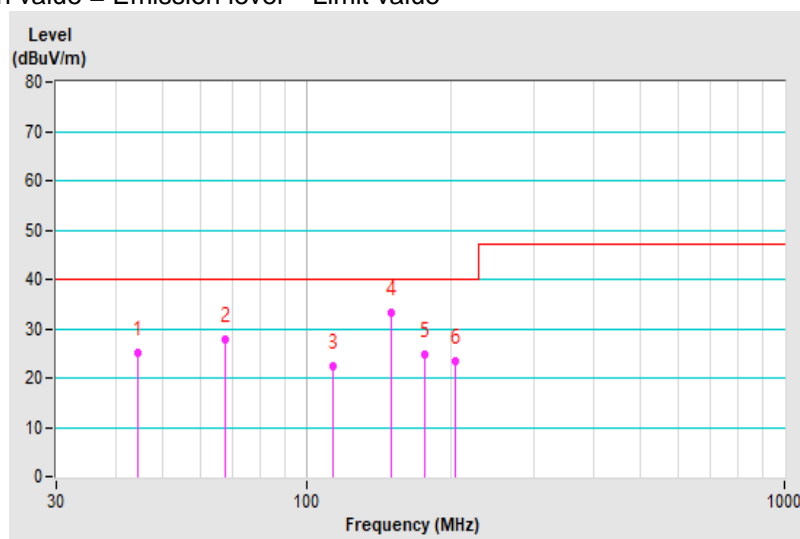


Frequency Range	30MHz ~ 1GHz	Detector Function & Bandwidth	Quasi-Peak (QP), 120kHz
Input Power	12Vdc	Environmental Conditions	22°C, 75%RH, 1008mbar
Tested by	Kobe Lu		
Test Mode	Mode 1		

Antenna Polarity & Test Distance : Vertical at 10 m								
No	Frequency (MHz)	Emission Level (dBuV/m)	Limit (dBuV/m)	Margin (dB)	Antenna Height (m)	Table Angle (Degree)	Raw Value (dBuV)	Correction Factor (dB/m)
1	44.50	25.09 QP	40.00	-14.91	1.95 V	334	43.09	-18.00
2	67.51	27.91 QP	40.00	-12.09	1.00 V	221	47.16	-19.25
3	114.07	22.37 QP	40.00	-17.63	1.93 V	332	42.04	-19.67
4	150.93	33.27 QP	40.00	-6.73	1.00 V	41	49.88	-16.61
5	177.22	24.68 QP	40.00	-15.32	1.00 V	3	42.40	-17.72
6	205.18	23.52 QP	40.00	-16.48	1.00 V	10	43.21	-19.69

Remarks:

1. Emission Level(dBuV/m) = Raw Value(dBuV) + Correction Factor(dB/m)
2. Correction Factor(dB/m) = Antenna Factor (dB/m) + Cable Factor (dB)
– Pre-Amplifier Factor (dB)
3. The other emission levels were very low against the limit.
4. Margin value = Emission level – Limit value

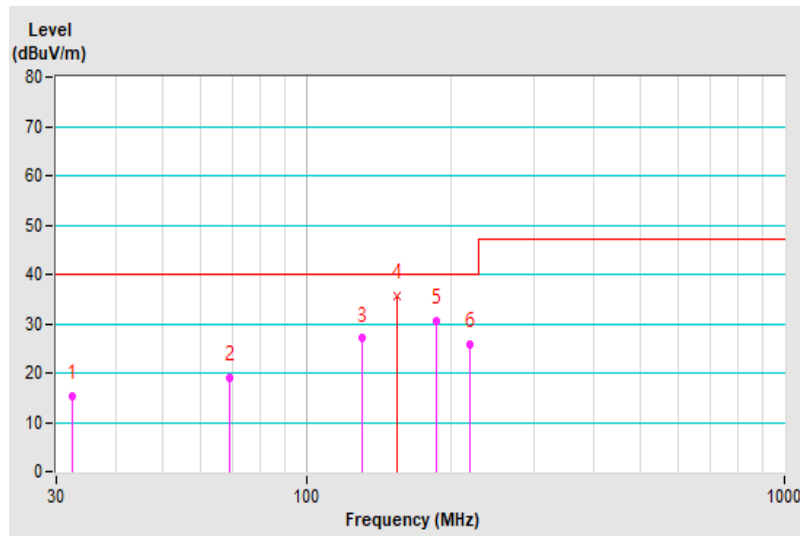


Frequency Range	30MHz ~ 1GHz	Detector Function & Bandwidth	Quasi-Peak (QP), 120kHz
Input Power	24Vdc	Environmental Conditions	22°C, 75%RH, 1008mbar
Tested by	Kobe Lu		
Test Mode	Mode 2		

Antenna Polarity & Test Distance : Horizontal at 10 m								
No	Frequency (MHz)	Emission Level (dBuV/m)	Limit (dBuV/m)	Margin (dB)	Antenna Height (m)	Table Angle (Degree)	Raw Value (dBuV)	Correction Factor (dB/m)
1	32.30	15.38 QP	40.00	-24.62	4.00 H	93	34.19	-18.81
2	69.07	19.04 QP	40.00	-20.96	3.12 H	72	38.07	-19.03
3	130.49	26.97 QP	40.00	-13.03	4.00 H	38	44.39	-17.42
4	154.93	35.68 QP	40.00	-4.32	4.00 H	176	51.69	-16.01
5	187.29	30.63 QP	40.00	-9.37	4.00 H	17	48.97	-18.34
6	220.19	25.70 QP	40.00	-14.30	2.93 H	56	44.64	-18.94

Remarks:

1. Emission Level(dBuV/m) = Raw Value(dBuV) + Correction Factor(dB/m)
2. Correction Factor(dB/m) = Antenna Factor (dB/m) + Cable Factor (dB)
– Pre-Amplifier Factor (dB)
3. The other emission levels were very low against the limit.
4. Margin value = Emission level – Limit value

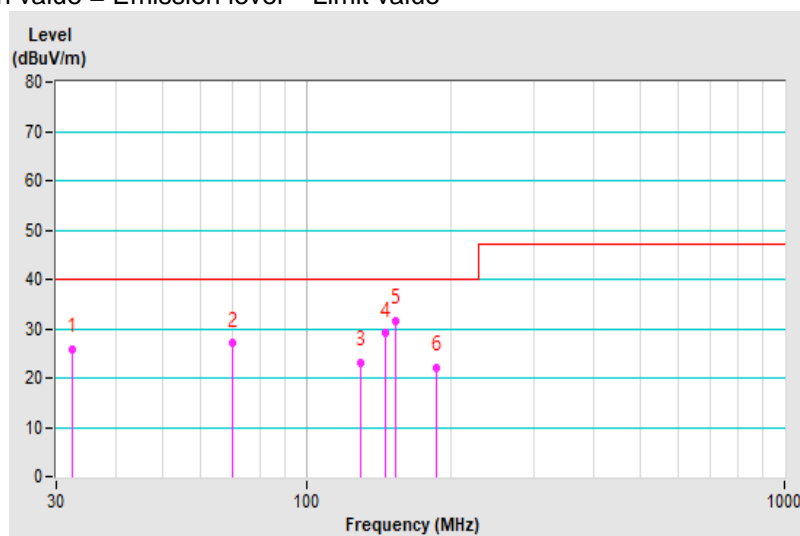


Frequency Range	30MHz ~ 1GHz	Detector Function & Bandwidth	Quasi-Peak (QP), 120kHz
Input Power	24Vdc	Environmental Conditions	22°C, 75%RH, 1008mbar
Tested by	Kobe Lu		
Test Mode	Mode 2		

Antenna Polarity & Test Distance : Vertical at 10 m								
No	Frequency (MHz)	Emission Level (dBuV/m)	Limit (dBuV/m)	Margin (dB)	Antenna Height (m)	Table Angle (Degree)	Raw Value (dBuV)	Correction Factor (dB/m)
1	32.33	25.71 QP	40.00	-14.29	1.93 V	130	45.18	-19.47
2	69.94	26.96 QP	40.00	-13.04	1.00 V	202	46.73	-19.77
3	129.57	23.09 QP	40.00	-16.91	1.88 V	332	40.94	-17.85
4	146.25	29.00 QP	40.00	-11.00	1.00 V	15	45.68	-16.68
5	154.06	31.50 QP	40.00	-8.50	1.00 V	33	47.92	-16.42
6	186.92	21.97 QP	40.00	-18.03	1.00 V	359	40.86	-18.89

Remarks:

1. Emission Level(dBuV/m) = Raw Value(dBuV) + Correction Factor(dB/m)
2. Correction Factor(dB/m) = Antenna Factor (dB/m) + Cable Factor (dB)
– Pre-Amplifier Factor (dB)
3. The other emission levels were very low against the limit.
4. Margin value = Emission level – Limit value

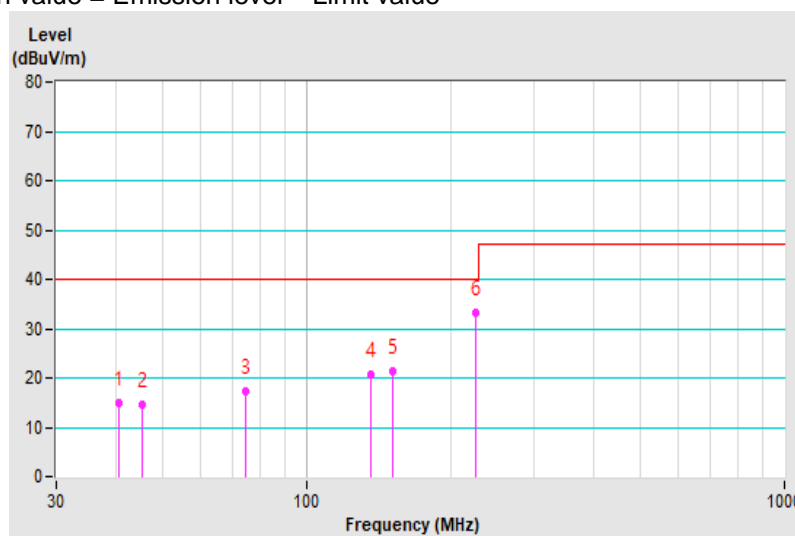


Frequency Range	30MHz ~ 1GHz	Detector Function & Bandwidth	Quasi-Peak (QP), 120kHz
Input Power	48Vdc	Environmental Conditions	22°C, 75%RH, 1008mbar
Tested by	Kobe Lu		
Test Mode	Mode 3		

Antenna Polarity & Test Distance : Horizontal at 10 m								
No	Frequency (MHz)	Emission Level (dBuV/m)	Limit (dBuV/m)	Margin (dB)	Antenna Height (m)	Table Angle (Degree)	Raw Value (dBuV)	Correction Factor (dB/m)
1	40.65	15.01 QP	40.00	-24.99	4.00 H	264	32.71	-17.70
2	45.52	14.56 QP	40.00	-25.44	2.94 H	151	31.81	-17.25
3	74.67	17.21 QP	40.00	-22.79	3.05 H	242	37.30	-20.09
4	136.80	20.72 QP	40.00	-19.28	4.00 H	203	37.62	-16.90
5	151.69	21.37 QP	40.00	-18.63	4.00 H	177	37.51	-16.14
6	226.69	33.35 QP	40.00	-6.65	4.00 H	37	52.23	-18.88

Remarks:

1. Emission Level(dBuV/m) = Raw Value(dBuV) + Correction Factor(dB/m)
2. Correction Factor(dB/m) = Antenna Factor (dB/m) + Cable Factor (dB)
– Pre-Amplifier Factor (dB)
3. The other emission levels were very low against the limit.
4. Margin value = Emission level – Limit value

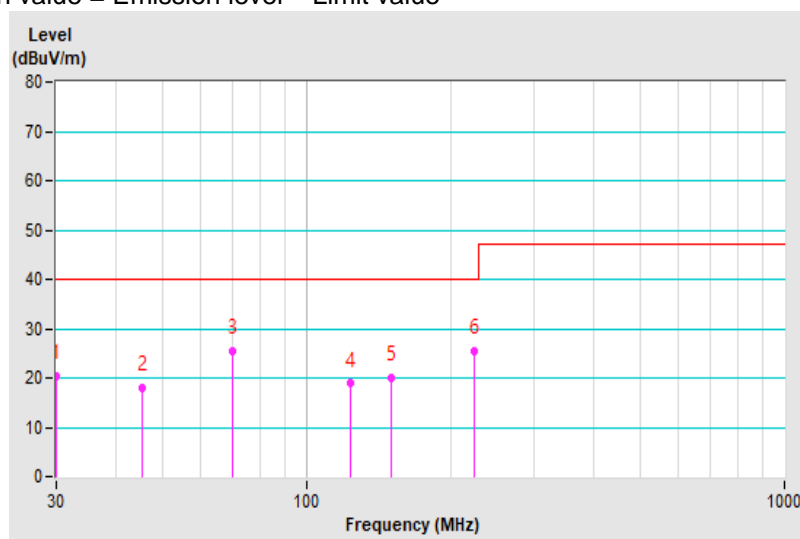


Frequency Range	30MHz ~ 1GHz	Detector Function & Bandwidth	Quasi-Peak (QP), 120kHz
Input Power	48Vdc	Environmental Conditions	22°C, 75%RH, 1008mbar
Tested by	Kobe Lu		
Test Mode	Mode 3		

Antenna Polarity & Test Distance : Vertical at 10 m								
No	Frequency (MHz)	Emission Level (dBuV/m)	Limit (dBuV/m)	Margin (dB)	Antenna Height (m)	Table Angle (Degree)	Raw Value (dBuV)	Correction Factor (dB/m)
1	30.00	20.31 QP	40.00	-19.69	1.00 V	207	39.73	-19.42
2	45.35	17.99 QP	40.00	-22.01	1.92 V	318	35.88	-17.89
3	70.06	25.39 QP	40.00	-14.61	1.00 V	289	45.17	-19.78
4	123.46	18.85 QP	40.00	-21.15	1.00 V	353	37.38	-18.53
5	150.47	19.94 QP	40.00	-20.06	1.00 V	337	36.54	-16.60
6	224.36	25.43 QP	40.00	-14.57	1.00 V	360	44.84	-19.41

Remarks:

1. Emission Level(dBuV/m) = Raw Value(dBuV) + Correction Factor(dB/m)
2. Correction Factor(dB/m) = Antenna Factor (dB/m) + Cable Factor (dB)
– Pre-Amplifier Factor (dB)
3. The other emission levels were very low against the limit.
4. Margin value = Emission level – Limit value

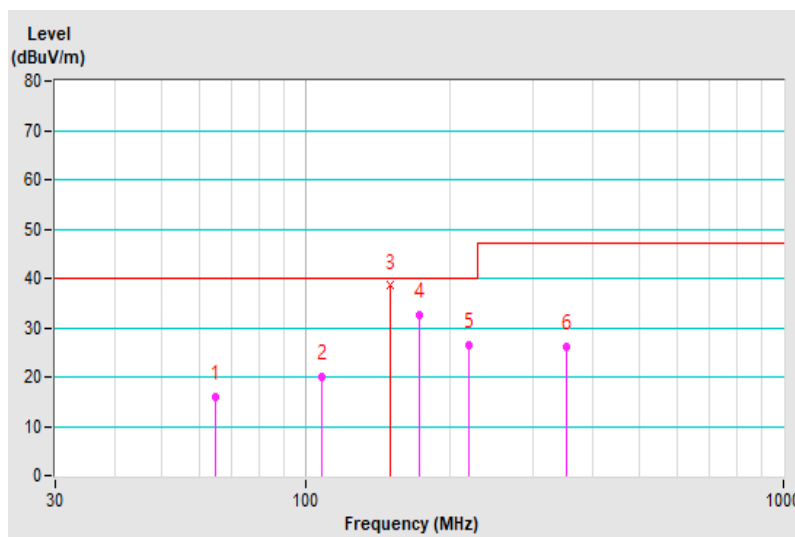


Frequency Range	30MHz ~ 1GHz	Detector Function & Bandwidth	Quasi-Peak (QP), 120kHz
Input Power	12Vdc	Environmental Conditions	25°C, 65%RH, 1000mbar
Tested by	Vhenson Huang		
Test Mode	Mode 4		

Antenna Polarity & Test Distance : Horizontal at 10 m								
No	Frequency (MHz)	Emission Level (dBuV/m)	Limit (dBuV/m)	Margin (dB)	Antenna Height (m)	Table Angle (Degree)	Raw Value (dBuV)	Correction Factor (dB/m)
1	64.75	16.07 QP	40.00	-23.93	4.00 H	26	34.27	-18.20
2	108.52	20.09 QP	40.00	-19.91	4.00 H	28	39.72	-19.63
3	150.89	38.55 QP	40.00	-1.45	4.00 H	47	54.70	-16.15
4	173.37	32.46 QP	40.00	-7.54	4.00 H	19	49.15	-16.69
5	220.51	26.46 QP	40.00	-13.54	4.00 H	74	45.41	-18.95
6	352.72	26.17 QP	47.00	-20.83	3.03 H	2	40.10	-13.93

Remarks:

1. Emission Level(dBuV/m) = Raw Value(dBuV) + Correction Factor(dB/m)
2. Correction Factor(dB/m) = Antenna Factor (dB/m) + Cable Factor (dB)
– Pre-Amplifier Factor (dB)
3. The other emission levels were very low against the limit.
4. Margin value = Emission level – Limit value

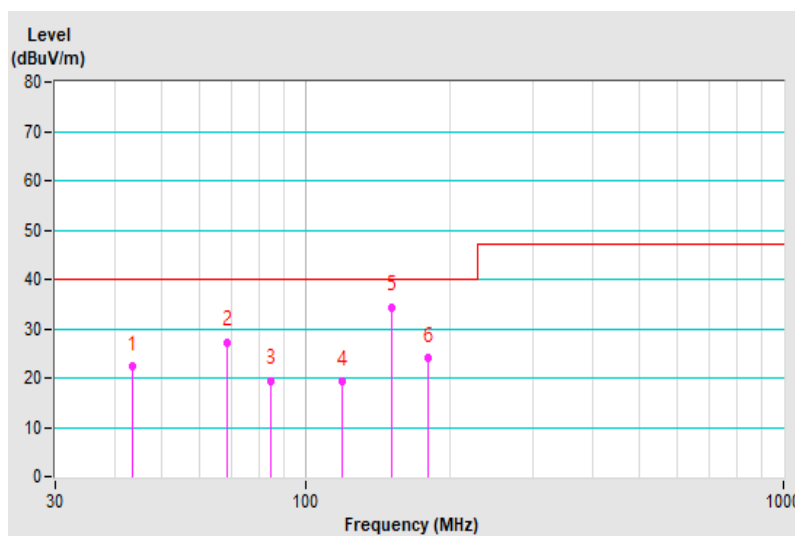


Frequency Range	30MHz ~ 1GHz	Detector Function & Bandwidth	Quasi-Peak (QP), 120kHz
Input Power	12Vdc	Environmental Conditions	25°C, 65%RH, 1000mbar
Tested by	Vhenson Huang		
Test Mode	Mode 4		

Antenna Polarity & Test Distance : Vertical at 10 m								
No	Frequency (MHz)	Emission Level (dBuV/m)	Limit (dBuV/m)	Margin (dB)	Antenna Height (m)	Table Angle (Degree)	Raw Value (dBuV)	Correction Factor (dB/m)
1	43.53	22.21 QP	40.00	-17.79	1.12 V	325	40.31	-18.10
2	68.58	27.07 QP	40.00	-12.93	1.95 V	219	46.69	-19.62
3	84.93	19.31 QP	40.00	-20.69	2.11 V	10	42.13	-22.82
4	119.22	19.19 QP	40.00	-20.81	1.00 V	332	38.25	-19.06
5	151.40	34.17 QP	40.00	-5.83	1.00 V	3	50.77	-16.60
6	181.00	23.92 QP	40.00	-16.08	1.00 V	4	42.11	-18.19

Remarks:

1. Emission Level(dBuV/m) = Raw Value(dBuV) + Correction Factor(dB/m)
2. Correction Factor(dB/m) = Antenna Factor (dB/m) + Cable Factor (dB)
– Pre-Amplifier Factor (dB)
3. The other emission levels were very low against the limit.
4. Margin value = Emission level – Limit value

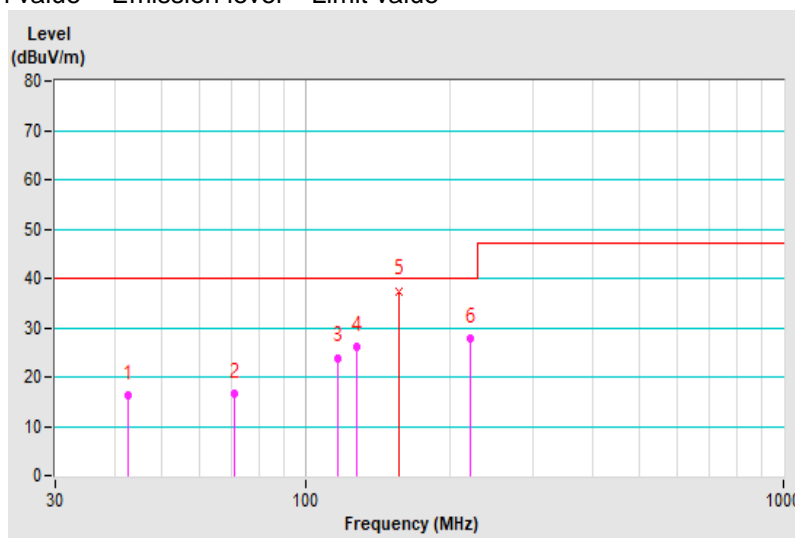


Frequency Range	30MHz ~ 1GHz	Detector Function & Bandwidth	Quasi-Peak (QP), 120kHz
Input Power	24Vdc	Environmental Conditions	25°C, 65%RH, 1000mbar
Tested by	Vhenson Huang		
Test Mode	Mode 5		

Antenna Polarity & Test Distance : Horizontal at 10 m								
No	Frequency (MHz)	Emission Level (dBuV/m)	Limit (dBuV/m)	Margin (dB)	Antenna Height (m)	Table Angle (Degree)	Raw Value (dBuV)	Correction Factor (dB/m)
1	42.71	16.14 QP	40.00	-23.86	4.00 H	153	33.66	-17.52
2	71.18	16.50 QP	40.00	-23.50	4.00 H	25	35.82	-19.32
3	117.03	23.82 QP	40.00	-16.18	4.00 H	25	42.55	-18.73
4	127.70	25.99 QP	40.00	-14.01	4.00 H	199	43.71	-17.72
5	157.20	37.37 QP	40.00	-2.63	4.00 H	179	53.32	-15.95
6	221.41	27.71 QP	40.00	-12.29	4.00 H	27	46.66	-18.95

Remarks:

1. Emission Level(dBuV/m) = Raw Value(dBuV) + Correction Factor(dB/m)
2. Correction Factor(dB/m) = Antenna Factor (dB/m) + Cable Factor (dB)
– Pre-Amplifier Factor (dB)
3. The other emission levels were very low against the limit.
4. Margin value = Emission level – Limit value

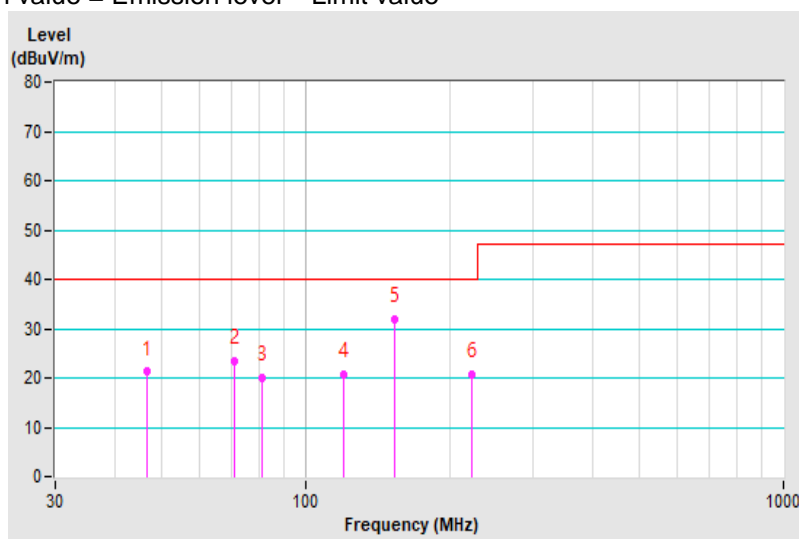


Frequency Range	30MHz ~ 1GHz	Detector Function & Bandwidth	Quasi-Peak (QP), 120kHz
Input Power	24Vdc	Environmental Conditions	25°C, 65%RH, 1000mbar
Tested by	Vhenson Huang		
Test Mode	Mode 5		

Antenna Polarity & Test Distance : Vertical at 10 m								
No	Frequency (MHz)	Emission Level (dBuV/m)	Limit (dBuV/m)	Margin (dB)	Antenna Height (m)	Table Angle (Degree)	Raw Value (dBuV)	Correction Factor (dB/m)
1	46.73	21.25 QP	40.00	-18.75	2.13 V	315	39.13	-17.88
2	71.03	23.34 QP	40.00	-16.66	1.42 V	332	43.28	-19.94
3	81.24	20.11 QP	40.00	-19.89	1.76 V	107	42.46	-22.35
4	120.14	20.73 QP	40.00	-19.27	1.00 V	332	39.64	-18.91
5	153.60	32.00 QP	40.00	-8.00	1.00 V	24	48.49	-16.49
6	223.15	20.77 QP	40.00	-19.23	1.00 V	134	40.18	-19.41

Remarks:

1. Emission Level(dBuV/m) = Raw Value(dBuV) + Correction Factor(dB/m)
2. Correction Factor(dB/m) = Antenna Factor (dB/m) + Cable Factor (dB)
– Pre-Amplifier Factor (dB)
3. The other emission levels were very low against the limit.
4. Margin value = Emission level – Limit value

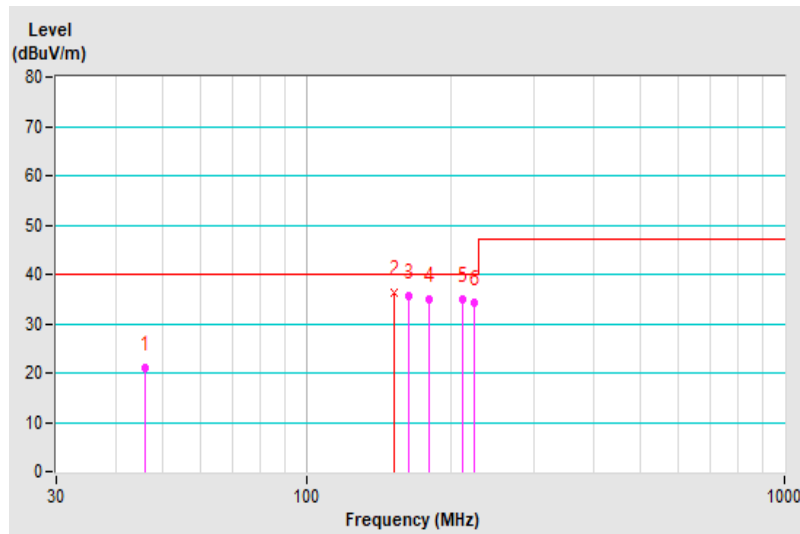


Frequency Range	30MHz ~ 1GHz	Detector Function & Bandwidth	Quasi-Peak (QP), 120kHz
Input Power	24Vdc	Environmental Conditions	22°C, 75%RH, 1008mbar
Tested by	Kobe Lu		
Test Mode	Mode 6		

Antenna Polarity & Test Distance : Horizontal at 10 m								
No	Frequency (MHz)	Emission Level (dBuV/m)	Limit (dBuV/m)	Margin (dB)	Antenna Height (m)	Table Angle (Degree)	Raw Value (dBuV)	Correction Factor (dB/m)
1	45.98	21.11 QP	40.00	-18.89	4.00 H	301	38.32	-17.21
2	152.45	36.22 QP	40.00	-3.78	3.78 H	177	52.35	-16.13
3	164.01	35.61 QP	40.00	-4.39	4.00 H	171	51.82	-16.21
4	180.13	34.89 QP	40.00	-5.11	4.00 H	24	52.41	-17.52
5	212.17	35.05 QP	40.00	-4.95	4.00 H	25	54.16	-19.11
6	225.12	34.28 QP	40.00	-5.72	4.00 H	36	53.26	-18.98

Remarks:

1. Emission Level(dBuV/m) = Raw Value(dBuV) + Correction Factor(dB/m)
2. Correction Factor(dB/m) = Antenna Factor (dB/m) + Cable Factor (dB)
– Pre-Amplifier Factor (dB)
3. The other emission levels were very low against the limit.
4. Margin value = Emission level – Limit value

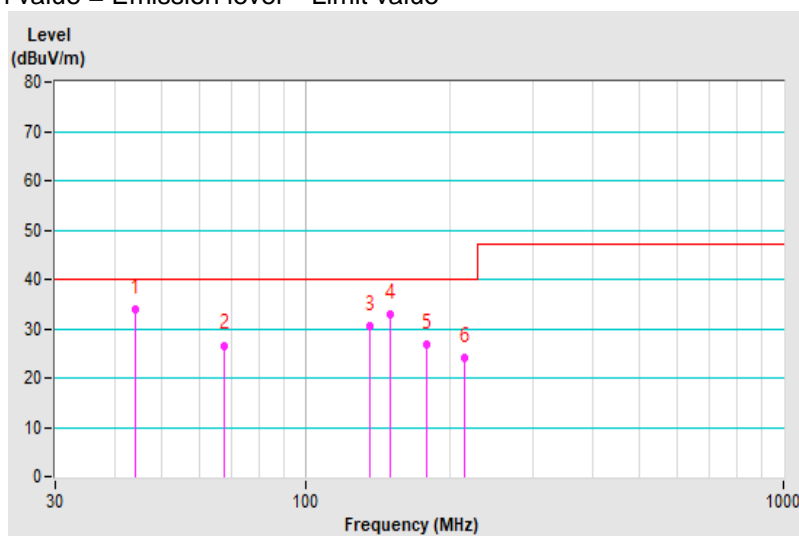


Frequency Range	30MHz ~ 1GHz	Detector Function & Bandwidth	Quasi-Peak (QP), 120kHz
Input Power	24Vdc	Environmental Conditions	22°C, 75%RH, 1008mbar
Tested by	Kobe Lu		
Test Mode	Mode 6		

Antenna Polarity & Test Distance : Vertical at 10 m								
No	Frequency (MHz)	Emission Level (dBuV/m)	Limit (dBuV/m)	Margin (dB)	Antenna Height (m)	Table Angle (Degree)	Raw Value (dBuV)	Correction Factor (dB/m)
1	44.11	33.74 QP	40.00	-6.26	1.92 V	313	51.80	-18.06
2	67.44	26.49 QP	40.00	-13.51	1.00 V	215	45.72	-19.23
3	136.92	30.34 QP	40.00	-9.66	1.88 V	332	47.64	-17.30
4	150.84	32.78 QP	40.00	-7.22	1.96 V	325	49.39	-16.61
5	179.21	26.64 QP	40.00	-13.36	1.86 V	320	44.57	-17.93
6	215.97	23.97 QP	40.00	-16.03	1.85 V	327	43.34	-19.37

Remarks:

1. Emission Level(dBuV/m) = Raw Value(dBuV) + Correction Factor(dB/m)
2. Correction Factor(dB/m) = Antenna Factor (dB/m) + Cable Factor (dB)
– Pre-Amplifier Factor (dB)
3. The other emission levels were very low against the limit.
4. Margin value = Emission level – Limit value

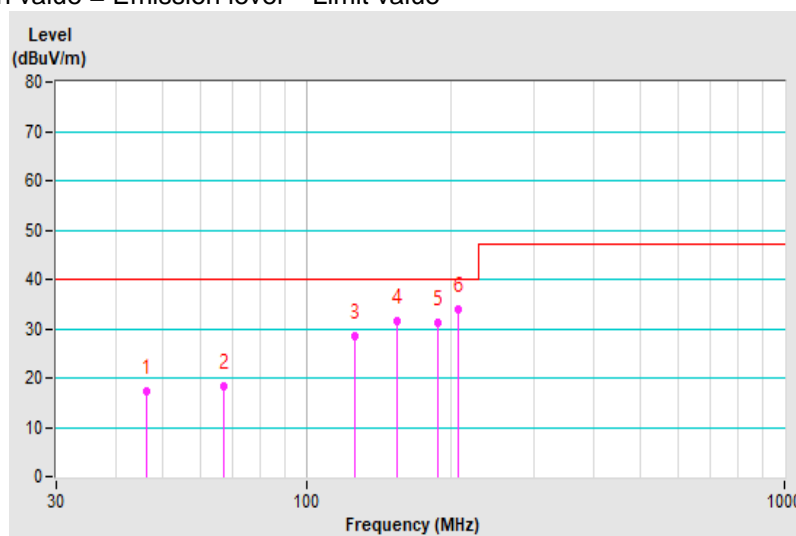


Frequency Range	30MHz ~ 1GHz	Detector Function & Bandwidth	Quasi-Peak (QP), 120kHz
Input Power	24Vdc	Environmental Conditions	22°C, 75%RH, 1008mbar
Tested by	Kobe Lu		
Test Mode	Mode 7		

Antenna Polarity & Test Distance : Horizontal at 10 m								
No	Frequency (MHz)	Emission Level (dBuV/m)	Limit (dBuV/m)	Margin (dB)	Antenna Height (m)	Table Angle (Degree)	Raw Value (dBuV)	Correction Factor (dB/m)
1	46.32	17.27 QP	40.00	-22.73	4.00 H	284	34.51	-17.24
2	67.05	18.29 QP	40.00	-21.71	4.00 H	244	36.61	-18.32
3	126.15	28.39 QP	40.00	-11.61	4.00 H	178	46.21	-17.82
4	155.03	31.52 QP	40.00	-8.48	4.00 H	174	47.53	-16.01
5	188.47	31.34 QP	40.00	-8.66	4.00 H	20	49.79	-18.45
6	208.12	33.92 QP	40.00	-6.08	4.00 H	175	53.12	-19.20

Remarks:

1. Emission Level(dBuV/m) = Raw Value(dBuV) + Correction Factor(dB/m)
2. Correction Factor(dB/m) = Antenna Factor (dB/m) + Cable Factor (dB)
– Pre-Amplifier Factor (dB)
3. The other emission levels were very low against the limit.
4. Margin value = Emission level – Limit value

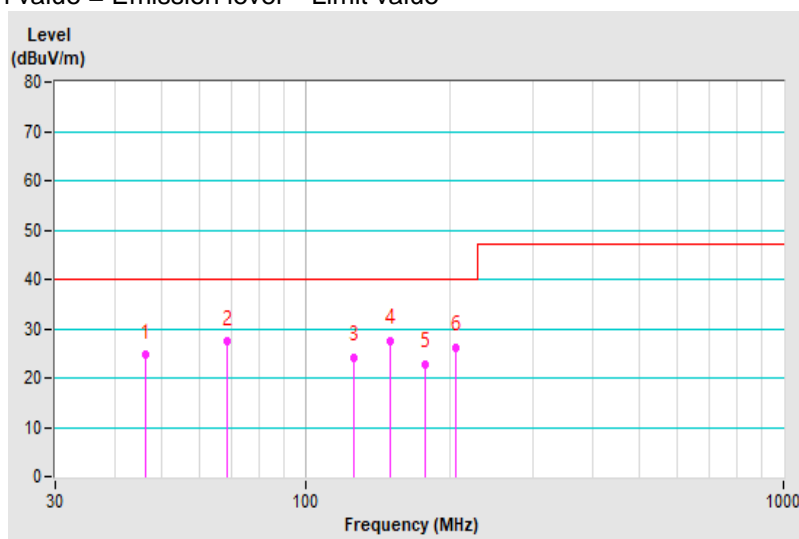


Frequency Range	30MHz ~ 1GHz	Detector Function & Bandwidth	Quasi-Peak (QP), 120kHz
Input Power	24Vdc	Environmental Conditions	22°C, 75%RH, 1008mbar
Tested by	Kobe Lu		
Test Mode	Mode 7		

Antenna Polarity & Test Distance : Vertical at 10 m								
No	Frequency (MHz)	Emission Level (dBuV/m)	Limit (dBuV/m)	Margin (dB)	Antenna Height (m)	Table Angle (Degree)	Raw Value (dBuV)	Correction Factor (dB/m)
1	46.32	24.66 QP	40.00	-15.34	1.90 V	312	42.51	-17.85
2	68.53	27.31 QP	40.00	-12.69	1.00 V	308	46.92	-19.61
3	126.25	24.03 QP	40.00	-15.97	1.00 V	349	42.18	-18.15
4	150.11	27.42 QP	40.00	-12.58	1.00 V	7	44.01	-16.59
5	177.95	22.63 QP	40.00	-17.37	1.92 V	332	40.40	-17.77
6	206.88	26.26 QP	40.00	-13.74	1.00 V	358	45.90	-19.64

Remarks:

1. Emission Level(dBuV/m) = Raw Value(dBuV) + Correction Factor(dB/m)
2. Correction Factor(dB/m) = Antenna Factor (dB/m) + Cable Factor (dB)
– Pre-Amplifier Factor (dB)
3. The other emission levels were very low against the limit.
4. Margin value = Emission level – Limit value

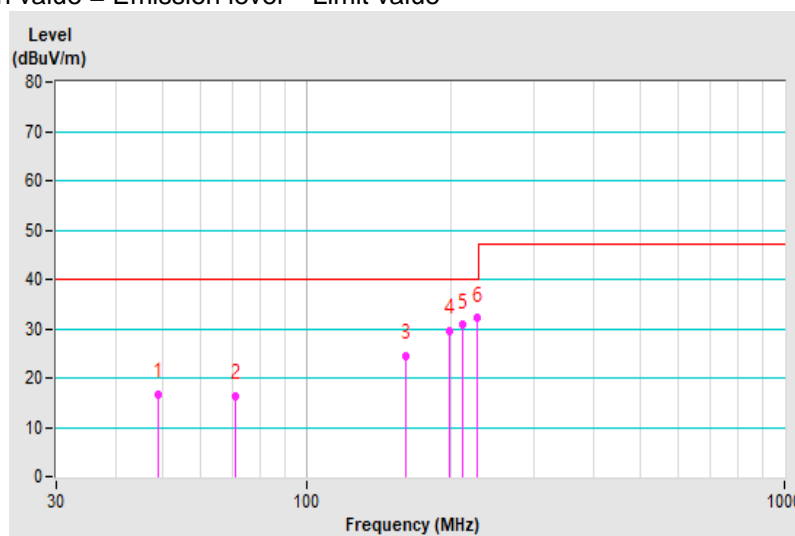


Frequency Range	30MHz ~ 1GHz	Detector Function & Bandwidth	Quasi-Peak (QP), 120kHz
Input Power	48Vdc	Environmental Conditions	22°C, 75%RH, 1008mbar
Tested by	Kobe Lu		
Test Mode	Mode 8		

Antenna Polarity & Test Distance : Horizontal at 10 m								
No	Frequency (MHz)	Emission Level (dBuV/m)	Limit (dBuV/m)	Margin (dB)	Antenna Height (m)	Table Angle (Degree)	Raw Value (dBuV)	Correction Factor (dB/m)
1	49.16	16.67 QP	40.00	-23.33	4.00 H	291	33.79	-17.12
2	71.25	16.21 QP	40.00	-23.79	4.00 H	59	35.55	-19.34
3	162.02	24.40 QP	40.00	-15.60	4.00 H	172	40.43	-16.03
4	198.61	29.56 QP	40.00	-10.44	4.00 H	176	48.75	-19.19
5	212.09	30.68 QP	40.00	-9.32	4.00 H	181	49.79	-19.11
6	227.23	32.06 QP	40.00	-7.94	4.00 H	35	50.91	-18.85

Remarks:

1. Emission Level(dBuV/m) = Raw Value(dBuV) + Correction Factor(dB/m)
2. Correction Factor(dB/m) = Antenna Factor (dB/m) + Cable Factor (dB)
– Pre-Amplifier Factor (dB)
3. The other emission levels were very low against the limit.
4. Margin value = Emission level – Limit value

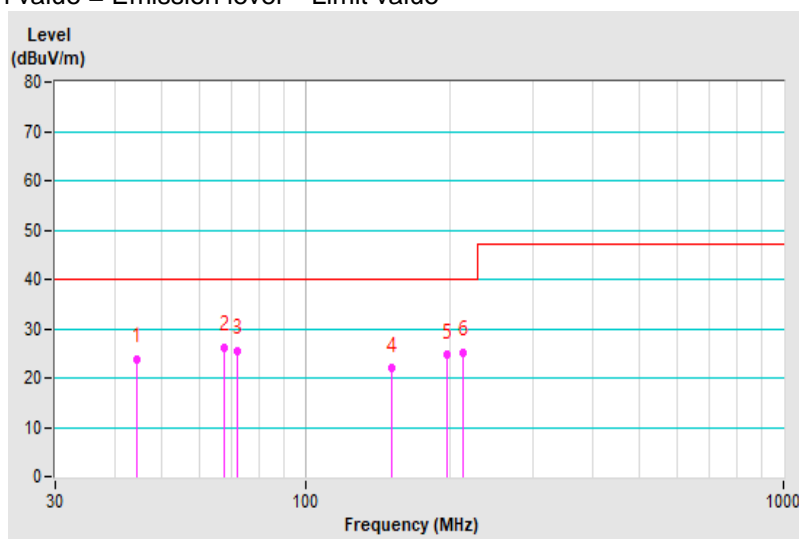


Frequency Range	30MHz ~ 1GHz	Detector Function & Bandwidth	Quasi-Peak (QP), 120kHz
Input Power	48Vdc	Environmental Conditions	22°C, 75%RH, 1008mbar
Tested by	Kobe Lu		
Test Mode	Mode 8		

Antenna Polarity & Test Distance : Vertical at 10 m								
No	Frequency (MHz)	Emission Level (dBuV/m)	Limit (dBuV/m)	Margin (dB)	Antenna Height (m)	Table Angle (Degree)	Raw Value (dBuV)	Correction Factor (dB/m)
1	44.33	23.83 QP	40.00	-16.17	1.95 V	307	41.85	-18.02
2	67.61	26.14 QP	40.00	-13.86	1.90 V	249	45.44	-19.30
3	72.24	25.46 QP	40.00	-14.54	1.00 V	229	45.74	-20.28
4	151.61	21.86 QP	40.00	-18.14	1.00 V	351	38.45	-16.59
5	197.96	24.58 QP	40.00	-15.42	1.00 V	336	44.25	-19.67
6	213.31	25.04 QP	40.00	-14.96	1.00 V	352	44.46	-19.42

Remarks:

1. Emission Level(dBuV/m) = Raw Value(dBuV) + Correction Factor(dB/m)
2. Correction Factor(dB/m) = Antenna Factor (dB/m) + Cable Factor (dB)
– Pre-Amplifier Factor (dB)
3. The other emission levels were very low against the limit.
4. Margin value = Emission level – Limit value

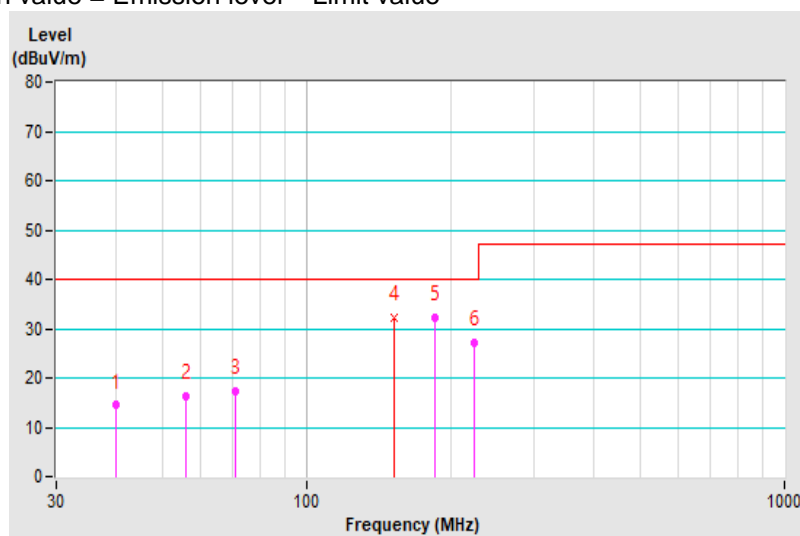


Frequency Range	30MHz ~ 1GHz	Detector Function & Bandwidth	Quasi-Peak (QP), 120kHz
Input Power	24Vdc	Environmental Conditions	22°C, 75%RH, 1008mbar
Tested by	Kobe Lu		
Test Mode	Mode 9		

Antenna Polarity & Test Distance : Horizontal at 10 m								
No	Frequency (MHz)	Emission Level (dBuV/m)	Limit (dBuV/m)	Margin (dB)	Antenna Height (m)	Table Angle (Degree)	Raw Value (dBuV)	Correction Factor (dB/m)
1	39.94	14.44 QP	40.00	-25.56	4.00 H	89	32.31	-17.87
2	56.17	16.36 QP	40.00	-23.64	4.00 H	10	33.55	-17.19
3	71.30	17.24 QP	40.00	-22.76	4.00 H	192	36.59	-19.35
4	152.27	32.13 QP	40.00	-7.87	3.83 H	179	48.26	-16.13
5	185.20	32.12 QP	40.00	-7.88	4.00 H	26	50.25	-18.13
6	223.78	27.20 QP	40.00	-12.80	4.00 H	35	46.18	-18.98

Remarks:

1. Emission Level(dBuV/m) = Raw Value(dBuV) + Correction Factor(dB/m)
2. Correction Factor(dB/m) = Antenna Factor (dB/m) + Cable Factor (dB)
– Pre-Amplifier Factor (dB)
3. The other emission levels were very low against the limit.
4. Margin value = Emission level – Limit value

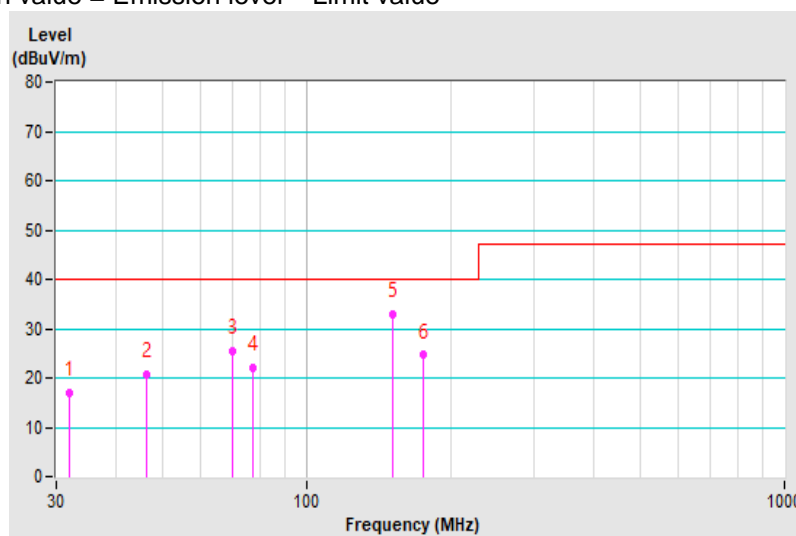


Frequency Range	30MHz ~ 1GHz	Detector Function & Bandwidth	Quasi-Peak (QP), 120kHz
Input Power	24Vdc	Environmental Conditions	22°C, 75%RH, 1008mbar
Tested by	Kobe Lu		
Test Mode	Mode 9		

Antenna Polarity & Test Distance : Vertical at 10 m								
No	Frequency (MHz)	Emission Level (dBuV/m)	Limit (dBuV/m)	Margin (dB)	Antenna Height (m)	Table Angle (Degree)	Raw Value (dBuV)	Correction Factor (dB/m)
1	32.04	17.01 QP	40.00	-22.99	1.00 V	207	36.45	-19.44
2	46.30	20.72 QP	40.00	-19.28	1.00 V	344	38.57	-17.85
3	70.09	25.43 QP	40.00	-14.57	1.00 V	293	45.22	-19.79
4	77.53	22.18 QP	40.00	-17.82	1.94 V	0	43.65	-21.47
5	151.35	33.01 QP	40.00	-6.99	1.00 V	16	49.61	-16.60
6	175.82	24.62 QP	40.00	-15.38	1.00 V	356	42.10	-17.48

Remarks:

1. Emission Level(dBuV/m) = Raw Value(dBuV) + Correction Factor(dB/m)
2. Correction Factor(dB/m) = Antenna Factor (dB/m) + Cable Factor (dB)
– Pre-Amplifier Factor (dB)
3. The other emission levels were very low against the limit.
4. Margin value = Emission level – Limit value

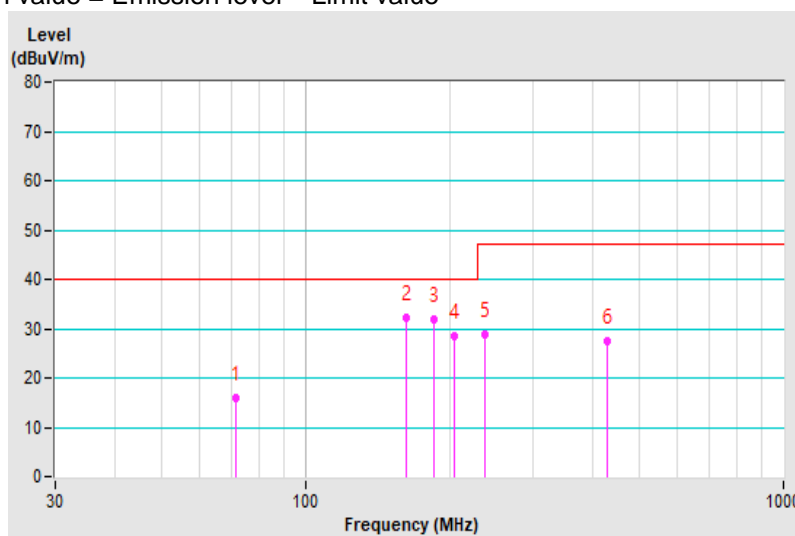


Frequency Range	30MHz ~ 1GHz	Detector Function & Bandwidth	Quasi-Peak (QP), 120kHz
Input Power	48Vdc	Environmental Conditions	25°C, 65%RH, 1000mbar
Tested by	Vhenson Huang		
Test Mode	Mode 10		

Antenna Polarity & Test Distance : Horizontal at 10 m								
No	Frequency (MHz)	Emission Level (dBuV/m)	Limit (dBuV/m)	Margin (dB)	Antenna Height (m)	Table Angle (Degree)	Raw Value (dBuV)	Correction Factor (dB/m)
1	71.71	15.97 QP	40.00	-24.03	4.00 H	38	35.44	-19.47
2	162.77	32.36 QP	40.00	-7.64	4.00 H	189	48.36	-16.00
3	185.47	31.83 QP	40.00	-8.17	4.00 H	38	49.96	-18.13
4	205.55	28.54 QP	40.00	-11.46	4.00 H	182	47.79	-19.25
5	237.02	28.74 QP	47.00	-18.26	3.84 H	213	46.41	-17.67
6	428.45	27.58 QP	47.00	-19.42	4.00 H	11	39.29	-11.71

Remarks:

1. Emission Level(dBuV/m) = Raw Value(dBuV) + Correction Factor(dB/m)
2. Correction Factor(dB/m) = Antenna Factor (dB/m) + Cable Factor (dB)
– Pre-Amplifier Factor (dB)
3. The other emission levels were very low against the limit.
4. Margin value = Emission level – Limit value

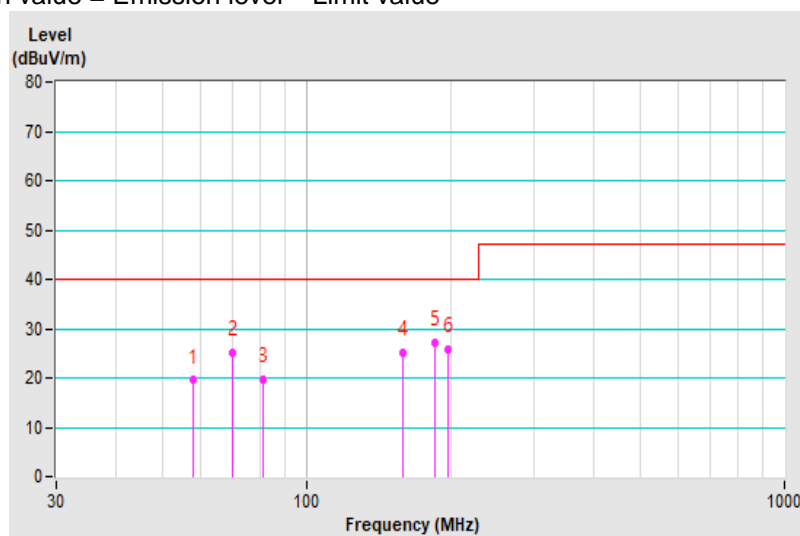


Frequency Range	30MHz ~ 1GHz	Detector Function & Bandwidth	Quasi-Peak (QP), 120kHz
Input Power	48Vdc	Environmental Conditions	25°C, 65%RH, 1000mbar
Tested by	Vhenson Huang		
Test Mode	Mode 10		

Antenna Polarity & Test Distance : Vertical at 10 m								
No	Frequency (MHz)	Emission Level (dBuV/m)	Limit (dBuV/m)	Margin (dB)	Antenna Height (m)	Table Angle (Degree)	Raw Value (dBuV)	Correction Factor (dB/m)
1	57.84	19.56 QP	40.00	-20.44	1.86 V	290	37.71	-18.15
2	69.89	25.05 QP	40.00	-14.95	1.42 V	226	44.81	-19.76
3	81.05	19.79 QP	40.00	-20.21	2.02 V	153	42.11	-22.32
4	159.37	25.02 QP	40.00	-14.98	1.00 V	344	41.47	-16.45
5	185.25	27.04 QP	40.00	-12.96	1.00 V	346	45.77	-18.73
6	198.34	25.75 QP	40.00	-14.25	1.00 V	346	45.43	-19.68

Remarks:

1. Emission Level(dBuV/m) = Raw Value(dBuV) + Correction Factor(dB/m)
2. Correction Factor(dB/m) = Antenna Factor (dB/m) + Cable Factor (dB)
– Pre-Amplifier Factor (dB)
3. The other emission levels were very low against the limit.
4. Margin value = Emission level – Limit value



7 General Immunity Requirements

EN 55024:2010/ EN 55024:2010 +A1:2015, Immunity requirements

Clause	Reference standard	Table	Test specification	Performance Criterion
4.2.1	EN/IEC 61000-4-2 ESD	1.3	Enclosure port: ±8kV Air discharge, ±4kV Contact discharge	B
4.2.3.2	EN/IEC 61000-4-3 RS	1.2	Enclosure port: 80-1000 MHz, 3V/m, 80% AM (1kHz)	A
4.2.2	EN/IEC 61000-4-4 EFT	2.3	Signal ports and telecommunication ports: xDSL equipment: ±0.5kV, 5/50 (t _r /t _w) ns, 100kHz others: ±0.5kV, 5/50 (t _r /t _w) ns, 5kHz	B
		3.3	Input DC power port: ±0.5kV, 5/50 (t _r /t _w) ns, 5kHz	
		4.5	Input AC Power ports: ±1kV, 5/50 (t _r /t _w) ns, 5kHz	
4.2.5	EN/IEC 61000-4-5 Surge	2.2	Signal and telecommunication ports (direct to outdoor cables): 10/700 (5/320) (T _r /T _d) µs w/o primary protectors: ±1kV, or with primary protectors fitted: ±4kV	C
		3.2	Input DC power port (direct to outdoor cables): 1.2/50 (8/20) (T _r /T _d) µs Line to earth: ±0.5kV	B
		4.4	Input AC Power ports: 1.2/50 (8/20) (T _r /T _d) µs, Line to line: ±1kV Line to earth: ±2kV	
4.2.3.3	EN/IEC 61000-4-6 CS	2.1	Signal and telecommunication ports(cable length > 3m): 0.15-80 MHz, 3V, 80% AM (1kHz)	A
		3.1	Input DC power port: 0.15-80 MHz, 3V, 80% AM (1kHz)	
		4.1	Input AC Power ports: 0.15-80 MHz, 3V, 80% AM (1kHz)	
4.2.4	EN/IEC 61000-4-8 PFMF	1.1	Enclosure port: 50 or 60 Hz, 1A/m	A

EN 55035:2017, Immunity requirements		
Reference standard	Test specification	Performance Criterion
EN/IEC 61000-4-2 ESD	Enclosure port: ±8kV Air discharge, ±4kV Contact discharge	B
EN/IEC 61000-4-3 RS	Enclosure port: Swept freq. test : 80-1000 MHz, 3V/m, 80% AM (1kHz), Spot freq. test : 1800, 2600, 3500, 5000 MHz (±1 %), 3V/m, 80% AM (1kHz)	A
EN/IEC 61000-4-4 EFT	Analogue/digital data ports (cable length > 3m): xDSL equipment: ±0.5kV, 5/50 (t _r /t _w) ns, 100kHz others: ±0.5kV, 5/50 (t _r /t _w) ns, 5kHz	B
	DC network power port(cable length > 3m): ±0.5kV, 5/50 (t _r /t _w) ns, 5kHz	
	AC mains power ports: ±1.0kV, 5/50 (t _r /t _w) ns, 5kHz	
EN/IEC 61000-4-5 Surge	Analogue/digital data ports (direct to outdoor cables): Port type: unshielded symmetrical 10/700(5/320) (T _r /T _d) µs, w/o primary protectors (line to ground): ±1.0kV, or with primary protectors (line to ground): ±1.0kV, ±4.0kV Port type: coaxial or shielded 1.2/50 (8/20) (T _r /T _d) µs, shield to ground: ±0.5kV	C
	DC network power port (direct to outdoor cables): 1.2/50(8/20) (T _r /T _d) µs, Line to ground: ±0.5kV	B
	AC mains power ports: 1.2/50(8/20) (T _r /T _d) µs, Line to line: ±1kV, Line to ground: ±2kV	B
EN/IEC 61000-4-6 CS	Analogue/digital data ports (cable length > 3m) ; DC network power ports (cable length > 3m) ; AC mains power ports 0.15-10 MHz, 3V, 80% AM (1kHz), 10-30 MHz, 3V-1V, 80% AM (1kHz), 30-80 MHz, 1V, 80% AM (1kHz)	A
EN/IEC 61000-4-8 PFMF	Enclosure port: 50 or 60 Hz, 1A/m	A

7.1 Specific Immunity Requirements by Manufacturer

Reference standard	Test specification	Performance Criterion
EN/IEC 61000-4-2 ESD	Enclosure port: ±6kV Contact discharge	A
EN/IEC 61000-4-3 RS	Enclosure port: 80-1000 MHz, 20V/m, 80% AM (1kHz), Spot freq. test : 1800, 2600, 3500, 5000 MHz (±1 %), 20V/m, 80% AM (1kHz)	A
EN/IEC 61000-4-4 EFT	DC network power port (cable length > 3m): ±2kV, 5/50 (t _r /t _w) ns, 5kHz	A
EN/IEC 61000-4-5 Surge	DC network power port (direct to outdoor cables): 1.2/50(8/20) (T _f /T _d) μs, Line to ground: ±2kV	A
EN/IEC 61000-4-6 CS	DC network power ports (cable length > 3m) 0.15-80 MHz, 10V, 80% AM (1kHz)	A
EN/IEC 61000-4-8 PFMF	Enclosure port: 50Hz, 100A/m & 1000A/m	A

7.2 Performance Criteria

General Performance Criteria

Performance criterion A

The equipment shall continue to operate as intended without operator intervention. No degradation of performance or loss of function is allowed below a performance level specified by the manufacturer when the equipment is used as intended. The performance level may be replaced by a permissible loss of performance. If the minimum performance level or the permissible performance loss is not specified by the manufacturer, then either of these may be derived from the product description and documentation, and by what the user may reasonably expect from the equipment if used as intended.

Performance criterion B

After the test, the equipment shall continue to operate as intended without operator intervention. No degradation of performance or loss of function is allowed, after the application of the phenomena below a performance level specified by the manufacturer, when the equipment is used as intended. The performance level may be replaced by a permissible loss of performance. During the test, degradation of performance is allowed. However, no change of operating state or stored data is allowed to persist after the test. If the minimum performance level (or the permissible performance loss) is not specified by the manufacturer, then either of these may be derived from the product description and documentation, and by what the user may reasonably expect from the equipment if used as intended.

Performance criterion C

Loss of function is allowed, provided the function is self-recoverable, or can be restored by the operation of the controls by the user in accordance with the manufacturer's instructions. Functions, and/or information stored in non-volatile memory, or protected by a battery backup, shall not be lost.

Product Specific Performance Criteria

The particular performance criteria which are specified in the normative annexes of EN 55035 take precedence over the corresponding parts of the general performance criteria. Where particular performance criteria for specific functions are not given, then the general performance criteria shall apply.

8 Electrostatic Discharge Immunity Test (ESD)

8.1 Test Specification

Product Standard:	EN 55024
Basic Standard:	EN/IEC 61000-4-2
Discharge Impedance:	330 ohm / 150 pF
Discharge Voltage:	Air Discharge: $\pm 2, \pm 4, \pm 8$ kV (Direct) Contact Discharge: $\pm 2, \pm 4, \pm 6$ kV (Indirect/ Direct)
Number of Discharge:	Air – Direct: 10 discharges per location (each polarity) Contact – Direct & Indirect: 25 discharges per location (each polarity) and min. 200 times in total
Discharge Mode:	Single Discharge
Discharge Period:	1-second minimum

Product Standard:	EN 55035
Basic Standard:	EN/IEC 61000-4-2
Discharge Impedance:	330 ohm / 150 pF
Discharge Voltage:	Air Discharge: $\pm 2, \pm 4, \pm 8$ kV (Direct) Contact Discharge: $\pm 2, \pm 4, \pm 6$ kV (Indirect/ Direct)
Number of Discharge:	Air – Direct: 10 discharges per location (each polarity) Contact – Direct & Indirect: 10 discharges per location (each polarity)
Discharge Mode:	Single Discharge
Discharge Period:	1-second minimum

8.2 Test Instruments

Description & Manufacturer	Model No.	Serial No.	Cal. Date	Cal. Due
KeyTek, ESD Simulator	MZ-15/EC	0504259	Nov. 8, 2019	Nov. 7, 2020

Note: 1. The calibration interval of the above test instruments is 12 months and the calibrations are traceable to NML/ROC and NIST/USA.
2. The test was performed in ESD Room No. 1.
3. Tested Date: May 22, 2020

8.3 Test Arrangement

The discharges shall be applied in two ways: (For EN 55024 only)

- a. Contact discharges to the conductive surfaces and coupling planes:

The EUT shall be exposed to at least 200 discharges, 100 each at negative and positive polarity, at a minimum of four test points. One of the test points shall be subjected to at least 50 indirect discharges to the center of the front edge of the horizontal coupling plane. The remaining three test points shall each receive at least 50 direct contact discharges. If no direct contact test points are available, then at least 200 indirect discharges shall be applied in the indirect mode. Test shall be performed at a maximum repetition rate of one discharge per second.

b. Air discharges at slots and apertures and insulating surfaces:

On those parts of the EUT where it is not possible to perform contact discharge testing, the equipment should be investigated to identify user accessible points where breakdown may occur. Such points are tested using the air discharge method. This investigation should be restricted to those area normally handled by the user. A minimum of 10 single air discharges shall be applied to the selected test point for each such area.

The basic test procedure was in accordance with EN/IEC 61000-4-2:

- a. Electrostatic discharges were applied only to those points and surfaces of the EUT that are accessible to users during normal operation.
- b. The test was performed with at least ten single discharges on the pre-selected points in the most sensitive polarity.
- c. The time interval between two successive single discharges was at least 1 second.
- d. The ESD generator was held perpendicularly to the surface to which the discharge was applied and the return cable was at least 0.2 meters from the EUT.
- e. Contact discharges were applied to the non-insulating coating, with the pointed tip of the generator penetrating the coating and contacting the conducting substrate.
- f. Air discharges were applied with the round discharge tip of the discharge electrode approaching the EUT as fast as possible (without causing mechanical damage) to touch the EUT. After each discharge, the ESD generator was removed from the EUT and re-triggered for a new single discharge. The test was repeated until all discharges were complete.
- g. At least ten single discharges (in the most sensitive polarity) were applied to the **Horizontal Coupling Plane** at points on each side of the EUT. The ESD generator was positioned at a distance of 0.1 meters from the EUT with the discharge electrode touching the **HCP**.
- h. At least ten single discharges (in the most sensitive polarity) were applied to the center of one vertical edge of the **Vertical Coupling Plane** in sufficiently different positions that the four faces of the EUT were completely illuminated. The **VCP** (dimensions 0.5m x 0.5m) was placed vertically to and 0.1 meters from the EUT.

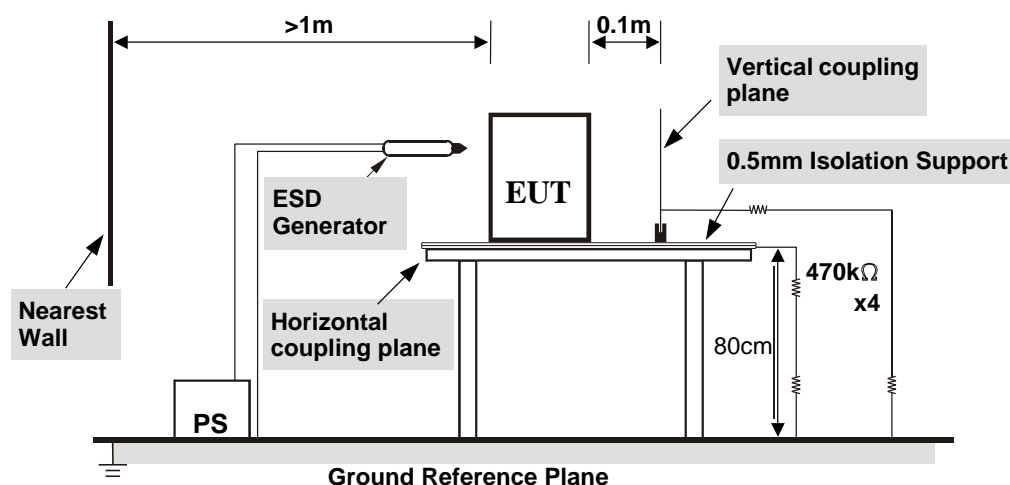


TABLE-TOP EQUIPMENT

The configuration consisted of a wooden table 0.8 meters high standing on the **Ground Reference Plane**. The **GRP** consisted of a sheet of aluminum at least 0.25mm thick, and 2.5 meters square connected to the protective grounding system. A **Horizontal Coupling Plane** (1.6m x 0.8m) was placed on the table and attached to the **GRP** by means of a cable with 940kΩ total impedance. The equipment under test, was installed in a representative system as described in section 7 of EN/IEC 61000-4-2, and its cables were placed on the **HCP** and isolated by an insulating support of 0.5mm thickness. A distance of 1-meter minimum was provided between the EUT and the walls of the laboratory and any other metallic structure.

For the actual test configuration, please refer to the related item – Photographs of the Test Configuration.

8.4 Supplementary Information

The requirement followed by the client's specification. (Refer to item 7.1)

8.5 Test Results

For EN 55024 & EN 55035

Test mode	Mode 1 & Mode 2	Input Voltage	48Vdc
Environmental Conditions	23 °C, 43% RH 999mbar	Tested by	Sean Chou

Test Results of Direct Application					
Discharge Level (kV)	Polarity (+/-)	Test Point	Contact Discharge	Air Discharge	Performance Criterion
2, 4, 6	+/-	1	Note	NA	A
2, 4, 8	+/-	2	NA	Note	A

Description of test points of direct application: Please refer to following page for representative mark only.

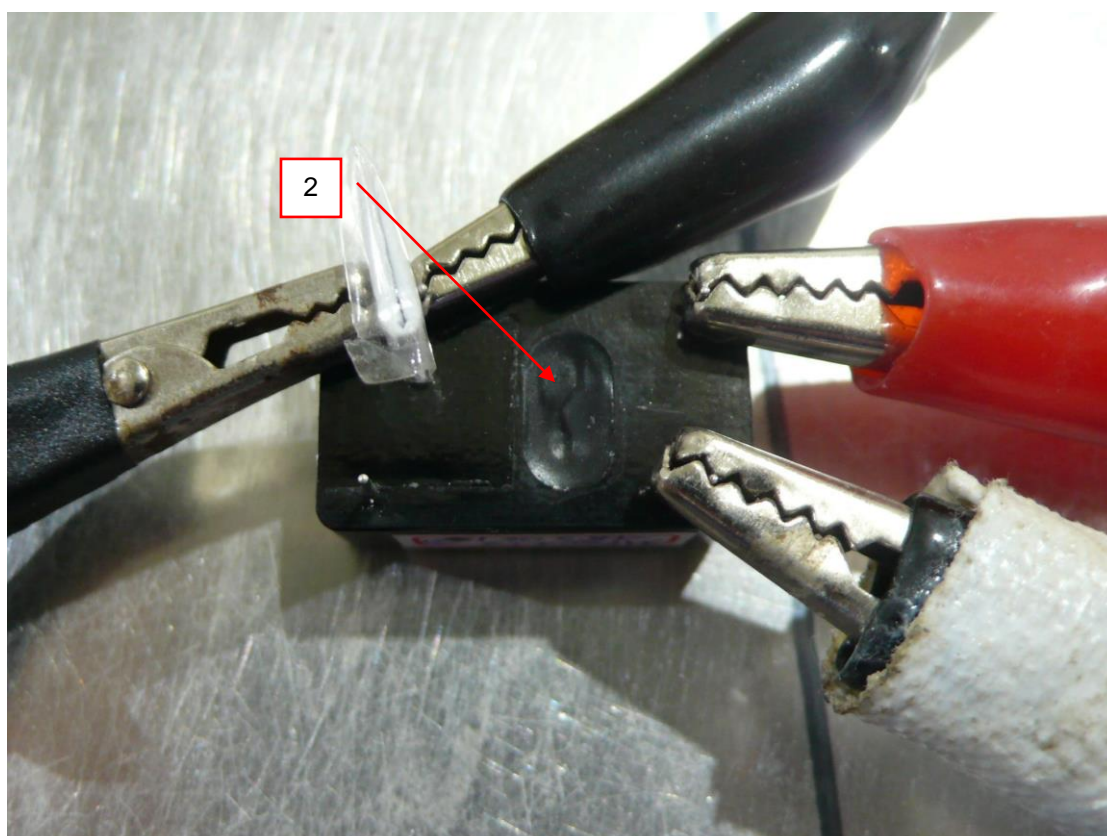
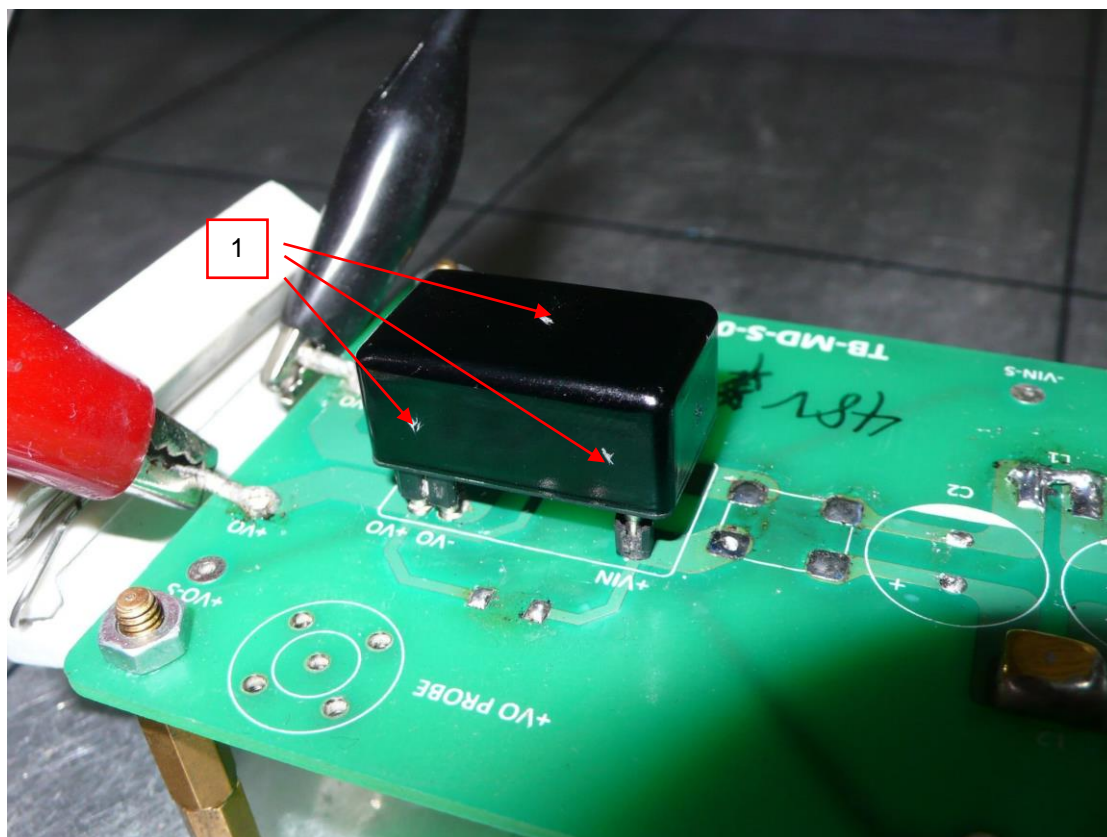
Test Results of Indirect Application					
Discharge Level (kV)	Polarity (+/-)	Test Point	Horizontal Coupling Plane	Vertical Coupling Plane	Performance Criterion
2, 4, 6	+/-	Four Sides	Note	Note	A

Description of test points of indirect application:

1. Front side
2. Rear side
3. Right side
4. Left side

Note: The EUT function was correct during the test.

Description of Test Points



9 Radiated, Radio-frequency, Electromagnetic Field Immunity Test (RS)

9.1 Test Specification

Product Standard:	EN 55024
Basic Standard:	EN/IEC 61000-4-3
Frequency Range:	80 MHz - 1000 MHz
Field Strength:	3 V/m, 20 V/m,
Modulation:	1kHz Sine Wave, 80%, AM Modulation
Frequency Step:	1 % of preceding frequency value
Polarity of Antenna:	Horizontal and Vertical
Antenna Height:	1.5m
Dwell Time:	3 seconds

Product Standard:	EN 55035
Basic Standard:	EN/IEC 61000-4-3
Swept Frequency Range:	80 MHz - 1000 MHz
Spot Frequencies:	1800, 2600, 3500, 5000 MHz (± 1 %)
Field Strength:	3 V/m, 20 V/m
Modulation:	1kHz Sine Wave, 80%, AM Modulation
Frequency Step:	1 % of preceding frequency value
Polarity of Antenna:	Horizontal and Vertical
Antenna Height:	1.5m
Dwell Time:	3 seconds

9.2 Test Instruments

Description & Manufacturer	Model No.	Serial No.	Cal. Date	Cal. Due
AgilentSignal Generator	E8257D	MY48050465	Jun. 7, 2019	Jun. 6, 2020
BONN RF Amplifier	BSA 0125-800	1912556	NA	NA
TESTQAmplifier	CBA 1G-275	T44344	NA	NA
AR RF Amplifier	35S4G8AM4	0326094	NA	NA
AR RF Amplifier	100S1G4M3	0329249	NA	NA
AR Controller	SC1000M3	305910	NA	NA
ETS Electric Field Sensor	HI-6105	00217912	Aug. 13, 2019	Aug. 12, 2020
BOONTON RF Voltage Meter	4232A	10180	May 29, 2019	May 28, 2020
BOONTON Power Sensor	51011-EMC	34152	May 29, 2019	May 28, 2020
BOONTON Power Sensor	51011-EMC	34153	May 29, 2019	May 28, 2020
ARLog-Periodic Antenna	AT6080	0329465	NA	NA
EMCO BiconiLog Antenna	3141	1001	NA	NA
ARHigh Gain Antenna	AT4010	0329800	NA	NA
SchwarzbeckLOG ANTENNA	Stlp 9149	9149-260	NA	NA
CHANCE MOST Full Anechoic Chamber (9x5x3m)	Chance Most	RS-002	Feb. 5, 2020	Feb. 4, 2021
Software	RS_V7.6	NA	NA	NA

Note: 1. The calibration interval of the above test instruments is 12 months and the calibrations are traceable to NML/ROC and NIST/USA.
2. The test was performed in RS Room No.2.
3. The transmit antenna was located at a distance of 3 / 1.5 meters from the EUT.
4. Tested Date: May 4, 2020

9.3 Test Arrangement

The test procedure was in accordance with EN/IEC 61000-4-3.

- The testing was performed in a fully anechoic chamber.
- The frequency range is swept from 80 MHz to 1000 MHz, with the signal 80% amplitude modulated with a 1kHz sine wave. **(For EN 55024)**
- The swept frequency range is from 80 MHz to 1000 MHz and the spot frequencies are 1800, 2600, 3500, 5000 MHz ($\pm 1\%$), with the signal 80% amplitude modulated with a 1kHz sine wave. **(For EN 55035)**
- The dwell time of the amplitude modulated carrier was applied in 3 s at each of the frequencies during the scan. The sensitive frequencies (e.g. clock frequencies or frequencies identified by the manufacturer or obtained as outcome of the test) shall be analyzed in addition to the stepped frequencies. **(For EN 55035)**
- The field strength level was 3 V/m, 20 V/m.
- The test was performed with the EUT exposed to both vertically and horizontally polarized fields on each of the four sides.

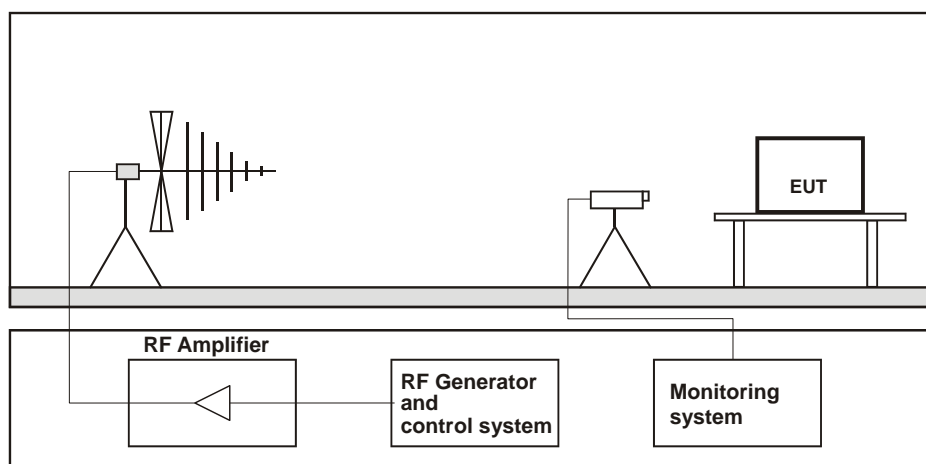


Table-top Equipment

The EUT installed in a representative system as described in section 7 of EN/IEC 61000-4-3 was placed on a non-conductive table 0.8 meters in height. The system under test was connected to the power and signal wire according to relevant installation instructions.

For the actual test configuration, please refer to the related item – Photographs of the Test Configuration.

9.4 Supplementary Information

The requirement followed by the client's specification. (Refer to item 7.1)

9.5 Test Results

For EN 55024

Test mode	Mode 1 & Mode 2	Input Voltage	48Vdc
Environmental Conditions	23°C, 68% RH	Tested by	Josh Lin

Frequency (MHz)	Polarity	Azimuth (°)	Test Distance (m)	Applied Field Strength		Observation	Performance Criterion
				(V/m)	Modulation		
80 -1000	V&H	0	3	3	80% AM (1kHz)	Note	A
80 -1000	V&H	90	3	3	80% AM (1kHz)	Note	A
80 -1000	V&H	180	3	3	80% AM (1kHz)	Note	A
80 -1000	V&H	270	3	3	80% AM (1kHz)	Note	A
80 -1000	V&H	0	1.5	20	80% AM (1kHz)	Note	A
80 -1000	V&H	90	1.5	20	80% AM (1kHz)	Note	A
80 -1000	V&H	180	1.5	20	80% AM (1kHz)	Note	A
80 -1000	V&H	270	1.5	20	80% AM (1kHz)	Note	A

Note: The EUT function was correct during the test.

For EN 55035

Test mode	Mode 1 & Mode 2	Input Voltage	48Vdc
Environmental Conditions	23°C, 68% RH	Tested by	Josh Lin

Frequency (MHz)	Polarity	Azimuth(°)	Test Distance (m)	Applied Field Strength		Observation	Performance Criterion
				(V/m)	Modulation		
80 - 1000	V&H	0	3	3	80% AM (1kHz)	Note	A
		90	3	3	80% AM (1kHz)	Note	A
		180	3	3	80% AM (1kHz)	Note	A
		270	3	3	80% AM (1kHz)	Note	A
1800, 2600, 3500, 5000 MHz (±1 %)	V&H	0	3	3	80% AM (1kHz)	Note	A
		90	3	3	80% AM (1kHz)	Note	A
		180	3	3	80% AM (1kHz)	Note	A
		270	3	3	80% AM (1kHz)	Note	A
80 - 1000	V&H	0	1.5	20	80% AM (1kHz)	Note	A
		90	1.5	20	80% AM (1kHz)	Note	A
		180	1.5	20	80% AM (1kHz)	Note	A
		270	1.5	20	80% AM (1kHz)	Note	A
1800, 2600, 3500, 5000 MHz (±1 %)	V&H	0	1.5	20	80% AM (1kHz)	Note	A
		90	1.5	20	80% AM (1kHz)	Note	A
		180	1.5	20	80% AM (1kHz)	Note	A
		270	1.5	20	80% AM (1kHz)	Note	A

Note: The EUT function was correct during the test.

10 Electrical Fast Transient/Burst Immunity Test (EFT) <with external components according to total solution (3.6)>

10.1 Test Specification

Product Standard:	EN 55024
Basic Standard:	EN/IEC 61000-4-4
Test Voltage:	Signal / telecommunication port: N/A Input DC power port: $\pm 0.5\text{kV}$, $\pm 2\text{kV}$ Input AC power port: N/A
Impulse Repetition Frequency:	xDSL telecommunication port: 100kHz others: 5kHz
Impulse Wave Shape:	5/50 ns
Burst Duration:	0.75 ms for 100kHz Repetition Frequency 15 ms for 5kHz Repetition Frequency
Burst Period:	300 ms
Test Duration:	1 min.

Product Standard:	EN 55035
Basic Standard:	EN/IEC 61000-4-4
Test Voltage:	Analogue/digital data port (cable length > 3m): N/A DC network power port (cable length > 3m): $\pm 0.5\text{kV}$, $\pm 2\text{kV}$ AC mains power port: N/A
Impulse Repetition Frequency:	100kHz : applicable only to xDSL port 5kHz : others
Impulse Wave Shape :	5/50 ns
Burst Duration:	0.75 ms for 100kHz Repetition Frequency 15 ms for 5kHz Repetition Frequency,
Burst Period:	300 ms
Test Duration:	1 min.

10.2 Test Instruments

Description & Manufacturer	Model No.	Serial No.	Cal. Date	Cal. Due
TESEQ, EFT Simulator	NSG 3060	1572	May 22, 2019	May 21, 2020
TESEQ, CDN	CDN 3083-B100	303	May 22, 2019	May 21, 2020
Haefely, Capacitive Clamp	IP4A	155173	Apr. 20, 2020	Apr. 19, 2021

Note:

1. The calibration interval of the above test instruments is 12 months and the calibrations are traceable to NML/ROC and NIST/USA.
2. The test was performed in EMS Room No. 2.
3. Tested Date: Apr. 30, 2020

10.5 Test Results

For EN 55024 & EN 55035

Test mode	Mode 1 & Mode 4	Input Voltage	12Vdc
Environmental Conditions	22°C, 82% RH	Tested by	Josh Lin

Input DC power port

Voltage (kV)	Test Point	Polarity (+/-)	Observation	Performance Criterion
0.5, 2	(+)	+/-	Note	A
0.5, 2	(-)	+/-	Note	A
0.5, 2	(+)-(-)	+/-	Note	A

Note: The EUT function was correct during the test.

Test mode	Mode 2 & Mode 5 & Mode 6 & Mode 7 & Mode 9	Input Voltage	24Vdc
Environmental Conditions	22°C, 82% RH	Tested by	Josh Lin

Input DC power port

Voltage (kV)	Test Point	Polarity (+/-)	Observation	Performance Criterion
0.5, 2	(+)	+/-	Note	A
0.5, 2	(-)	+/-	Note	A
0.5, 2	(+)-(-)	+/-	Note	A

Note: The EUT function was correct during the test.

Test mode	Mode 3 & Mode 8 & Mode 10	Input Voltage	48Vdc
Environmental Conditions	22°C, 82% RH	Tested by	Josh Lin

Input DC power port

Voltage (kV)	Test Point	Polarity (+/-)	Observation	Performance Criterion
0.5, 2	(+)	+/-	Note	A
0.5, 2	(-)	+/-	Note	A
0.5, 2	(+)-(-)	+/-	Note	A

Note: The EUT function was correct during the test.

11 Surge Immunity Test <with external components according to total solution (3.6)>

11.1 Test Specification

Product Standard:	EN 55024
Basic Standard:	EN/IEC 61000-4-5
Wave-Shape:	Signal / telecommunication port (direct to outdoor cables*): 10/700 μ s Open Circuit Voltage 5/320 μ s Short Circuit Current Input DC power port (direct to outdoor cables*): 1.2/50 μ s Open Circuit Voltage 8/20 μ s Short Circuit Current Input AC power port: 1.2/50 μ s Open Circuit Voltage 8/20 μ s Short Circuit Current
Test Voltage:	Signal and telecommunication ports**: w/o primary protectors: N/A with primary protectors fitted: N/A Input DC power port: Line to earth or ground: ± 0.5 kV, ± 1 kV, ± 2 kV Input AC power ports: Line to line: N/A Line to earth or ground: N/A
AC Phase Angle (degree):	0°, 90°, 180°, 270°
Pulse Repetition Rate:	1 time / 20 sec.
Number of Tests:	5 positive and 5 negative at selected points

* This test is only applicable only to ports, which according to the manufacturer's specification, may connect directly to outdoor cables.

** For ports where primary protection is intended, surges are applied at voltages up to 4 kV with the primary protectors fitted. Otherwise the 1 kV test level is applied without primary protection in place.

Product Standard:	EN 55035
Basic Standard:	EN/IEC 61000-4-5
Wave-Shape:	Analogue/digital data ports (direct to outdoor cables*): Port type: unshielded symmetrical 10/700 μ s Open Circuit Voltage 5/320 μ s Short Circuit Current Port type: coaxial or shielded 1.2/50 μ s Open Circuit Voltage 8/20 μ s Short Circuit Current DC network power port (direct to outdoor cables*): 1.2/50 μ s Open Circuit Voltage 8/20 μ s Short Circuit Current AC mains power port: 1.2/50 μ s Open Circuit Voltage 8/20 μ s Short Circuit Current
Test Voltage:	Analogue/digital data ports: Port type: unshielded symmetrical** w/o primary protectors (line to ground): N/A with primary protectors (line to ground): N/A Port type: coaxial or shielded shield to ground: N/A DC network power port: ± 0.5 kV, ± 1 kV, ± 2 kV AC mains power ports: Line to line : N/A Line to ground : N/A
AC Phase Angle (degree):	90° / 270°
Pulse Repetition Rate:	1 time / 20 sec.
Number of Tests:	5 positive and 5 negative at selected points

* This test is only applicable only to ports, which according to the manufacturer's specification, may connect directly to outdoor cables.

** For ports where primary protection is intended, surges are applied at voltages up to 4 kV with the primary protectors. Otherwise the 1 kV test level is applied without primary protection in place.

11.2 Test Instruments

Description & Manufacturer	Model No.	Serial No.	Cal. Date	Cal. Due
TESEQ, Surge Simulator	NSG 3060	1572	May 22, 2019	May 21, 2020
TESEQ, CDN	CDN 3083-100	1215	May 22, 2019	May 21, 2020
Coupling Decoupling Network	CDN-UTP8	045	Aug. 27, 2019	Aug. 26, 2020
TESEQ Coupling Decoupling Network	CDN HSS-2	41009	May 22, 2019	May 21, 2020
TESEQ Coupling Decoupling Network	CDN 118-T8	40386	Sep. 12, 2019	Sep. 11, 2020
TESEQ CDN for Unshielded Unsymmetrical Signal & Data Lines	CDN117	40144	Sep. 12, 2019	Sep. 11, 2020

Note: 1. The calibration interval of the above test instruments is 12 months and the calibrations are traceable to NML/ROC and NIST/USA.
2. The test was performed in EMS Room No. 2.
3. Tested Date: Apr. 30, 2020

11.3 Test Arrangement

a. EUT Power ports:

The surge shall be applied to the EUT power supply terminals via the capacitive coupling network. Decoupling networks are required in order to avoid possible adverse effects on equipment not under test that may be powered by the same lines and to provide sufficient decoupling impedance to the surge wave. The power cord between the EUT and the coupling network shall not exceed 2 meters in length.

For double-insulated products without PE or external earth connections, the test shall be done in a similar way as for grounded products but without adding any additional external grounded connections. If there are no other possible connections to earth, line-to-ground tests may be omitted.

b. Analogue/digital data ports:

- Unshielded unsymmetrical interconnection lines:

The coupling / decoupling networks shall not influence the specified functional conditions of the EUT. The interconnection line between the EUT and the coupling network shall not exceed 2 meters in length.

- Unshielded symmetrical interconnection lines:

For symmetrical interconnection lines and high-speed interconnection lines, the CDN shall be selected to match the number of lines/pairs existing in the cable. If coupling arrestors are used, test levels below the ignition point of the coupling arrestor cannot be specified.

The interconnection line between the EUT and the coupling/decoupling networks shall not exceed 2 meters in length.

In order to avoid the coupling and decoupling capacitors having a filtering effect on the data transfer, a balanced high frequency design associating the coupling capacitors with coupling chokes is required. Where normal functioning of high speed communications lines cannot be achieved because of the impact of the CDN on the EUT, product committees should specify appropriate operation or that no surge immunity test is required.

- Shielded lines:

The EUT is isolated from ground and the surge is applied to its metallic enclosure; the termination (or auxiliary equipment) at the port(s) under test is grounded. This test applies to equipment with one or more shielded cables.

The length of the cable between the port(s) under test and the device attached to the other end of the cable shall be:

- 20 m (preferred length) or,
- the shortest length over 10 m, where the manufacturer provides pre-assembled cables used in actual installations.

No test shall be required for cables which according to the manufacturer's specification are ≤ 10 m.

Rules for application of the surge to shielded lines:

a) Shields grounded at both ends:

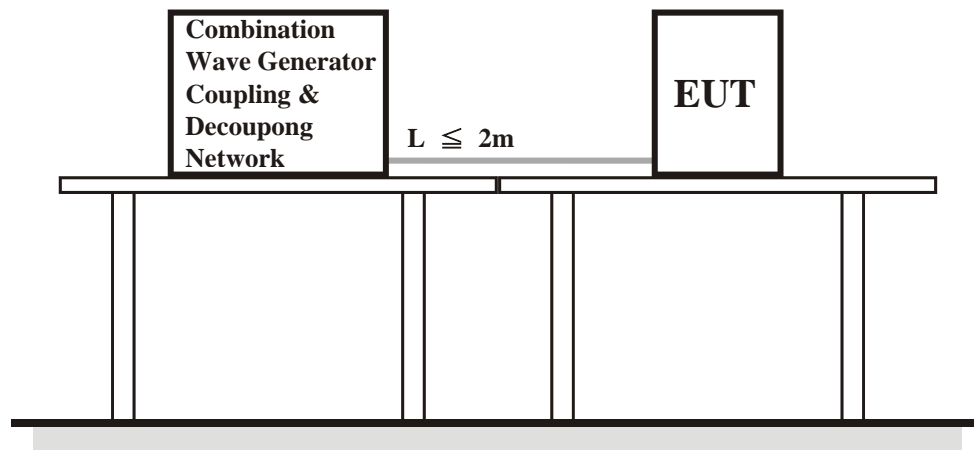
- the test shall be carried out.

The test level is applied on shields with a 2Ω generator source impedance and with the $18 \mu\text{F}$ capacitor.

b) Shields grounded at one end:

- the test shall be carried out according to unshielded unsymmetrical interconnection lines or unshielded symmetrical interconnection lines because the shield does not provide any protection against surges induced by magnetic fields.

For EUTs which do not have metallic enclosures, the surge is applied directly to the shielded cable at the EUT side.



For the actual test configuration, please refer to the related item – Photographs of the Test Configuration.

11.4 Supplementary Information

The requirement followed by the client's specification. (Refer to item 7.1)

11.5 Test Results

For EN 55024 & EN 55035

Test mode	Mode 1 & Mode 4	Input Voltage	12Vdc
Environmental Conditions	22°C, 82% RH	Tested by	Josh Lin

Input DC power port

Voltage (kV)	Test Point	Polarity (+/-)	Observation	Performance Criterion
0.5, 1, 2	(+)-(-)	+/-	Note	A

Note: The EUT function was correct during the test.

Test mode	Mode 2 & Mode 5 & Mode 6 & Mode 7 & Mode 9	Input Voltage	24Vdc
Environmental Conditions	22°C, 82% RH	Tested by	Josh Lin

Input DC power port

Voltage (kV)	Test Point	Polarity (+/-)	Observation	Performance Criterion
0.5, 1, 2	(+)-(-)	+/-	Note	A

Note: The EUT function was correct during the test.

Test mode	Mode 3 & Mode 8 & Mode 10	Input Voltage	48Vdc
Environmental Conditions	22°C, 82% RH	Tested by	Josh Lin

Input DC power port

Voltage (kV)	Test Point	Polarity (+/-)	Observation	Performance Criterion
0.5, 1, 2	(+)-(-)	+/-	Note	A

Note: The EUT function was correct during the test.

12 Immunity to Conducted Disturbances Induced by RF Fields (CS)

12.1 Test Specification

Product Standard:	EN 55024
Basic Standard:	EN/IEC 61000-4-6
Frequency Range:	0.15 MHz - 80 MHz
Voltage Level:	3 V, 10 V
Modulation:	1kHz Sine Wave, 80%, AM Modulation
Frequency Step:	1 % of preceding frequency value
Dwell Time	3 seconds

Product Standard:	EN 55035
Basic Standard:	EN/IEC 61000-4-6
Frequency Range:	0.15 MHz - 80 MHz
Voltage Level:	0.15 MHz - 80 MHz: 10V 0.15 MHz - 10 MHz: 3V 10 MHz - 30 MHz: 3-1 V 30 MHz - 80 MHz: 1V
Additional Test:	0.15 MHz - 80 MHz: 10V
Modulation:	1kHz Sine Wave, 80%, AM Modulation
Frequency Step:	1 % of preceding frequency value
Dwell Time	3 seconds

12.2 Test Instruments

Description & Manufacturer	Model No.	Serial No.	Cal. Date	Cal. Due
ROHDE & SCHWARZ Signal Generator	SML03	101801	Jan. 17, 2020	Jan. 16, 2021
Digital Sweep Function Generator	8120	984801	NA	NA
AR Power Amplifier	75A250AM1	306331	NA	NA
FCC Coupling Decoupling Network	FCC-801-M2-16A	01047	Jun. 19, 2019	Jun. 18, 2020
FISCHER CUSTOM COMMUNICATIONS EM Injection Clamp	F-203I-23mm	455	NA	NA
FISCHER CUSTOM COMMUNICATIONS Current Injection Clamp	F-120-9A	361	Jul. 31, 2019	Jul. 30, 2020
B&K Ear Simulator	4185	2553594	NA	NA
EM TEST Coupling Decoupling Network	CDN M1/32A	306508	Jun. 19, 2019	Jun. 18, 2020
TESEQ Coupling Decoupling Network	CDN T800	34428	Jun. 19, 2019	Jun. 18, 2020
TESEQ Coupling Decoupling Network	CDN T800	29459	Jun. 19, 2019	Jun. 18, 2020
TESEQ Coupling Decoupling Network	CDN T8-230	56641	Feb. 26, 2020	Feb. 25, 2021
TESEQ Coupling Decoupling Network	CDN T8-230	56642	Feb. 26, 2020	Feb. 25, 2021
R&S Power Sensor	NRV-Z5	837878/039	Nov. 8, 2019	Nov. 7, 2020
R&S Power Meter	NRVD	837794/040	Nov. 8, 2019	Nov. 7, 2020
TESEQ Coupling Decoupling Network	CDN M232	37702	Jun. 19, 2019	Jun. 18, 2020
TESEQ Coupling Decoupling Network	CDN M332	41258	Jun. 19, 2019	Jun. 18, 2020
TESEQ Coupling Decoupling Network	CDN M332	41256	Jun. 19, 2019	Jun. 18, 2020
TESEQ Coupling Decoupling Network	CDN T8-10	40376	Jun. 19, 2019	Jun. 18, 2020
TESEQ Coupling Decoupling Network	CDN T8-230	56643	Feb. 26, 2020	Feb. 25, 2021
TESEQ Coupling Decoupling Network	CDN S200	53490	May 28, 2019	May 27, 2020
TESEQ Coupling Decoupling Network	CDN S400	52115	Jul. 23, 2019	Jul. 22, 2020
TESEQ Coupling Decoupling Network	CDN T400A	49918	Feb. 26, 2020	Feb. 25, 2021
FCC Coupling Decoupling Network	FCC-801-M5-50A	100018	Jan. 20, 2020	Jan. 19, 2021
TESEQ Coupling Decoupling Network	CDN T2A-10	54942	Feb. 26, 2020	Feb. 25, 2021
TESEQ Coupling Decoupling Network	CDN S751A	56435	Feb. 26, 2020	Feb. 25, 2021
TESEQ Coupling Decoupling Network	CDN ST08A	56527	Feb. 26, 2020	Feb. 25, 2021
TESEQ Coupling Decoupling Network	CDN ST08A	56525	Feb. 26, 2020	Feb. 25, 2021
TESEQ Coupling Decoupling Network	CDN M432S	56519	Feb. 26, 2020	Feb. 25, 2021
TESEQ Coupling Decoupling Network	CDN S751A	56436	Apr. 13, 2020	Apr. 12, 2021
Software	CS_V7.4.2	NA	NA	NA

Note: 1. The calibration interval of the above test instruments is 12 months and the calibrations are traceable to NML/ROC and NIST/USA.
 2. The test was performed in CS Room No. 1.
 3. Tested Date: May 4, 2020

12.5 Test Results

For EN 55024

Test mode	Mode 1 & Mode 2	Input Voltage	48Vdc
Environmental Conditions	22 °C, 72% RH	Tested by	Josh Lin

Frequency (MHz)	Level (Vrms)	Tested Line	Injection Method	Return Path	Observation	Performance Criterion
0.15 – 80	3, 10	DC power	CDN-M2	N/A	Note	A

Note: The EUT function was correct during the test.

For EN 55035

Test mode	Mode 1 & Mode 2	Input Voltage	48Vdc
Environmental Conditions	22 °C, 72% RH	Tested by	Josh Lin

Frequency (MHz)	Level (Vrms)	Tested Line	Injection Method	Return Path	Observation	Performance Criterion
0.15 – 10	3	DC power	CDN-M2	N/A	Note	A
10 – 30	3 – 1	DC power	CDN-M2	N/A	Note	A
30 – 80	1	DC power	CDN-M2	N/A	Note	A
0.15 – 80	10	DC power	CDN-M2	N/A	Note	A

Note: The EUT function was correct during the test.

13 Power Frequency Magnetic Field Immunity Test

13.1 Test Specification

Product Standard:	EN 55024
Basic Standard:	EN/IEC 61000-4-8
Frequency Range:	50Hz
Field Strength:	1A/m, 100A/m, 1000A/m
Observation Time:	1 minute for Field Strength 1A/m, 100A/m 1 second for Field Strength 1000A/m
Inductance Coil:	Rectangular type, 1 m x 1 m

Product Standard:	EN 55035
Basic Standard:	EN/IEC 61000-4-8
Frequency Range:	50Hz
Field Strength:	1A/m, 100A/m, 1000A/m
Observation Time:	1 minute for Field Strength 1A/m, 100A/m 1 second for Field Strength 1000A/m
Inductance Coil:	Rectangular type, 1 m x 1 m

13.2 Test Instruments

For Field Strength: 1A/m

Description & Manufacturer	Model No.	Serial No.	Cal. Date	Cal. Due
HAEFELY Magnetic Field Tester	MAG 100	083794-06	NA	NA

- Note:
1. The calibration interval of the above test instruments is 12 months and the calibrations are traceable to NML/ROC and NIST/USA.
 2. The test was performed in EMS Room No. 1
 3. Tested Date: May 4, 2020

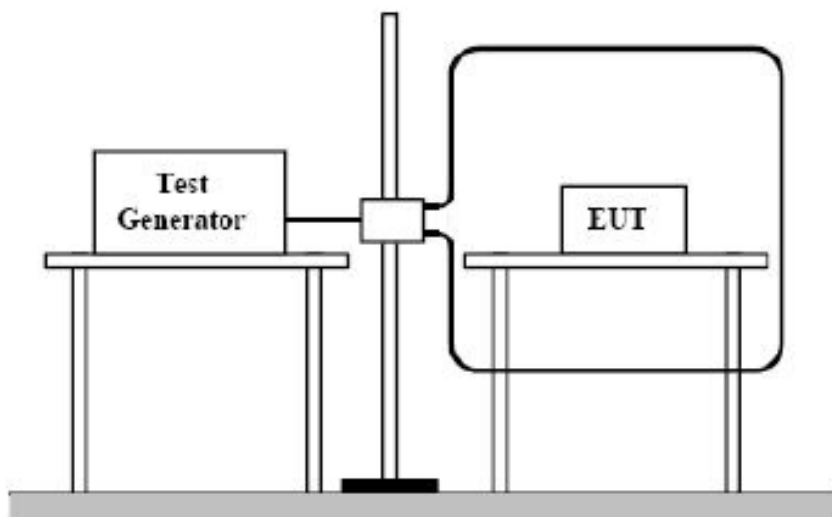
For Field Strength: 100A/m, 1000A/m

Description & Manufacturer	Model No.	Serial No.	Cal. Date	Cal. Due
Triaxial Elf Magnetic Field Meter BELL	4090	NA	Apr. 10, 2020	Apr. 09, 2021
Power frequency magnetic filed coil 3ctest	TCX30	EC1281401	Apr. 22, 2020	Apr. 21, 2021
Power frequency magnetic filed generator 3ctest	PFMF-1200G	EC0111401	Apr. 22, 2020	Apr. 21, 2021

- Notes:
1. The calibration interval of the above test instruments is 12 months and the calibrations are traceable to NML/ROC and NIST/USA.
 2. The test was performed in EMS-1 room. (TAF No.: 2022)
 3. Tested Date: May 14, 2020

13.3 Test Arrangement

- The equipment is configured and connected to satisfy its functional requirements.
- The power supply, input and output circuits shall be connected to the sources of power supply, control and signal.
- The cables supplied or recommended by the equipment manufacturer shall be used. 1 meter of all cables used shall be exposed to the magnetic field.



TABLETOP EQUIPMENT

The equipment shall be subjected to the test magnetic field by using the induction coil of standard dimension (1 m x 1 m). The induction coil shall then be rotated by 90 degrees in order to expose the EUT to the test field with different orientations.

For the actual test configuration, please refer to the related item – Photographs of the Test Configuration.

13.4 Supplementary Information

The requirement followed by the client's specification. (Refer to item 7.1)

13.5 Test Results

For EN 55024 & EN 55035

Test mode	Mode 1 & Mode 2	Input Voltage	48Vdc
Environmental Conditions	24°C, 83% RH	Tested by	Josh Lin

Field Strength: 1A/m					
Application	Frequency (Hz)	Test Duration	Field Strength (A/m)	Observation	Performance Criterion
X - Axis	50	1 min.	1	Note	A
Y - Axis	50	1 min.	1	Note	A
Z - Axis	50	1 min.	1	Note	A

Note: The EUT function was correct during the test.

For EN 55024 & EN 55035

Test mode	Mode 1 & Mode 2	Input Voltage	48Vdc
Environmental Conditions	22°C, 67% RH	Tested by	Vito Lung

Field Strength: 100A/m, 1000A/m					
Application	Frequency (Hz)	Test Duration	Field Strength (A/m)	Observation	Performance Criterion
X - Axis	50	1 min.	100	Note	A
Y - Axis	50	1 min.	100	Note	A
Z - Axis	50	1 min.	100	Note	A
X - Axis	50	1 sec.	1000	Note	A
Y - Axis	50	1 sec.	1000	Note	A
Z - Axis	50	1 sec.	1000	Note	A

Note: The EUT function was correct during the test.

Remark: The test, calibration and test results are compliance with the TAF (TAF code: 2022).

14 Pictures of Test Arrangements

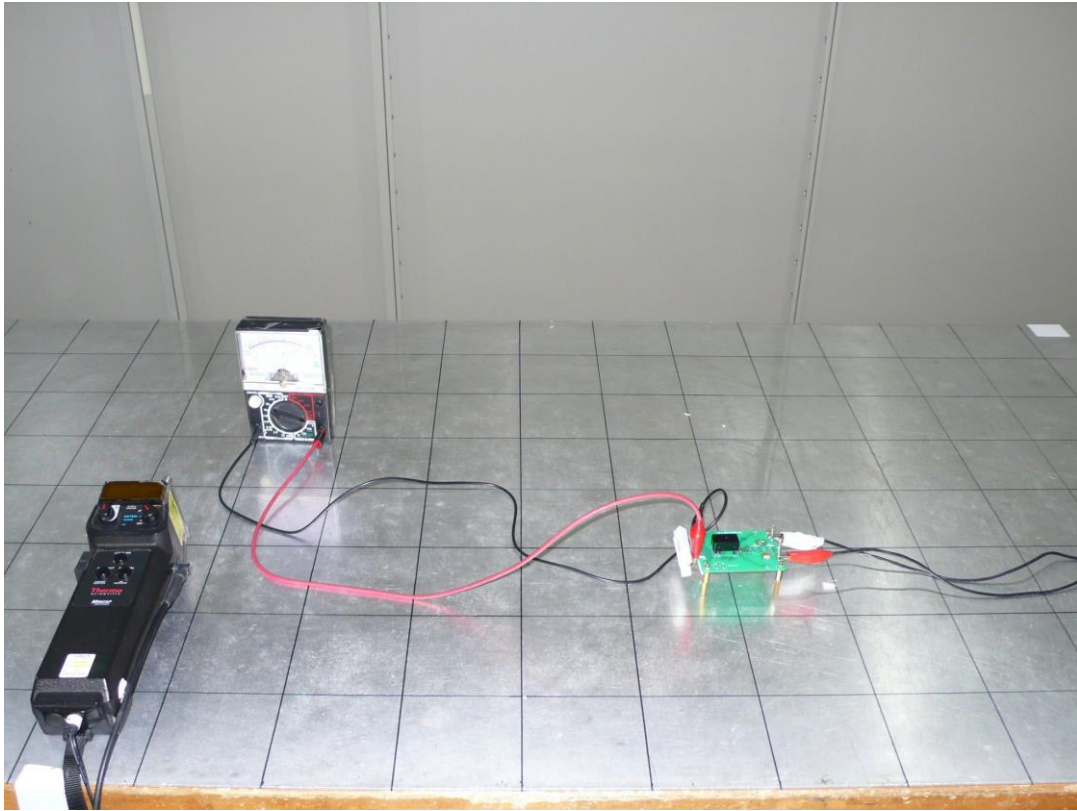
14.1 Conducted Emission from the Mains Power Port



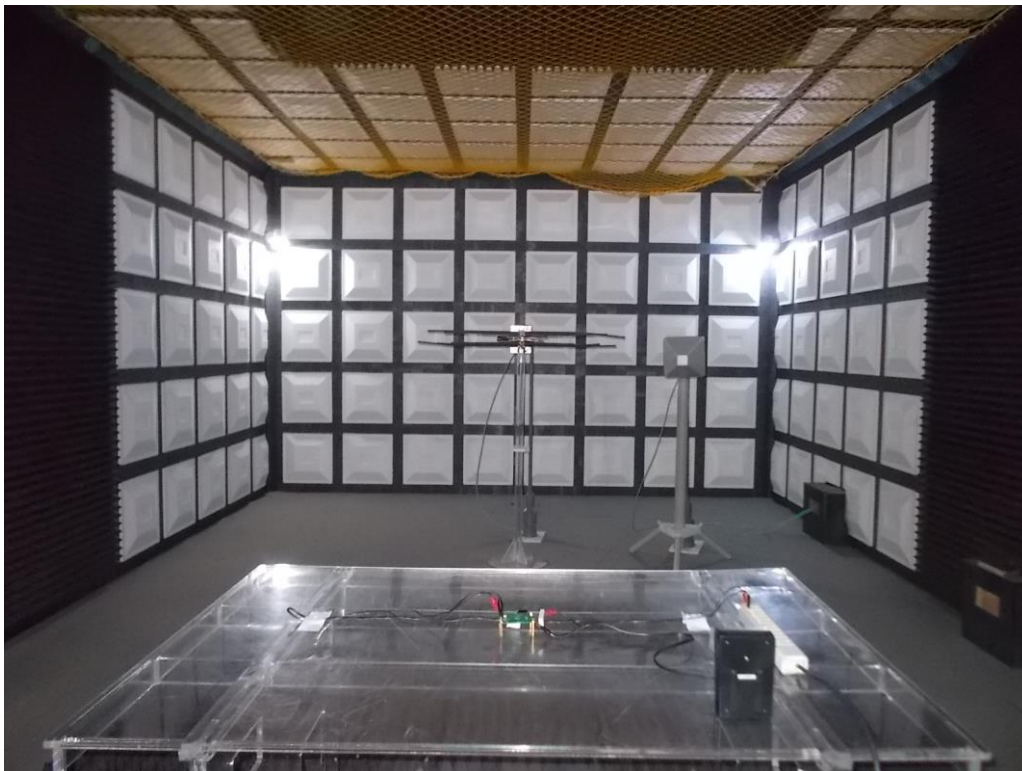
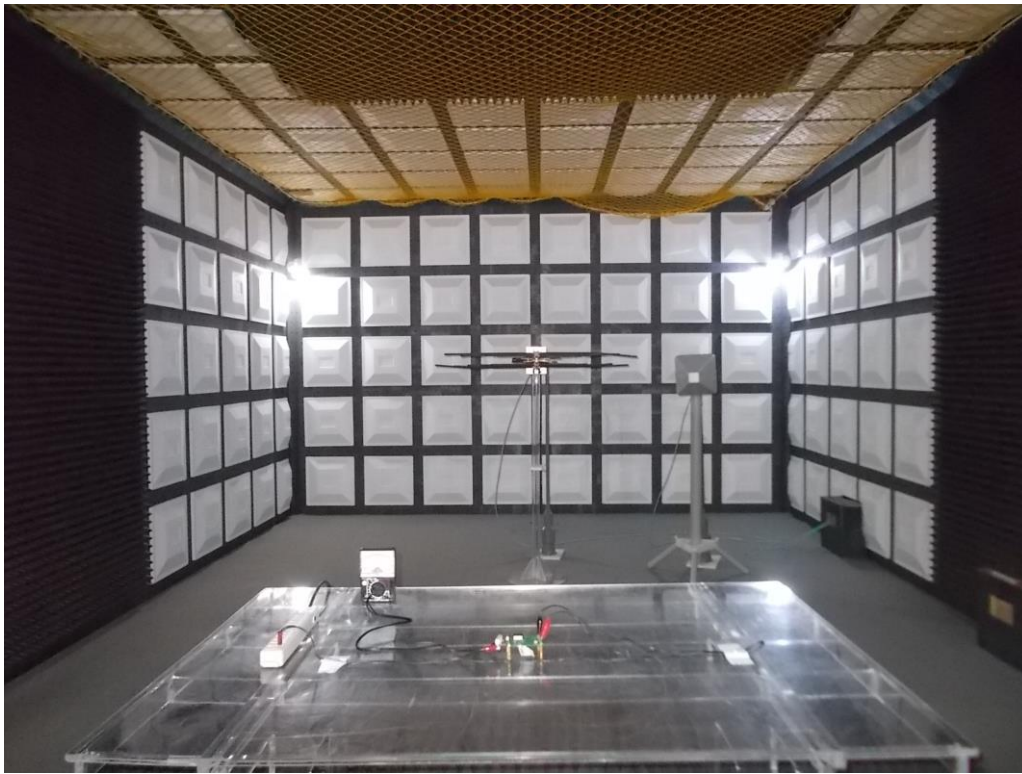
14.2 Radiated Emission at Frequencies up to 1GHz



14.3 Electrostatic Discharge Immunity Test (ESD)



14.4 Radio-frequency, Electromagnetic Field Immunity Test (RS)



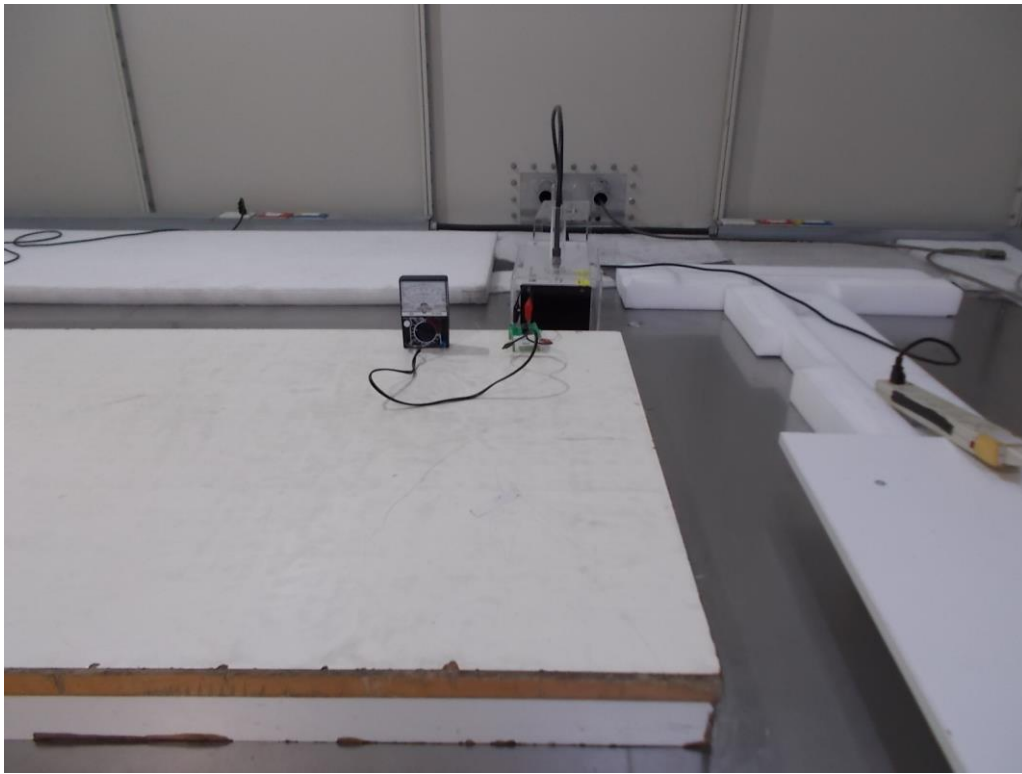
14.5 Electrical Fast Transient/Burst Immunity Test (EFT)



14.6 Surge Immunity Test

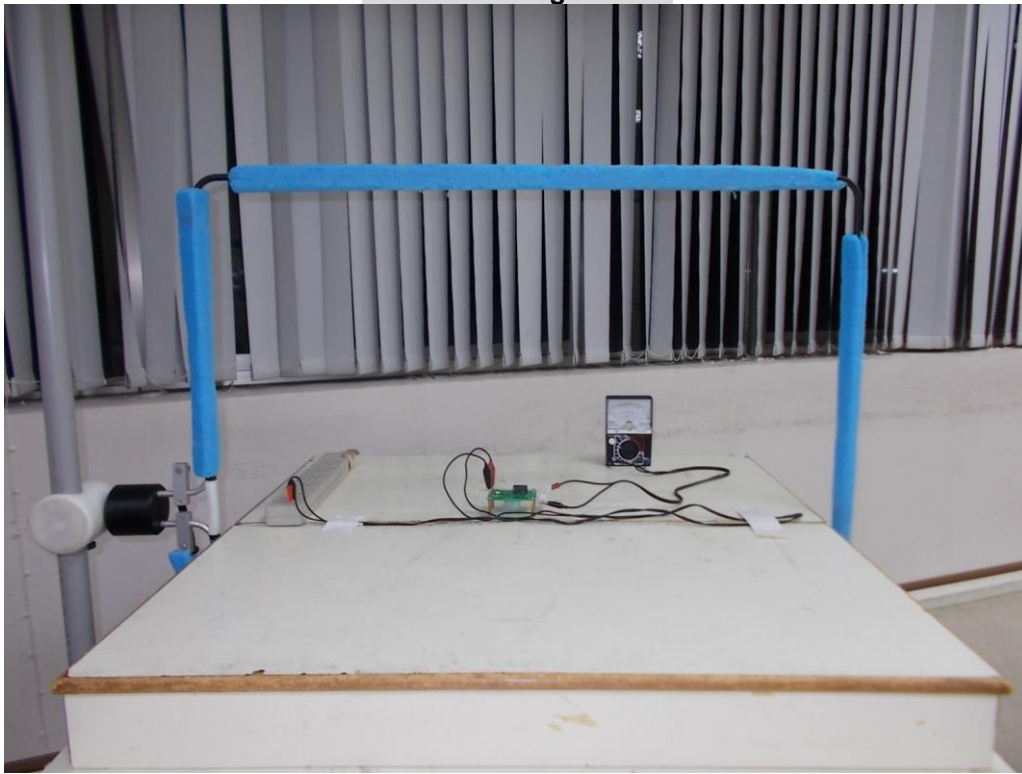


14.7 Conducted Disturbances Induced by RF Fields (CS)

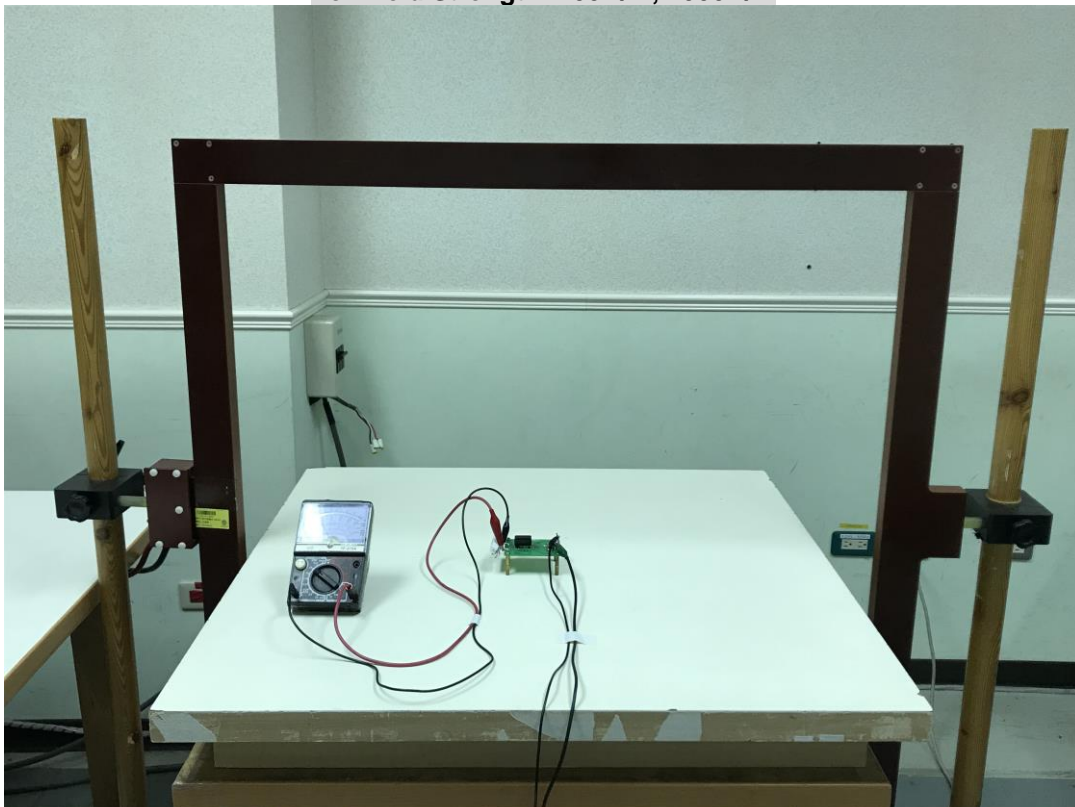


14.8 Power Frequency Magnetic Field Immunity Test (PFMF)

For Field Strength: 1A/m



For Field Strength: 100A/m, 1000A/m



Appendix – Information of the Testing Laboratories

We, Bureau Veritas Consumer Products Services (H.K.) Ltd., Taoyuan Branch, were founded in 1988 to provide our best service in EMC, Radio, Telecom and Safety consultation. Our laboratories are accredited and approved according to ISO/IEC 17025.

If you have any comments, please feel free to contact us at the following:

Lin Kou EMC/RF Lab

Tel: 886-2-26052180

Fax: 886-2-26051924

Hsin Chu EMC/RF/Telecom Lab

Tel: 886-3-6668565

Fax: 886-3-6668323

Hwa Ya EMC/RF/Safety Lab

Tel: 886-3-3183232

Fax: 886-3-3270892

Email: service.adt@tw.bureauveritas.com

Web Site: www.bureauveritas-adt.com

The address and road map of all our labs can be found in our web site also.

--- END ---