

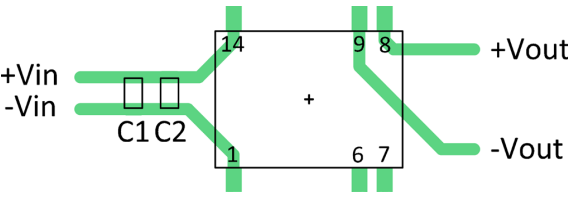
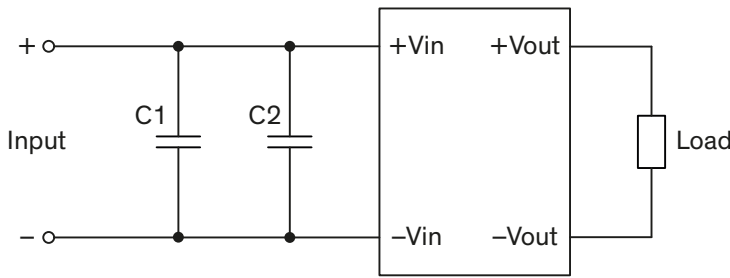
EMI Consideration

Suggested filter to comply with EN 55032 Radiated Emissions Class A limits
TRI 1SM Series meets EN 55032 Radiated Emissions Class A limits without external components

Suggested filter to comply with EN 55032 Conducted Emissions Class A limits

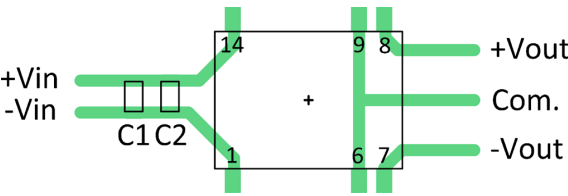
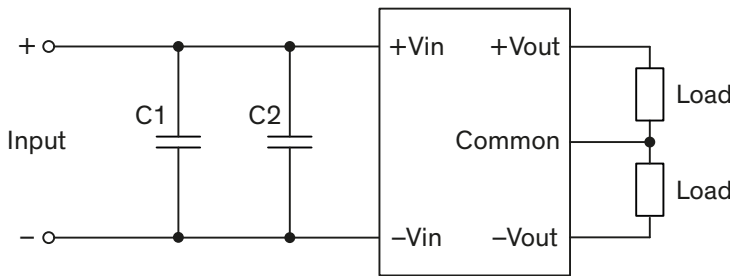
Single output models

PCB layout suggestion



Dual output models

PCB layout suggestion



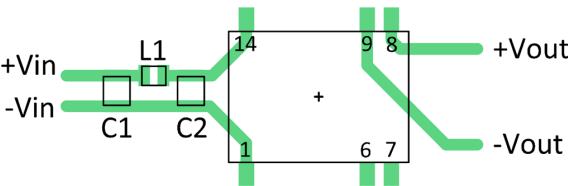
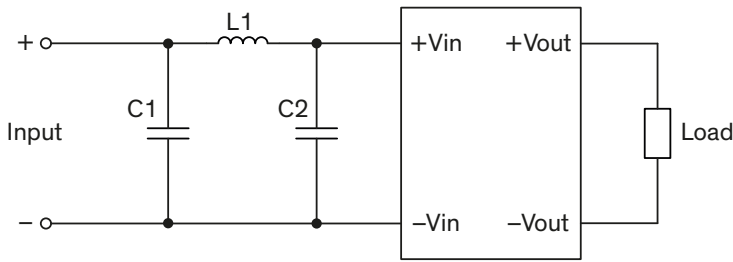
Suggested components to comply with EN 55032 Conducted Emissions Class A limits		
Model	C1	C2
TRI 1-05xxSM	-	68 μ F / 10 V / 1206 X5R
TRI 1-12xxSM	47 μ F / 25 V / 1206 X5R	47 μ F / 25 V / 1206 X5R
TRI 1-24xxSM	22 μ F / 50 V / 1206 X5R	22 μ F / 50 V / 1206 X5R

Suggested filter to comply with EN 55032 Radiated Emissions Class B limits
TRI 1SM Series meets EN 55032 Radiated Emissions Class B limits without external components

Suggested filter to comply with EN 55032 Conducted Emissions Class B limits

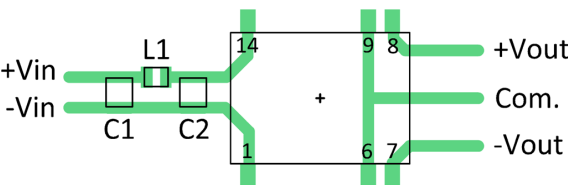
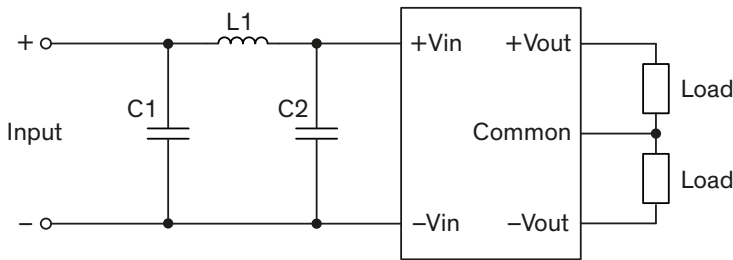
Single output models

PCB layout suggestion



Dual output models

PCB layout suggestion



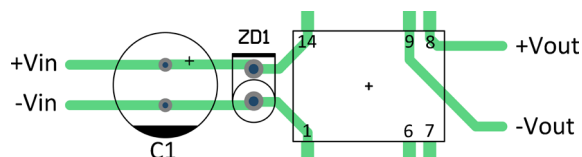
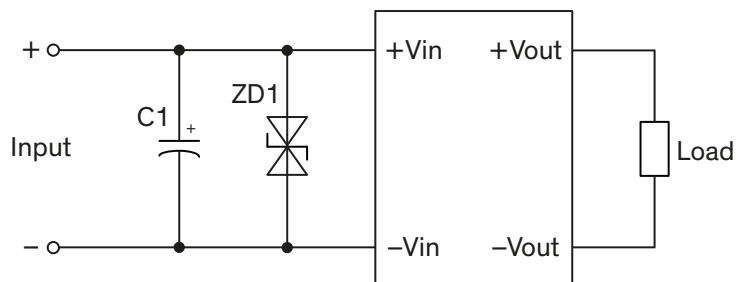
Suggested components to comply with EN 55032 Conducted Emissions Class B limits		
Model	C1, C2	L1
TRI 1-xxxxSM	47 μ F / 50 V / 1210 X5R	4.7 μ H / 1.12 A / 74404024047

EMS Consideration

Suggested filter to comply with EFT(Burst) & Surge

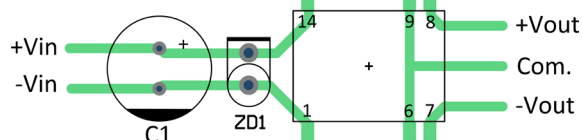
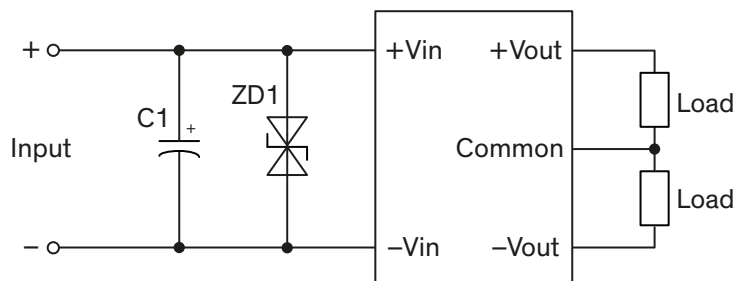
Single output models

PCB layout suggestion



Dual output models

PCB layout suggestion



Suggested components to comply with EFT(Burst) & Surge

Model	C1	ZD1
TRI 1-05xxSM	3'900 μ F / 10 V / KY	1.5KE7.5CA (TVS diode)
TRI 1-12xxSM	2'200 μ F / 16 V / KY	1.5KE18CA (TVS diode)
TRI 1-24xxSM	470 μ F / 50 V / KY	-