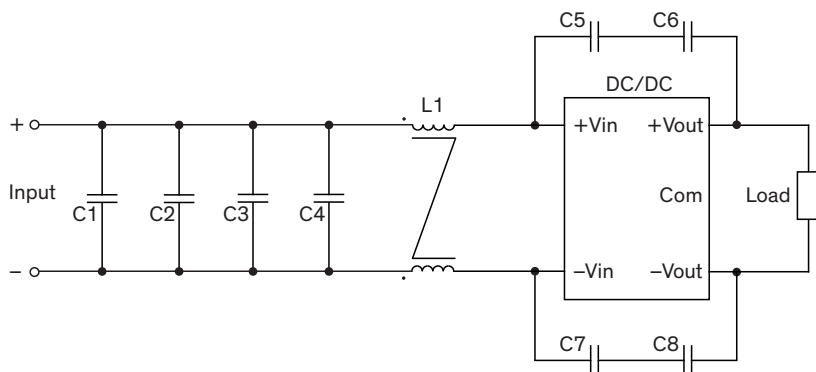


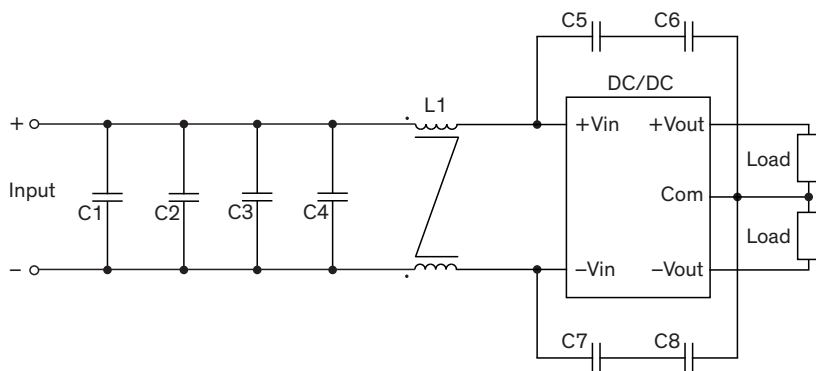
### EMI Consideration

Suggested filter to comply with EN 55032 Conducted Emissions Class B limits

#### Single output models

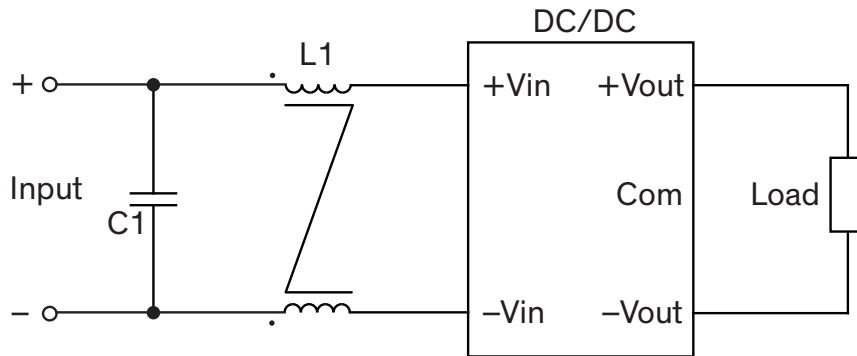
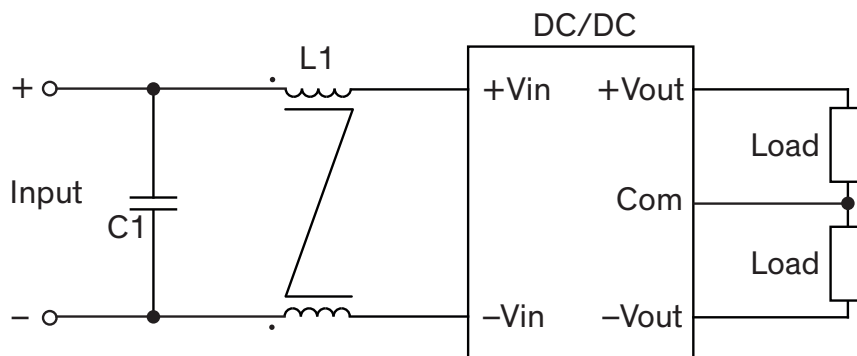


#### Dual output models



### Suggested components to comply with EN 55032 Conducted Emissions Class B limits

Model	C1, C2, C3, C4	L1	C5, C6, C7, C8
TRI 3-05xx	3.3 $\mu$ F / 100 V 1210 MLCC	0.4 mH / 4.5A 7448014501	1000 pF / Y1 Cap.
TRI 3-12xx	3.3 $\mu$ F / 100 V 1210 MLCC	0.4 mH / 4.5A 7448014501	1000 pF / Y1 Cap.
TRI 3-24xx	3.3 $\mu$ F / 100 V 1210 MLCC	0.4 mH / 4.5A 7448014501	1000 pF / Y1 Cap.
TRI 3-48xx	3.3 $\mu$ F / 100 V 1210 MLDC	0.4 mH / 4.5A 7448014501	1000 pF / Y1 Cap.

**Suggested filter to comply with EN 55032 Radiated Emissions Class A limits**
**Single output models**

**Dual output models**


Suggested components to comply with EN 55032 Radiated Emissions Class A limits		
Model	C1	L1
TRI 3-05xx	47 $\mu$ F / 25 V 1206 MLCC	0.4 mH / 4.5A 7448014501
TRI 3-12xx	47 $\mu$ F / 25 V 1206 MLCC	0.4 mH / 4.5A 7448014501
TRI 3-24xx	10 $\mu$ F / 50 V 1206 MLCC	0.4 mH / 4.5A 7448014501
TRI 3-48xx	2.2 $\mu$ F / 100 V 1206 MLCC	0.4 mH / 4.5A 7448014501