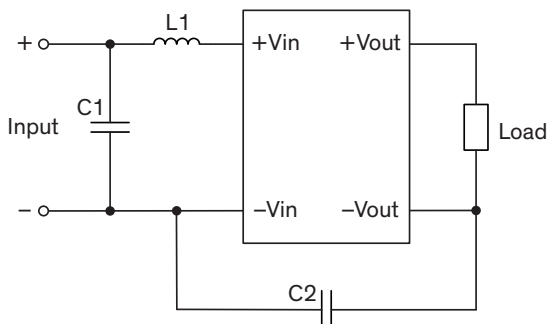


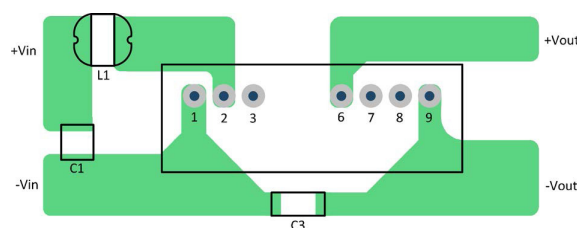
EMI Consideration

Suggested filter to comply with EN 55032 Conducted Emissions Class A limits

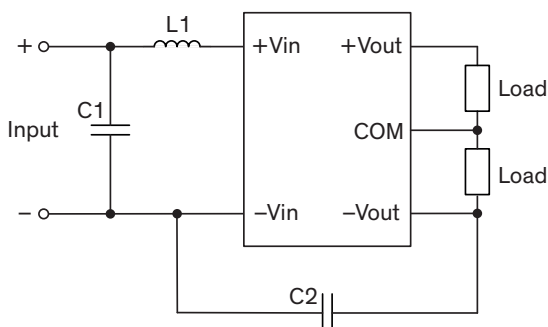
Single output models



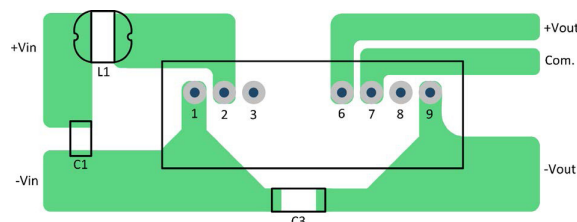
PCB layout suggestion (top view)



Dual output models



PCB layout suggestion (top view)



Suggested components to comply with EN 55032 Conducted Emissions Class A limits

Model	C1	C2	L1
TMR 2-24xxWI	4.7 uF / 50 V 1210 MLCC	220 pF / 2 KV 1808 X7R	3.3 μH / 2.15 A, SCD0403T
TMR 2-48xxWI	4.7 uF / 100 V 1210 MLCC	220 pF / 2 KV 1808 X7R	18 μH / 0.84 A, SCD0403T