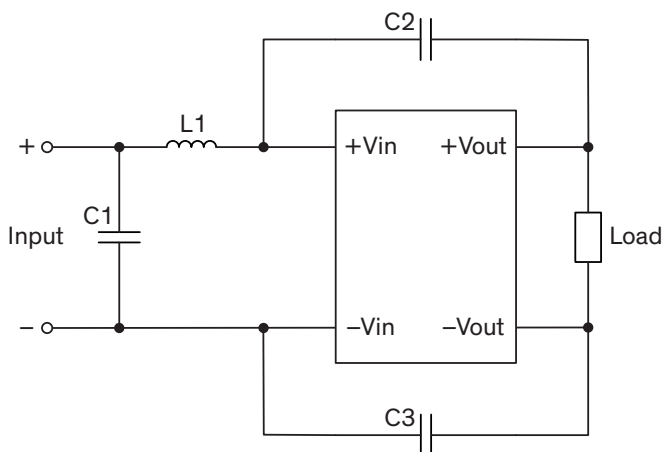


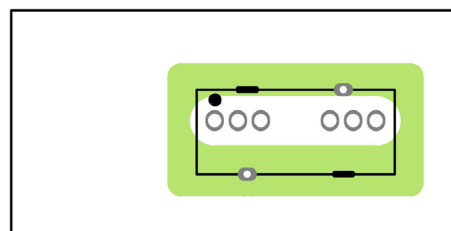
### EMI Consideration

Suggested filter to comply with EN 55032 Class A limits

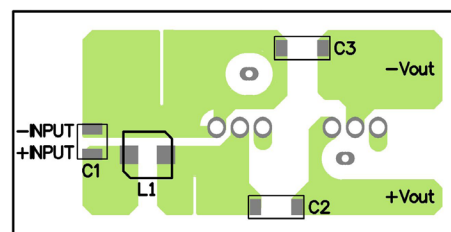
#### Single output models



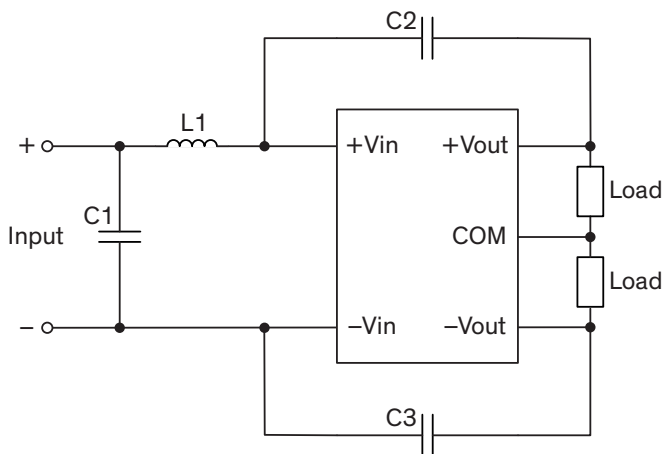
Top view



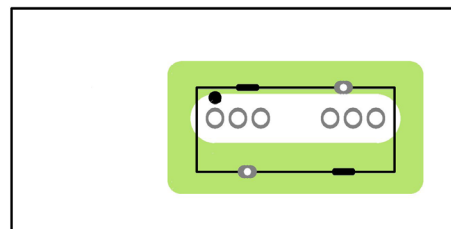
Bottom view



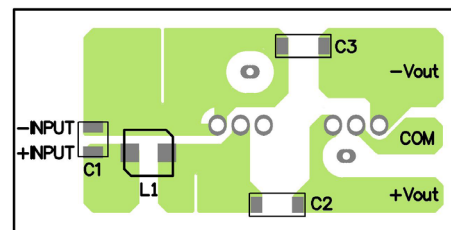
#### Dual output models



Top view



Bottom view



### Suggested components to comply with EN 55032 Class A limits

Model	C1	C2, C3	L1
TMR 3-24xxWIR	10 $\mu$ F / 50 V 1210 MLCC	1 nF / 3kV 1808 MLCC	22 $\mu$ H / 1.1 A SMD-Inductor TCK-149
TMR 3-48xxWIR	4.7 $\mu$ F / 100 V 1210 MLCC	1 nF / 3 kV 1808 MLCC	68 $\mu$ H / 590 mA SMD-Inductor TCK-150
TMR 3-72xxWIR	680 nF / 250 V 1210 MLCC	1 nF / 3 kV 1808 MLCC	150 $\mu$ H / 320 mA SMD-Inductor TCK-161

TCK-149 datasheet: [www.tracopower.com/overview/tck-149](http://www.tracopower.com/overview/tck-149)

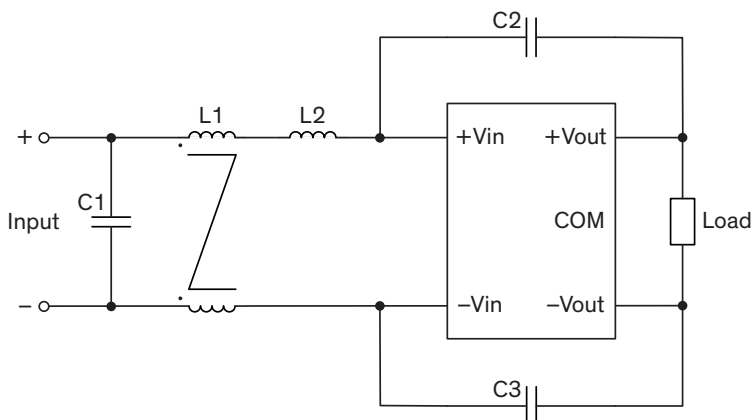
TCK-150 datasheet: [www.tracopower.com/overview/tck-150](http://www.tracopower.com/overview/tck-150)

TCK-161 datasheet: [www.tracopower.com/overview/tck-161](http://www.tracopower.com/overview/tck-161)

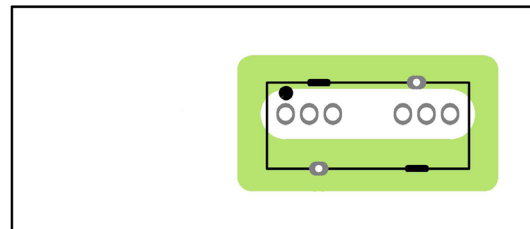
### EMI Consideration

Suggested filter to comply with EN 55032 Class B limits (for 24 & 48 Vin models)

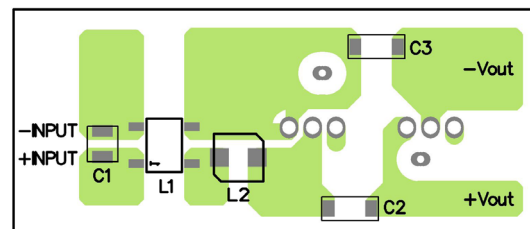
#### Single output models



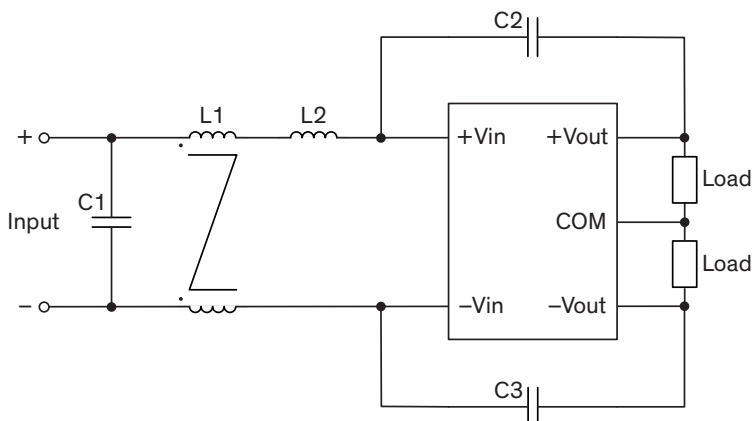
Top view



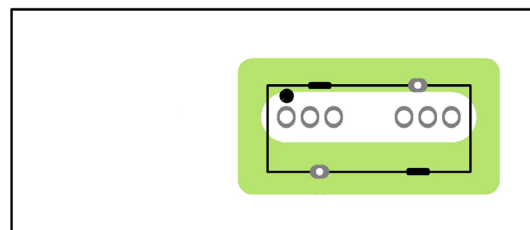
Bottom view



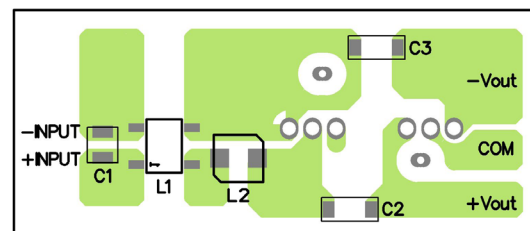
#### Dual output models



Top view



Bottom view



#### Suggested components to comply with EN 55032 Class B limits

Model	C1	C2, C3	L1	L2
TMR 3-24xxWIR	10 $\mu$ F / 50 V 1210 MLCC	1 nF / 3kV 1808 MLCC	55.6 $\mu$ H / 1 A Common mode choke TCK-162	22 $\mu$ H / 1.1 A SMD-Inductor TCK-149
TMR 3-48xxWIR	4.7 $\mu$ F / 100 V 1210 MLCC	1 nF / 3 kV 1808 MLCC	137.5 $\mu$ H / 640 mA Common mode choke TCK-140	68 $\mu$ H / 590 mA SMD-Inductor TCK-150

TCK-140 datasheet: [www.tracopower.com/overview/tck-140](http://www.tracopower.com/overview/tck-140)

TCK-149 datasheet: [www.tracopower.com/overview/tck-149](http://www.tracopower.com/overview/tck-149)

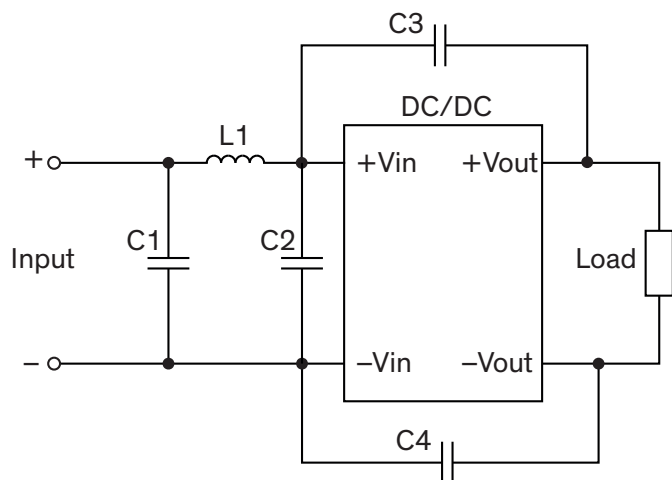
TCK-150 datasheet: [www.tracopower.com/overview/tck-150](http://www.tracopower.com/overview/tck-150)

TCK-162 datasheet: [www.tracopower.com/overview/tck-162](http://www.tracopower.com/overview/tck-162)

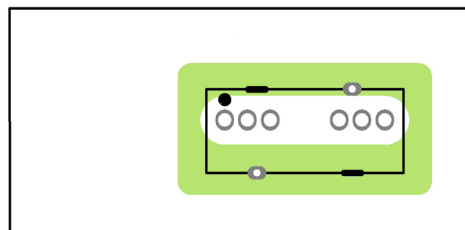
### EMI Consideration

Suggested filter to comply with EN 55032 Class B limits (for 110 Vin models)

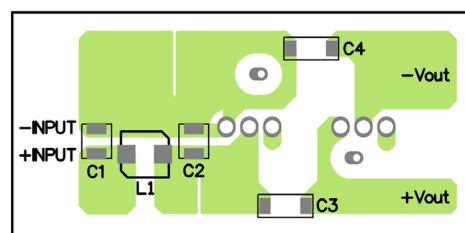
#### Single output models



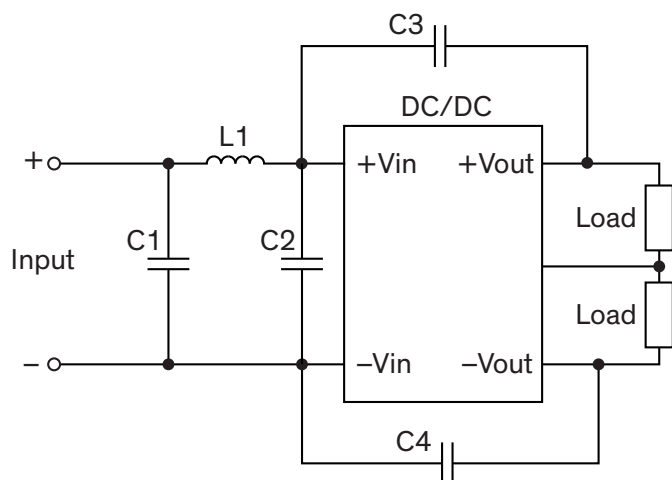
Top view



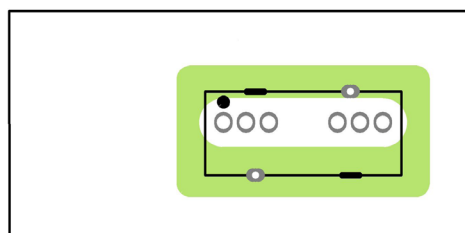
Bottom view



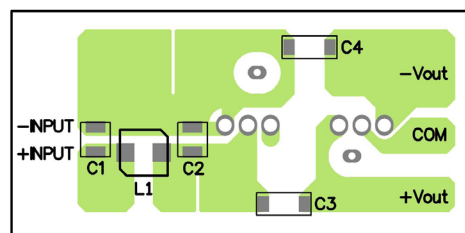
#### Dual output models



Top view



Bottom view



### Suggested components to comply with EN 55032 Class B limits

Model	C1, C2	C3, C4	L1
TMR 3-72xxWIR	680 nF / 250 V 1210 MLCC	1 nF / 3 kV 1808 MLCC	150 $\mu$ H / 320 mA SMD-Inductor TCK-161

TCK-161 datasheet: [www.tracopower.com/overview/tck-161](http://www.tracopower.com/overview/tck-161)