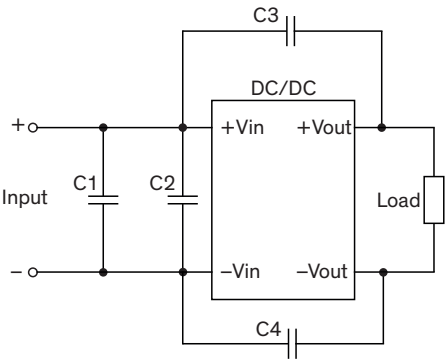


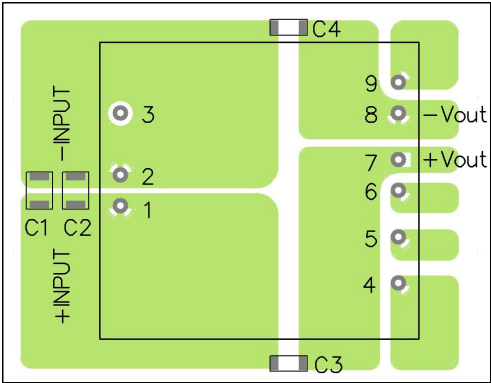
EMI Consideration

Suggested filter to comply with EN 55032 Conducted and Radiated Emissions Class A limits

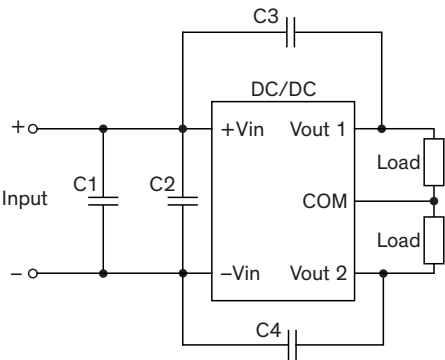
Single output models



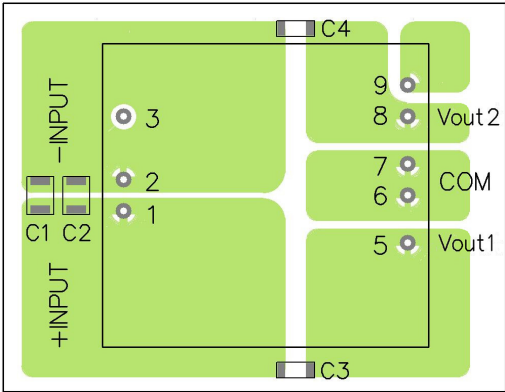
PCB layout suggestion



Dual (symmetric) output models



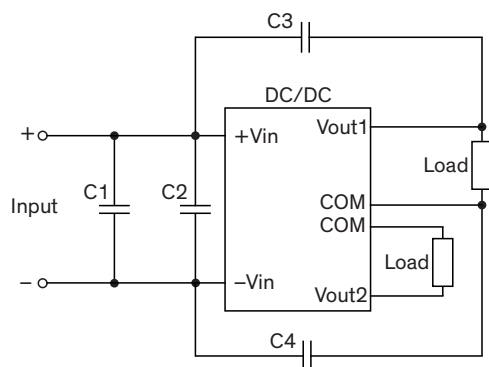
PCB layout suggestion



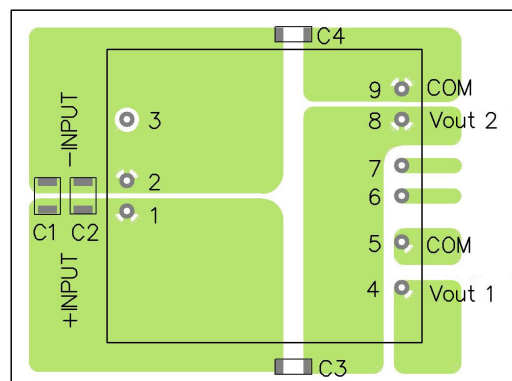
Suggested components to comply with EN 55032 Conducted and Radiated Emissions Class A limits				
Model	C1	C2	C3	C4
TEN 40-12xx	6.8 $\mu$ F / 50 V 1812 MLCC	-	1000 pF / 2 kV 1808 MLCC	1000 pF / 2 kV 1808 MLCC
TEN 40-24xx				
TEN 40-48xx	2.2 $\mu$ F / 100 V 1812 MLCC			

### Suggested filter to comply with EN 55032 Conducted and Radiated Emissions Class A limits

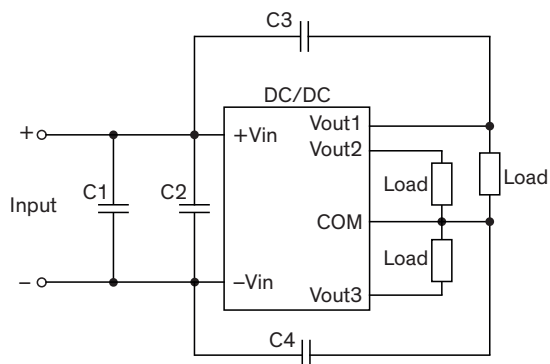
#### Dual (asymmetric) output models



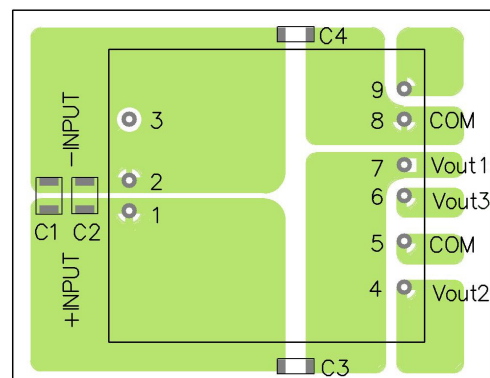
#### PCB layout suggestion



#### Triple output models



#### PCB layout suggestion

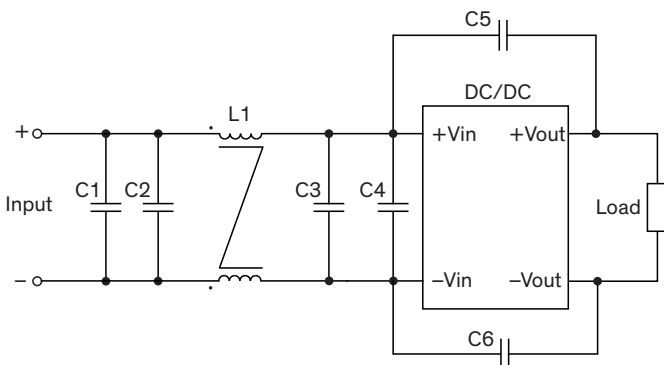


### Suggested components to comply with EN 55032 Conducted and Radiated Emissions Class A limits

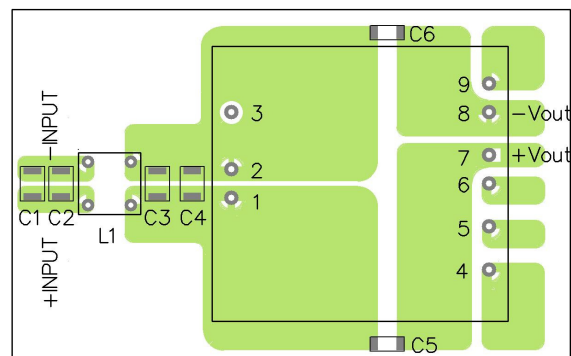
Model	C1	C2	C3	C4
TEN 40-12xx	6.8 $\mu$ F / 50 V 1812 MLCC	-	1000 pF / 2 kV 1808 MLCC	1000 pF / 2 kV 1808 MLCC
TEN 40-24xx				
TEN 40-48xx	2.2 $\mu$ F / 100 V 1812 MLCC			

### Suggested filter to comply with EN 55032 Conducted and Radiated Emissions Class B limits

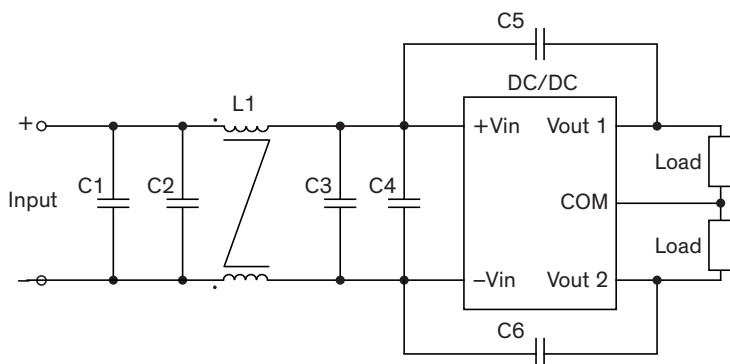
#### Single output models



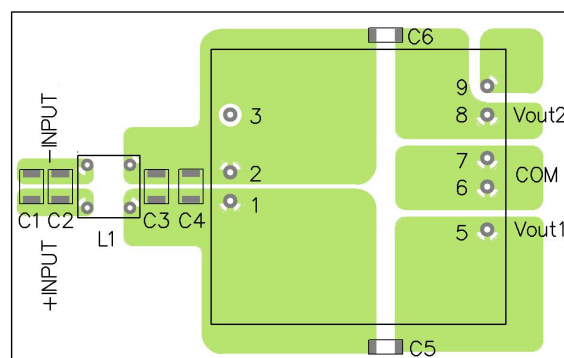
#### PCB layout suggestion



#### Dual (symmetric) output models



#### PCB layout suggestion



### Suggested components to comply with EN 55032 Conducted and Radiated Emissions Class B limits

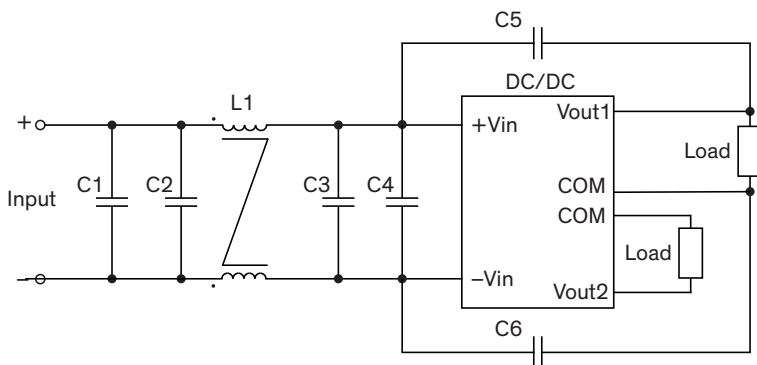
Model	C1	C2	C3	C4	C5	L1
TEN 40-12xx	4.7 $\mu$ F / 50 V 1812 MLCC	-	4.7 $\mu$ F / 50 V 1812 MLCC	-	1000 pF / 2 kV 1808 MLCC	450 $\mu$ H TCK-048
TEN 40-24xx	6.8 $\mu$ F / 50 V 1812 MLCC		6.8 $\mu$ F / 50 V 1812 MLCC			
TEN 40-48xx	2.2 $\mu$ F / 100 V 1812 MLCC	2.2 $\mu$ F / 100 V 1812 MLCC	2.2 $\mu$ F / 100 V 1812 MLCC	1000 pF / 2 kV 1812 MLCC		830 $\mu$ H TCK-053

TCK-048 datasheet: [www.tracopower.com/overview/tck-048](http://www.tracopower.com/overview/tck-048)

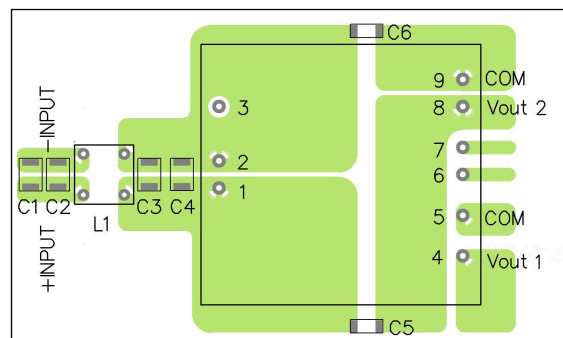
TCK-053 datasheet: [www.tracopower.com/overview/tck-053](http://www.tracopower.com/overview/tck-053)

### Suggested filter to comply with EN 55032 Conducted and Radiated Emissions Class B limits

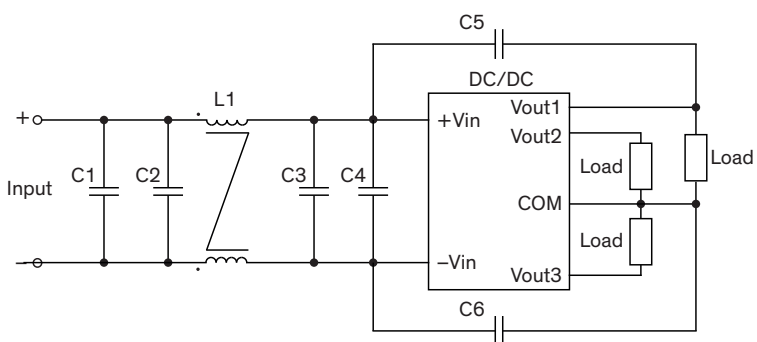
#### Dual (asymmetric) output models



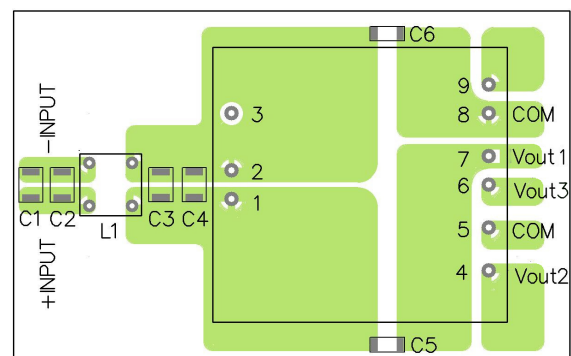
#### PCB layout suggestion



#### Triple output models



#### PCB layout suggestion



### Suggested components to comply with EN 55032 Conducted and Radiated Emissions Class B limits

Model	C1	C2	C3	C4	C5	L1
TEN 40-12xx	4.7 $\mu$ F / 50 V 1812 MLCC	-	4.7 $\mu$ F / 50 V 1812 MLCC	-	1000 pF / 2 kV 1808 MLCC	450 $\mu$ H TCK-048
TEN 40-24xx	6.8 $\mu$ F / 50 V 1812 MLCC		6.8 $\mu$ F / 50 V 1812 MLCC			
TEN 40-48xx	2.2 $\mu$ F / 100 V 1812 MLCC	2.2 $\mu$ F / 100 V 1812 MLCC	2.2 $\mu$ F / 100 V 1812 MLCC	2.2 pF / 2 kV 1812 MLCC		830 $\mu$ H TCK-053

TCK-048 datasheet: [www.tracopower.com/overview/tck-048](http://www.tracopower.com/overview/tck-048)

TCK-053 datasheet: [www.tracopower.com/overview/tck-053](http://www.tracopower.com/overview/tck-053)