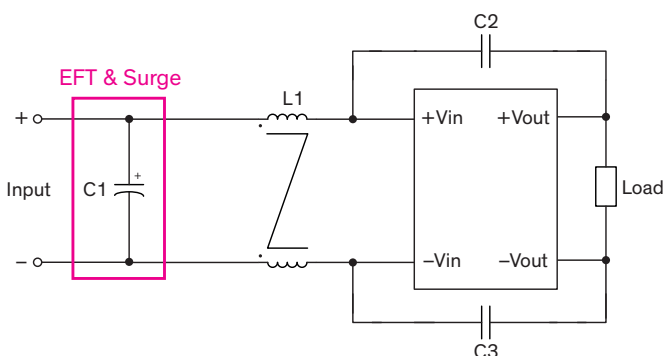


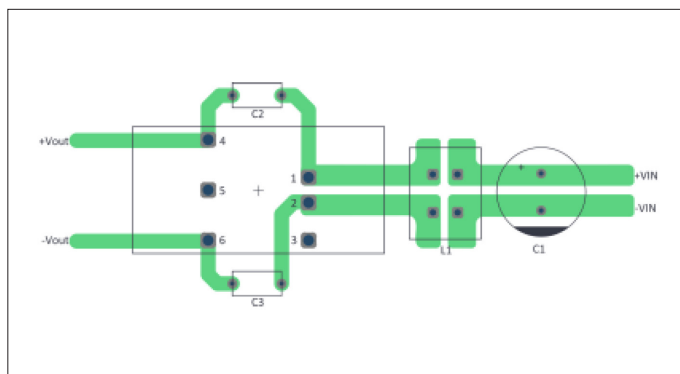
EMI Consideration

Suggested filter to comply with EN 55032 Radiated Emissions Class A limits

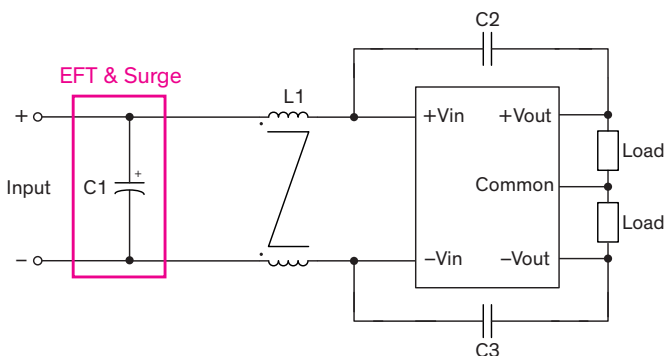
Single output models



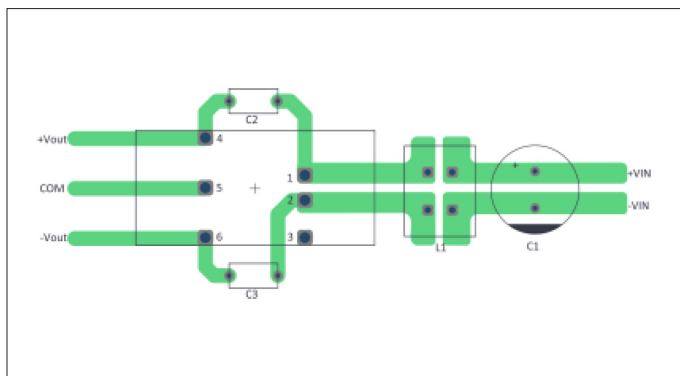
PCB layout suggestion



Dual output models

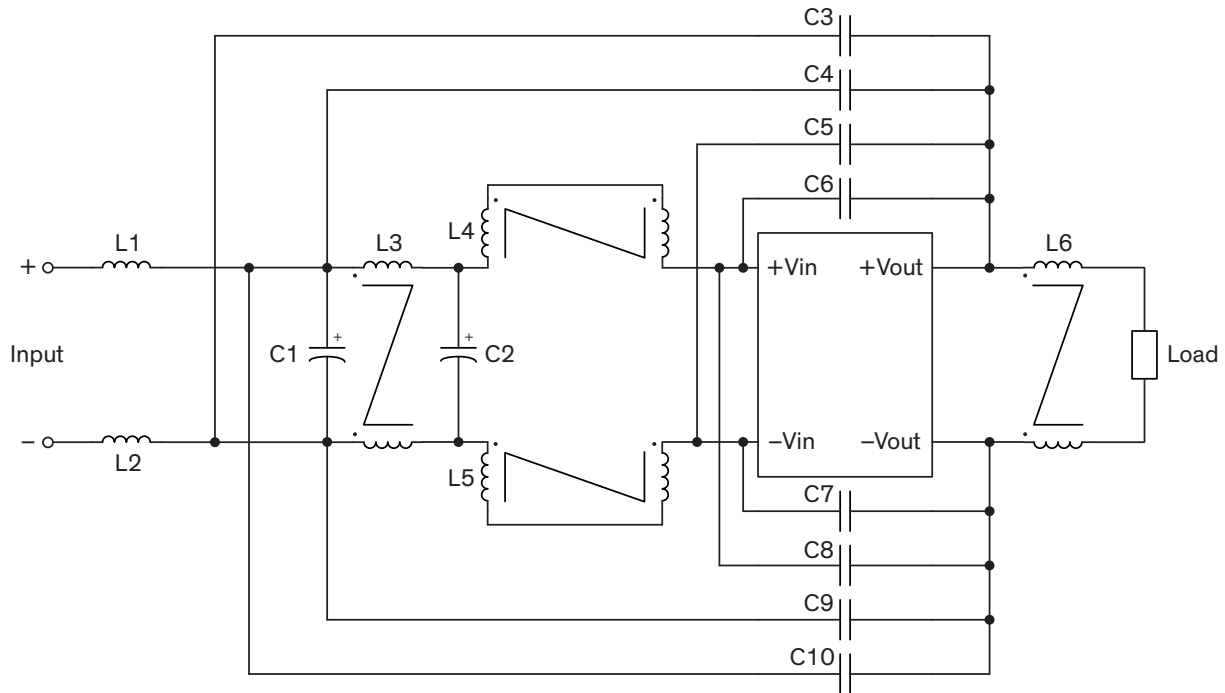


PCB layout suggestion



Suggested components to comply with EN 55032 Radiated Emissions Class A limits

Model	C1	L1	C2, C3
THR 20-24xxWI	390 μ F / 63 V / KY	0.175 mH / 10 A / 4 m Ω 74482210002	2200 pF / 250 VAC / Y5U Y1 YU0AH222M090
THR 20-48xxWI	330 μ F / 100 V / KY	0.175 mH / 10 A / 4 m Ω 74482210002	2200 pF / 250 VAC / Y5U Y1 YU0AH222M090
THR 20-72xxWI	390 μ F / 200 V / XKJ	0.175 mH / 10 A / 4 m Ω 74482210002	2200 pF / 250 VAC / Y5U Y1 YU0AH222M090

Suggested filter to comply with EN 55032 Conducted and Radiated Emissions Class B limits
Single output models

Suggested components to comply with EN 55032 Conducted and Radiated Emissions Class B limits

Model	L1, L2	C1	L3	C4, C9	C6, C7
THR 20-24xxWI	580 Ω / 5 A / 12 mΩ 7427512	390 μF / 200 V KY	0.175 mH / 10 A / 4 mΩ 74482210002	1500 pF / 250 VAC Y5U Y1 YU0AH152M120	2200 pF / 250 VAC Y5U Y1 YU0AH222M090

Note - C2, C3, C5, C8, C10, L4, L5, L6 are not required

Model	L1, L2	C1	L3, L6	C4, C9	C6, C7
THR 20-48xxWI	580 Ω / 5 A / 12 mΩ 7427512	390 μF / 200 V KY	0.175 mH / 10 A / 4 mΩ 74482210002	1500 pF / 250 VAC Y5U Y1 YU0AH152M120	2200 pF / 250 VAC Y5U Y1 YU0AH222M090

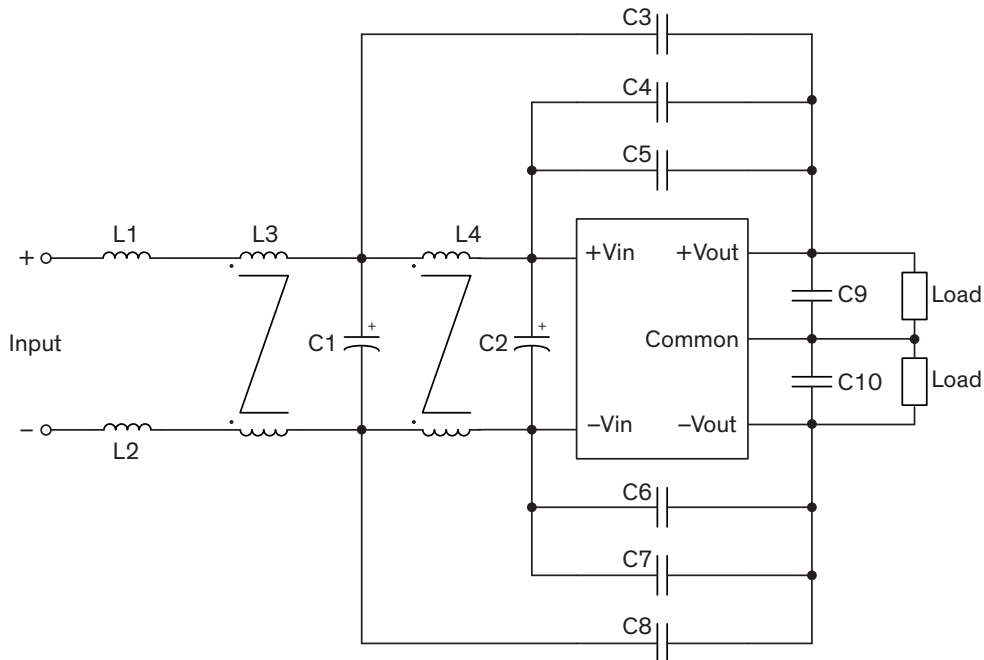
Note - C2, C3, C5, C8, C10, L4, L5 are not required

Model	L1, L2	C1	L3	C4, C9	C6, C7
THR 20-7211WI THR 20-7212WI THR 20-7215WI	580 Ω / 5 A / 12 mΩ 7427512	390 μF / 200 V KY	110 μH / 3 A / 31 mΩ 7448422311	1500 pF / 250 VAC Y5U Y1 YU0AH152M120	4700 pF / 250 VAC Y5U Y1 YU0AH472M130

Note - C2, C3, C10, C5, C8, L4, L5, L6 are not required

Model	L1, L2	C1, C2	L3	L4, L5	C3, C10	C4, C9	C5, C8	C6, C7
THR 20-7213WI	580 Ω 5A 12 mΩ 7427512	390 μF 200V KY	110 μH 3A 31 mΩ 7448422311	16 μH 10A 3 mΩ 7448421016	1000 pF 250 VAC Y5U Y1 YP0AH102K 100	4700 pF 250 VAC Y5U Y1 YU0AH472M 130	220 pF 250 VAC Y5U Y1 YP0AH221K 060	2200 pF 250 VAC Y5U Y1 YU0AH222M 090

Note - L6 is not required

Suggested filter to comply with EN 55032 Conducted and Radiated Emissions Class B limits
Dual output models

Suggested components to comply with EN 55032 Conducted and Radiated Emissions Class B limits

Model	L1, L2	C1	L4	C3, C8	C5, C6
THR 20-242xWI	580 Ω / 5 A / 12 m Ω 7427512	390 μ F / 200 V / KY	0.175 mH / 10 A 4 m Ω 74482210002	1500 pF / 250 VAC Y5U Y1 YU0AH152M120	2200 pF / 250 VAC Y5U Y1 YU0AH222M090

Note - L3, C2, C4, C7, C9, C10 are not required

Suggested components to comply with EN 55032 Conducted and Radiated Emissions Class B limits

Model	L1, L2	C1	L4	C3, C8	C4, C7	C9, C10	C5, C6
THR 20-482xWI	580 Ω / 5 A 12 m Ω 7427512	390 μ F 200 V KY	32 μ H / 8.5 A 5.5 m Ω 744842932	1000 pF 250 VAC Y5U Y1 YPOAH102K100	100 pF 250 VAC Y5U Y1 YPOAH101K060	100 pF 1206 / X7R	2200 pF 250 VAC Y5U Y1 YU0AH220M090

Note - L3, C2 are not required

Suggested components to comply with EN 55032 Conducted and Radiated Emissions Class B limits

Model	L1, L2	C1	L3	C2	L4	C3, C8	C5, C6
THR 20-722xWI	580 Ω / 5 A 12 m Ω 7427512	390 μ F 200 V KY	1 mH / 2 A 45 m Ω 744821201	47 μ F / 400 V KY	0.175 mH / 10 A 4 m Ω 74482210002	1500 pF 250 VAC Y5U Y1 YU0AH152M120	3300 pF 250 VAC Y5U Y1 YU0AH332M120

Note - C4, C7, C9, C10 are not required