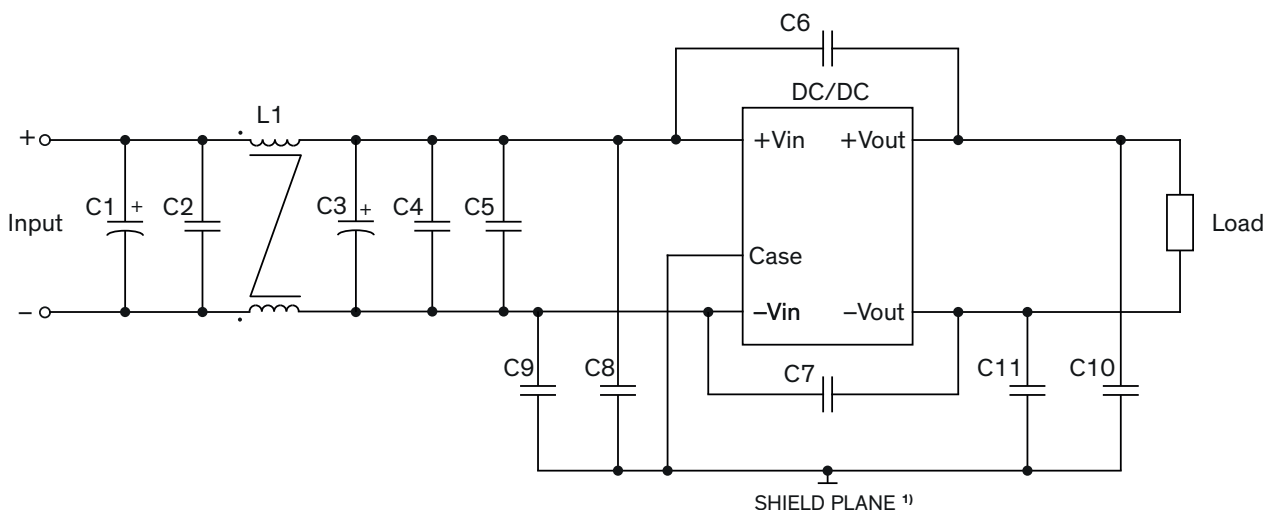


EMI Consideration

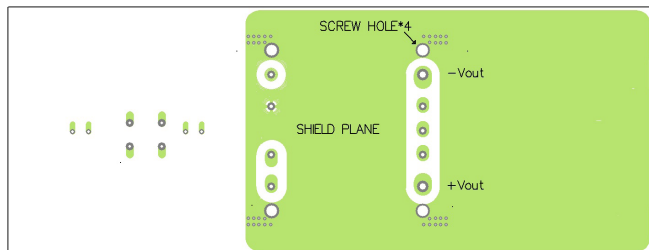
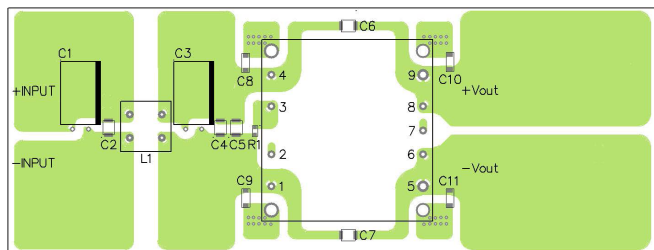
Suggested filter to comply with EN 55032 conducted and radiated Emissions Class A limits

Models with suffix F come with an internal filter to comply with conducted and radiated Emissions Class A limits.

TEP 75-24xxWI & TEP 75-48xxWI models



PCB layout suggestion



¹⁾ SHIELD PLANE: floating / isolated

Suggested components to comply with EN 55032 conducted and radiated Emissions Class A limits

Model	C1, C3	C2, C4, C5	C6, C7, C8, C9, C10, C11	L1
TEP 75-24xxWI	100 μ F / 50 V Al. Cap (lie down) Chemi-con KY	4.7 μ F / 50 V 1812 MLCC	1000 pF / 3 kV 1808 MLCC	156 μ H TCK-072
TEP 75-48xxWI	100 μ F / 100 V Al. Cap (lie down) Chemi-con KY	2.2 μ F / 100 V 1812 MLCC	1000 pF / 3 kV 1808 MLCC	620 μ H TCK-067

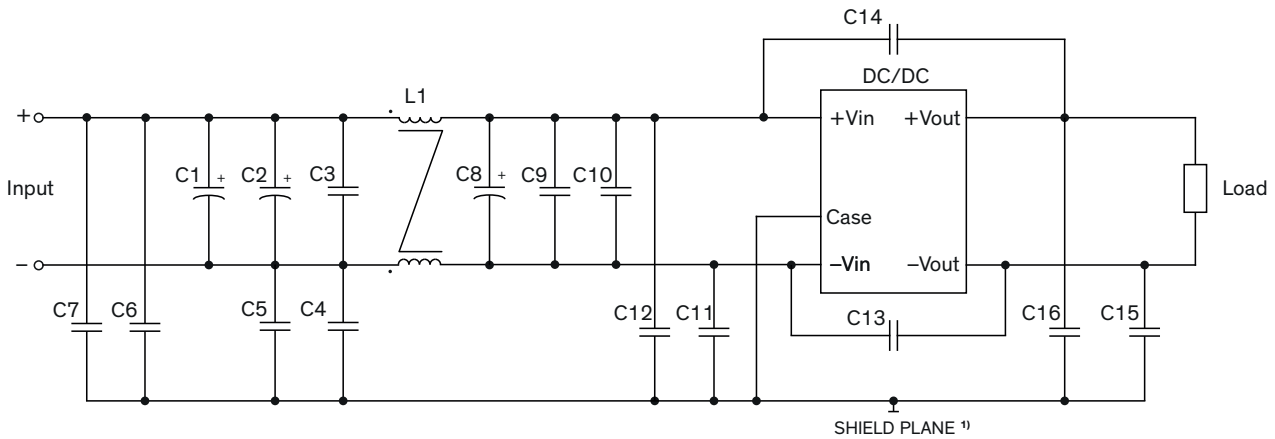
TCK-067 datasheet: www.tracopower.com/overview/tck-067

TCK-072 datasheet: www.tracopower.com/overview/tck-072

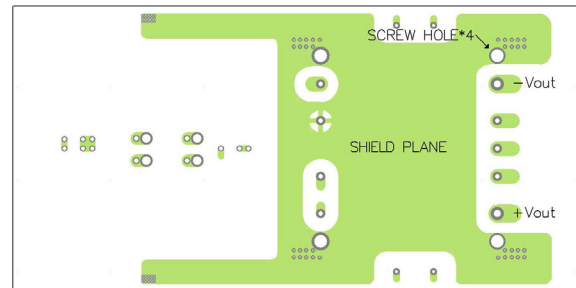
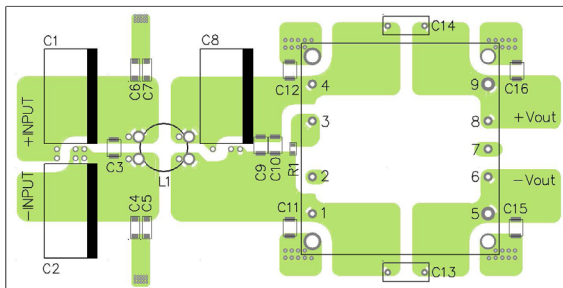
Suggested filter to comply with EN 55032 conducted and radiated Emissions Class A limits

Models with suffix F come with an internal filter to comply with conducted and radiated Emissions Class A limits.

TEP 75-72xxWI models



PCB layout suggestion



¹⁾ SHIELD PLANE: floating / isolated

Suggested components to comply with EN 55032 conducted and radiated Emissions Class A limits

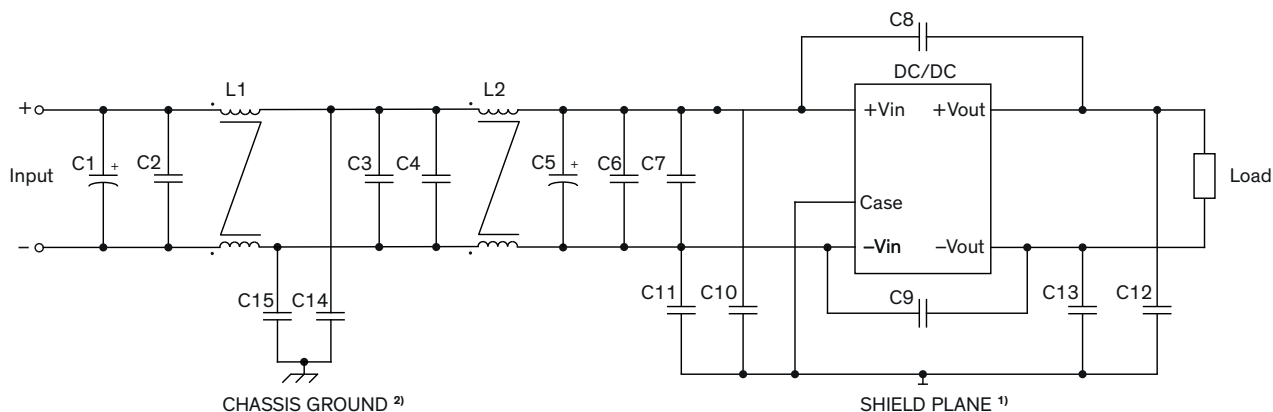
Model	C1, C8	C10	C13, C14	C5, C15, C16	L1
TEP 75-72xxWI	150 μ F / 200 V Al. Cap (lie down) Chemi-con KY	1 μ F / 250 V 1812 MLCC	1000 pF / 400 VAC TDK CD Series	1000 pF / 5 kV 1808 MLCC	521 μ H TCK-088

*C2, C3, C4, C6, C7, C9, C11, C12 = N/A

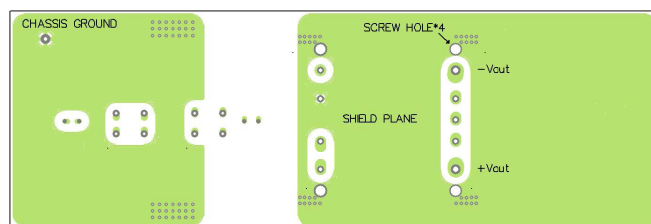
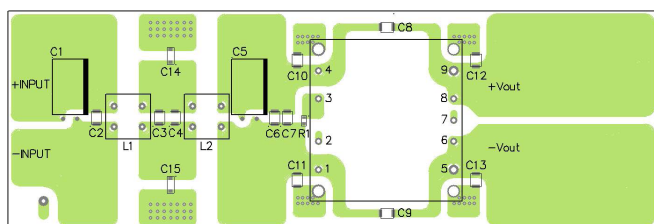
TCK-088 datasheet: www.tracopower.com/overview/tck-088

Suggested filter to comply with EN 55032 conducted and radiated Emissions Class B limits

TEP 75-24xxWI & TEP 75-48xxWI models



PCB layout suggestion



¹⁾ SHIELD PLANE: floating / isolated

²⁾ CHASSIS GROUND: Connect to chassis or earth, if not available leave floating

Suggested components to comply with EN 55032 conducted and radiated Emissions Class B limits

Model	C1, C5	C2, C3, C4, C6, C7	C8, C14, C15	C9	C10, C11, C12, C13	L1	L2
TEP 75-24xxWI	100 μ F / 50 V Al. Cap (lie down) Chemi-con KY	4.7 μ F / 50 V 1812 MLCC	1000 pF / 3 kV 1808 MLCC	1000 pF / 3 kV 1808 MLCC	10 nF / 2 kV 1812 MLCC	305 μ H TCK-073	305 μ H TCK-073
TEP 75-48xxWI	100 μ F / 100 V Al. Cap (lie down) Chemi-con KY	2.2 μ F / 100 V 1812 MLCC	1000 pF / 3 kV 1808 MLCC	4700 pF / 3 kV 1808 MLCC	10 nF / 2 kV 1812 MLCC	1186 μ H TCK-064	156 μ H TCK-072

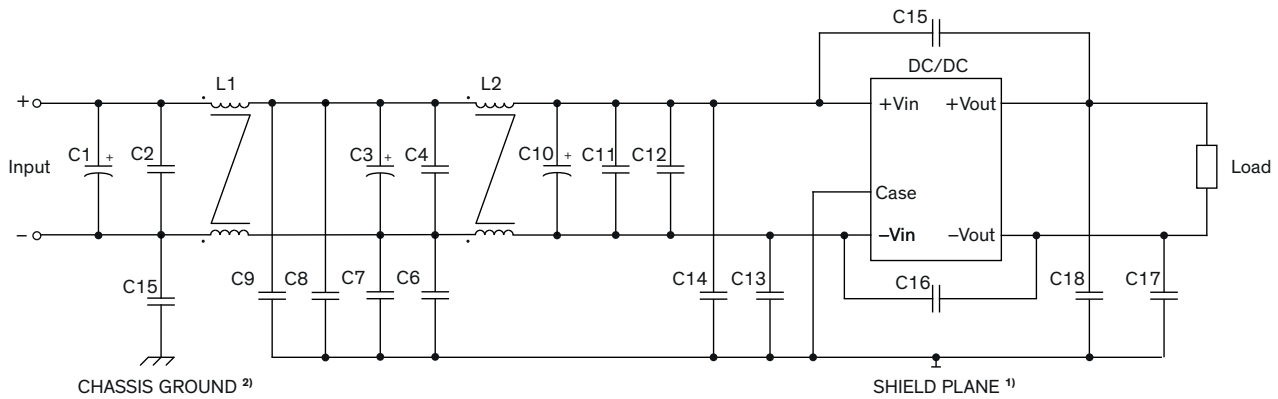
TCK-064 datasheet: www.tracopower.com/overview/tck-064

TCK-072 datasheet: www.tracopower.com/overview/tck-072

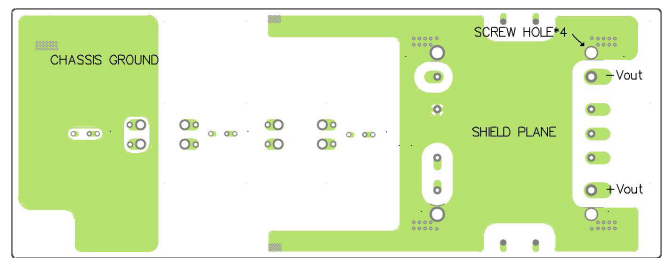
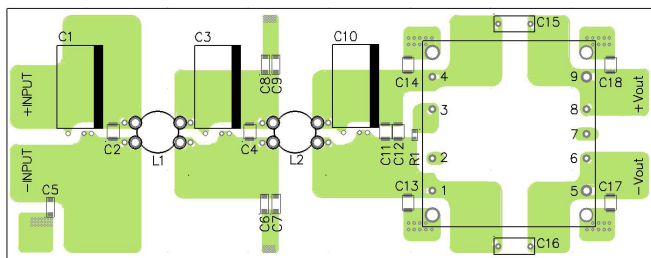
TCK-073 datasheet: www.tracopower.com/overview/tck-073

Suggested filter to comply with EN 55032 conducted and radiated Emissions Class B limits

TEP 75-72xxWI models



PCB layout suggestion



¹⁾ SHIELD PLANE: floating / isolated

²⁾ CHASSIS GROUND: Connect to chassis or earth, if not available leave floating

Suggested components to comply with EN 55032 conducted and radiated Emissions Class B limits

Model	C1, C3 C10	C11, C12	C13	C15, C16	C6, C7, C8, 9, C17, C18	L1	L2
TEP 75-72xxWI	150 μ F / 200 V Al. Cap (lie down) Chemi-con KY	1 μ F / 250 V 1812 MLCC	330 pF / 5 kV 1808 MLCC	1000 pF 400 VAC TDK CD Series	1000 pF / 5 kV 1808 MLCC	305 μ H TCK-101	806 μ H TCK-113

*C2, C4, C5, C14 = N/A

TCK-101 datasheet: www.tracopower.com/overview/tck-101

TCK-113 datasheet: www.tracopower.com/overview/tck-113