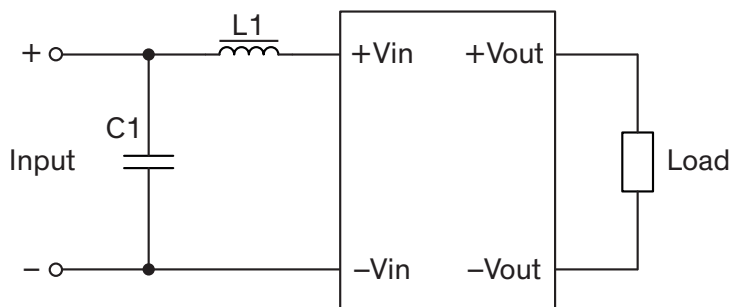


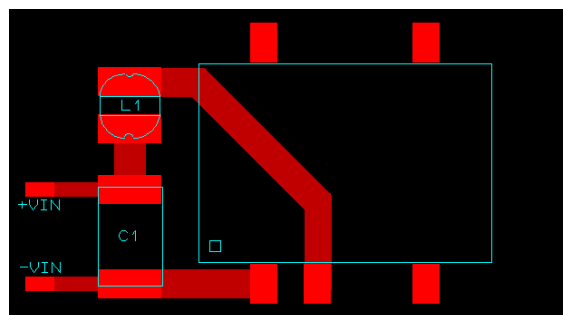
EMI Consideration

Suggested filter to comply with EN 55032 Conducted and Radiated Emissions Class A limits

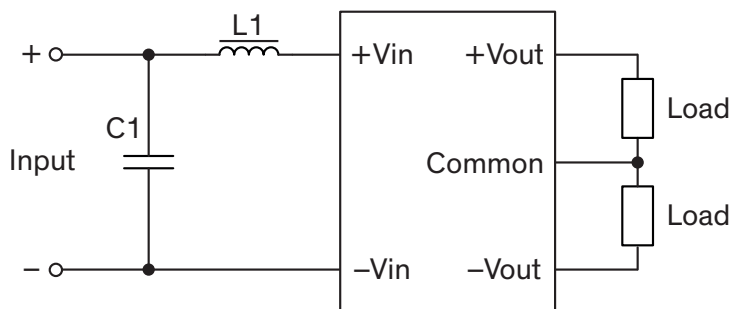
Single output models



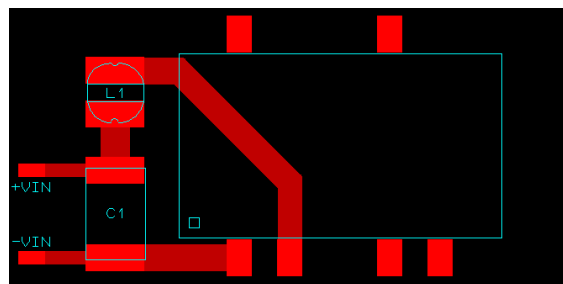
PCB layout suggestion



Dual output models



PCB layout suggestion



Suggested components to comply with EN 55032 Conducted and Radiated Emissions Class A limits

Model	C1	L1
TES 2-05xxH	10 μ F / 25 V / 1812 MLCC	1 μ H / 2.08 A / SCD03021T
TES 2-12xxH	10 μ F / 16 V / 1206 MLCC	1.8 μ H / 1.8 A / SCD03021T
TES 2-24xxH	4.7 μ F / 50 V / 1812 MLCC	18 μ H / 0.54 A / SCD03021T