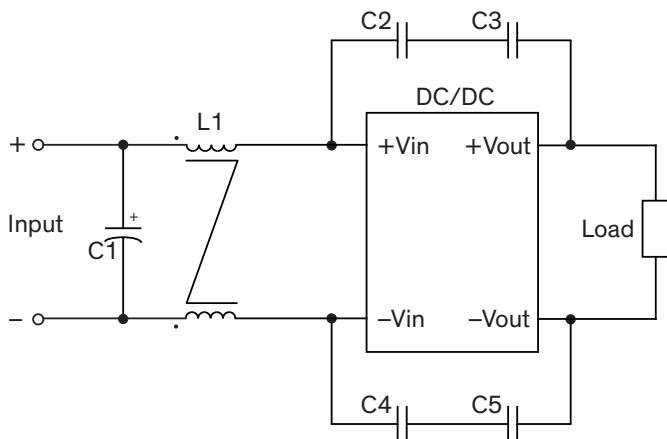


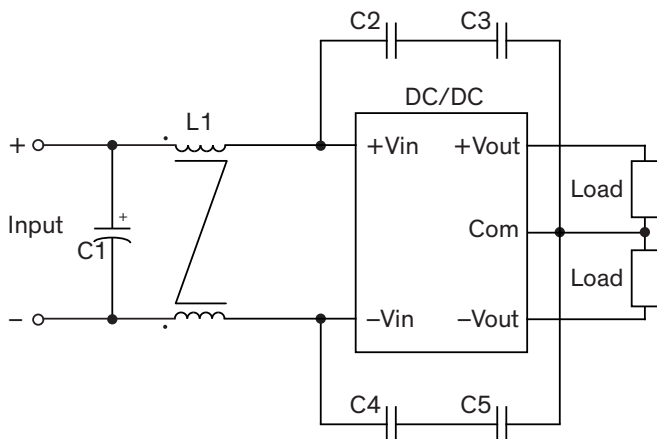
EMI Consideration

Suggested filter to comply with EN 55032 Conducted Emissions Class B limits

Single output models



Dual output models



Suggested components to comply with EN 55032 Conducted Emissions Class B limits

Model	C1	L1	C2, C3, C4, C5
TRI 10-12xx	22 μ F / 50 V 1210 MLCC	0.4 mH / 4.5 A 7448014501	1000 pF Y1 Cap.
TRI 10-24xx	3.3 μ F / 100 V 1210 MLCC	1 mH / 2 A 744821201	1000 pF Y1 Cap.
TRI 10-48xx	3.3 μ F / 100 V 1210 MLCC	1 mH / 2 A 744821201	1000 pF Y1 Cap.