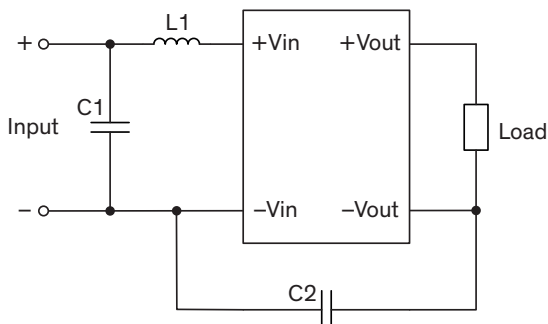


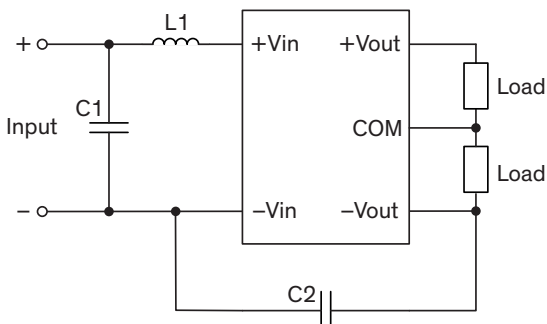
EMI Consideration

Suggested filter to comply with EN 55032 Conducted Emissions Class A limits

Single output models



Dual output models



Suggested components to comply with EN 55032 Conducted Emissions Class A limits

Model	C1	C2	L1
TMR 1-05xx	4.7 μ F / 50 V, 1210 X7R	220 pF / 2 kV, 1808 X7R	4.7 μ H / 1.2 A, SR0302
TMR 1-12xx	4.7 μ F / 50 V, 1210 X7R	220 pF / 2 kV, 1808 X7R	4.7 μ H / 1.2 A, SR0302
TMR 1-24xx	4.7 μ F / 50 V, 1210 X7R	220 pF / 2 kV, 1808 X7R	18 μ H / 0.58 A, SR0302
TMR 1-48xx	4.7 μ F / 100 V, 1210 X7R	220 pF / 2 kV, 1808 X7R	18 μ H / 0.58 A, SR0302
TMR 1-05xxSM	4.7 μ F / 50 V, 1210 X7R	220 pF / 2 kV, 1808 X7R	4.7 μ H / 1.2 A, SR0302
TMR 1-12xxSM	4.7 μ F / 50 V, 1210 X7R	220 pF / 2 kV, 1808 X7R	4.7 μ H / 1.2 A, SR0302
TMR 1-24xxSM	4.7 μ F / 50 V, 1210 X7R	220 pF / 2 kV, 1808 X7R	12 μ H / 0.75 A, SR0302
TMR 1-48xxSM	2.2 μ F / 100 V, 1210 X7R	220 pF / 2 kV, 1808 X7R	18 μ H / 0.58 A, SR0302