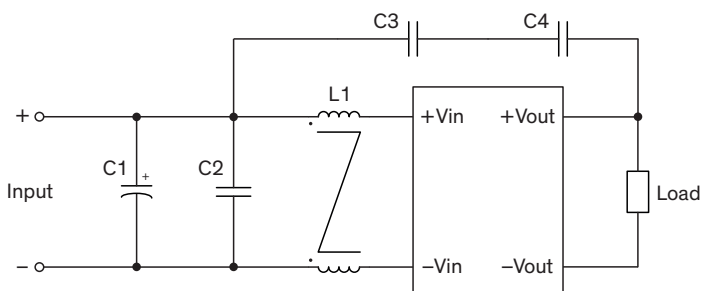


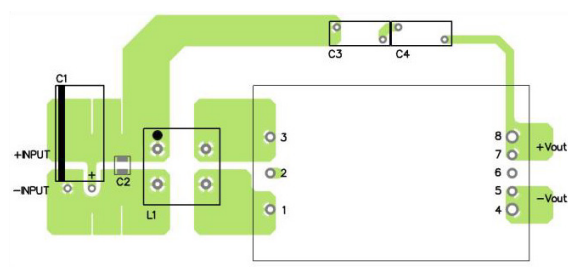
EMI Consideration

Suggested filter to comply with EN 55032 Conducted and Radiated Emissions Class A limits

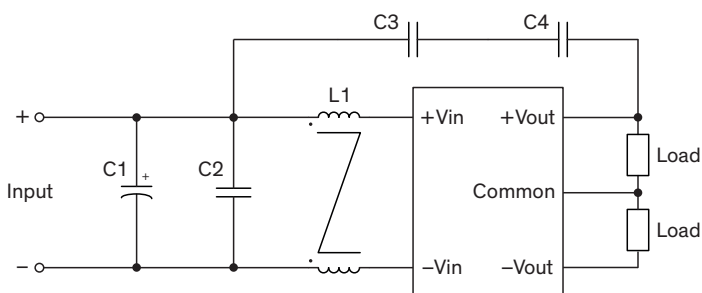
Single output models



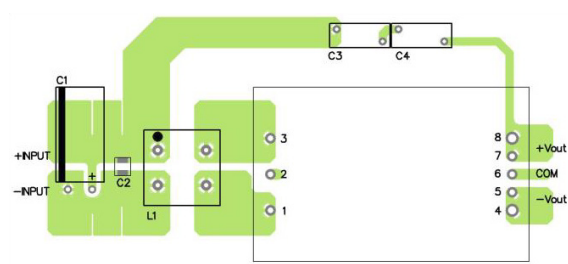
Layout suggestion Top view



Dual output models



Layout suggestion Top view



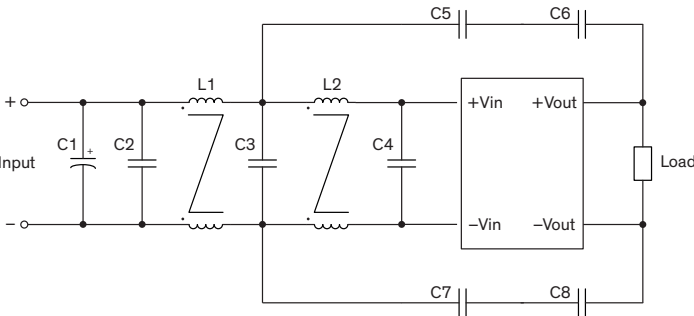
Suggested components to comply with EN 55032 Conducted and Radiated Emissions Class A limits

Model	C1	C2	C3, C4	L1
THM 60-xxxxWI	100 μ F / 100 V Al Cap. (lie down)	2.2 μ F / 100 V 1210 MLCC	100 pF Y1 capacitor	285 μ H TCK-103

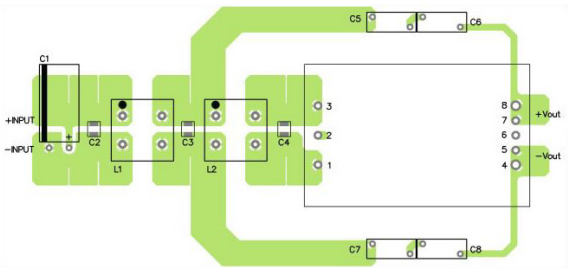
TCK-103 datasheet: www.tracopower.com/overview/tck-103

Suggested filter to comply with EN 55032 Conducted and Radiated Emissions Class B limits

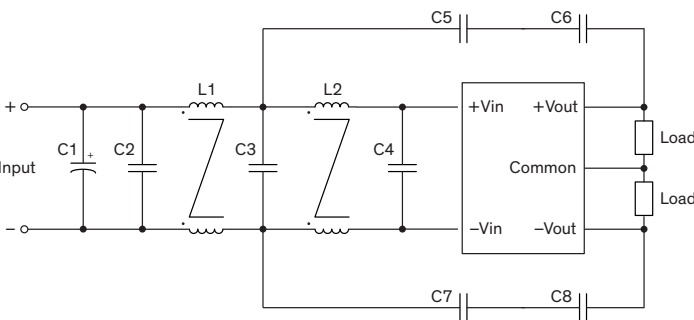
Single output models



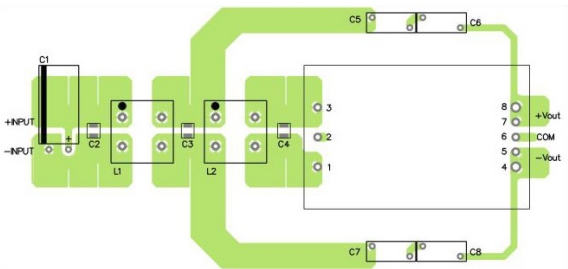
Layout suggestion Top view



Dual output models



Layout suggestion Top view



Suggested components to comply with EN 55032 Conducted and Radiated Emissions Class B limits					
Model	C1	C2, C3, C4	C5, C6	C7, C8	L1, L2
THM 60-xxxxWI	100 μ F / 100 V Al Cap. (lie down)	2.2 μ F / 100 V 1210 MLCC	47 pF Y1 capacitor	33 pF Y1 capacitor	285 μ H TCK-103

TCK-103 datasheet: www.tracopower.com/overview/tck-103