

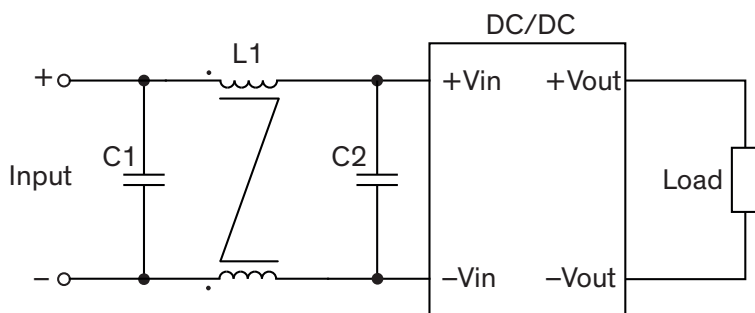
### EMI Consideration

#### Suggested filter to comply with EN 55032 Conducted and Radiated Emissions Class A limits

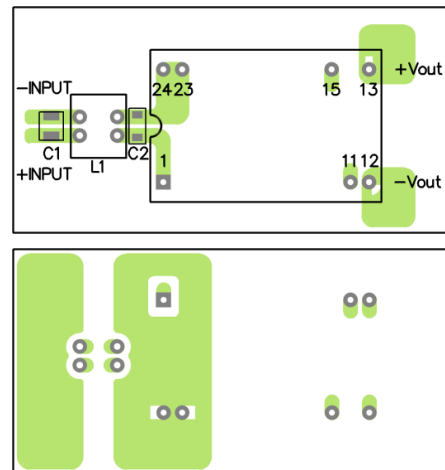
THM 3 Series meet EN 55032 Conducted and Radiated Emissions Class A without external components.

#### Suggested filter to comply with EN 55032 Conducted and Radiated Emissions Class B limits

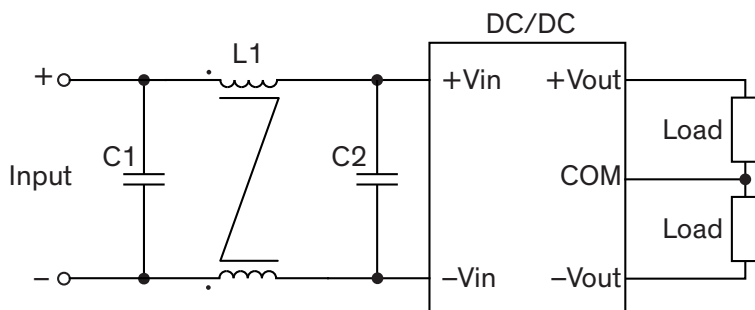
#### Single output models with standard pinning



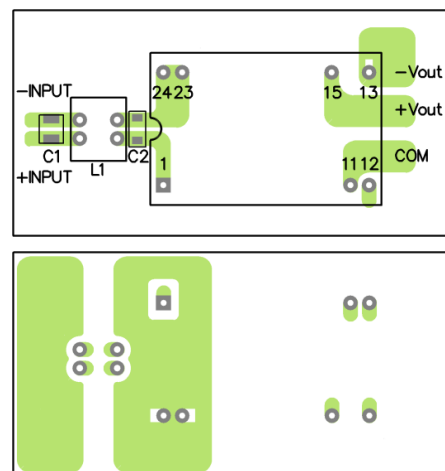
#### PCB layout suggestion



#### Dual output models with standard pinning



#### PCB layout suggestion



#### Suggested components to comply with EN 55032 Conducted and Radiated Emissions Class B limits

Model	C1	C2	L1
THM 3-05xx	22 $\mu$ F / 16 V 1206 MLCC	22 $\mu$ F / 16 V 1206 MLCC	137 $\mu$ H TCK-127
THM 3-12xx	4.7 $\mu$ F / 50 V 1206 MLCC	4.7 $\mu$ F / 50 V 1206 MLCC	277 $\mu$ H TCK-128
THM 3-24xx	4.7 $\mu$ F / 50 V 1206 MLCC	4.7 $\mu$ F / 50 V 1206 MLCC	277 $\mu$ H TCK-128
THM 3-48xx	2.2 $\mu$ F / 100 V 1206 MLCC	1 $\mu$ F / 100 V 1206 MLCC	175 $\mu$ H TCK-118

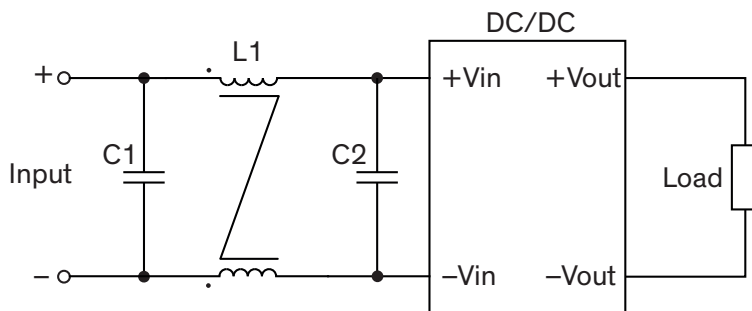
TCK-118 datasheet: [www.tracopower.com/overview/tck-118](http://www.tracopower.com/overview/tck-118)

TCK-127 datasheet: [www.tracopower.com/overview/tck-127](http://www.tracopower.com/overview/tck-127)

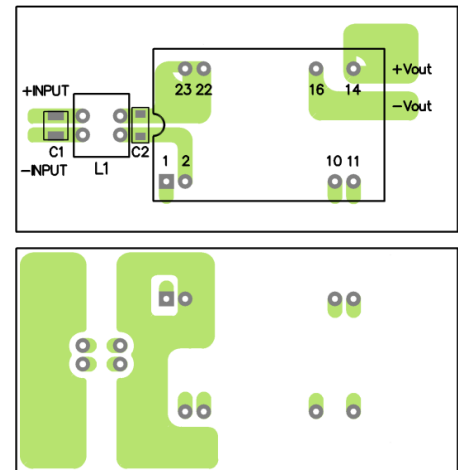
TCK-128 datasheet: [www.tracopower.com/overview/tck-128](http://www.tracopower.com/overview/tck-128)

### Suggested filter to comply with EN 55032 Conducted and Radiated Emissions Class B limits

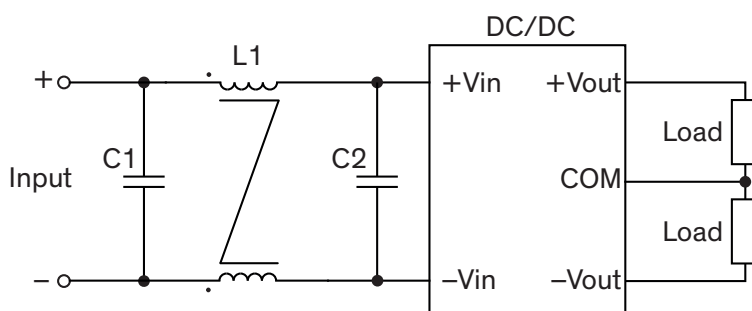
#### Single output models with optional pinning



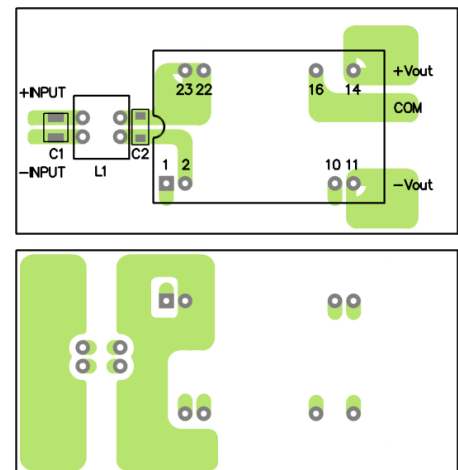
#### PCB layout suggestion



#### Dual output models with optional pinning



#### PCB layout suggestion



### Suggested components to comply with EN 55032 Conducted and Radiated Emissions Class B limits

Model	C1	C2	L1
THM 3-05xx	22 $\mu$ F / 16 V 1206 MLCC	22 $\mu$ F / 16 V 1206 MLCC	137 $\mu$ H TCK-127
THM 3-12xx	4.7 $\mu$ F / 50 V 1206 MLCC	4.7 $\mu$ F / 50 V 1206 MLCC	277 $\mu$ H TCK-128
THM 3-24xx	4.7 $\mu$ F / 50 V 1206 MLCC	4.7 $\mu$ F / 50 V 1206 MLCC	277 $\mu$ H TCK-128
THM 3-48xx	2.2 $\mu$ F / 100 V 1206 MLCC	1 $\mu$ F / 100 V 1206 MLCC	175 $\mu$ H TCK-118

TCK-118 datasheet: [www.tracopower.com/overview/tck-118](http://www.tracopower.com/overview/tck-118)

TCK-127 datasheet: [www.tracopower.com/overview/tck-127](http://www.tracopower.com/overview/tck-127)

TCK-128 datasheet: [www.tracopower.com/overview/tck-128](http://www.tracopower.com/overview/tck-128)