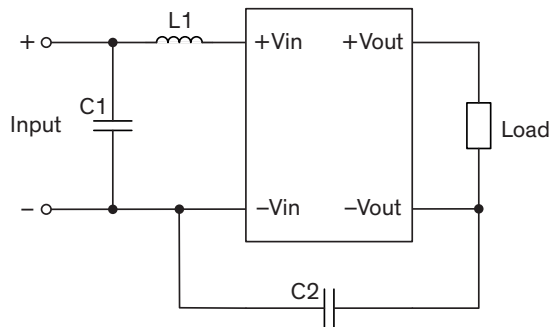


EMI Consideration

Suggested filter to comply with EN 55032 Conducted Emissions Class A limits



Suggested components to comply with EN 55032 Conducted Emissions Class A limits			
Model	C1	C2	L1
TMR 2-05xxE	4.7 μ F / 16 V, 1206 MLCC	–	4.7 μ H / 1.7 A, SCD0403T
TMR 2-24xxE	4.7 μ F / 50 V, 1210 MLCC	330 pF / 2KV, 1808 X7R	6.8 μ H / 1.41 A, SCD0403T
TMR 2-48xxE	2.2 μ F / 100 V, 1210 MLCC	330 pF / 2KV, 1808 X7R	27 μ H / 0.71 A, SCD0403T