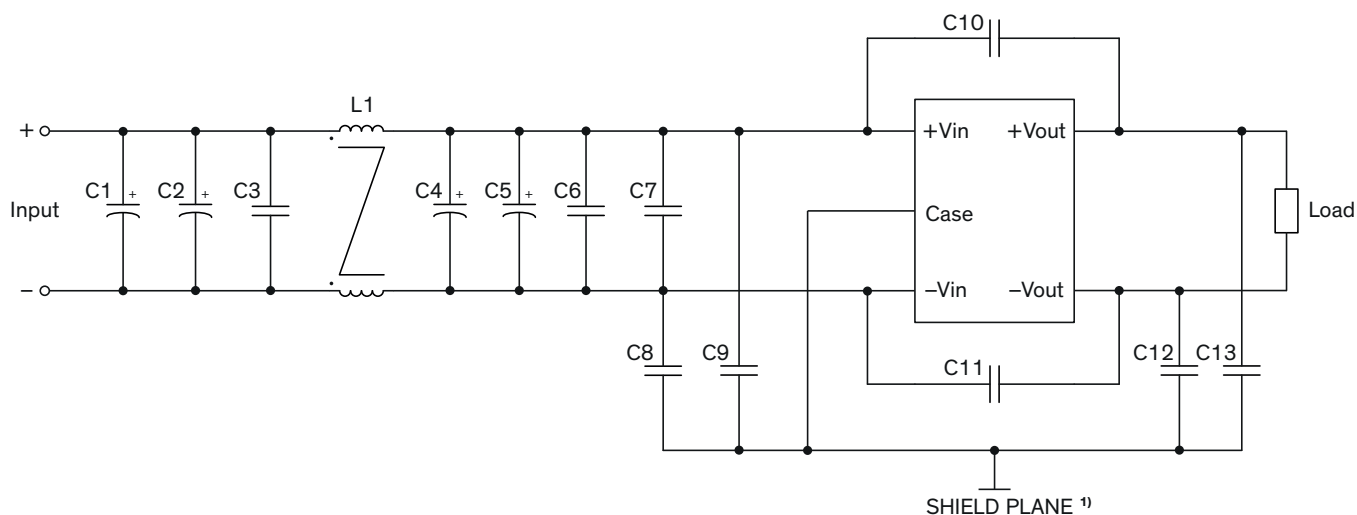


EMI Consideration

Suggested filter to comply with EN 55032 Conducted and Radiated Emissions Class A limits



¹⁾ SHIELD PLANE: floating / isolated

Suggested components to comply with EN 55032 Conducted and Radiated Emissions Class A limits

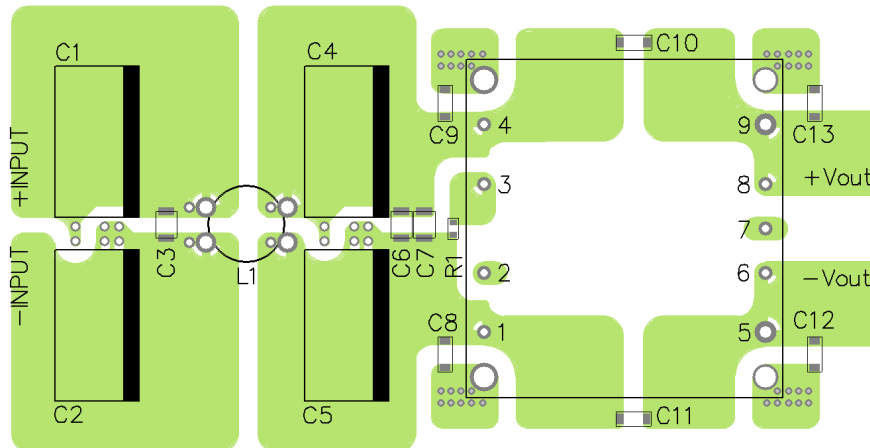
Model	C1, C2, C4	C3, C6, C7	C8, C9, C10, C11, C13	C12	L1
TEP 160-12xx TEP 160-24xx	470 μ F / 50 V Al. Cap. (lie down) KY	4.7 μ F / 50 V 1812 MLCC	1'000 pF / 3 kV 1808 MLCC	3'300 pF / 3 kV 1808 MLCC	156 μ H / 25 A TCK-086
TEP 160-48xx	220 μ F / 100 V Al. Cap. (lie down) KY	2.2 μ F / 100 V 1812 MLCC		1'000 pF / 3 kV 1808 MLCC	224 μ H / 15.4 A TCK-087

TCK-086 datasheet: www.tracopower.com/overview/tck-086

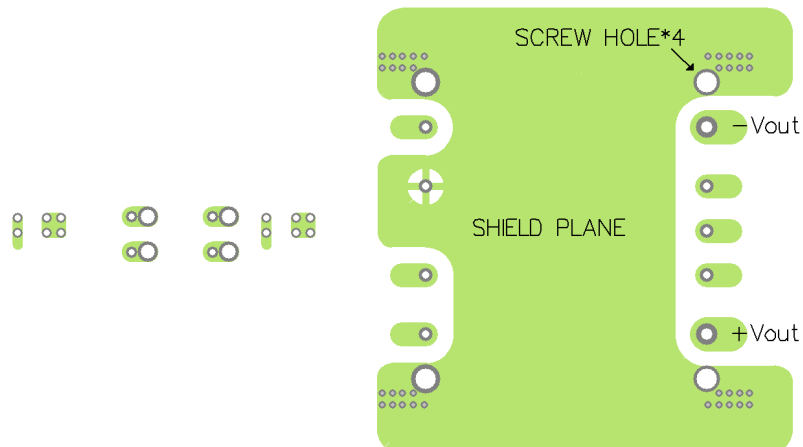
TCK-087 datasheet: www.tracopower.com/overview/tck-087

Suggested filter to comply with EN 55032 Conducted and Radiated Emissions Class A limits

PCB layout suggestion, Top view

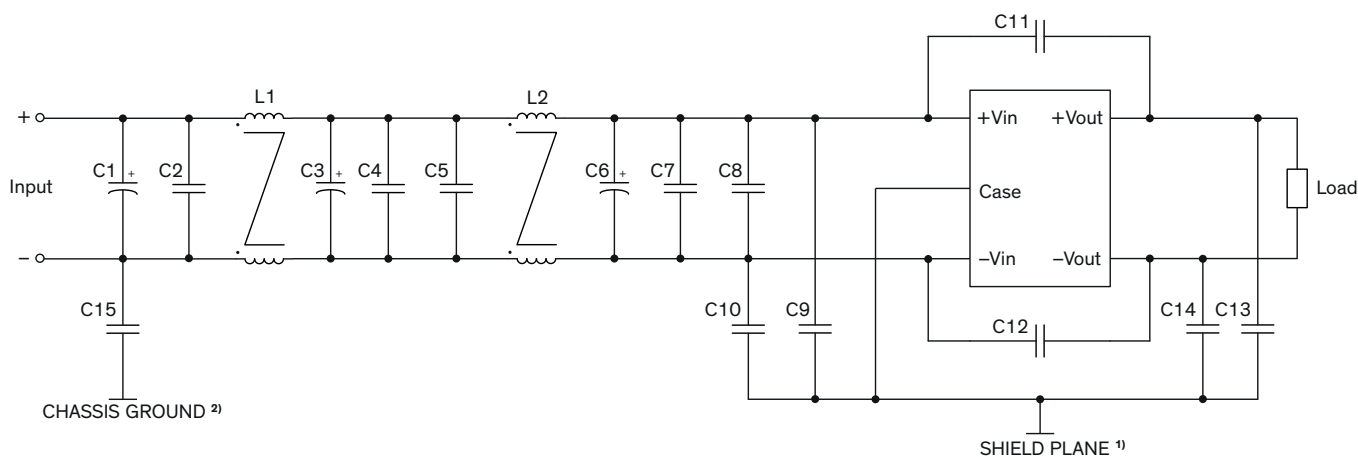


PCB layout suggestion, Bottom view



¹⁾ SHIELD PLANE: floating / isolated

Suggested filter to comply with EN 55032 Conducted and Radiated Emissions Class B limits



¹⁾ SHIELD PLANE: floating / isolated

²⁾ CHASSIS GROUND: Connect to chassis or earth, if not available leave floating

Suggested components to comply with EN 55032 Conducted and Radiated Emissions Class B limits

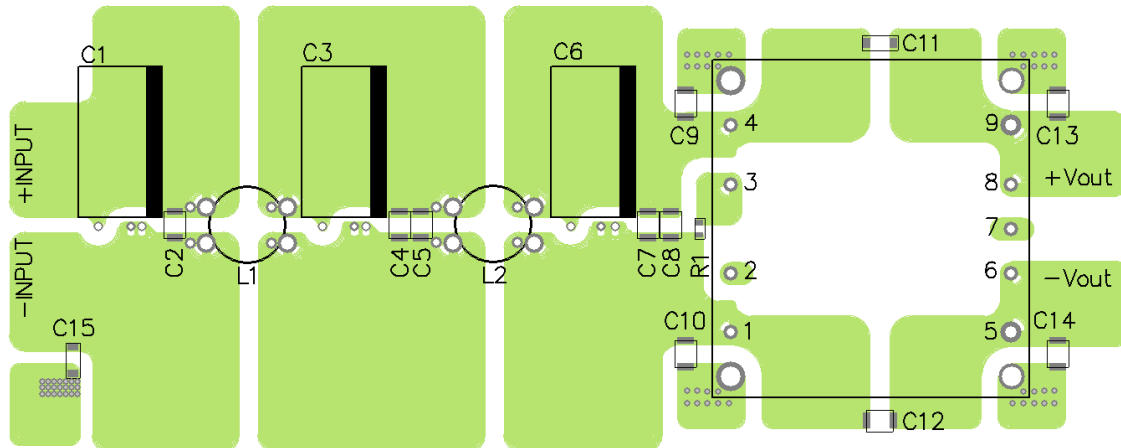
Model	C1, C3, C6	C2, C4, C5, C7, C8	C9, C10, C13, C14	C11	C12	C15	L1, L2
TEP 160-12xx TEP 160-24xx	470 µF 50 V Al. Cap. (lie down) KY	4.7 µF 50 V 1812 MLCC	10 nF 2 kV 1812 MLCC	1'000 pF 3 kV 1808 MLCC	4'700 pF 3 kV 1808 MCC	-	156 µH 25 A TCK-086
TEP 160-48xx	220 µF 100 V Al. Cap. (lie down) KY	2.2 µF 100 V 1812 MLCC		2'200 pF 3 kV 1808 MLCC	4'700 pF 3 kV 1812 MLCC	1'000 pF 3 kV 1808 MLCC	224 µH 15.4 A TCK-087

TCK-086 datasheet: www.tracopower.com/overview/tck-086

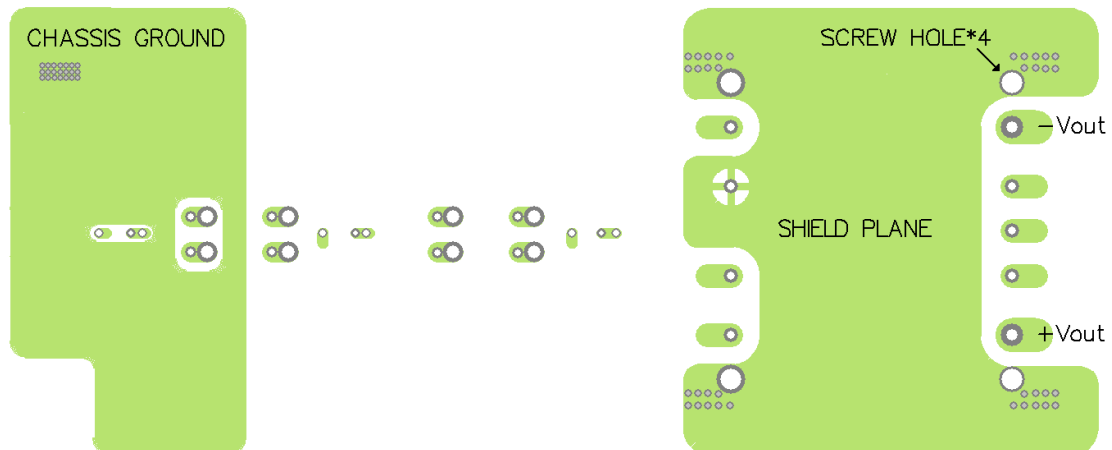
TCK-087 datasheet: www.tracopower.com/overview/tck-087

Suggested filter to comply with EN 55032 Conducted and Radiated Emissions Class B limits

PCB layout suggestion, Top view



PCB layout suggestion, Bottom view



¹⁾ SHIELD PLANE: floating / isolated

²⁾ CHASSIS GROUND: Connect to chassis or earth, if not available leave floating