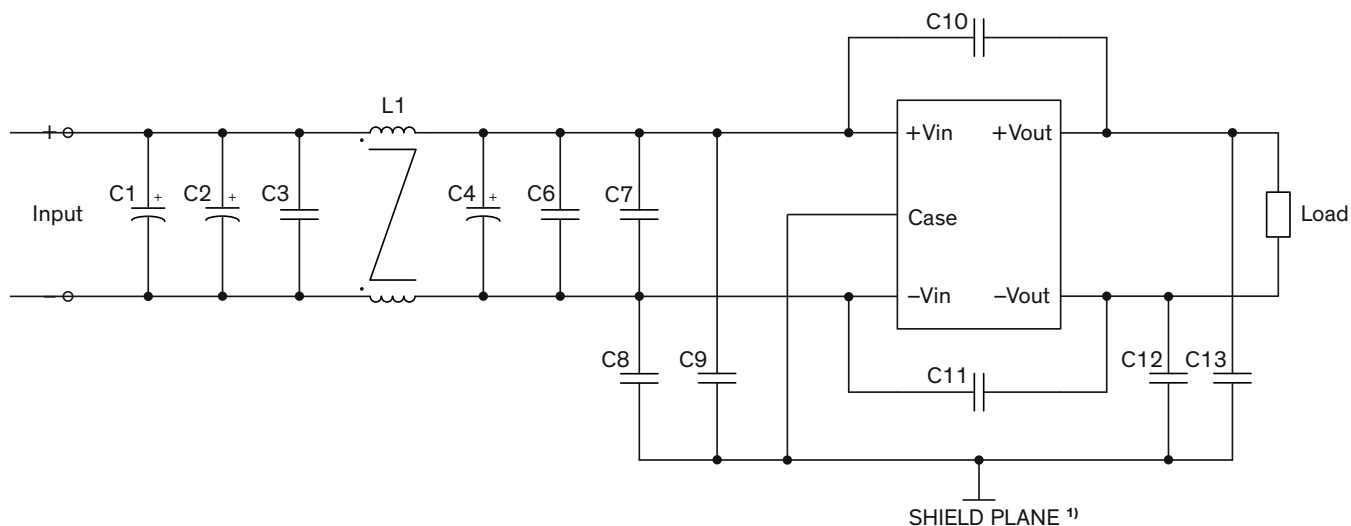


EMI Consideration

Suggested filter to comply with EN 55032 Conducted and Radiated Emissions Class A limits



¹⁾ SHIELD PLANE: floating / isolated

Suggested components to comply with EN 55032 Conducted and Radiated Emissions Class A limits

Model	C1, C2, C4	C3, C6, C7	C8, C9, C10, C11, C13	C12	L1
TEP 200-24xxWIR	470 μ F / 50 V Al. Cap. (lie down) KY	4.7 μ F / 50 V 1812 MLCC	1'000 pF / 3 kV 1808 MLCC	3'300 pF / 3 kV 1808 MLCC	45 μ H / 31.4 A TCK-092
TEP 200-48xxWIR	220 μ F / 100 V Al. Cap. (lie down) KY	2.2 μ F / 100 V 1812 MLCC		1'000 pF / 3 kV 1808 MLCC	224 μ H / 15.4 A TCK-087
TEP 200-72xxWIR	150 μ F / 200 V Al. Cap. (lie down) KY	1 μ F / 250 V 1812 MLCC			521 μ H / 7.7 A TCK-088

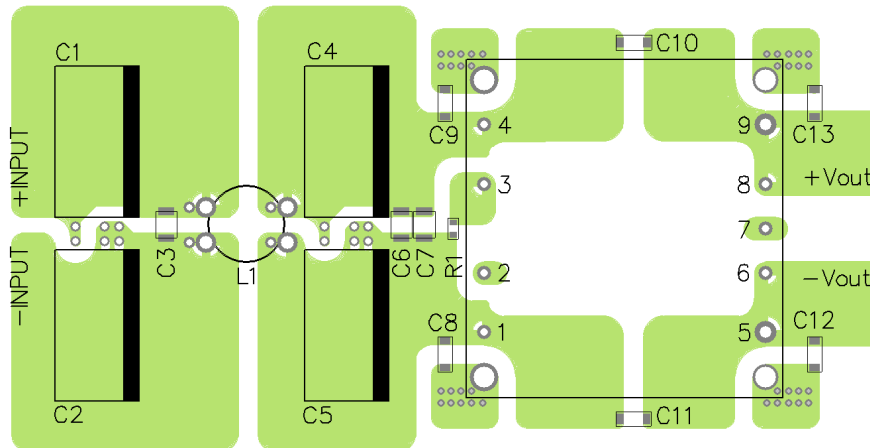
TCK-092 datasheet: www.tracopower.com/overview/tck-092

TCK-087 datasheet: www.tracopower.com/overview/tck-087

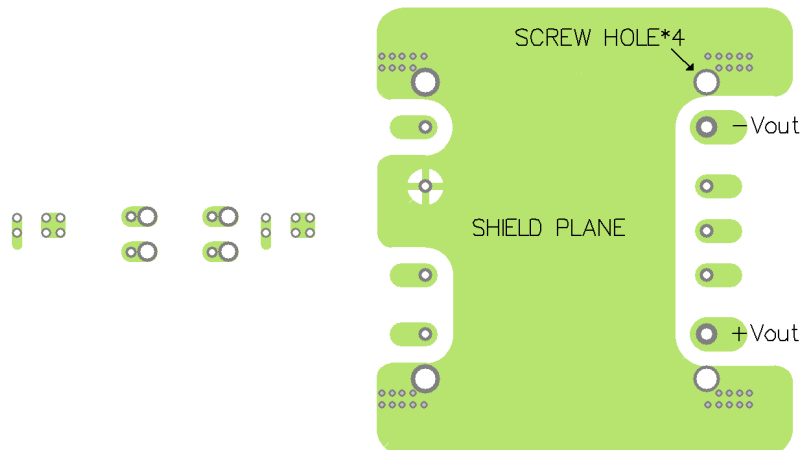
TCK-088 datasheet: www.tracopower.com/overview/tck-088

Suggested filter to comply with EN 55032 Conducted and Radiated Emissions Class A limits

PCB layout suggestion, Top view

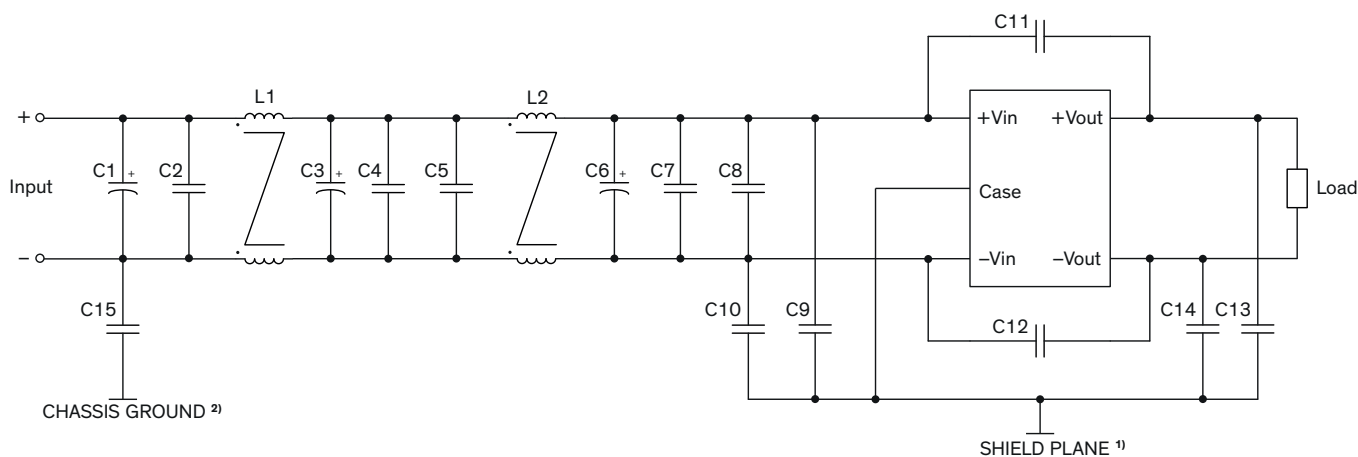


PCB layout suggestion, Bottom view



¹⁾ SHIELD PLANE: floating / isolated

Suggested filter to comply with EN 55032 Conducted and Radiated Emissions Class B limits



¹⁾ SHIELD PLANE: floating / isolated

²⁾ CHASSIS GROUND: Connect to chassis or earth, if not available leave floating

Suggested components to comply with EN 55032 Conducted and Radiated Emissions Class B limits

Model	C1, C3, C6	C2, C4, C5, C7, C8	C9, C10	C11	C12	C13, C14	C15	L1, L2
TEP 200-24xxWIR	470 µF 50 V Al. Cap. (lie down) KY	4.7 µF 50 V 1812 MLCC	10 nF 2 kC 1812 MLCC	1'000 pF 3 kV 1808 MLCC	4'700 pF 3 kV 1812 MLCC	10 nF 2 kV 1812 LCC	-	45 µH 31.4 A TCK-092
TEP 200-48xxWIR	220 µF 100 V Al. Cap. (lie down) KY	2.2 µF 100 V 1812 MLCC		2'200 pF 3 kV 1808 MLCC			1'000 pF 3 kV 1808 MLCC	224 µH 15.4 A TCK-087
TEP 200-72xxWIR	150 µF 200 V Al. Cap. (lie down) KY	1 µF 250 V Al. Cap. (lie down) KY	2'200 pF 3 kV 1808 MLCC		2'200 pF 3 kV 1808 MLCC	1'000 pF 3 kV 1808 MLCC		521 µH 7.7 A TCK-088

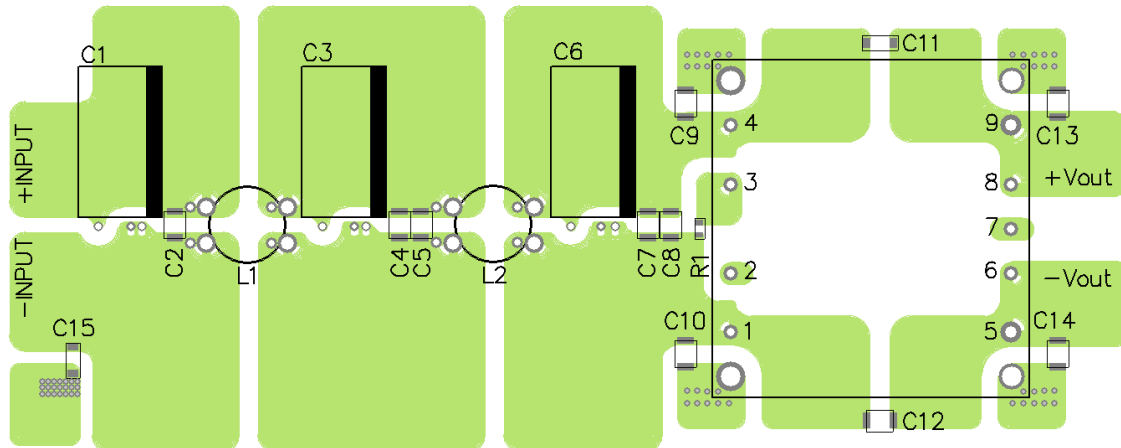
TCK-092 datasheet: www.tracopower.com/overview/tck-092

TCK-087 datasheet: www.tracopower.com/overview/tck-087

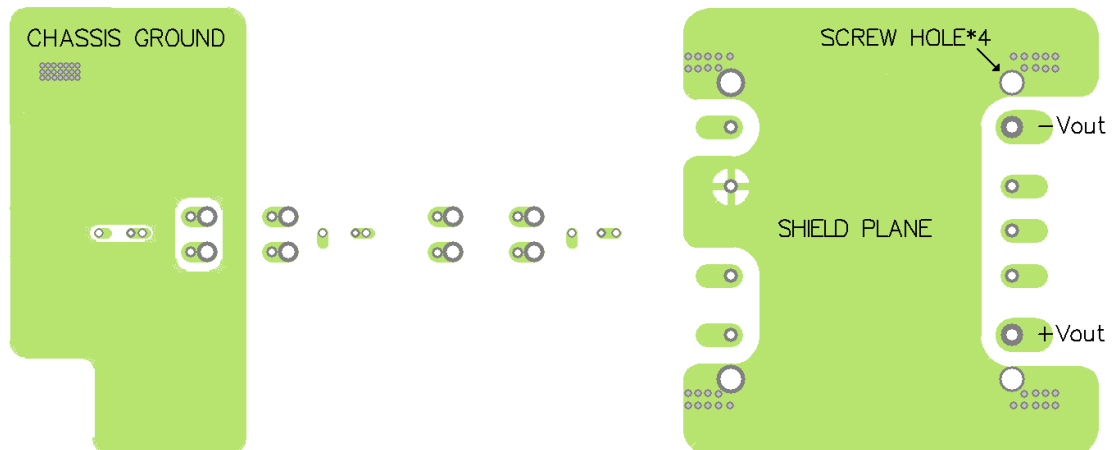
TCK-088 datasheet: www.tracopower.com/overview/tck-088

Suggested filter to comply with EN 55032 Conducted and Radiated Emissions Class B limits

PCB layout suggestion, Top view



PCB layout suggestion, Bottom view



¹⁾ SHIELD PLANE: floating / isolated

²⁾ CHASSIS GROUND: Connect to chassis or earth, if not available leave floating