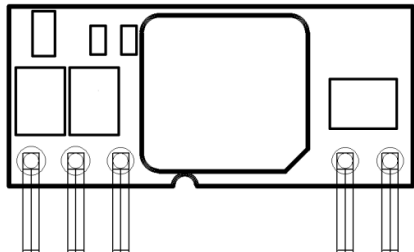


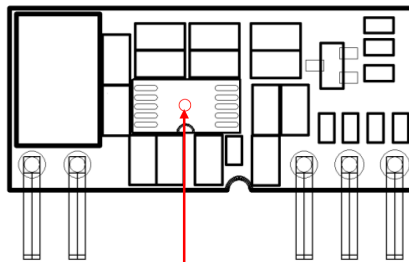
Thermal Consideration

The power module operates in a variety of thermal environments; however, sufficient cooling should be provided to help ensure reliable operation of the unit. Heat is removed by conduction, convention, and radiation to the surrounding Environment. Proper cooling can be verified by measuring the point as the figures below. The temperature at this location should not exceed 125°C. When operating, adequate cooling must be provided to maintain the test point temperature at or below 125°C. Although the maximum point Temperature of the power modules is 125°C., you can limit this Temperature to a lower value for extremely high reliability.

TOS 06-05SIL, Top View

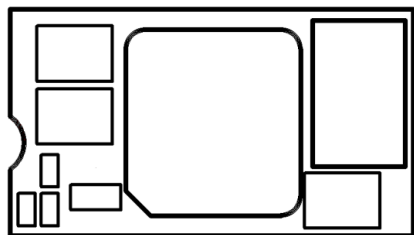


TOS 06-05SIL, Bottom View

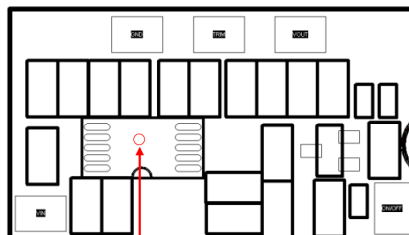


Temperature Measure Point

TOS 06-05SM, Top View

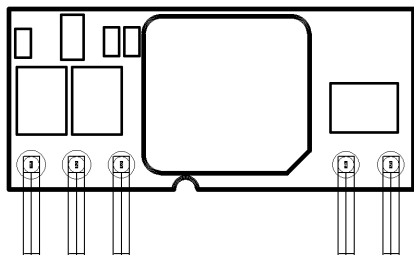


TOS 06-05SM, Bottom View

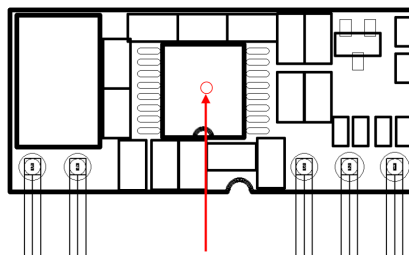


Temperature Measure Point

TOS 06-12SIL, Top View

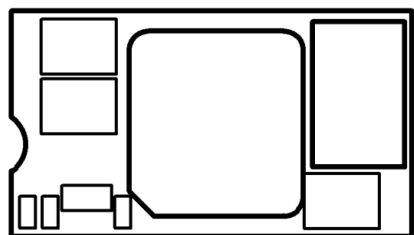


TOS 06-12SIL, Bottom View

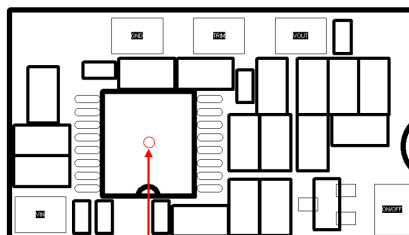


Temperature Measure Point

TOS 06-12SM, Top View



TOS 06-12SM, Bottom View



Temperature Measure Point