

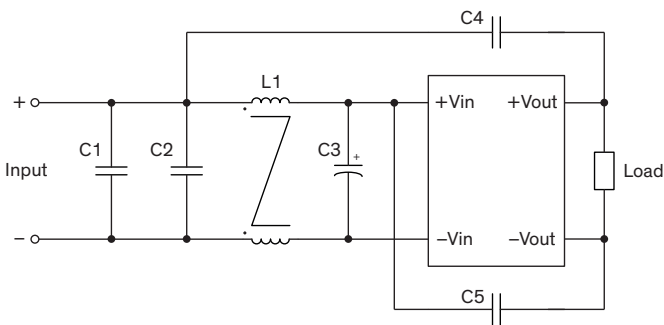
EMI Consideration

Suggested filter to comply with EN 55032 Conducted and Radiated Emissions Class A limits

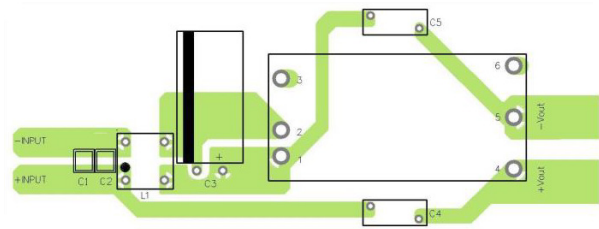
TEN 20WIRH series meet EN 55032 Conducted and Radiated Emissions Class A limits without external components.

Suggested filter to comply with EN 55032 Conducted and Radiated Emissions Class B limits

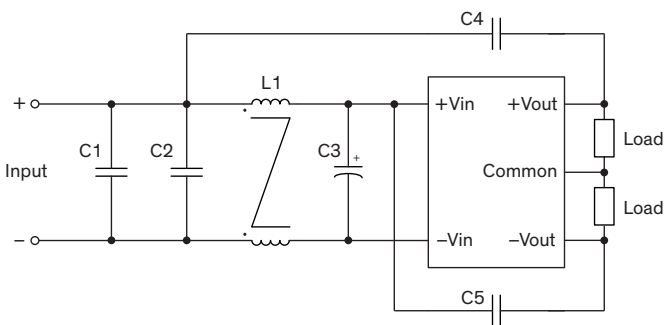
Single output models



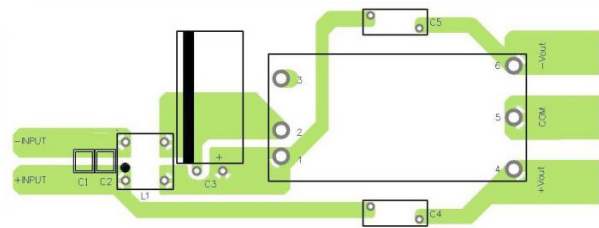
Layout suggestion Top View



Dual output models



Layout suggestion Top View



Suggested components to comply with EN 55032 Conducted and Radiated Emissions Class B limits					
Model	C1, C2	C3	C4	C5	L1
TEN 20-xxxxWIRH	1 μ F / 250 V 1812 MLCC	47 μ F / 200 V Al. Cap. KXJ	680 pF Y1 capacitor	330 pF Y1 capacitor	566 μ H TCK-181

TCK-181 datasheet: www.tracopower.com/overview/tck-181