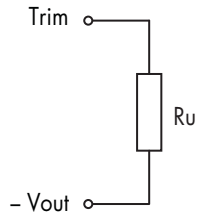


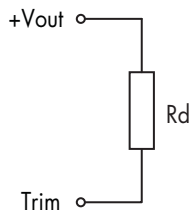
**Output Voltage Adjustment (for single output models only)**

Nominal output voltage at open Trim input

**Trim up**


$R_u$  [kOhm] min. 1/16 Watt

Trim up %	1	2	3	4	5	6	7	8	9	10
3.3 VDC	385	192	127	94.5	75.5	62.5	53.5	46.5	41	36.5
5.0 VDC	253	126	83	62	49	40.5	34.5	30	26.5	23.5
12 VDC	203	99	64.5	47	36.5	29.5	24.5	21	18	15.5
15 VDC	162	78	50.5	36.5	28	22.5	18.5	15.5	13.5	11.5
24 VDC	570	278	181	133	114	84	70.5	60	52	45.5
Trim up %	11	12	13	14	15	16	17	18	19	20
15 VDC	10	8.8	7.7	6.8	6.0	5.3	4.7	4.1	3.7	3.2
24 VDC	40	35.5	32	28.5	26	23.5	21.5	19.5	17.5	16

**Trim down**


$R_d$  [kOhm] min. 1/16 Watt

Trim down %	1	2	3	4	5	6	7	8	9	10
3.3 VDC	117	55	34	24	17.5	13.5	10.5	8.3	6.6	5.2
5.0 VDC	248	121	78	56.5	44	35.5	29.5	24.5	21.5	18.5
12 VDC	777	309	249	183	143	117	98	84	73	64
15 VDC	818	402	263	193	152	124	104	89	77.5	68
24 VDC	4950	2440	1600	1190	935	765	650	560	490	435