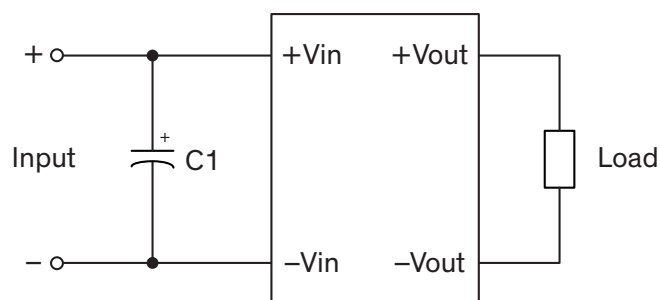


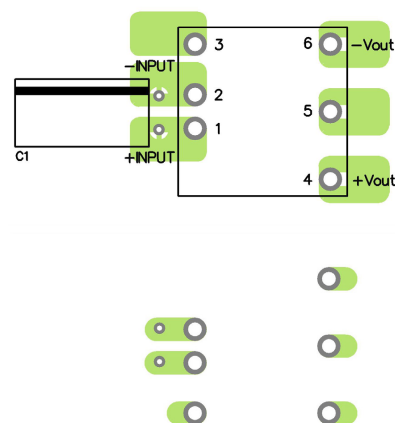
EMI Consideration

Suggested filter to comply with EN 55032 Conducted and Radiated Emissions Class A limits

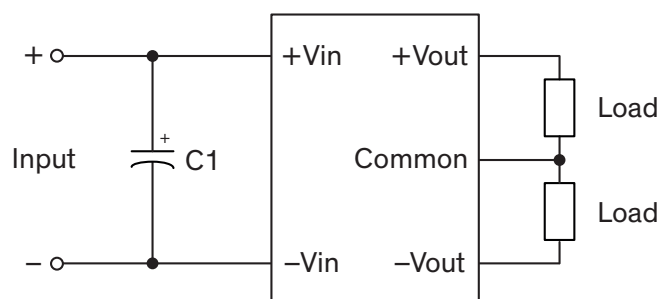
Single output models



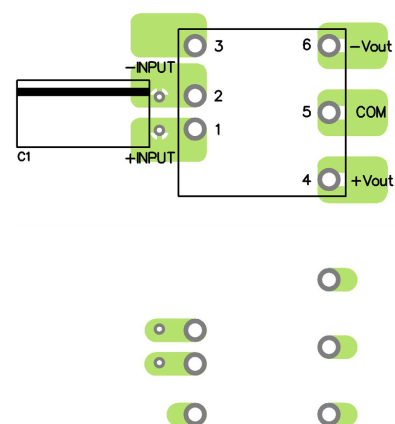
PCB layout suggestion (top/bottom)



Dual output models



PCB layout suggestion (top/bottom)

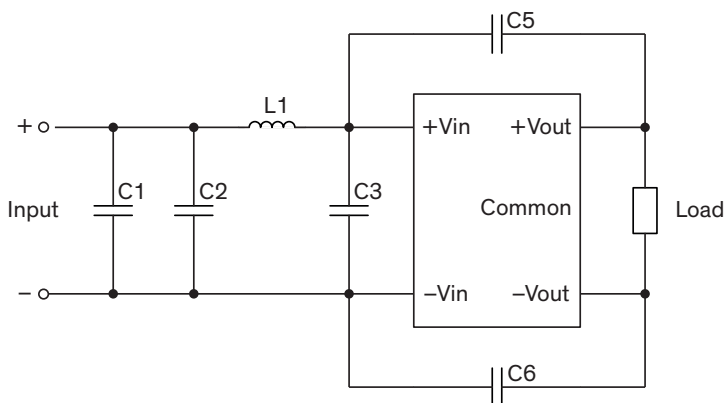


Suggested components to comply with EN 55032 Conducted and Radiated Emissions Class A limits

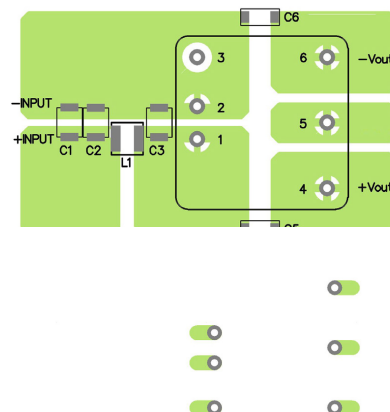
Model	C1
THN 20-24xxWIR	-
THN 20-48xxWIR	-
THN 20-72xxWIR	47 μ F / 200 V / KXJ

Suggested filter to comply with EN 55032 Conducted and Radiated Emissions Class B limits

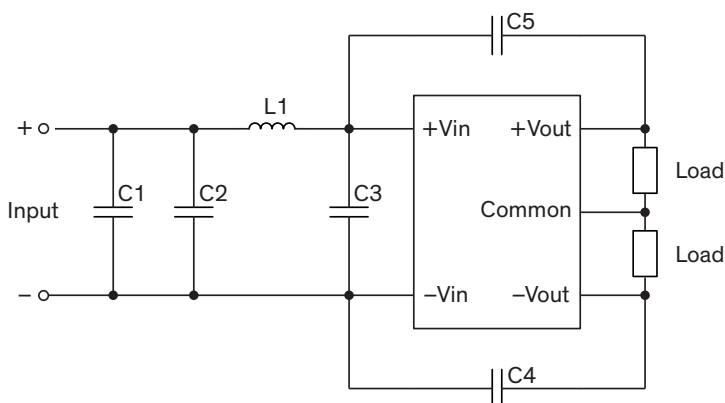
Single output models



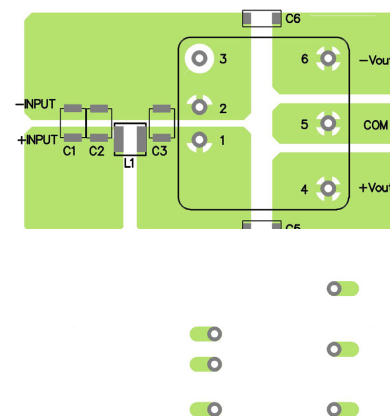
PCB layout suggestion (top/bottom)



Dual output models



PCB layout suggestion (top/bottom)



Suggested components to comply with EN 55032 Conducted and Radiated Emissions Class B limits

Model	C1	C2, C3	C5, C6	L1
THN 20-24xxWIR	-	4.7 μ F / 50 V 1812MLCC	1000 pF / 3 kV 1808 MLCC	6.8 μ H, TCK-178
THN 20-48xxWIR	-	2.2 μ F / 100 V 1812 MLCC	2200 pF / 3 kV 1808 MLCC	10 μ H, TCK-172
THN 20-72xxWIR	1 μ F / 250 V 1812 MLCC	1 μ F / 250 V 1812 MLCC	1000 pF / 3kV 1808 MLCC	47 μ H, TCK-170

TCK-178 datasheet: www.tracopower.com/overview/tck-178

TCK-172 datasheet: www.tracopower.com/overview/tck-172

TCK-170 datasheet: www.tracopower.com/overview/tck-170