

EMI Consideration

Suggested filter to comply with EN 55032 Conducted and Radiated Emissions Class A limits

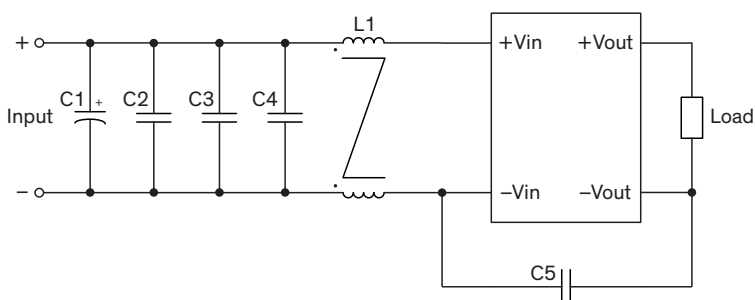
TEN 20WIR series meet EN 55032 conducted and radiated emissions Class A without external components.

Suggested filter to comply with EN 55032 Conducted and Radiated Emissions Class B limits

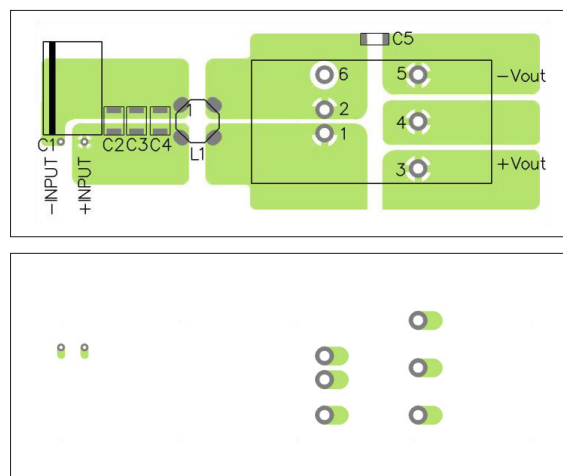
24 Vin and 48 Vin models meet EN 55032 conducted and radiated emissions Class B without external components.

Single output models

110 Vin models only

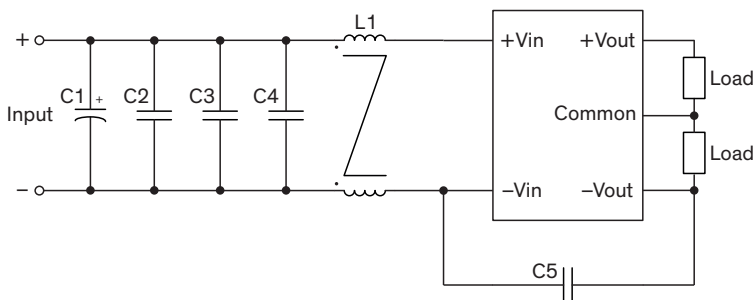


PCB layout suggestion

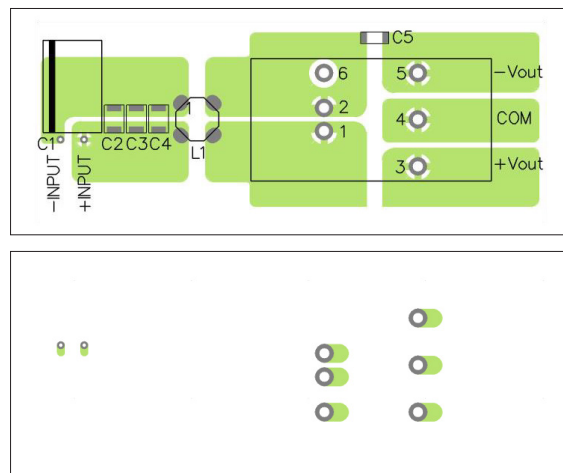


Dual output models

110 Vin models only



PCB layout suggestion



Suggested components to comply with EN 55032 Conducted and Radiated Emissions Class B limits

Model	C1	C2, C3, C4	C5	L1
TEN 20-24xxWIR TEN 20-48xxWIR	No external components needed to meet EN 55032 Conducted and Radiated Emissions Class B.			
TEN 20-72xxWIR	39 μ F / 250 V BXF	0.47 μ F / 250 V 1812 MLCC	1000 pF / 3 kV 1808 MLCC	470 μ H TCK-090

TCK-090 datasheet: www.tracopower.com/overview/tck-090