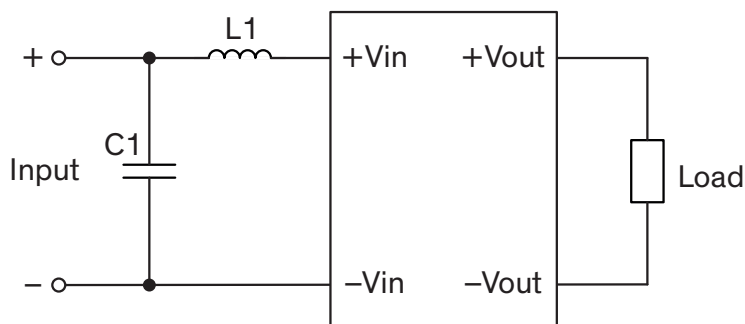


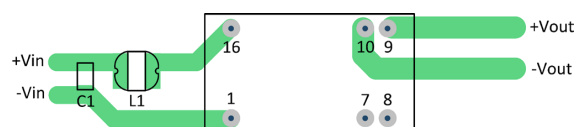
EMI Consideration

Suggested filter to comply with EN 55011 & EN 55022 Conducted and Radiated Emissions Class A limits

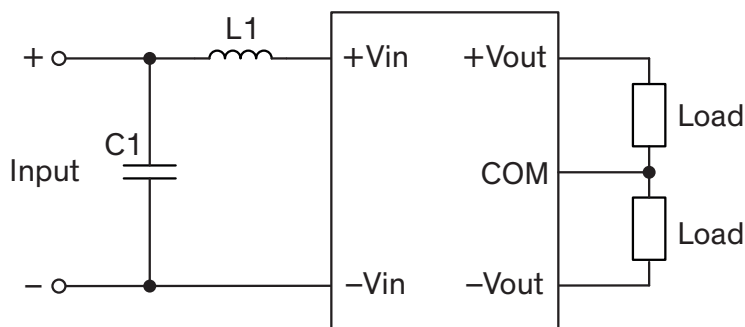
Single output models



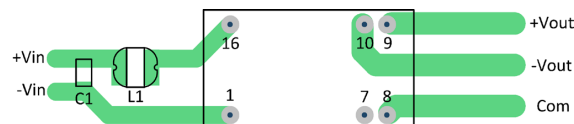
PCB layout suggestion



Dual output models



PCB layout suggestion



Suggested components to comply with EN 55011 & EN 55022 Conducted and Radiated Emissions Class A limits

Model	C1	L1
THI 3-xxxxM	2.2 μ F / 50 V 1206 X7R MLCC	88 μ H SCD0403T-880