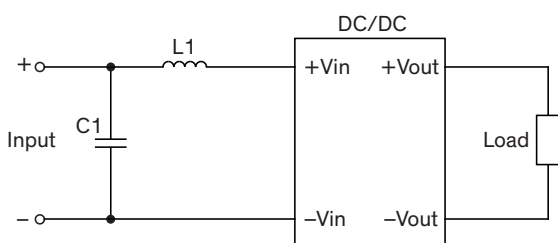


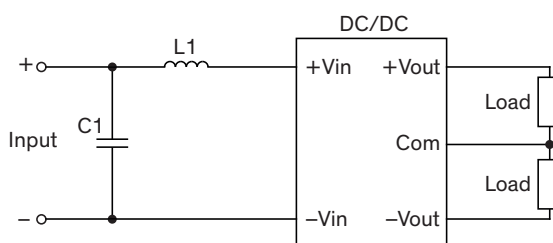
EMI Consideration

Suggested filter to comply with EN 55032 Class A & B limits

Single output models



Dual output models



Suggested components to comply with EN 55032 Class A limits

Model	C1	L1
TDL 2-05xx	10 μ F / 16 V 1206 X7R MLCC	3.3 μ H
TDL 2-12xx	4.7 μ F / 25 V 1206 X7R MLCC	18 μ H
TDL 2-24xx	4.7 μ F / 50 V 1206 X7R MLCC	39 μ H
TDL 2-48xx	2.2 μ F / 100 V 1206 X7R MLCC	68 μ H

Suggested components to comply with EN 55032 Class B limits

Model	C1	L1
TDL 2-05xx	10 μ F / 16 V 1206 X7R MLCC	6.8 μ H
TDL 2-12xx	10 μ F / 25 V 1206 X7R MLCC	27 μ H
TDL 2-24xx	10 μ F / 50 V 1206 X7R MLCC	39 μ H
TDL 2-48xx	3.3 μ F / 100 V 1206 X7S MLCC	68 μ H