

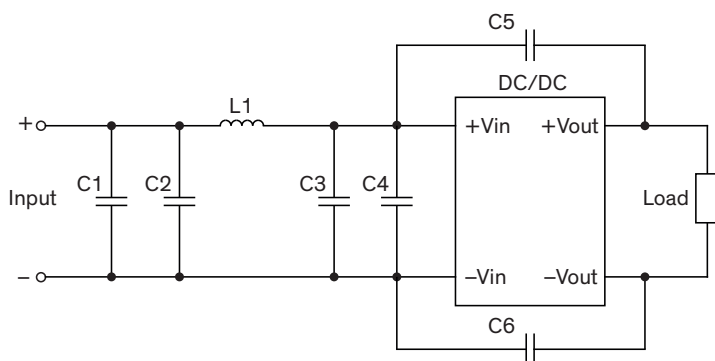
EMI Consideration

Suggested filter to comply with EN 55032 Conducted and Radiated Emissions Class A limits

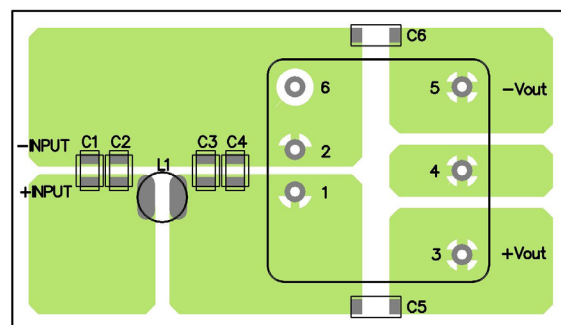
THN 15WIR series meet EN 55032 Conducted and Radiated Emissions Class A without external components.

Suggested filter to comply with EN 55032 Conducted and Radiated Emissions Class B limits

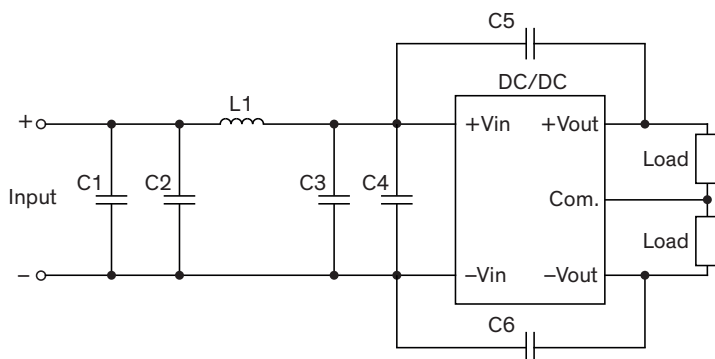
Single output models



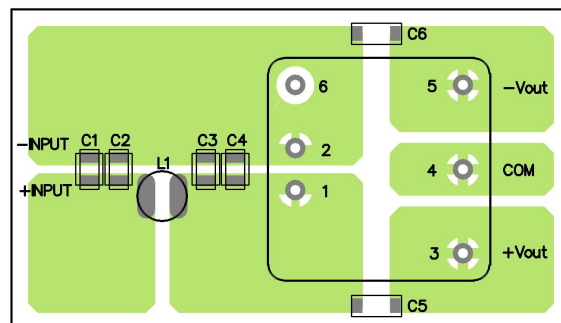
PCB layout suggestion



Dual output models



PCB layout suggestion



Suggested components to comply with EN 55032 Conducted and Radiated Emissions Class B limits

Model	C1	C2, C3	C4	C5, C6	L1
THN 15-24xxWIR	-	4.7 μ F / 50 V 1206 MLCC	-	680 pF / 3 kV 1808 MLCC	1.1 μ H TCK-078
THN 15-48xxWIR	2.2 μ F / 100 V 1206 MLCC	2.2 μ F / 100 V 1206 MLCC	-	1000 pF / 3 kV 1808 MLCC	10 μ H TCK-047
THN 15-72xxWIR	0.68 μ F / 250 V 1210 MLCC	0.68 μ F / 250 V 1210 MLCC	0.68 μ F / 250 V 1210 MLCC	1000 pF / 3 kV 1808 MLCC	22 μ H TCK-156

TCK-078 datasheet: www.tracopower.com/overview/tck-078

TCK-047 datasheet: www.tracopower.com/overview/tck-047

TCK-156 datasheet: www.tracopower.com/overview/tck-156