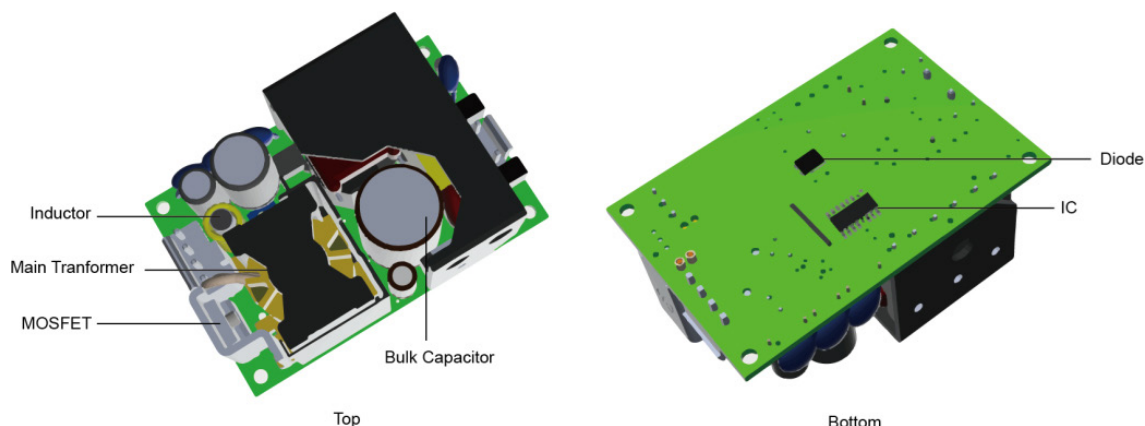


Thermal Consideration

Max. temperature of key components

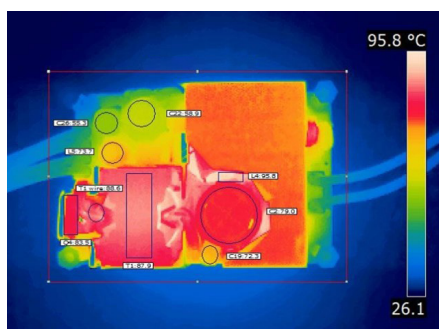


Component	Bulk Cap.	MOSFET	Inductor	DIODE	PWM IC	Main Transformer
Temp. limit [°C]	105	120	125	120	120	125

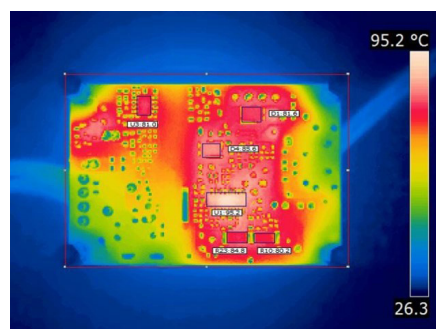
Note: - TPI 100-124A-J is chosen as a representative model in this document.

Thermal cam images

115 Vin; Full Load; Natural Convection; Top View

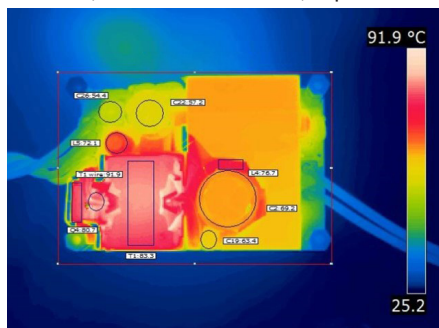


115 Vin; Full Load; Natural Convection; Bottom View

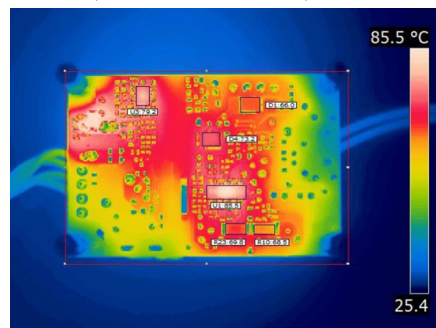


Component	T1 wire	T1 core	Q4	L5	C26	C22	C19	C2	L4	U1	U3	D1	D4	R10	R23
Temp. [°C]	88.6	87.9	83.5	73.7	55.3	58.9	72.3	79	95.8	95.2	81	81.6	85.6	80.2	84.8

230 Vin; Full Load; Natural Convection; Top View



230 Vin; Full Load; Natural Convection; Bottom View



Component	T1 wire	T1 core	Q4	L5	C26	C22	C19	C2	L4	U1	U3	D1	D4	R10	R23
Temp. [°C]	91.9	83.3	80.7	72.1	54.4	57.2	63.4	69.2	76.7	85.5	79.2	66	73.2	68.5	69.8