

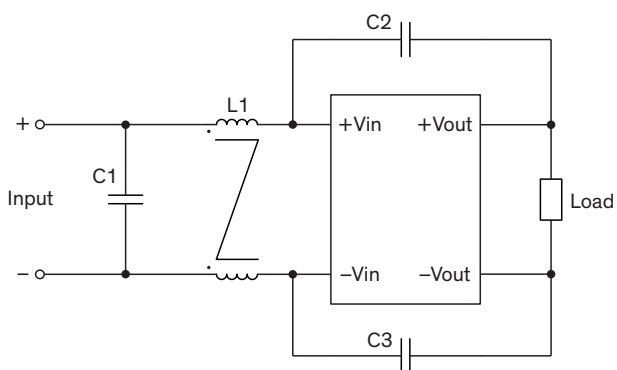
EMI Consideration

Suggested filter to comply with EN 55032 Conducted Emissions Class A limits

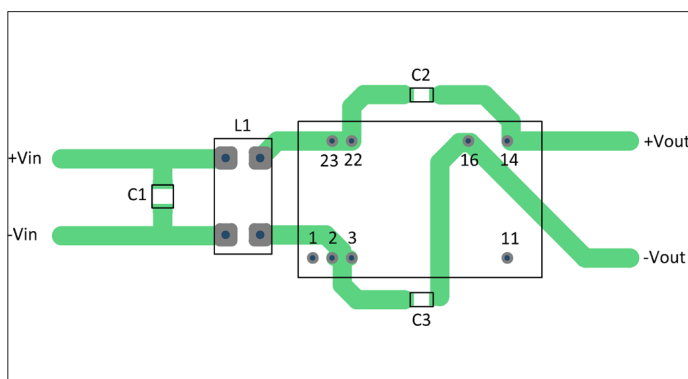
THD 10N series meet EN 55032 Conducted Emissions Class A without external components.

Suggested filter to comply with EN 55032 Radiated Emissions Class A limits

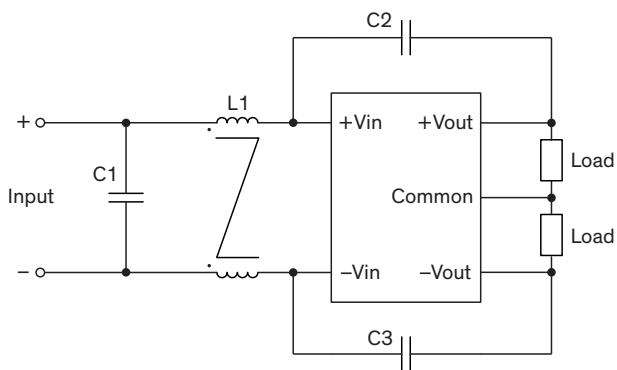
Single output models



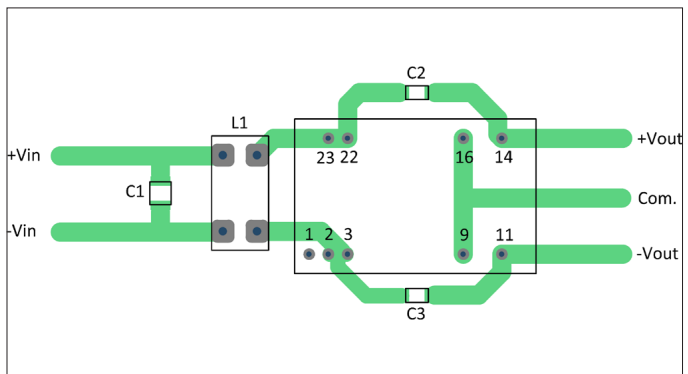
PCB layout suggestion



Dual output models

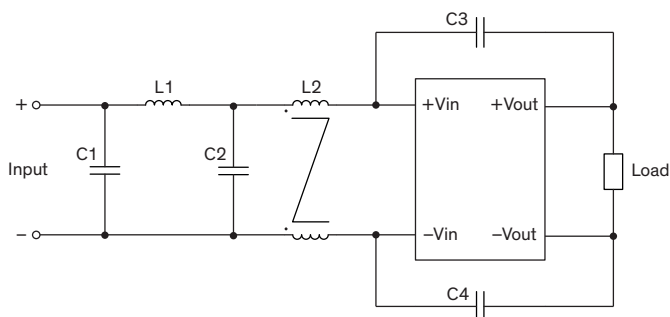
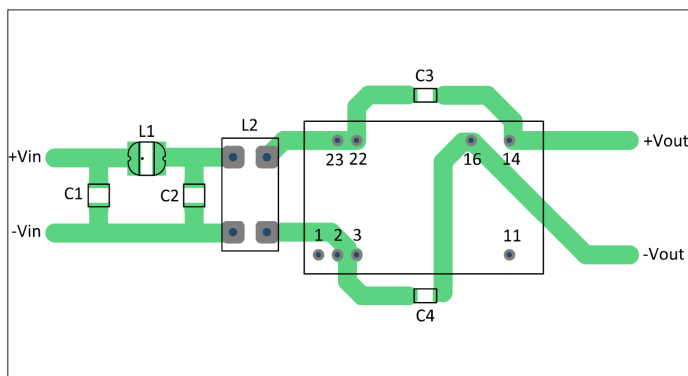
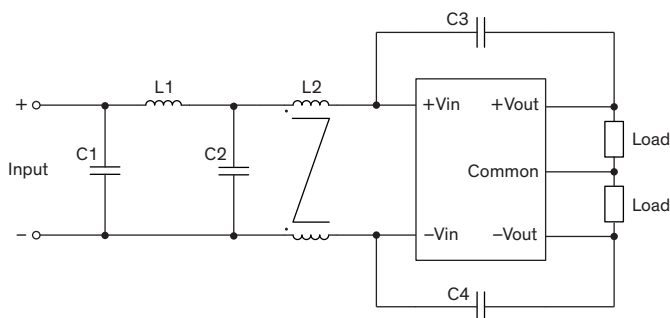
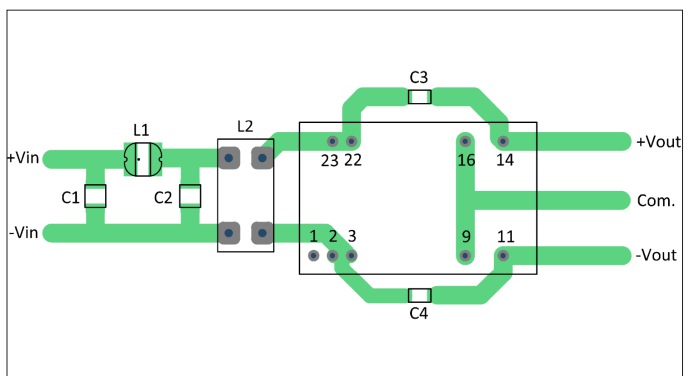


PCB layout suggestion



Suggested components to comply with EN 55032 Radiated Emissions Class A limits

Model	C1	L1	C2, C3
THD 10-xxxxN	4.7 μ F / 100 V / 1210 X7R	0.4 mH / 4.5 A 7448014501	1500 pF / 2 kV / 1206 X7R

Suggested filter to comply with EN 55032 Conducted and Radiated Emissions Class B limits
Single output models

PCB layout suggestion

Dual output models

PCB layout suggestion

Suggested components to comply with EN 55032 Conducted and Radiated Emissions Class B limits

Model	C1, C2	L1	L2	C3, C4
THD 10-xxxxN	4.7 μ F / 100 V 1210 X7R	4.7 μ H / 1.82 A 7447733047	0.4 mH / 4.5 A 7448014501	1500 pF / 2 kV 1206 X7R