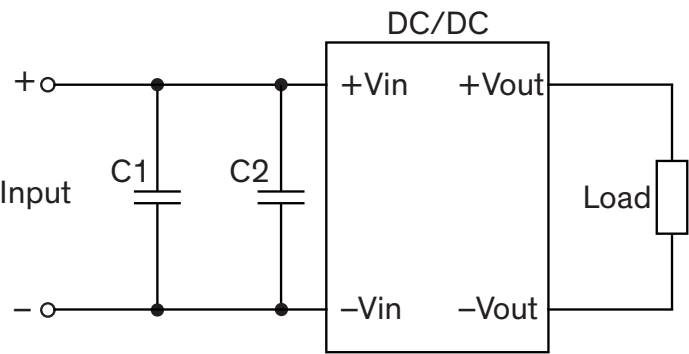


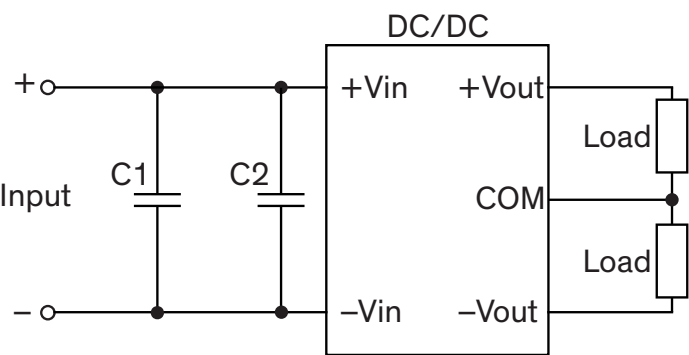
EMI Consideration

Suggested filter to comply with EN 55032 Conducted & Radiated Emissions Class A limits

Single output models



Dual output models



Suggested components to comply with EN 55022 Conducted & Radiated Emissions Class A limits		
Model	C1	C2
TMV 05xxx	4.7 μ F / 16 V 1206 MLCC	-
TMV 12xxx	10 μ F / 16 V 1206 MLCC	-
TMV 24xxx	4.7 μ F / 50 V 1206 MLCC	4.7 μ F / 50 V 1206 MLCC