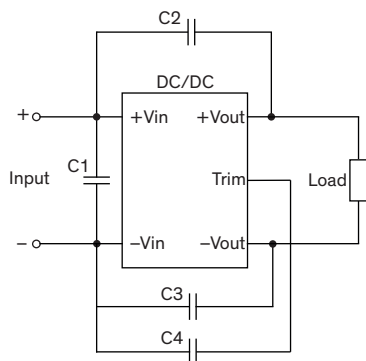


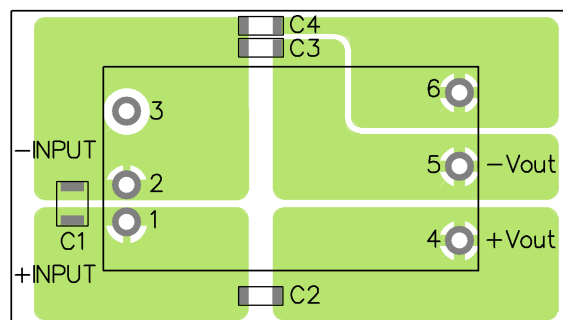
EMI Consideration

Suggested filter to comply with EN 55032 Conducted and Radiated Emissions Class A limits

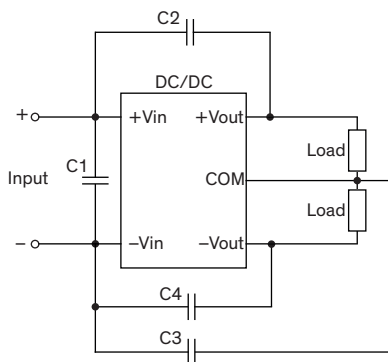
Single output models



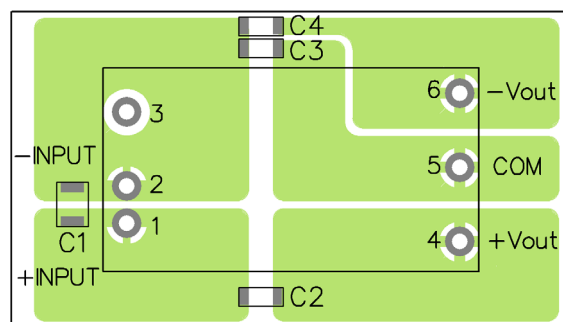
PCB layout suggestion



Dual output models



PCB layout suggestion

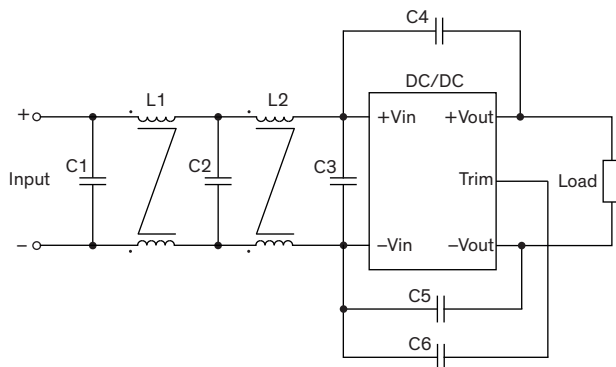


Suggested components to comply with EN 55032 Conducted and Radiated Emissions Class A limits

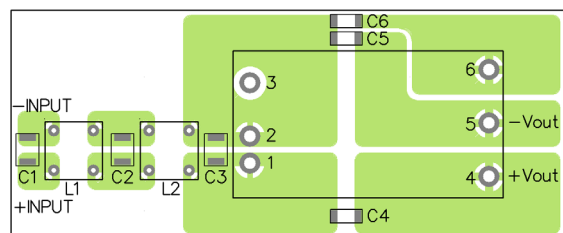
Model	C1	C2	C3	C4
TEN 30-12xx	10 μ F / 25 V 1812 MLCC	1000 pF / 2 kV 1808 MLCC	1000 pF / 2 kV 1808 MLCC	1000 pF / 2 kV 1808 MLCC
TEN 30-24xx	4.7 μ F / 50 V 1812 MLCC	1000 pF / 2 kV 1808 MLCC	1000 pF / 2 kV 1808 MLCC	1000 pF / 2 kV 1808 MLCC
TEN 30-48xx	2.2 μ F / 100 V 1812 MLCC	1000 pF / 2 kV 1808 MLCC	1000 pF / 2 kV 1808 MLCC	1000 pF / 2 kV 1808 MLCC

Suggested filter to comply with EN 55032 Conducted and Radiated Emissions Class B limits

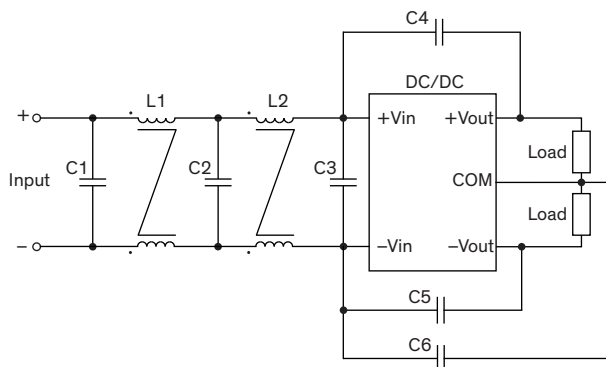
Single output models



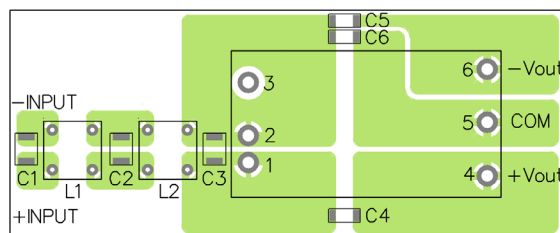
PCB layout suggestion



Dual output models



PCB layout suggestion



Suggested components to comply with EN 55032 Conducted and Radiated Emissions Class B limits

Model	C1, C2, C3	C4, C5, C6	L1	L2
TEN 30-12xx	10 μ F / 25 V 1812 MLCC	1000 pF / 2 kV 1808 MLCC	33.3 μ H / TCK-075 Common-Choke	55 μ H / TCK-076 Common-Choke
TEN 30-24xx	4.7 μ F / 50 V 1812 MLCC	1000 pF / 2 kV 1808 MLCC	33.3 μ H / TCK-075 Common-Choke	55 μ H / TCK-076 Common-Choke
TEN 30-48xx	2.2 μ F / 100 V 1812 MLCC	1000 pF / 2 kV 1808 MLCC	33.3 μ H / TCK-075 Common-Choke	55 μ H / TCK-076 Common-Choke

TCK-075 datasheet: www.tracopower.com/overview/tck-075

TCK-076 datasheet: www.tracopower.com/overview/tck-076